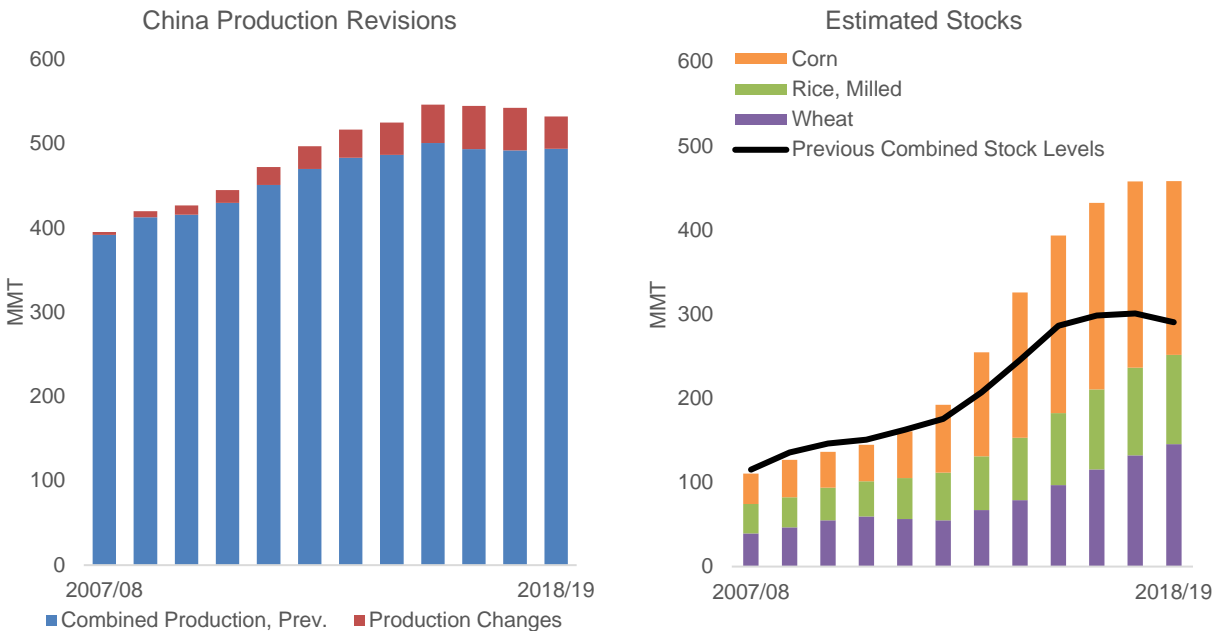


# Grain: World Markets and Trade

## China's Stocks Swell on Production Revisions



Last month, China's National Bureau of Statistics (NBS) released revised area, yield, and production estimates for corn, wheat, and rice from 2007/08 through 2017/18. This month's Supply and Demand balance sheets for China incorporate the NBS revisions. Details can be found on the USDA World Agricultural Supply and Demand Estimates [Historical Revisions page](#).

**Corn:** The NBS revision adds a cumulative 266 million tons to production for the 2007/08-2017/18 period. While just over a half of the additional volume is added to stocks, total domestic consumption is adjusted to reflect greater use for feed and residual disappearance and fuel ethanol. The level of stocks rises sharply starting in 2013/14 reflecting government support programs at the time. Despite large stocks, any potential boost to exports should be minimal as China's corn is currently more expensive compared to world levels. Imports remain unchanged.

**Wheat:** The NBS revision adds a cumulative 20 million tons to production for the 2007/08-2017/18 period. Most of the increase is added to stocks, with only a small addition to feed and residual use. Revisions were not made to food, seed, and industrial use as per-capita consumption appears to be relatively stable. China's stocks are forecast to account for over half of global wheat stocks but are generally not accessible to world markets.

**Rice:** The NBS revision adds a cumulative 18 million tons to production for the 2007/08-2017/18 period. Most of the increase is added to stocks as rice is primarily used for food and per-capita consumption appears to have remained relatively stable. China's stocks are forecast to account for more than two-thirds of global stocks, which are now at a record. Despite lower rice and wheat production in 2018/19, stocks are still forecast to climb, though at a slower expected rate. Auctions of both rice and wheat stocks have resulted in limited sales from state reserves in contrast to the rapid pace of sales from corn stocks.

# Table of Contents

## World Markets and Trade: Commodities and Data

WHEAT.....	3
RICE.....	7
COARSE GRAINS.....	9
ENDNOTES.....	13
DATA TABLES.....	16

The Foreign Agricultural Service (FAS) updates its production, supply and distribution (PSD) database for cotton, oilseeds, and grains at 12:00 p.m. on the day the *World Agricultural Supply and Demand Estimates* (WASDE) report is released. This circular is released by 12:15 p.m.

**To download the tables in the publication**, go to Production, Supply and Distribution Database ([PSD Online](#)): scroll down to Reports, and Click the plus sign [+] next to Grains.

### **FAS Reports and Databases:**

[Current World Markets and Trade and World Agricultural Production Reports](#)

[Archives World Markets and Trade and World Agricultural Production Reports](#)

[Production, Supply and Distribution Database \(PSD Online\)](#)

[Global Agricultural Trade System \(U.S. Exports and Imports\)](#)

[Export Sales Report](#)

[Global Agricultural Information Network \(Agricultural Attaché Reports\)](#)

### **Other USDA Reports:**

[World Agricultural Supply and Demand Estimates \(WASDE\)](#)

[Economic Research Service](#)

[National Agricultural Statistics Service](#)

# WHEAT

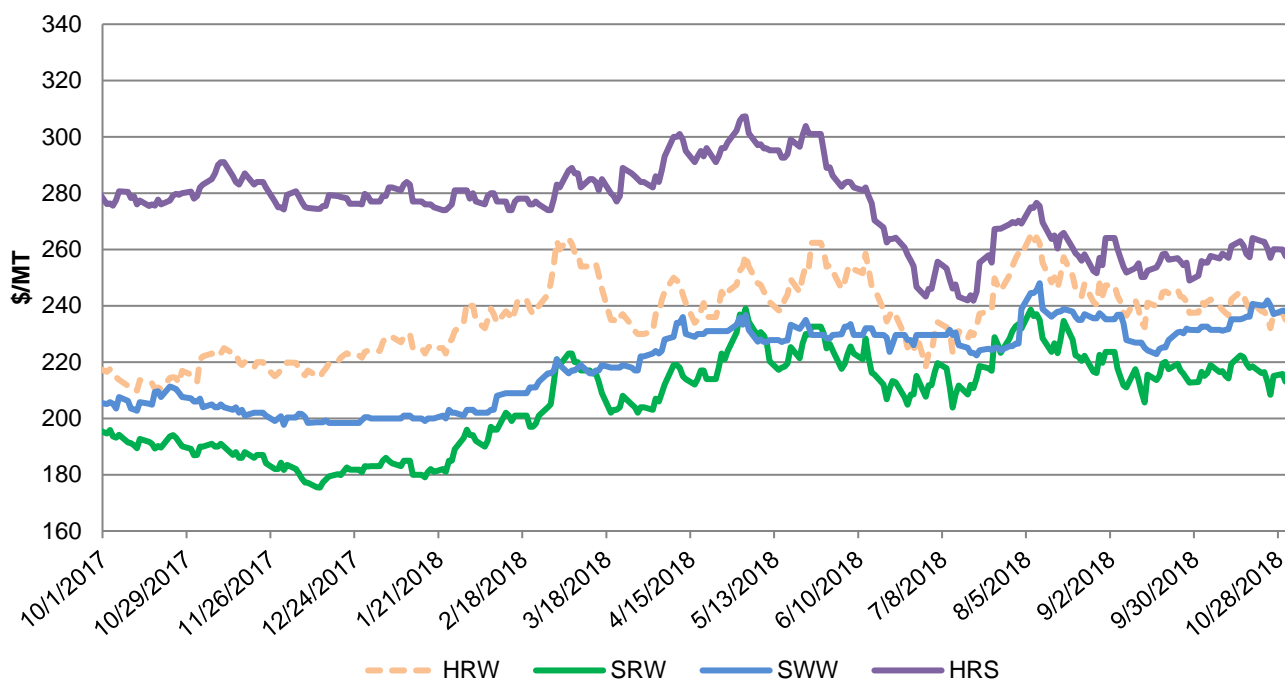
## OVERVIEW FOR 2018/19

Global wheat production is up this month mainly due to a larger crop in China, while crops were reduced for Australia, Morocco, Pakistan, and Ukraine. Trade is down slightly this month mainly on lower import demand for Bangladesh, China, Indonesia, Thailand, and Vietnam. Exports are lowered for Australia as drought continues. The U.S. season-average farm price is unchanged at \$5.10 per bushel.

## WHEAT PRICES

Domestic: In general, wheat prices have been relatively flat over the last few months, pressured by a weak pace of export sales. For October, prices were mostly up from the previous month based on tightening competitor supplies. Soft White Winter (SWW) gained \$6/ton to \$237, supported by the continuing drought in Australia. Hard Red Spring (HRS) jumped \$8/ton to \$257 on an uptick in sales. Soft Red Winter (SRW) rose \$1/ton to \$213. On the other hand, Hard Red Winter (HRW) was down \$3/ton to \$235 with continued weakness in international demand.

U.S. Daily FOB Export Bids



Source: IGC

**Global:**

Exporter quotes were mixed in October. Argentine, EU, and U.S. prices were down, while Australian, Black Sea, and Canadian quotes were up. Australia's drought continues to result in increasingly uncompetitive prices. Black Sea, EU, Argentine, and U.S. quotes are currently within a very narrow range, while Canadian prices are up slightly.

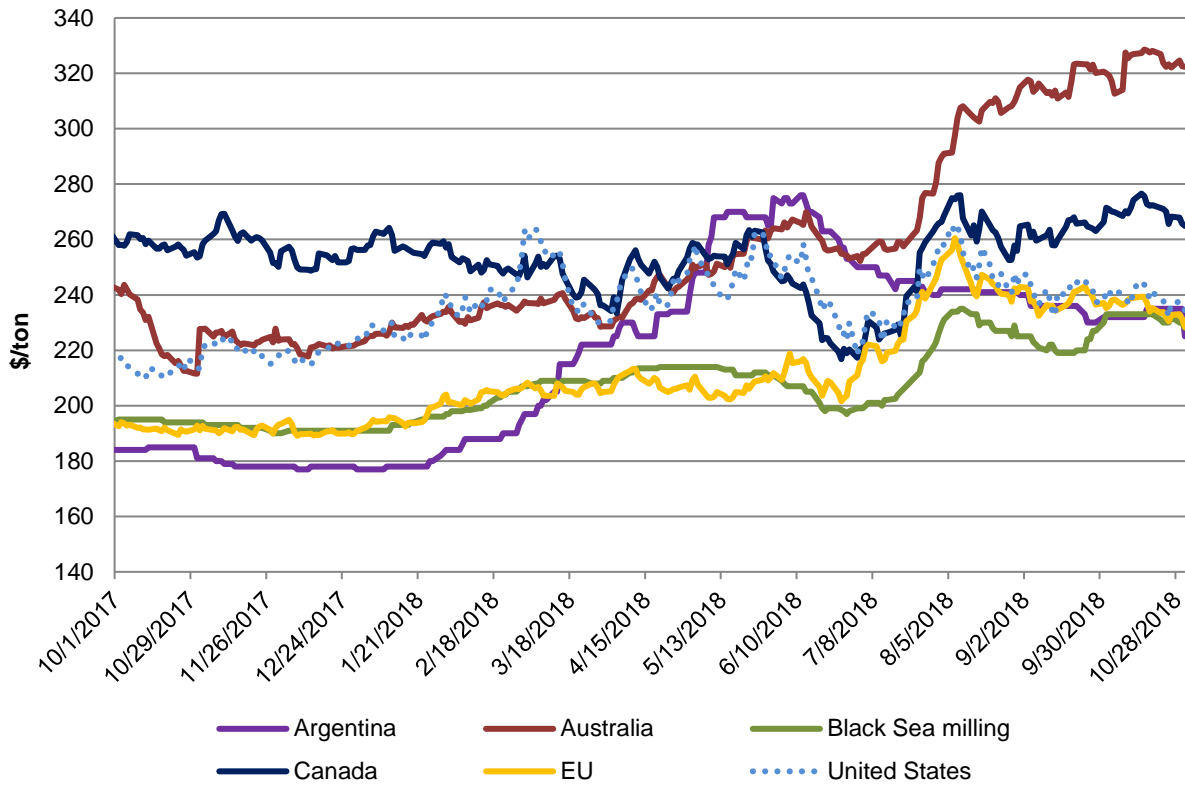
Month Ending	Argentina	Australia	Black Sea	Canada	EU	US
October	\$225	\$322	\$228	\$265	\$228	\$235
September	\$230	\$320	\$227	\$263	\$237	\$237
August	\$240	\$315	\$225	\$265	\$243	\$247

Month Ending Prices for Major Wheat Exporters

Source: IGC

Note on FOB prices: Argentina- 12.0%, up river; Australia- average of APW; Fremantle, Newcastle, and Port Adelaide; Black Sea- milling; Canada- CWRS 13.5% St. Lawrence; EU- France grade 1, Rouen; US- HRW 11.5% Gulf

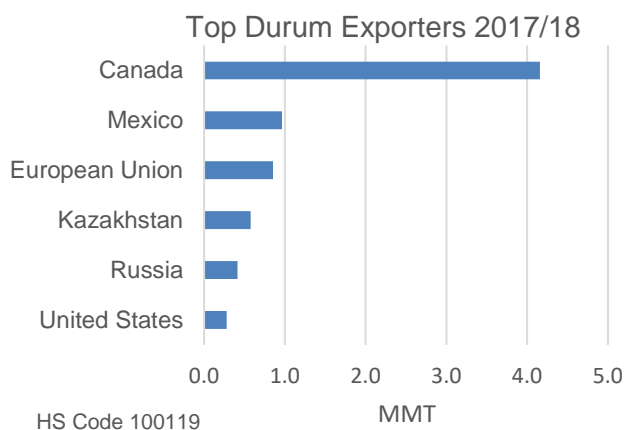
**International Daily FOB Export Bids**



## MARKET FEATURES

### North America Dominates Global Durum Exports

Durum wheat is commonly used for food products such as pasta and couscous. Canada is by far the world's leading exporter of durum. In 2017/18, Canada exported more than 4.0 million tons of durum, with the majority of those shipments destined for Algeria, the United States, and Morocco. Exports to Italy, formerly Canada's largest market, have fallen substantially in light of Italy's 2017 country of origin labelling rule.

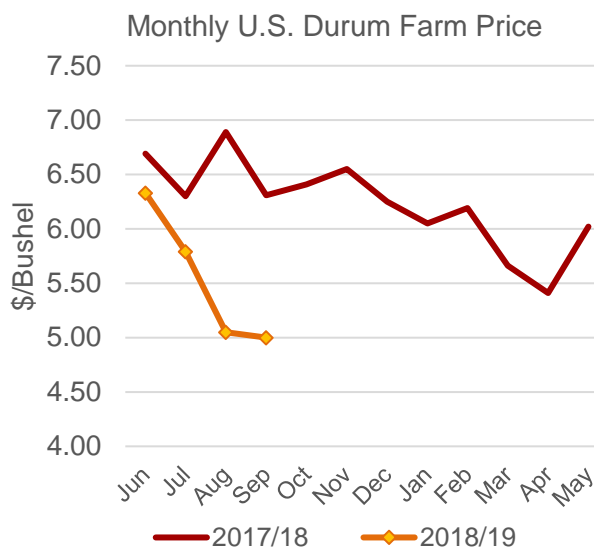


Mexico, a distant second in global durum exports, shipped mostly to Venezuela and Algeria in 2017/18 as shipments to Turkey and Italy dropped off substantially from previous years. This wheat lacks the higher quality factors of Canadian supplies and is generally less preferred for quality-focused pasta markets. Mexican durum is popular in Algeria for making couscous but is still only the second-leading supplier to that market, behind Canada.

The European Union is the top producer of durum wheat but remains a net importer due to strong internal demand. France and Spain export durum, mainly to other EU countries and North Africa. Italy is the primary durum importer in the region based on strong historic demand for pasta as well as exports of pasta products. In recent years, Italy's slowing imports from North America have been partly offset by larger purchases from France, Kazakhstan, and Russia.

### U.S. Durum Prices Down with Rebound in Crop

Based on better growing conditions this season, U.S. durum production is up 41 percent from last year's drought affected crop. The monthly farm-level price for durum is down significantly from last year and exports are projected up more than 70 percent. Most U.S. exports go to Algeria and Italy, competing with Canada. However, U.S. production is still insufficient to meet domestic use, so the United States is expected to continue as a net importer of durum with nearly all of its imports coming from Canada.



## TRADE CHANGES IN 2018/19 (1,000 MT)

Country	Attribute	Previous	Current	Change	Reason
<b>Algeria</b>	Imports	7,200	<b>7,000</b>	<b>-200</b>	Larger production
<b>Australia</b>	Exports	13,000	<b>11,500</b>	<b>-1,500</b>	Reduced crop and uncompetitive prices
<b>Bangladesh</b>	Imports	6,500	<b>6,000</b>	<b>-500</b>	Lower food consumption
<b>China</b>	Imports	4,500	<b>4,000</b>	<b>-500</b>	Larger production and current trade environment
<b>Ethiopia</b>	Imports	1,900	<b>1,700</b>	<b>-200</b>	Slow pace of tendering
<b>European Union</b>	Imports	6,000	<b>6,500</b>	<b>500</b>	Strong import pace due to smaller crop
<b>Indonesia</b>	Imports	10,500	<b>10,000</b>	<b>-500</b>	Lower food consumption, as Australian prices continue to climb to uncompetitive levels
<b>Pakistan</b>	Exports	1,200	<b>1,000</b>	<b>-200</b>	Elimination of export subsidy
<b>Thailand</b>	Imports	3,300	<b>3,000</b>	<b>-300</b>	Lower consumption
<b>Turkey</b>	Imports	4,500	<b>4,700</b>	<b>200</b>	Pace; expecting stronger imports of wheat grain for flour exports
<b>Vietnam</b>	Imports	4,800	<b>4,500</b>	<b>-300</b>	Decreased feeding of wheat and greater use of substitutes

# RICE

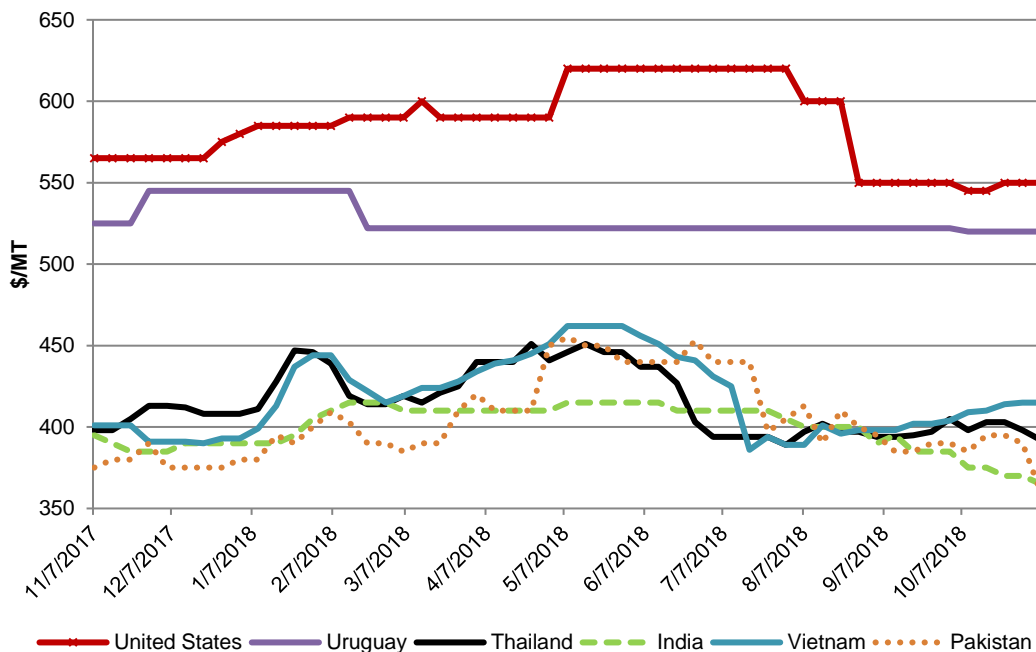
## OVERVIEW FOR 2018/19

Global rice production is raised this month due to multi-year revisions for China. Global consumption is forecast marginally higher and ending stocks are raised to a new record, also on the revisions for China. Trade is trimmed on lower purchases by Bangladesh and Afghanistan.

## RICE PRICES

Global: Export quotes from the Western Hemisphere remain elevated compared to those from Asian suppliers. U.S. quotes, while lower from earlier in the year, remain the highest although stable at \$550/ton as harvest pressure from new crop supplies is offset by recent sales to Iraq. Meanwhile, Uruguay quotes are steady at \$520/ton. Over the past month, Thai quotes slid lower to \$392/ton as it vies for business with the recent Philippines tenders. In contrast, Vietnamese quotes have risen to \$415/ton. Indian and Pakistani quotes have declined further to \$365/ton and \$360/ton, respectively, as the recent *kharif* crop is met with muted off-shore demand. This is the lowest Indian quote in more than a year and a half, and the lowest Pakistani quote in almost 2 years.

Weekly FOB Export Quotes

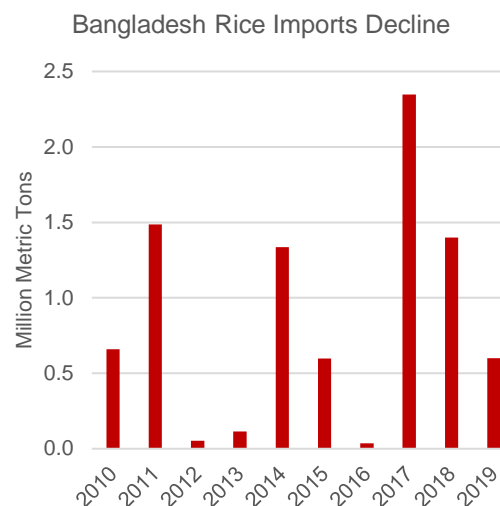
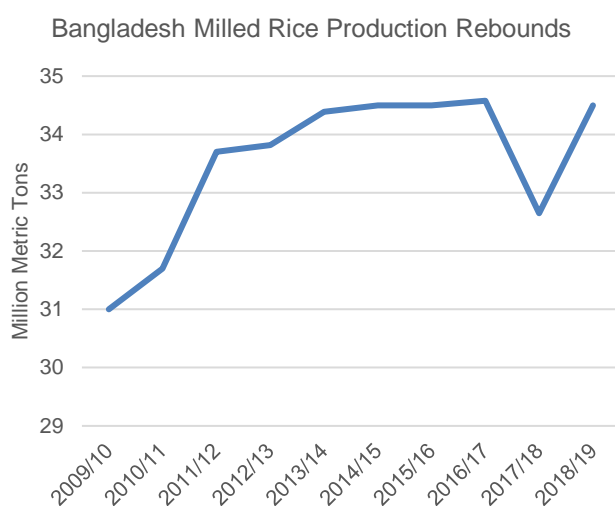


\*Note on FOB prices: Thailand - 100B, India - 5%, Vietnam - 5%, Pakistan 5%, United States - #2/5 (long grain), Uruguay - 5%

## MARKET FEATURE

### Bangladesh Imports Decline on Larger Crop

Rice production in Bangladesh has been revised higher this month on larger crops for the recently completed *aus* and current *aman* seasons. Total 2018/19 production is now forecast up nearly 2 million tons compared to the prior year. As noted in the [June 2018](#) Grain World Markets and Trade Report, the government reinstated a higher import duty at that time in light of higher domestic production. The import pace has proven to be lackluster since then, resulting in a sharply lower estimate this month of 600,000 tons for 2019 imports.



### TRADE CHANGES IN 2019 (1,000 MT)

Country	Attribute	Previous	Current	Change	Reason
Bangladesh	Imports	1,100	600	-500	Larger crop and impact of import tariffs
India	Exports	13,000	12,500	-500	Reduced trade with Bangladesh

### TRADE CHANGES IN 2018 (1,000 MT)

Country	Attribute	Previous	Current	Change	Reason
Indonesia	Imports	2,000	2,100	100	Updated trade data
India	Exports	13,000	12,500	-500	Slowing shipments to Bangladesh
Thailand	Exports	10,500	10,700	200	Pace of trade to date



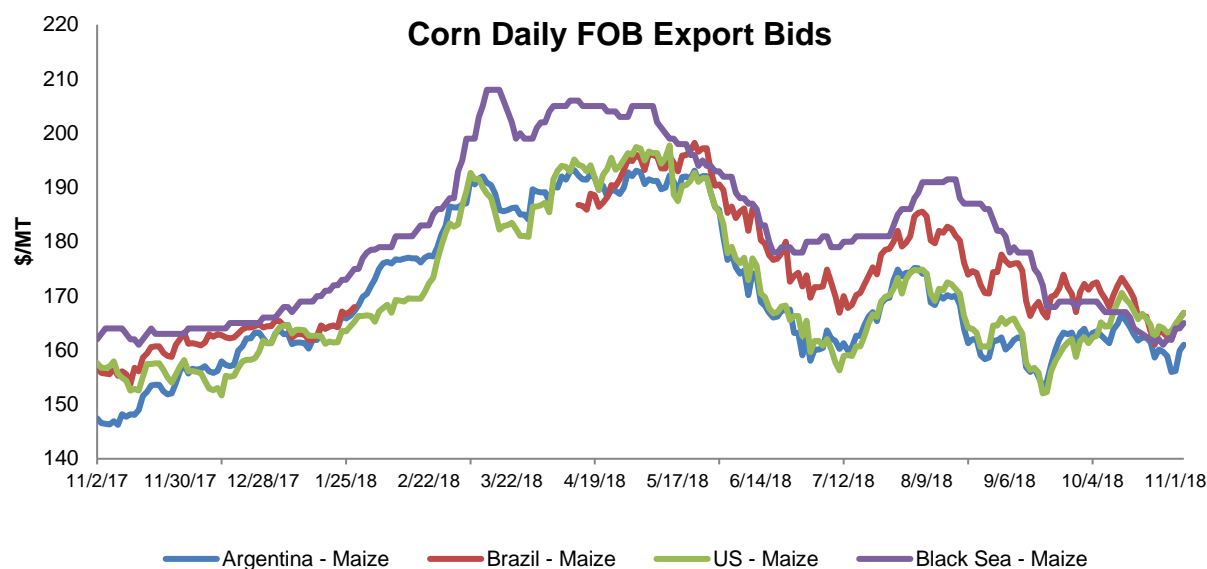
# COARSE GRAINS

## OVERVIEW FOR 2018/19

Global corn production is up sharply this month mainly due to historical revisions for China. Aside from China, gains for Ukraine and Argentina more than offset reductions for the European Union and the United States. Global trade is up with greater imports for the EU, Iran, and Vietnam. Exports for Ukraine are expected at a record. The U.S. season-average farm price is raised 10 cents to \$3.60 per bushel, reflecting stronger global demand, observed prices to date, and smaller stocks.

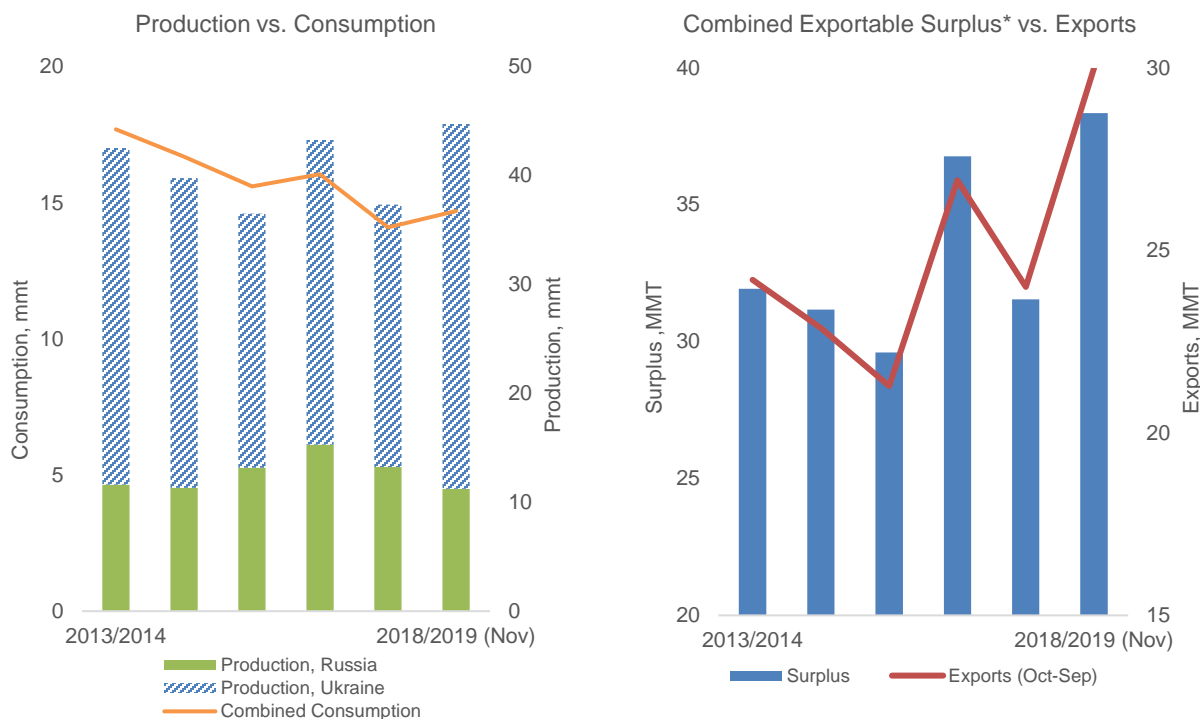
## CORN PRICES

Global: Corn prices, overall, have changed little since the previous WASDE. Argentina bids were up \$3/ton to \$162, while Brazil bids were lower \$3/ton at \$168. Black Sea bids fell \$10/ton to \$165, despite strong European Union demand, reflecting ample new-crop supplies in the region. U.S. bids bounced back to \$165, the same as a month ago, reflecting strong global demand. Prices of all major suppliers have virtually converged, indicating strong competition.



## MARKET FEATURE

### Black Sea Corn Supplies Add to Global Competition



\*Surplus is defined as the difference between Production and Domestic Consumption. (Surplus = Production – Domestic Consumption)

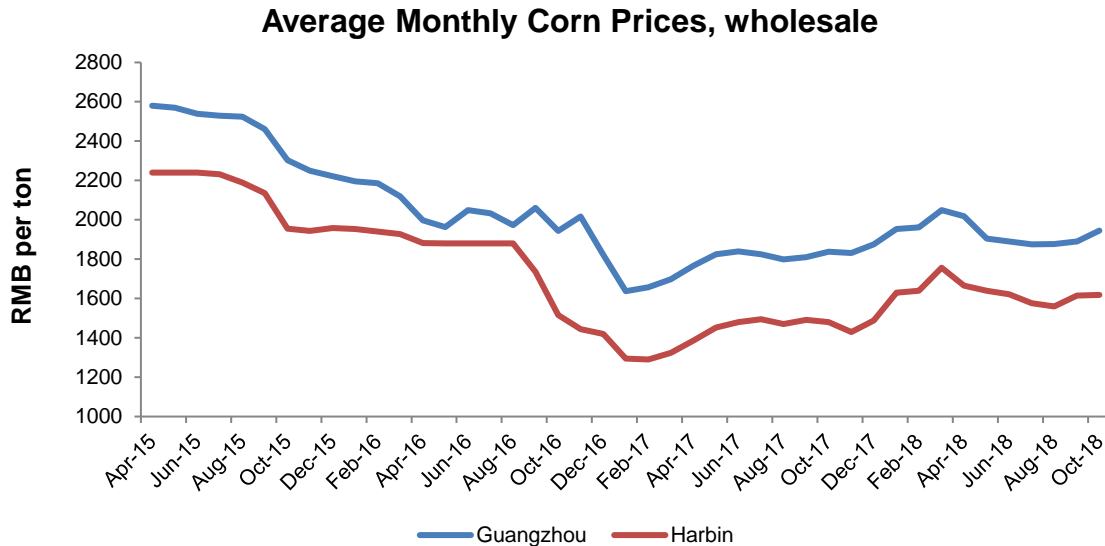
Corn production in the Black Sea region (Ukraine and Russia) is projected to rebound to a record 44.8 million metric tons in 2018/19. With rising acreage and improving yields, the Black Sea region is increasing its footprint as one of the key global suppliers of corn.

Despite increased production, however, domestic use is still lagging. Limited growth in the domestic livestock sectors, due to disease issues and economic uncertainty, has capped livestock and poultry feed use. Food, seed, and industrial use is stagnant, and storage capacity is neither abundant nor economic.

As a result, exports from the Black Sea are projected to rise in 2018/19. The Black Sea region has historically supplied the European Union market, as well as emerging economies in North Africa and the Middle East. Both Ukraine and Russia have been able to supply these key markets based on proximity to markets, small cargo sizes, shorter shipping times, and competitive pricing. As part of economic partnerships, China has been a steady destination for Ukraine corn.

With abundant supplies in key exporters, competition has become increasingly fierce in the grains market. Black Sea suppliers compete indirectly with U.S. exports, driven by export-oriented commodity sectors, tepid domestic demand, bio-tech free corn, and lower prices. Currency volatility in Brazil and export policy changes hindering Argentina will help further solidify the Black Sea as a key supplier during 2018/19.

## China: Strong Demand for Corn Supports Prices



Source: China National Grain and Oils Information Center

Various trade sources have noted that China has sold around 100 million tons of corn from the reserves via auctions through the end of October 2018. The volume represents nearly 40 percent of forecast domestic consumption for 2017/18. Despite that huge volume coming onto the market, prices in the key consuming and producing regions have remained elevated even at harvest time, reflecting strong demand for corn.

Domestic prices moved up earlier this year likely supported by various factors, such as greater use of corn feeding due to competitive prices relative to soybean meal and the rush to expand fuel ethanol production in response to the blending target of 10 percent (E10) nationwide by 2020. In addition, the government announced in February the investigation of anti-dumping and countervailing duties on imported sorghum from the United States (The investigation was dropped when punitive duties were removed in May). Convergence of these developments may have contributed to the run-up in prices in anticipation of greater demand for corn. Prices eased in the spring, but bi-weekly auctions have continued, steadily adding a large amount of corn -- comparable to Brazil's entire corn crop -- to the market. Regardless, the level of prices has remained higher than a year ago and even strengthened in recent months.

Demand for corn in China is expected to remain strong supported by greater industrial use and limited supplies for alternative feedstuffs that depend on imports, mainly sorghum and distillers' dried grains. The recent announcement by a feed association advising a lower inclusion of protein in feed rations as well as rising prices for soybean meal could further boost demand for corn.

## TRADE CHANGES IN 2018/19 (1,000 MT)

Country	Commodity	Attribute	Previous	Current	Change	Reason
<b>Argentina</b>	Corn	Exports	27,000	27,500	<b>500</b>	Larger crop
<b>European Union</b>	Corn	Imports	19,500	21,000	<b>1500</b>	Lower domestic supplies
<b>Iran</b>	Corn	Imports	8,500	9,000	<b>500</b>	Expectations of stronger feed use
<b>Kenya</b>	Corn	Imports	1,000	700	<b>-300</b>	Larger crop
<b>Mexico</b>	Sorghum	Imports	1,500	500	<b>-1,000</b>	Slow purchases from the United States
<b>Moldova</b>	Corn	Exports	400	700	<b>300</b>	Larger crop
<b>Russia</b>	Barley	Exports	4,500	4,700	<b>200</b>	Additional exportable supplies
<b>Saudi Arabia</b>	Barley	Imports	7,600	8,000	<b>400</b>	Strong first half purchases
<b>Ukraine</b>	Barley	Exports	4,300	4500	<b>200</b>	Additional exportable supplies
<b>Ukraine</b>	Corn	Exports	25,000	27,000	<b>2,000</b>	Larger crop
<b>United States</b>	Corn	Exports	62,500	62,000	<b>-500</b>	Smaller supplies
	Sorghum	Exports	4,000	3,000	<b>-1,000</b>	Slow sales pace
<b>Vietnam</b>	Corn	Imports	9,500	10,000	<b>500</b>	Stronger feed use, partly offsetting wheat

## TRADE CHANGES IN 2017/18 (1,000 MT)

Country	Commodity	Attribute	Previous	Current	Change
<b>Argentina</b>	Corn	Exports	23,500	22,952	<b>-548</b>
<b>China</b>	Corn	Imports	4,000	3,467	<b>-533</b>
<b>Iran</b>	Corn	Imports	8,300	8,900	<b>600</b>
<b>Japan</b>	Corn	Imports	15,200	15,668	<b>468</b>
<b>Paraguay</b>	Corn	Exports	2,000	1,476	<b>-524</b>
<b>South Africa</b>	Corn	Exports	2,100	2,361	<b>261</b>
<b>United States</b>	Corn	Exports	62,500	63,636	<b>1,136</b>
<b>United States</b>	Sorghum	Exports	5,200	4,961	<b>-239</b>

# **ENDNOTES**

## **REGIONAL TABLES**

North America: Canada, Mexico, the United States

Central America: Belize, Costa Rica, El Salvador, Guatemala, Honduras, Nicaragua, Panama

Caribbean: Anguilla, Antigua and Barbuda, Aruba, Bahamas, Barbados, Bermuda, British Virgin Islands, Cayman Islands, Cuba, Dominica, Dominican Republic, French West Indies, Grenada, Guadeloupe, Haiti, Jamaica and Dep, Leeward-Windward Islands, Martinique, Montserrat, Netherlands Antilles, Puerto Rico, Kitts and Nevis, St. Lucia, St. Vincent and the Grenadines, Trinidad and Tobago, Turks and Caicos Islands, U.S. Virgin Islands

South America: Argentina, Bolivia, Brazil, Chile, Colombia, Ecuador, Falkland Islands (Islas Malvinas), French Guiana, Guyana, Paraguay, Peru, Suriname, Uruguay, Venezuela

EU: Austria, Belgium/Luxembourg, Bulgaria, Croatia, Cyprus, Czech Republic, Denmark, Estonia, Finland, France, Germany, Greece, Hungary, Ireland, Italy, Latvia, Lithuania, Malta, Netherlands, Poland, Portugal, Romania, Slovakia, Slovenia, Spain, Sweden, United Kingdom

Other Europe: Albania, Azores, Bosnia and Herzegovina, Former Yugoslavia, Gibraltar, Iceland, Macedonia, Montenegro, Norway, Serbia, Switzerland

Former Soviet Union: Armenia, Azerbaijan, Belarus, Georgia, Kazakhstan, Kyrgyzstan, Moldova, Russia, Tajikistan, Turkmenistan, Ukraine, Uzbekistan

Middle East: Bahrain, Iran, Iraq, Israel, Jordan, Kuwait, Lebanon, Oman, Qatar, Saudi Arabia, Syria, Turkey, United Arab Emirates, Yemen

North Africa: Algeria, Egypt, Libya, Morocco, Tunisia

Sub-Saharan Africa: all African countries except North Africa

East Asia: China, Hong Kong, Japan, South Korea, North Korea, Macau, Mongolia, Taiwan

South Asia: Afghanistan, Bangladesh, Bhutan, India, Nepal, Pakistan, Sri Lanka, Maldives

Southeast Asia: Brunei, Burma, Cambodia, Indonesia, Laos, Malaysia, Philippines, Singapore, Thailand, Vietnam

Oceania: Australia, Fiji, New Zealand, Papua New Guinea

## OTHER NOTES

**Local Marketing Years (LMY):** LMY refers to the 12-month period at the onset of the main harvest, when the crop is marketed (i.e., consumed, traded, or stored). The year first listed begins a country's LMY for that commodity (2016/17 starts in 2016); except for summer grains in certain Southern Hemisphere countries and for rice in selected countries, where the second year begins the LMY (2016/17 starts in 2017). Key exporter LMY's are:

Wheat	Corn	Barley	Sorghum
Argentina (Dec/Nov)	Argentina (Mar/Feb)	Australia (Nov/Oct)	Argentina (Mar/Feb)
Australia (Oct/Sep)	Brazil (Mar/Feb)	Canada (Aug/Jul)	Australia (Mar/Feb)
Canada (Aug/Jul)	China (Oct/Sep)	European Union (Jul/Jun)	United States (Sep/Aug)
China (Jul/Jun)	South Africa (May/Apr)	Russia (Jul/Jun)	
European Union (Jul/Jun)	United States (Sep/Aug)	Ukraine (Jul/Jun)	
India (Apr/Mar)		United States (Jun/May)	
Kazakhstan (Jul/Jun)			
Russia (Jul/Jun)			
Turkey (Jun/May)			
Ukraine (Jul/Jun)			
United States (Jun/May)			

For a complete list of local marketing years, please see the FAS website <http://www.fas.usda.gov/psdonline/psdAvailability.aspx>

**Stocks:** Unless otherwise stated, stock data are based on an aggregate of differing local marketing years and should not be construed as representing world stock levels at a fixed point in time.

**Consumption:** World totals for consumption reflect total utilization, including food, seed, industrial, feed, and waste; as well as differences in local marketing year imports and local marketing year exports. Consumption statistics for regions and individual countries, however, reflect food, seed, industrial, feed, and waste only.

**Trade:** All PSD tables are balanced on the different local marketing years. All trade tables contain Trade Year (TY) data which puts all countries on a uniform, 12-month period for analytical comparisons: wheat is July/June; coarse grains, corn, barley, sorghum, oats, and rye are Oct/Sept; and rice is calendar year.

**EU Consolidation:** The trade figures starting from 1999/00 represent the European Union (Croatia plus the former EU-27) and exclude all intra-trade. For the years 1960/61 through 1998/99, figures are the EU-15 and also exclude all intra-trade. EU-15 member states' data for grains are no longer maintained in the official USDA database. Data for the individual NMS-10, plus Bulgaria, Romania, and Croatia, exists only prior to 1999/00.

**Statistics:** (1) Wheat trade statistics include wheat, flour, and selected pasta products on a grain equivalent basis. (2) Rice trade statistics include rough, brown, milled, and broken on a milled equivalent basis. (3) Coarse grains statistics include corn, barley, sorghum, oats, rye, millet, and mixed grains but exclude trade in barley malt, millet, and mixed grains.

**Unaccounted:** This term includes grain in transit, reporting discrepancies in some countries, and trade to countries outside the USDA database.

The Global Commodity Analysis Division, Office of Global Analysis, Foreign Agricultural Service, USDA, Washington, DC 20250, prepared this circular. Information is gathered from official statistics of foreign governments and other foreign source materials, reports of U.S. agricultural attachés and Foreign Service officers, office research, and related information. Further information may be obtained by writing the Division or telephoning (202) 720-3448.

Note: The previous report in this series was [Grain: World Markets and Trade](#) October 2018. For further details on world grain production, please see [World Agricultural Production](#) November 2018. This circular is available in its entirety on the Internet via the Foreign Agricultural Service Home Page. The address is: <http://www.fas.usda.gov>

<b>Andrew Sowell</b>	(202) 720-0262	<a href="mailto:Andrew.Sowell@fas.usda.gov">Andrew.Sowell@fas.usda.gov</a>	Wheat
<b>Shelbi Knisley</b>	(202) 690-2361	<a href="mailto:Shelbi.Knisley@fas.usda.gov">Shelbi.Knisley@fas.usda.gov</a>	Wheat
<b>Rachel Trego</b>	(202) 720-1073	<a href="mailto:Rachel.Trego@fas.usda.gov">Rachel.Trego@fas.usda.gov</a>	Rice/Wheat
<b>Nicole Podesta</b>	(202) 720-8252	<a href="mailto:Nicole.Podesta@fas.usda.gov">Nicole.Podesta@fas.usda.gov</a>	Rice
<b>Yoonhee Macke</b>	(202) 690-4199	<a href="mailto:Yoonhee.Macke@fas.usda.gov">Yoonhee.Macke@fas.usda.gov</a>	Coarse Grains
<b>Justin Choe</b>	(202) 690-4062	<a href="mailto:Justin.Cho@fas.usda.gov">Justin.Cho@fas.usda.gov</a>	Coarse Grains

# DATA TABLES

Page Intentionally Left Blank



**All Grain Summary Comparison**  
**Million Metric Tons**

Marketing Year	Wheat			Rice, Milled			Corn			
	2016/17	2017/18	2018/19	2016/17	2017/18	2018/19	2016/17	2017/18	2018/19	
<b>Production</b>										
United States	(Jun-May)	62.8	47.3	51.3	7.1	5.7	6.9	384.8	371.0	371.5
Other		693.7	715.8	682.2	483.1	488.6	483.8	737.6	705.2	727.5
<b>World Total</b>		756.5	763.1	733.5	490.2	494.3	490.7	1,122.4	1,076.2	1,099.0
<b>Domestic Consumption</b>										
United States	(Jun-May)	31.9	29.3	31.3	4.2	4.3	4.2	313.8	313.8	320.8
Other		703.6	713.9	711.5	473.5	478.3	481.6	745.3	774.2	803.1
<b>World Total</b>		735.5	743.2	742.8	477.7	482.6	485.8	1,059.1	1,088.0	1,123.9
<b>Ending Stocks</b>										
United States	(Jun-May)	32.1	29.9	25.8	1.5	0.9	1.5	58.3	54.4	44.1
Other		228.9	249.1	240.9	147.4	159.8	161.5	292.0	286.5	263.4
<b>World Total</b>		261.0	279.0	266.7	148.9	160.7	163.0	350.3	340.9	307.5
<b>TY Imports</b>										
United States	(Jun-May)	3.3	4.4	3.8	0.8	0.9	0.9	1.5	0.8	1.3
Other		175.7	174.0	171.9	44.4	45.2	45.4	137.8	148.9	155.9
<b>World Total</b>		179.0	178.4	175.7	45.2	46.1	46.3	139.3	149.7	157.2
<b>TY Exports</b>										
United States	(Jun-May)	29.3	23.1	29.0	3.3	2.9	3.2	55.6	63.6	62.0
Other		153.0	159.5	150.2	44.8	45.8	46.0	86.1	87.6	98.9
<b>World Total</b>		182.3	182.6	179.2	48.1	48.7	49.2	141.7	151.2	160.9

Note: Consumption in this table has not been adjusted for differences in marketing year imports and exports and therefore differs from global totals shown elsewhere. Marketing years for U.S. grains are: Wheat (Jun-May), Rice (Aug-Jul), Corn (Sep-Aug). 'Marketing Year' column is germane for U.S. wheat only.

**World Wheat, Flour, and Products Trade**  
**July/June Year, Thousand Metric Tons**

	2014/15	2015/16	2016/17	2017/18	2018/19 Oct	2018/19 Nov
<b>TY Exports</b>						
Argentina	4,200	8,750	12,275	13,575	13,500	13,500
Australia	16,575	15,780	22,061	15,512	13,000	11,500
Canada	24,883	22,118	20,235	21,989	24,000	24,000
China	803	729	748	1,000	1,200	1,200
European Union	35,455	34,763	27,426	23,290	23,000	23,000
Kazakhstan	5,507	7,600	7,250	8,600	8,500	8,500
Russia	22,800	25,543	27,809	41,419	35,000	35,000
Serbia	593	907	1,077	840	1,500	1,500
Turkey	4,135	5,605	6,177	6,218	6,000	6,000
Ukraine	11,269	17,431	18,107	17,775	16,500	16,500
Others	12,716	10,918	9,768	9,271	9,603	9,493
<b>Subtotal</b>	138,936	150,144	152,933	159,489	151,803	150,193
<b>United States</b>	23,023	21,817	29,319	23,067	29,000	29,000
<b>World Total</b>	161,959	171,961	182,252	182,556	180,803	179,193
<b>TY Imports</b>						
Afghanistan	2,000	2,700	2,700	2,700	3,500	3,500
Algeria	7,257	8,153	8,414	8,172	7,200	7,000
Bangladesh	3,929	4,720	5,556	6,150	6,500	6,000
Brazil	5,869	5,922	7,788	6,702	7,500	7,500
China	1,926	3,476	4,410	4,000	4,500	4,000
Colombia	1,627	2,032	2,110	1,957	2,000	2,000
Egypt	11,300	11,925	11,175	12,407	12,500	12,500
European Union	5,979	6,928	5,299	5,824	6,000	6,500
Indonesia	7,477	10,045	10,176	10,516	10,500	10,000
Iraq	2,253	2,218	2,446	4,108	3,500	3,500
Japan	5,878	5,715	5,911	5,876	5,800	5,800
Kenya	1,507	1,634	1,774	2,157	2,000	2,000
Korea, South	3,942	4,420	4,667	4,269	4,100	4,100
Mexico	4,471	4,805	5,370	5,245	5,600	5,600
Morocco	4,086	4,503	5,191	3,640	3,000	3,000
Nigeria	4,244	4,410	4,972	5,085	5,200	5,200
Peru	1,922	1,879	1,961	2,030	2,050	2,050
Philippines	5,054	4,918	5,704	5,987	5,800	5,800
Saudi Arabia	3,499	2,931	3,716	3,440	3,400	3,400
Sudan	2,632	2,021	2,458	2,578	2,500	2,500
Thailand	3,492	4,872	3,689	3,098	3,300	3,000
Turkey	5,960	4,405	4,542	6,130	4,500	4,700
Uzbekistan	2,230	2,662	2,596	3,119	3,200	3,200
Vietnam	2,292	3,070	5,535	4,655	4,800	4,500
Yemen	3,245	3,332	3,278	3,009	3,000	3,000
Others	50,755	51,927	54,287	51,217	52,016	51,646
<b>Subtotal</b>	154,826	165,623	175,725	174,071	173,966	171,996
<b>Unaccounted</b>	3,144	3,281	3,233	4,127	3,087	3,447
<b>United States</b>	3,989	3,057	3,294	4,358	3,750	3,750
<b>World Total</b>	161,959	171,961	182,252	182,556	180,803	179,193

TY=Trade Year, see Endnotes.

**World Wheat Production, Consumption, and Stocks**  
**Local Marketing Years, Thousand Metric Tons**

	2014/15	2015/16	2016/17	2017/18	2018/19 Oct	2018/19 Nov
<b>Production</b>						
Argentina	13,930	11,300	18,400	18,500	19,500	19,500
Australia	23,743	22,275	31,819	21,300	18,500	17,500
Canada	29,442	27,647	32,140	29,984	31,500	31,500
China	128,321	132,639	133,271	134,334	128,000	132,502
Egypt	8,300	8,100	8,100	8,450	8,450	8,450
European Union	156,912	160,480	145,369	151,264	137,500	137,600
India	95,850	86,530	87,000	98,510	99,700	99,700
Iran	13,000	14,500	14,500	14,000	14,500	14,500
Kazakhstan	12,996	13,748	14,985	14,802	15,000	15,000
Morocco	5,116	8,064	2,731	7,092	8,200	7,340
Pakistan	25,979	25,086	25,633	26,674	26,300	25,500
Russia	59,080	61,044	72,529	84,992	70,000	70,000
Turkey	15,250	19,500	17,250	21,000	19,000	19,000
Ukraine	24,750	27,274	26,791	26,981	25,500	25,000
Uzbekistan	7,150	7,200	6,940	6,900	6,000	6,000
Others	55,409	56,911	56,218	50,930	51,985	53,135
<b>Subtotal</b>	675,228	682,298	693,676	715,713	679,635	682,227
<b>United States</b>	55,147	56,117	62,833	47,345	51,287	51,287
<b>World Total</b>	730,375	738,415	756,509	763,058	730,922	733,514
<b>Total Consumption</b>						
Algeria	10,050	10,250	10,350	10,450	10,600	10,600
Brazil	10,700	11,100	12,200	12,000	12,100	12,100
Canada	9,118	7,969	10,803	9,156	9,000	9,000
China	117,500	117,500	119,000	121,000	122,000	123,000
Egypt	19,100	19,200	19,400	19,800	20,100	20,100
European Union	124,677	129,850	128,000	130,400	125,000	125,000
India	93,102	88,551	97,120	95,834	98,000	98,000
Indonesia	7,365	9,100	10,000	10,600	10,600	10,200
Iran	16,400	16,600	16,750	16,900	17,100	17,100
Morocco	9,000	9,800	10,200	10,400	10,600	10,600
Pakistan	24,500	24,400	24,500	25,000	25,300	25,300
Russia	35,500	37,000	40,000	44,000	40,500	40,500
Turkey	17,500	18,000	17,400	18,000	18,000	18,000
Ukraine	11,500	12,200	10,300	9,800	9,200	8,700
Uzbekistan	8,900	9,350	9,300	9,700	9,700	9,700
Others	154,127	160,871	168,294	170,876	174,098	173,648
<b>Subtotal</b>	673,798	684,363	707,964	715,765	714,521	714,531
<b>United States</b>	31,328	31,944	31,864	29,329	31,080	31,271
<b>World Total</b>	705,126	716,307	739,828	745,094	745,601	745,802
<b>Ending Stocks</b>						
Algeria	3,768	4,357	4,413	4,529	4,114	4,854
Canada	7,101	5,178	6,856	6,180	5,130	5,130
China	79,110	96,996	114,929	131,263	136,119	143,565
Egypt	4,336	4,607	3,991	4,318	4,568	4,568
European Union	12,697	15,492	10,734	14,132	10,049	10,232
India	17,220	14,540	9,800	13,203	14,603	14,603
Russia	6,287	5,607	10,830	10,868	5,868	5,868
Others	71,251	71,026	67,352	64,600	53,696	52,055
<b>Subtotal</b>	201,770	217,803	228,905	249,093	234,147	240,875
<b>United States</b>	20,477	26,552	32,131	29,907	26,028	25,837
<b>World Total</b>	222,247	244,355	261,036	279,000	260,175	266,712

## Regional Wheat Imports, Production, Consumption, and Stocks

Thousand Metric Tons

	2014/15	2015/16	2016/17	2017/18	Oct 2018/19	Nov 2018/19
<b>TY Imports</b>						
North America	9,004	8,373	9,167	10,048	9,800	9,800
Central America	1,834	1,834	1,993	1,909	1,985	1,985
South America	13,217	13,437	16,277	15,320	16,335	16,335
European Union - 28	5,979	6,928	5,299	5,824	6,000	6,500
Other Europe	1,760	1,838	1,986	1,888	1,925	1,925
Former Soviet Union - 12	7,678	7,402	7,238	8,221	8,260	8,160
Middle East	26,928	24,499	22,773	25,177	23,440	23,640
North Africa	25,430	27,873	28,273	27,409	25,900	25,700
Sub-Saharan Africa	20,906	22,817	22,182	25,025	25,495	25,295
East Asia	14,114	16,226	17,355	16,602	16,800	16,250
South Asia	8,164	8,823	15,469	10,808	11,326	10,806
Southeast Asia	20,576	25,483	27,750	26,744	27,000	25,900
Others	3,225	3,147	3,257	3,454	3,450	3,450
<b>Total</b>	<b>158,815</b>	<b>168,680</b>	<b>179,019</b>	<b>178,429</b>	<b>177,716</b>	<b>175,746</b>
<b>Production</b>						
North America	88,259	87,475	98,838	80,823	85,687	85,687
South America	24,587	21,601	28,819	25,697	27,434	27,632
European Union - 28	156,912	160,480	145,369	151,264	137,500	137,600
Other Europe	4,088	4,359	4,749	4,039	5,030	5,030
Former Soviet Union - 12	112,380	117,902	130,087	142,346	125,040	124,481
Middle East	35,414	42,405	38,791	41,525	39,860	39,860
North Africa	17,029	19,976	14,081	19,246	21,100	21,180
Sub-Saharan Africa	7,375	7,694	7,745	7,491	7,864	7,879
East Asia	129,837	133,972	134,734	135,645	129,325	133,818
South Asia	130,150	119,663	120,837	133,137	132,991	132,256
Oceania	24,157	22,689	32,278	21,709	18,960	17,960
Others	187	199	181	136	131	131
<b>Total</b>	<b>730,375</b>	<b>738,415</b>	<b>756,509</b>	<b>763,058</b>	<b>730,922</b>	<b>733,514</b>
<b>Domestic Consumption</b>						
North America	47,296	46,913	50,567	46,185	47,780	47,971
South America	27,065	27,715	28,645	29,013	29,545	29,545
European Union - 28	124,677	129,850	128,000	130,400	125,000	125,000
Other Europe	4,875	4,940	5,045	5,030	5,190	5,190
Former Soviet Union - 12	74,985	77,700	78,650	82,805	79,140	78,440
Middle East	57,240	58,887	59,061	60,493	60,730	60,730
North Africa	42,726	43,666	44,550	45,125	45,900	45,900
Sub-Saharan Africa	27,073	29,104	29,784	31,809	32,699	32,499
East Asia	130,597	130,782	132,915	134,514	135,217	136,167
South Asia	132,399	128,915	139,220	138,794	141,707	141,407
Southeast Asia	19,295	23,131	26,375	26,335	27,015	26,115
Oceania	8,565	8,500	8,835	8,905	9,155	9,955
Others	3,574	3,582	3,834	3,837	3,900	3,900
<b>Total</b>	<b>700,367</b>	<b>713,685</b>	<b>735,481</b>	<b>743,245</b>	<b>742,978</b>	<b>742,819</b>
<b>Ending Stocks</b>						
North America	28,290	32,390	39,863	36,855	31,726	31,535
South America	8,375	3,989	4,723	4,404	3,686	3,825
European Union - 28	12,697	15,492	10,734	14,132	10,049	10,232
Other Europe	1,321	1,576	1,909	1,826	1,911	1,911
Former Soviet Union - 12	20,656	16,978	21,227	19,861	13,362	13,037
Middle East	20,038	22,154	18,617	17,961	13,496	13,696
North Africa	13,216	16,628	13,890	14,631	15,046	14,926
Sub-Saharan Africa	2,983	3,798	2,994	3,097	2,796	2,812
East Asia	82,222	100,358	118,150	134,191	138,753	146,195
South Asia	23,109	21,026	16,656	20,392	21,074	20,457
Southeast Asia	3,921	5,414	5,846	5,233	4,178	3,988
Oceania	4,974	4,134	5,989	6,036	3,731	3,731
Others	445	418	438	381	367	367
<b>Total</b>	<b>222,247</b>	<b>244,355</b>	<b>261,036</b>	<b>279,000</b>	<b>260,175</b>	<b>266,712</b>

NOTES: Regional definitions appear on last page of this circular. Imports are reported on a trade year basis. All other data are reported using local marketing years.

**World Rice Trade**  
**January/December Year, Thousand Metric Tons**

	2014/15	2015/16	2016/17	2017/18	2018/19 Oct	2018/19 Nov
<b>TY Exports</b>						
Argentina	310	527	392	350	400	380
Australia	323	165	187	275	260	260
Brazil	895	641	594	1,000	850	850
Burma	1,735	1,300	3,350	3,000	3,000	3,000
Cambodia	1,150	1,050	1,150	1,250	1,300	1,300
China	262	368	1,173	1,700	1,900	1,900
European Union	251	270	369	350	350	350
Guyana	486	431	455	480	500	500
India	11,046	10,040	12,560	12,500	13,000	12,500
Pakistan	4,000	4,100	3,642	4,300	4,250	4,250
Paraguay	371	557	500	625	650	650
Russia	163	198	175	160	160	160
Thailand	9,779	9,867	11,615	10,700	11,000	11,000
Uruguay	718	996	1,051	900	800	800
Vietnam	6,606	5,088	6,488	7,000	7,000	7,000
Others	1,268	1,254	1,062	1,213	1,114	1,117
<b>Subtotal</b>	<b>39,363</b>	<b>36,852</b>	<b>44,763</b>	<b>45,803</b>	<b>46,534</b>	<b>46,017</b>
<b>United States</b>	<b>3,381</b>	<b>3,355</b>	<b>3,349</b>	<b>2,900</b>	<b>3,200</b>	<b>3,200</b>
<b>World Total</b>	<b>42,744</b>	<b>40,207</b>	<b>48,112</b>	<b>48,703</b>	<b>49,734</b>	<b>49,217</b>
<b>TY Imports</b>						
Bangladesh	598	35	2,348	1,400	1,100	600
Benin	400	450	525	550	650	650
Brazil	363	786	754	650	650	650
Burkina	350	420	500	550	600	600
Cameroon	500	500	600	650	700	700
China	5,150	4,600	5,900	5,000	5,000	5,000
Cote d'Ivoire	1,150	1,300	1,350	1,400	1,450	1,450
European Union	1,786	1,816	1,985	2,000	2,000	2,050
Ghana	580	700	650	700	680	680
Guinea	420	650	700	775	800	800
Indonesia	1,350	1,050	350	2,100	1,200	1,200
Iran	1,300	1,100	1,500	1,300	1,400	1,400
Iraq	1,000	930	1,060	1,150	1,300	1,300
Japan	688	685	679	685	685	685
Kenya	450	500	675	700	750	750
Malaysia	1,051	823	900	900	1,000	1,000
Mexico	719	731	910	850	880	880
Mozambique	575	625	710	725	750	750
Nepal	530	530	534	600	600	600
Nigeria	2,100	2,100	2,500	2,600	3,000	3,000
Philippines	2,000	800	1,200	1,900	1,800	1,800
Saudi Arabia	1,601	1,260	1,195	1,250	1,300	1,300
Senegal	990	980	1,100	1,150	1,250	1,250
South Africa	912	954	1,054	1,000	1,000	1,000
United Arab Emirates	580	670	750	825	900	900
Others	12,240	11,894	13,972	13,794	14,475	14,380
<b>Subtotal</b>	<b>39,383</b>	<b>36,889</b>	<b>44,401</b>	<b>45,204</b>	<b>45,920</b>	<b>45,375</b>
<b>Unaccounted</b>	<b>2,604</b>	<b>2,551</b>	<b>2,924</b>	<b>2,644</b>	<b>2,959</b>	<b>2,967</b>
<b>United States</b>	<b>757</b>	<b>767</b>	<b>787</b>	<b>855</b>	<b>855</b>	<b>875</b>
<b>World Total</b>	<b>42,744</b>	<b>40,207</b>	<b>48,112</b>	<b>48,703</b>	<b>49,734</b>	<b>49,217</b>

TY=Trade Year, see Endnotes. Note about dates: 2017/18 is calendar year 2018, 2016/17 is calendar year 2017, and so on.

**World Rice Production, Consumption, and Stocks**  
**Local Marketing Years, Thousand Metric Tons**

	2014/15	2015/16	2016/17	2017/18	2018/19 Oct	2018/19 Nov
<b>Milled Production</b>						
Bangladesh	34,500	34,500	34,578	32,650	34,400	34,500
Brazil	8,465	7,210	8,383	8,208	8,160	8,160
Burma	12,600	12,160	12,650	13,200	13,120	13,120
Cambodia	4,925	4,931	5,256	5,399	5,500	5,500
China	146,726	148,499	147,766	148,873	140,800	143,582
India	105,482	104,408	109,698	112,910	111,000	111,000
Indonesia	35,560	36,200	36,858	37,000	37,300	37,300
Japan	8,079	7,876	7,929	7,787	7,700	7,700
Korea, South	4,241	4,327	4,197	3,972	3,730	3,875
Nepal	3,190	2,863	3,480	3,310	3,330	3,330
Nigeria	3,782	3,941	3,780	3,780	3,780	3,780
Pakistan	7,003	6,802	6,849	7,450	7,400	7,400
Philippines	11,914	11,008	11,686	12,235	12,150	12,150
Thailand	18,750	15,800	19,200	20,370	21,200	21,200
Vietnam	28,166	27,584	27,400	28,471	29,069	29,069
Others	41,553	41,977	43,363	43,040	42,173	42,101
<b>Subtotal</b>	<b>474,936</b>	<b>470,086</b>	<b>483,073</b>	<b>488,655</b>	<b>480,812</b>	<b>483,767</b>
<b>United States</b>	<b>7,106</b>	<b>6,133</b>	<b>7,117</b>	<b>5,659</b>	<b>6,947</b>	<b>6,931</b>
<b>World Total</b>	<b>482,042</b>	<b>476,219</b>	<b>490,190</b>	<b>494,314</b>	<b>487,759</b>	<b>490,698</b>
<b>Consumption and Residual</b>						
Bangladesh	35,100	35,100	35,000	35,200	35,500	35,200
Brazil	7,925	7,900	8,000	8,025	8,025	8,025
Burma	10,500	10,400	10,000	10,100	10,100	10,100
Cambodia	3,900	3,900	4,000	4,100	4,200	4,200
China	141,000	141,028	141,761	142,487	142,500	142,782
Egypt	4,000	3,900	4,300	4,200	4,100	4,100
India	98,244	93,568	95,776	98,660	100,000	100,000
Indonesia	38,300	37,850	37,800	38,100	38,200	38,300
Japan	8,830	8,806	8,730	8,655	8,600	8,600
Korea, South	4,197	4,212	4,651	4,883	4,475	4,673
Nepal	3,770	3,353	4,010	3,910	3,930	3,930
Nigeria	6,100	6,400	6,550	6,700	6,900	6,900
Philippines	13,000	12,900	12,900	13,250	13,500	13,500
Thailand	10,000	9,100	12,000	11,170	10,200	10,200
Vietnam	22,000	22,500	22,000	21,800	22,100	22,100
Others	61,407	62,283	65,944	67,074	69,145	68,967
<b>Subtotal</b>	<b>470,379</b>	<b>465,230</b>	<b>479,386</b>	<b>478,273</b>	<b>484,249</b>	<b>484,163</b>
<b>United States</b>	<b>4,284</b>	<b>3,580</b>	<b>4,230</b>	<b>4,279</b>	<b>4,222</b>	<b>4,223</b>
<b>World Total</b>	<b>474,663</b>	<b>468,810</b>	<b>483,616</b>	<b>482,552</b>	<b>488,471</b>	<b>488,386</b>
<b>Ending Stocks</b>						
Bangladesh	1,592	1,205	854	1,500	1,600	1,600
China	76,000	88,000	98,500	109,000	96,000	113,000
India	17,800	18,400	20,550	22,600	20,000	21,100
Indonesia	4,111	3,509	2,915	3,913	4,211	4,111
Japan	2,821	2,552	2,410	2,167	1,882	1,882
Philippines	2,409	2,117	2,003	2,288	2,738	2,738
Thailand	11,270	8,403	4,238	2,988	3,438	3,238
Others	17,408	16,711	16,014	15,319	13,936	13,869
<b>Subtotal</b>	<b>133,411</b>	<b>140,897</b>	<b>147,484</b>	<b>159,775</b>	<b>143,805</b>	<b>161,538</b>
<b>United States</b>	<b>1,552</b>	<b>1,475</b>	<b>1,462</b>	<b>933</b>	<b>1,403</b>	<b>1,482</b>
<b>World Total</b>	<b>134,963</b>	<b>142,372</b>	<b>148,946</b>	<b>160,708</b>	<b>145,208</b>	<b>163,020</b>

Note: All data are reported on a milled basis.

## Regional Rice Imports, Production, Consumption, and Stocks

Thousand Metric Tons

	2014/15	2015/16	2016/17	2017/18	Oct 2018/19	Nov 2018/19
<b>TY Imports</b>						
North America	1,838	1,854	2,061	2,075	2,115	2,135
Caribbean	1,154	1,109	1,153	1,180	1,265	1,265
South America	1,686	2,015	1,888	1,929	1,830	1,830
Other Europe	128	138	124	130	130	130
Former Soviet Union - 12	572	452	539	580	615	605
Middle East	6,464	5,683	6,390	6,485	6,935	6,935
North Africa	396	483	459	515	850	850
Sub-Saharan Africa	11,313	12,179	14,619	14,950	15,880	15,880
East Asia	6,686	6,097	7,518	6,630	6,640	6,640
South Asia	1,693	945	4,006	2,725	2,475	1,900
Southeast Asia	5,677	3,933	3,676	6,055	5,160	5,160
European Union	1,786	1,816	1,985	2,000	2,000	2,050
<b>Total</b>	<b>40,140</b>	<b>37,656</b>	<b>45,188</b>	<b>46,059</b>	<b>46,775</b>	<b>46,250</b>
<b>Production</b>						
North America	7,285	6,289	7,292	5,842	7,125	7,109
Caribbean	979	865	974	1,028	1,019	1,019
South America	16,664	15,633	16,673	16,918	16,476	16,434
European Union - 28	1,954	2,050	2,087	2,000	2,004	1,964
Former Soviet Union - 12	1,180	1,257	1,259	1,225	1,187	1,197
Middle East	2,245	2,392	2,284	2,446	2,283	2,283
North Africa	4,553	4,044	4,837	4,340	2,842	2,842
Sub-Saharan Africa	15,246	16,114	16,964	16,633	17,418	17,418
East Asia	161,882	163,098	162,710	163,343	154,968	157,895
South Asia	153,259	152,213	156,964	158,893	159,086	159,186
Southeast Asia	115,591	111,409	116,821	120,496	122,210	122,210
<b>Total</b>	<b>482,042</b>	<b>476,219</b>	<b>490,190</b>	<b>494,314</b>	<b>487,759</b>	<b>490,698</b>
<b>Domestic Consumption</b>						
North America	5,517	4,807	5,499	5,561	5,534	5,535
Central America	1,196	1,275	1,296	1,300	1,370	1,342
Caribbean	2,029	1,975	2,064	2,058	2,218	2,218
South America	14,809	14,937	14,961	15,220	15,244	15,229
European Union - 28	3,400	3,550	3,600	3,700	3,750	3,750
Former Soviet Union - 12	1,503	1,498	1,551	1,595	1,619	1,619
Middle East	9,000	8,449	8,788	8,985	9,135	9,125
North Africa	4,407	4,279	4,724	4,680	4,592	4,592
Sub-Saharan Africa	27,017	28,066	30,709	31,490	32,844	32,844
East Asia	157,296	156,852	158,370	159,173	158,800	159,280
South Asia	143,183	138,767	141,637	144,520	146,430	146,005
Southeast Asia	102,642	101,770	103,895	103,746	103,581	103,681
<b>Total</b>	<b>472,557</b>	<b>466,780</b>	<b>477,652</b>	<b>482,593</b>	<b>485,697</b>	<b>485,800</b>
<b>Ending Stocks</b>						
North America	1,717	1,602	1,634	1,123	1,621	1,700
Central America	219	313	346	279	315	304
Caribbean	223	231	284	337	378	378
South America	2,211	1,640	1,760	1,876	1,593	1,616
European Union - 28	1,151	1,183	1,192	1,142	1,064	1,056
Middle East	1,742	1,214	1,133	1,024	1,057	1,057
North Africa	924	924	1,426	1,551	631	631
Sub-Saharan Africa	3,317	2,847	2,732	2,515	2,424	2,424
East Asia	80,483	92,626	103,034	112,775	99,128	116,057
South Asia	21,531	21,576	23,202	25,791	23,222	24,322
Southeast Asia	21,035	17,980	11,826	11,954	13,541	13,241
Oceania	223	77	208	177	97	97
<b>Total</b>	<b>134,963</b>	<b>142,372</b>	<b>148,946</b>	<b>160,708</b>	<b>145,208</b>	<b>163,020</b>

NOTES: Regional definitions appear on last page of this circular. Imports are reported on a trade year basis. All other data are reported using local marketing years.

**World Coarse Grain Trade**  
**October/September Year, Thousand Metric Tons**

	2014/15	2015/16	2016/17	2017/18	2018/19 Oct	2018/19 Nov
<b>TY Exports</b>						
Argentina	21,003	25,291	26,105	26,007	30,305	30,805
Australia	7,286	6,389	10,258	7,425	7,775	7,675
Brazil	21,954	35,415	19,797	25,192	25,015	25,015
Canada	3,604	4,693	5,042	5,753	5,570	5,570
European Union	15,068	10,979	8,192	7,872	7,252	7,252
Kazakhstan	508	851	859	1,360	2,060	2,060
Paraguay	3,031	2,663	1,767	1,481	2,215	2,215
Russia	9,155	8,465	9,258	11,400	7,540	7,740
Serbia	3,001	1,593	2,447	850	2,780	2,780
Ukraine	24,208	21,457	26,868	23,003	29,460	31,660
Others	8,633	7,939	9,252	10,148	8,825	9,055
<b>Subtotal</b>	117,451	125,735	119,845	120,491	128,797	131,827
<b>United States</b>	56,419	59,230	61,788	68,734	66,635	65,135
<b>World Total</b>	173,870	184,965	181,633	189,225	195,432	196,962
<b>TY Imports</b>						
Algeria	4,863	5,224	4,459	4,757	4,825	4,675
Bangladesh	485	1,036	1,181	1,500	2,000	2,000
Brazil	1,023	2,123	3,177	1,528	1,650	1,650
Chile	1,707	1,721	1,580	1,995	2,130	2,130
China	25,699	17,499	16,055	16,540	16,900	16,900
Colombia	4,747	4,824	5,007	5,335	5,535	5,535
Dominican Republic	1,202	1,351	1,294	1,400	1,400	1,400
Egypt	7,938	8,795	8,795	9,477	9,720	9,720
European Union	9,408	14,490	15,633	18,939	20,855	22,355
Guatemala	881	1,027	951	1,100	1,200	1,200
Iran	8,000	8,300	10,000	12,100	11,500	12,000
Israel	1,601	1,509	1,940	2,045	1,985	1,985
Japan	16,726	17,073	17,000	17,581	16,770	16,770
Jordan	1,448	1,713	1,588	1,360	1,400	1,400
Korea, South	10,274	10,213	9,308	10,199	10,390	10,390
Malaysia	3,243	4,122	3,531	3,650	4,000	4,000
Mexico	11,640	14,881	15,238	16,460	18,310	17,310
Morocco	2,217	3,182	2,575	3,072	2,802	2,702
Peru	2,863	3,083	3,438	3,410	3,560	3,560
Saudi Arabia	11,115	13,992	11,825	11,800	12,610	13,010
Taiwan	3,938	4,781	4,267	4,210	4,100	4,100
Tunisia	1,525	1,713	1,745	1,827	1,500	1,500
Turkey	2,719	713	1,712	3,505	2,305	2,305
Venezuela	2,433	1,738	1,240	1,600	1,600	1,600
Vietnam	6,752	8,679	8,661	9,350	9,625	10,125
Others	21,683	22,777	22,217	19,865	18,898	18,730
<b>Subtotal</b>	166,130	176,559	174,417	184,605	187,570	189,052
<b>Unaccounted</b>	4,445	4,425	3,802	1,694	4,362	4,410
<b>United States</b>	3,295	3,981	3,414	2,926	3,500	3,500
<b>World Total</b>	173,870	184,965	181,633	189,225	195,432	196,962

TY=Trade Year, see Endnotes.



**World Coarse Grains Production, Consumption, and Stocks**  
**Local Marketing Years, Thousand Metric Tons**

	2014/15	2015/16	2016/17	2017/18	2018/19 Oct	2018/19 Nov
<b>Production</b>						
Argentina	36,782	38,439	48,569	39,320	48,853	50,353
Australia	12,605	12,544	17,266	11,908	11,296	11,096
Brazil	87,671	68,649	101,575	84,792	97,485	97,485
Canada	22,107	25,769	26,623	26,235	27,225	26,950
China	256,523	271,847	270,928	266,571	232,805	263,805
Ethiopia	14,442	15,149	15,094	13,960	14,180	14,180
European Union	170,670	152,665	152,829	152,492	148,428	146,692
India	43,076	38,701	43,470	46,970	42,250	42,250
Indonesia	9,000	10,500	10,900	11,400	11,900	11,900
Mexico	32,689	32,378	33,263	33,071	31,690	31,490
Nigeria	18,341	19,052	18,823	18,800	19,300	19,300
Russia	40,386	37,427	40,765	41,712	34,475	34,725
South Africa	11,079	8,658	18,117	14,000	13,598	13,608
Turkey	9,311	14,181	10,776	12,971	13,451	13,451
Ukraine	39,389	33,387	39,217	34,071	39,695	42,195
Others	164,677	156,434	162,920	164,566	167,300	168,679
<b>Subtotal</b>	968,748	935,780	1,011,135	972,839	953,931	988,159
<b>United States</b>	377,234	367,009	402,612	384,255	389,437	385,117
<b>World Total</b>	1,345,982	1,302,789	1,413,747	1,357,094	1,343,368	1,373,276
<b>Domestic Consumption</b>						
Argentina	14,232	14,221	16,044	16,413	16,953	16,953
Brazil	60,009	59,823	64,032	68,011	70,042	70,042
Canada	21,299	20,909	21,971	23,282	22,735	22,760
China	232,709	250,290	275,948	284,080	270,530	295,530
Egypt	14,832	15,803	16,027	16,779	17,078	17,138
Ethiopia	13,680	15,215	15,142	14,135	14,085	14,085
European Union	162,592	157,125	160,840	162,670	165,320	165,070
India	40,474	40,201	42,375	44,875	44,225	44,175
Iran	12,020	14,020	13,820	15,820	15,920	16,220
Japan	16,876	17,258	17,252	17,747	17,214	17,214
Mexico	42,175	44,715	46,845	48,210	50,840	49,840
Nigeria	18,132	18,990	19,219	18,850	19,500	19,500
Russia	31,139	29,715	32,075	31,015	27,625	27,625
Saudi Arabia	11,905	14,075	13,615	12,895	13,475	13,775
Turkey	12,951	14,021	12,891	15,631	15,961	15,961
Others	248,430	248,351	257,116	258,973	259,989	260,249
<b>Subtotal</b>	969,575	957,141	1,051,232	1,047,659	1,050,137	1,074,815
<b>United States</b>	311,339	312,599	327,523	324,145	334,539	334,080
<b>World Total</b>	1,280,914	1,269,740	1,378,755	1,371,804	1,384,676	1,408,895
<b>Ending Stocks</b>						
Argentina	4,274	3,268	6,698	3,505	5,105	5,605
Brazil	8,235	7,010	14,492	10,864	10,842	10,842
Canada	3,513	4,971	5,562	4,507	4,037	3,737
China	174,300	213,329	224,253	223,222	59,375	208,327
European Union	18,885	15,739	15,202	16,093	13,236	12,818
Mexico	4,832	5,889	6,009	6,024	3,684	3,484
Ukraine	3,291	3,171	2,997	2,719	2,304	2,404
Others	52,190	48,028	47,128	44,946	37,915	39,435
<b>Subtotal</b>	269,520	301,405	322,341	311,880	136,498	286,652
<b>United States</b>	46,948	48,112	62,168	57,919	49,434	47,528
<b>World Total</b>	316,468	349,517	384,509	369,799	185,932	334,180

## Regional Coarse Grains Imports, Production, Consumption, and Stocks

Thousand Metric Tons

	2014/15	2015/16	2016/17	2017/18	Oct 2018/19	Nov 2018/19
<b>TY Imports</b>						
North America	16,658	19,968	19,430	21,223	22,420	21,420
Central America	3,456	3,938	3,799	4,030	4,200	4,200
Caribbean	2,444	2,597	2,659	2,720	2,840	2,840
South America	13,355	13,855	15,053	14,793	15,240	15,240
European Union - 28	9,408	14,490	15,633	18,939	20,855	22,355
Former Soviet Union - 12	745	551	831	825	680	790
Middle East	27,608	29,734	30,541	34,177	32,626	33,526
North Africa	18,228	20,819	19,337	20,233	19,947	19,697
Sub-Saharan Africa	4,083	6,057	6,684	3,514	4,221	3,921
East Asia	56,684	49,600	46,723	48,580	48,210	48,210
Southeast Asia	14,786	15,895	14,169	15,217	15,755	16,255
Others	1,970	3,036	2,972	3,280	4,076	4,098
<b>Total</b>	<b>169,425</b>	<b>180,540</b>	<b>177,831</b>	<b>187,531</b>	<b>191,070</b>	<b>192,552</b>
<b>Production</b>						
North America	432,030	425,156	462,498	443,561	448,352	443,557
South America	139,744	122,016	163,180	137,545	161,248	162,583
European Union - 28	170,670	152,665	152,829	152,492	148,428	146,692
Other Europe	10,927	9,271	11,415	7,188	10,511	10,511
Former Soviet Union - 12	91,963	82,740	92,737	88,793	88,558	91,398
Middle East	17,036	21,605	18,083	20,582	20,225	20,125
North Africa	10,927	12,289	9,263	11,177	12,432	13,392
Sub-Saharan Africa	109,841	102,225	116,714	114,891	110,709	111,219
East Asia	259,203	274,579	273,568	269,233	235,519	266,518
South Asia	54,649	50,627	56,597	60,459	56,539	56,539
Southeast Asia	30,949	31,988	34,006	33,751	34,143	34,143
Oceania	13,283	13,236	17,883	12,388	11,928	11,728
Others	4,760	4,392	4,974	5,034	4,776	4,871
<b>Total</b>	<b>1,345,982</b>	<b>1,302,789</b>	<b>1,413,747</b>	<b>1,357,094</b>	<b>1,343,368</b>	<b>1,373,276</b>
<b>Domestic Consumption</b>						
North America	374,813	378,223	396,339	395,637	408,114	406,680
South America	98,737	98,462	103,175	109,314	112,726	112,561
European Union - 28	162,592	157,125	160,840	162,670	165,320	165,070
Other Europe	8,347	8,553	9,025	7,851	8,277	8,277
Former Soviet Union - 12	58,467	53,574	56,364	54,184	50,573	50,743
Middle East	45,556	51,650	50,391	54,147	53,991	54,491
North Africa	30,168	32,142	30,943	31,486	31,863	32,023
Sub-Saharan Africa	109,569	107,731	115,484	114,238	114,828	114,978
East Asia	266,489	284,666	309,402	318,798	305,012	330,012
South Asia	52,617	53,841	56,659	60,916	61,045	60,795
Southeast Asia	41,253	44,038	45,979	46,798	47,385	47,585
Oceania	5,846	6,429	6,759	5,806	4,981	4,991
Others	10,340	10,897	11,375	11,686	11,916	12,011
<b>Total</b>	<b>1,264,794</b>	<b>1,287,331</b>	<b>1,352,735</b>	<b>1,373,531</b>	<b>1,376,031</b>	<b>1,400,217</b>
<b>Ending Stocks</b>						
North America	55,293	58,972	73,739	68,450	57,155	54,749
South America	15,928	13,618	24,407	17,356	18,993	19,693
European Union - 28	18,885	15,739	15,202	16,093	13,236	12,818
Other Europe	1,102	963	1,631	823	1,057	1,057
Former Soviet Union - 12	7,926	6,316	6,924	5,820	4,869	5,010
Middle East	8,999	9,204	5,940	6,723	5,141	5,688
North Africa	5,412	5,853	3,783	3,402	3,914	4,518
Sub-Saharan Africa	12,434	10,244	12,400	12,822	9,902	10,014
East Asia	178,202	217,691	228,431	227,414	63,070	212,060
South Asia	5,328	3,100	4,184	5,071	3,513	3,401
Southeast Asia	4,171	5,057	3,890	2,862	2,917	3,060
Oceania	1,665	1,619	2,780	1,771	1,088	1,035
Others	1,123	1,141	1,198	1,192	1,077	1,077
<b>Total</b>	<b>316,468</b>	<b>349,517</b>	<b>384,509</b>	<b>369,799</b>	<b>185,932</b>	<b>334,180</b>

NOTES: Regional definitions appear on last page of this circular. Imports are reported on a trade year basis. All other data are reported using local marketing years.

**World Corn Trade**  
**October/September Year, Thousand Metric Tons**

	2014/15	2015/16	2016/17	2017/18	2018/19 Oct	2018/19 Nov
<b>TY Exports</b>						
Argentina	18,448	21,679	22,951	22,952	27,000	27,500
Brazil	21,909	35,382	19,794	25,182	25,000	25,000
Canada	395	1,767	1,544	1,973	1,600	1,600
European Union	4,027	1,953	2,189	1,700	1,500	1,500
Mexico	784	1,559	1,539	1,300	1,500	1,500
Paraguay	3,012	2,662	1,757	1,476	2,200	2,200
Russia	3,213	4,691	5,589	5,500	3,000	3,000
Serbia	2,964	1,560	2,414	800	2,700	2,700
South Africa	746	759	1,816	2,361	1,900	1,900
Ukraine	19,661	16,595	21,334	18,500	25,000	27,000
Others	6,400	5,225	5,187	5,795	4,700	5,005
<b>Subtotal</b>	<b>81,559</b>	<b>93,832</b>	<b>86,114</b>	<b>87,539</b>	<b>96,100</b>	<b>98,905</b>
<b>United States</b>	<b>46,831</b>	<b>51,098</b>	<b>55,593</b>	<b>63,636</b>	<b>62,500</b>	<b>62,000</b>
<b>World Total</b>	<b>128,390</b>	<b>144,930</b>	<b>141,707</b>	<b>151,175</b>	<b>158,600</b>	<b>160,905</b>
<b>TY Imports</b>						
Algeria	4,116	4,329	3,915	4,200	4,400	4,400
Bangladesh	485	1,036	1,181	1,500	2,000	2,000
Brazil	534	1,566	2,439	943	1,000	1,000
Chile	1,516	1,539	1,484	1,900	2,000	2,000
China	5,516	3,174	2,464	3,467	5,000	5,000
Colombia	4,496	4,458	4,748	5,000	5,200	5,200
Cuba	886	853	964	900	1,000	1,000
Dominican Republic	1,202	1,351	1,294	1,400	1,400	1,400
Egypt	7,839	8,722	8,773	9,400	9,700	9,700
European Union	8,908	14,008	14,973	18,000	19,500	21,000
Guatemala	881	1,027	951	1,100	1,200	1,200
Iran	6,100	6,600	7,800	8,900	8,500	9,000
Israel	1,294	1,156	1,539	1,800	1,700	1,700
Japan	14,657	15,204	15,169	15,668	15,000	15,000
Korea, South	10,168	10,121	9,220	10,006	10,200	10,200
Malaysia	3,243	4,122	3,531	3,650	4,000	4,000
Mexico	11,341	14,011	14,569	16,200	16,700	16,700
Morocco	1,941	2,224	2,164	2,600	2,600	2,600
Peru	2,741	2,985	3,269	3,300	3,400	3,400
Saudi Arabia	2,904	3,583	3,421	4,000	5,000	5,000
Taiwan	3,810	4,656	4,163	4,100	4,000	4,000
Tunisia	1,042	1,017	1,244	1,100	1,100	1,100
Turkey	2,377	567	1,421	2,800	2,200	2,200
Venezuela	2,433	1,738	1,238	1,600	1,600	1,600
Vietnam	6,700	8,600	8,500	9,200	9,500	10,000
Others	17,761	18,323	17,420	16,082	15,698	15,520
<b>Subtotal</b>	<b>124,891</b>	<b>136,970</b>	<b>137,854</b>	<b>148,816</b>	<b>153,598</b>	<b>155,920</b>
<b>Unaccounted</b>	<b>2,690</b>	<b>6,178</b>	<b>2,402</b>	<b>1,513</b>	<b>3,702</b>	<b>3,685</b>
<b>United States</b>	<b>809</b>	<b>1,782</b>	<b>1,451</b>	<b>846</b>	<b>1,300</b>	<b>1,300</b>
<b>World Total</b>	<b>128,390</b>	<b>144,930</b>	<b>141,707</b>	<b>151,175</b>	<b>158,600</b>	<b>160,905</b>

TY=Trade Year, see Endnotes.

**World Corn Production, Consumption, and Stocks**  
**Local Marketing Years, Thousand Metric Tons**

	2014/15	2015/16	2016/17	2017/18	2018/19 Oct	2018/19 Nov
<b>Production</b>						
Argentina	29,750	29,500	41,000	32,000	41,000	42,500
Brazil	85,000	67,000	98,500	82,000	94,500	94,500
Canada	11,606	13,680	13,889	14,100	14,500	14,500
China	249,764	264,992	263,613	259,071	225,000	256,000
Ethiopia	7,235	7,300	7,300	7,000	7,100	7,100
European Union	75,734	58,748	61,884	62,104	61,000	59,500
India	24,170	22,570	25,900	28,720	26,000	26,000
Indonesia	9,000	10,500	10,900	11,400	11,900	11,900
Mexico	25,480	25,971	27,575	27,450	26,000	26,000
Nigeria	10,059	10,562	10,415	11,000	11,000	11,000
Philippines	7,671	6,966	8,087	7,980	8,200	8,200
Russia	11,325	13,168	15,305	13,229	11,000	11,250
Serbia	7,700	6,000	7,600	4,000	7,000	7,000
South Africa	10,629	8,214	17,551	13,525	13,000	13,000
Ukraine	28,450	23,333	27,969	24,115	31,000	33,500
Others	102,115	99,212	100,181	107,577	104,731	105,485
<b>Subtotal</b>	695,688	667,716	737,669	705,271	692,931	727,435
<b>United States</b>	361,091	345,506	384,778	370,960	375,374	371,517
<b>World Total</b>	1,056,779	1,013,222	1,122,447	1,076,231	1,068,305	1,098,952
<b>Total Consumption</b>						
Argentina	9,300	9,300	11,200	11,900	12,400	12,400
Brazil	57,000	57,500	60,500	64,500	66,500	66,500
Canada	12,823	12,029	12,949	14,068	13,700	13,700
China	206,000	229,000	255,000	263,000	251,000	276,000
Egypt	13,900	14,850	15,100	15,900	16,200	16,200
European Union	77,880	73,500	74,000	76,500	82,500	82,500
India	22,350	23,550	24,900	26,700	27,500	27,500
Indonesia	12,200	12,100	12,300	12,100	12,500	12,500
Iran	7,400	8,800	9,300	9,800	9,800	10,100
Japan	14,600	15,200	15,200	15,600	15,200	15,200
Korea, South	10,250	10,123	9,435	10,000	10,300	10,300
Mexico	34,550	37,300	40,400	42,300	43,700	43,700
Nigeria	9,900	10,600	10,900	11,100	11,300	11,300
South Africa	11,650	10,970	12,663	12,300	12,600	12,600
Vietnam	9,400	12,200	12,900	13,400	13,100	13,400
Others	163,581	164,548	168,502	175,030	178,643	179,158
<b>Subtotal</b>	690,057	682,150	769,775	771,750	785,078	811,541
<b>United States</b>	301,792	298,844	313,828	313,834	322,087	320,817
<b>World Total</b>	991,849	980,994	1,083,603	1,085,584	1,107,165	1,132,358
<b>Ending Stocks</b>						
Argentina	2,898	1,448	5,273	2,378	3,983	4,483
Brazil	7,842	6,769	14,019	10,519	10,519	10,519
Canada	1,518	2,450	2,574	2,369	2,069	2,069
China	172,855	212,017	223,017	222,536	58,504	207,486
Egypt	2,358	2,224	1,887	1,777	2,067	2,067
European Union	9,626	6,929	7,597	9,501	6,010	6,001
Mexico	4,090	5,213	5,418	5,468	2,968	2,968
Others	34,035	30,251	32,230	32,000	27,170	27,812
<b>Subtotal</b>	235,222	267,301	292,015	286,548	113,290	263,405
<b>United States</b>	43,974	44,123	58,253	54,367	46,056	44,104
<b>World Total</b>	279,196	311,424	350,268	340,915	159,346	307,509

## Regional Corn Imports, Production, Consumption, and Stocks

Thousand Metric Tons

	2014/15	2015/16	2016/17	2017/18	Oct 2018/19	Nov 2018/19
<b>TY Imports</b>						
North America	13,686	16,751	16,706	18,813	18,500	18,500
Central America	3,456	3,938	3,799	4,030	4,200	4,200
South America	12,042	12,462	13,713	13,523	13,865	13,865
European Union - 28	8,908	14,008	14,973	18,000	19,500	21,000
Former Soviet Union - 12	500	361	374	500	345	445
Middle East	15,157	14,890	16,944	20,470	20,300	20,800
North Africa	15,622	16,873	16,775	17,900	18,600	18,600
Sub-Saharan Africa	3,323	5,408	5,902	2,678	3,243	2,943
East Asia	34,198	33,189	31,109	33,291	34,250	34,250
Southeast Asia	14,702	15,781	13,968	14,900	15,595	16,095
Caribbean	2,444	2,597	2,657	2,720	2,840	2,840
Others	1,662	2,494	2,385	2,837	3,660	3,682
<b>Total</b>	<b>125,700</b>	<b>138,752</b>	<b>139,305</b>	<b>149,662</b>	<b>154,898</b>	<b>157,220</b>
<b>Production</b>						
North America	398,177	385,157	426,242	412,510	415,874	412,017
South America	127,570	108,837	149,824	124,982	147,535	148,905
European Union - 28	75,734	58,748	61,884	62,104	61,000	59,500
Other Europe	9,132	7,427	9,432	5,335	8,595	8,595
Former Soviet Union - 12	44,188	40,147	47,791	42,069	46,760	49,800
Middle East	6,904	7,791	6,995	7,786	7,066	7,066
North Africa	6,058	6,096	6,130	6,601	6,951	6,951
Sub-Saharan Africa	66,809	62,116	71,544	73,829	69,236	69,736
East Asia	252,113	267,431	265,949	261,417	227,406	258,405
South Asia	34,398	33,221	37,764	40,986	39,086	39,086
Central America	3,588	3,278	3,780	3,840	3,630	3,630
Southeast Asia	30,655	31,693	33,716	33,461	33,853	33,853
Others	1,453	1,280	1,396	1,311	1,313	1,408
<b>Total</b>	<b>1,056,779</b>	<b>1,013,222</b>	<b>1,122,447</b>	<b>1,076,231</b>	<b>1,068,305</b>	<b>1,098,952</b>
<b>Domestic Consumption</b>						
North America	349,165	348,173	367,177	370,202	379,487	378,217
South America	87,601	87,971	91,723	98,100	101,310	101,180
European Union - 28	77,880	73,500	74,000	76,500	82,500	82,500
Other Europe	6,297	6,522	6,932	5,835	6,250	6,250
Former Soviet Union - 12	21,071	19,582	20,511	18,635	18,895	19,585
Middle East	21,738	23,502	24,533	27,330	27,760	28,060
North Africa	22,100	22,990	23,290	24,500	25,150	25,150
Sub-Saharan Africa	66,881	66,854	69,933	72,341	72,542	72,692
East Asia	237,127	260,967	286,087	295,130	283,050	308,050
South Asia	33,123	35,630	37,885	41,389	43,081	42,881
Southeast Asia	40,849	43,634	45,497	46,195	46,940	47,140
Central America	6,760	7,180	7,520	7,780	7,890	7,890
Others	3,984	3,909	3,989	4,095	4,175	4,280
<b>Total</b>	<b>974,576</b>	<b>1,000,414</b>	<b>1,059,077</b>	<b>1,088,032</b>	<b>1,099,030</b>	<b>1,123,875</b>
<b>Ending Stocks</b>						
North America	49,582	51,786	66,245	62,204	51,093	49,141
South America	13,743	11,209	22,182	15,580	17,180	17,880
European Union - 28	9,626	6,929	7,597	9,501	6,010	6,001
Other Europe	896	849	1,471	698	918	918
Former Soviet Union - 12	3,155	2,602	3,070	2,500	2,260	2,410
Middle East	3,727	2,751	2,039	2,735	2,299	2,446
North Africa	3,259	2,988	2,555	2,488	2,879	2,879
Sub-Saharan Africa	9,580	7,688	9,973	10,808	7,978	8,080
East Asia	176,305	215,956	226,814	226,403	61,939	210,958
South Asia	3,940	2,388	3,147	3,845	2,734	2,550
Southeast Asia	4,165	5,051	3,879	2,851	2,906	3,049
Central America	759	794	850	847	772	772
Others	459	433	446	455	378	425
<b>Total</b>	<b>279,196</b>	<b>311,424</b>	<b>350,268</b>	<b>340,915</b>	<b>159,346</b>	<b>307,509</b>

NOTES: Regional definitions appear on last page of this circular. Imports are reported on a trade year basis. All other data are reported using local marketing years.

**World Barley Trade**  
**October/September Year, Thousand Metric Tons**

	2014/15	2015/16	2016/17	2017/18	2018/19 Oct	2018/19 Nov
<b>TY Exports</b>						
Argentina	1,599	2,836	2,696	2,500	2,800	2,800
Australia	5,266	5,401	9,192	6,500	5,800	5,700
Canada	1,386	1,147	1,809	1,868	2,200	2,200
European Union	10,642	8,644	5,683	5,900	5,300	5,300
Kazakhstan	475	776	821	1,300	2,000	2,000
Russia	5,807	3,735	3,626	5,800	4,500	4,700
Serbia	37	33	33	50	80	80
Turkey	4	0	14	20	100	100
Ukraine	4,332	4,673	5,337	4,300	4,300	4,500
Uruguay	43	42	111	5	150	150
Others	208	108	157	171	200	125
<b>Subtotal</b>	29,799	27,395	29,479	28,414	27,430	27,655
<b>United States</b>	291	161	125	102	100	100
<b>World Total</b>	30,090	27,556	29,604	28,516	27,530	27,755
<b>TY Imports</b>						
Algeria	723	864	533	550	400	250
Belarus	1	7	112	60	100	100
Brazil	489	551	737	584	650	650
Canada	165	131	74	56	100	100
China	9,859	5,869	8,104	8,137	9,500	9,500
Colombia	249	301	258	280	280	280
European Union	269	315	447	450	500	500
India	2	67	325	100	100	100
Iran	1,900	1,700	2,200	3,200	3,000	3,000
Israel	278	319	376	200	250	250
Japan	1,097	1,154	1,197	1,253	1,100	1,100
Jordan	759	902	759	720	600	600
Kuwait	412	511	569	550	200	200
Libya	1,001	1,324	1,084	500	300	300
Morocco	276	958	407	470	200	100
Peru	122	98	169	100	150	150
Saudi Arabia	8,200	10,400	8,400	7,700	7,600	8,000
Tunisia	483	696	501	727	400	400
United Arab Emirates	393	668	501	250	400	400
Vietnam	52	79	161	150	125	125
Others	1,742	1,166	1,596	1,877	936	946
<b>Subtotal</b>	28,472	28,080	28,510	27,914	26,891	27,051
<b>Unaccounted</b>	1,188	-876	877	432	239	304
<b>United States</b>	430	352	217	170	400	400
<b>World Total</b>	30,090	27,556	29,604	28,516	27,530	27,755

TY=Trade Year, see Endnotes.

**World Barley Production, Consumption, and Stocks**  
**Local Marketing Years, Thousand Metric Tons**

	2014/15	2015/16	2016/17	2017/18	2018/19 Oct	2018/19 Nov
<b>Production</b>						
Algeria	1,300	1,300	1,000	968	1,400	1,950
Argentina	2,900	4,940	3,300	3,740	4,000	4,000
Australia	8,646	8,993	13,506	8,900	7,800	7,400
Belarus	1,988	1,849	1,253	1,420	1,700	1,700
Canada	7,117	8,257	8,839	7,900	8,800	8,500
China	1,810	1,870	1,752	1,800	1,850	1,850
Ethiopia	1,953	2,047	2,025	2,100	2,170	2,170
European Union	60,609	62,095	59,866	58,837	57,250	57,350
India	1,831	1,613	1,440	1,750	1,770	1,770
Iran	3,200	3,200	3,000	3,100	3,100	3,100
Kazakhstan	2,412	2,675	3,231	3,305	4,200	4,200
Morocco	1,638	3,400	620	2,000	2,500	2,910
Russia	20,026	17,083	17,547	20,183	16,500	16,500
Turkey	4,000	7,400	4,750	6,400	7,400	7,400
Ukraine	9,450	8,751	9,874	8,695	7,600	7,600
Others	9,151	9,552	10,699	9,851	9,881	9,591
<b>Subtotal</b>	<b>138,031</b>	<b>145,025</b>	<b>142,702</b>	<b>140,949</b>	<b>137,921</b>	<b>137,991</b>
<b>United States</b>	<b>3,953</b>	<b>4,750</b>	<b>4,353</b>	<b>3,090</b>	<b>3,333</b>	<b>3,333</b>
<b>World Total</b>	<b>141,984</b>	<b>149,775</b>	<b>147,055</b>	<b>144,039</b>	<b>141,254</b>	<b>141,324</b>
<b>Total Consumption</b>						
Algeria	2,050	2,150	2,050	1,750	1,900	1,900
Australia	3,000	3,300	3,500	3,100	2,500	2,400
Belarus	2,000	1,850	1,400	1,450	1,750	1,750
Canada	6,471	6,960	6,760	6,808	6,800	6,800
China	11,600	7,900	9,800	10,300	11,100	11,100
Ethiopia	1,975	1,990	2,025	2,075	2,125	2,125
European Union	50,937	51,375	55,100	54,200	52,400	52,400
India	1,400	1,520	1,650	1,950	1,900	1,850
Iran	4,600	5,200	4,500	6,000	6,100	6,100
Kazakhstan	2,000	2,000	2,200	2,150	2,200	2,200
Morocco	2,638	3,350	2,200	2,450	2,450	2,550
Russia	14,100	13,700	14,700	14,500	12,400	12,200
Saudi Arabia	8,525	10,225	9,825	8,525	8,225	8,525
Turkey	5,350	6,900	5,500	6,700	7,300	7,300
Ukraine	5,500	4,300	4,900	4,500	3,500	3,300
Others	17,045	18,487	18,857	17,705	16,205	16,045
<b>Subtotal</b>	<b>138,270</b>	<b>143,264</b>	<b>145,971</b>	<b>144,601</b>	<b>139,276</b>	<b>138,971</b>
<b>United States</b>	<b>4,235</b>	<b>4,408</b>	<b>4,375</b>	<b>3,436</b>	<b>3,702</b>	<b>3,702</b>
<b>World Total</b>	<b>142,505</b>	<b>147,672</b>	<b>150,346</b>	<b>148,037</b>	<b>142,978</b>	<b>142,673</b>
<b>Ending Stocks</b>						
Algeria	1,304	1,291	877	627	527	927
Canada	1,260	1,523	2,120	1,250	1,150	850
European Union	5,834	6,012	5,509	4,697	5,086	4,847
Iran	1,058	758	458	758	758	758
Saudi Arabia	3,074	4,059	2,344	1,829	914	1,314
Turkey	332	961	338	771	871	871
Ukraine	1,565	1,609	1,237	1,137	947	947
Others	8,099	7,904	7,850	5,925	5,268	5,282
<b>Subtotal</b>	<b>22,526</b>	<b>24,117</b>	<b>20,733</b>	<b>16,994</b>	<b>15,521</b>	<b>15,796</b>
<b>United States</b>	<b>1,711</b>	<b>2,223</b>	<b>2,316</b>	<b>2,057</b>	<b>1,906</b>	<b>1,906</b>
<b>World Total</b>	<b>24,237</b>	<b>26,340</b>	<b>23,049</b>	<b>19,051</b>	<b>17,427</b>	<b>17,702</b>

## Regional Barley Imports, Production, Consumption, and Stocks

Thousand Metric Tons

	2014/15	2015/16	2016/17	2017/18	Oct 2018/19	Nov 2018/19
<b>TY Imports</b>						
North America	779	615	293	236	510	510
South America	1,169	1,133	1,249	1,094	1,150	1,150
European Union - 28	269	315	447	450	500	500
Other Europe	124	81	121	100	125	125
Former Soviet Union - 12	239	162	439	300	305	315
Middle East	12,399	14,798	13,563	13,555	12,275	12,675
North Africa	2,581	3,914	2,542	2,323	1,320	1,070
Sub-Saharan Africa	138	40	112	48	55	55
East Asia	11,080	7,136	9,413	9,520	10,740	10,740
South Asia	22	133	341	131	136	136
Oceania	32	7	25	30	25	25
<b>Total</b>	<b>28,902</b>	<b>28,432</b>	<b>28,727</b>	<b>28,084</b>	<b>27,291</b>	<b>27,451</b>
<b>Production</b>						
North America	11,916	13,742	14,170	11,994	13,133	12,833
South America	3,795	5,925	4,714	4,831	5,395	5,395
European Union - 28	60,609	62,095	59,866	58,837	57,250	57,350
Other Europe	1,241	1,258	1,388	1,284	1,337	1,337
Former Soviet Union - 12	35,542	32,547	34,175	35,625	32,207	32,007
Middle East	8,896	12,674	10,118	11,690	12,088	11,988
North Africa	3,913	5,275	2,203	3,646	4,553	5,513
Sub-Saharan Africa	2,423	2,549	2,556	2,577	2,730	2,740
East Asia	2,136	2,159	2,052	2,112	2,154	2,154
South Asia	2,461	2,121	1,943	2,247	2,227	2,227
Oceania	9,052	9,430	13,870	9,196	8,180	7,780
<b>Total</b>	<b>141,984</b>	<b>149,775</b>	<b>147,055</b>	<b>144,039</b>	<b>141,254</b>	<b>141,324</b>
<b>Domestic Consumption</b>						
North America	11,556	12,293	12,085	11,254	11,552	11,552
South America	3,398	3,533	3,449	3,515	3,476	3,476
European Union - 28	50,937	51,375	55,100	54,200	52,400	52,400
Other Europe	1,414	1,373	1,449	1,357	1,377	1,377
Former Soviet Union - 12	25,454	23,889	25,429	24,713	22,057	21,537
Middle East	22,369	26,961	24,834	25,569	25,114	25,314
North Africa	7,120	8,203	6,697	6,049	5,758	5,918
Sub-Saharan Africa	2,471	2,565	2,609	2,630	2,700	2,700
East Asia	13,164	9,482	11,446	12,052	12,705	12,705
South Asia	2,023	2,093	2,173	2,513	2,368	2,318
Oceania	3,450	3,750	3,900	3,450	2,900	2,800
<b>Total</b>	<b>143,426</b>	<b>145,615</b>	<b>149,342</b>	<b>147,599</b>	<b>142,557</b>	<b>142,247</b>
<b>Ending Stocks</b>						
North America	3,369	4,132	4,851	3,721	3,430	3,130
South America	773	1,141	838	748	767	767
European Union - 28	5,834	6,012	5,509	4,697	5,086	4,847
Other Europe	160	79	107	79	84	84
Former Soviet Union - 12	3,771	3,021	3,058	2,543	2,062	2,053
Middle East	5,208	6,385	3,856	3,933	2,782	3,182
North Africa	2,105	2,816	1,174	857	978	1,582
Sub-Saharan Africa	434	436	488	480	565	575
East Asia	1,090	904	923	503	755	692
South Asia	294	274	292	261	184	256
Oceania	1,199	1,140	1,942	1,218	723	523
<b>Total</b>	<b>24,237</b>	<b>26,340</b>	<b>23,049</b>	<b>19,051</b>	<b>17,427</b>	<b>17,702</b>

NOTES: Regional definitions appear on last page of this circular. Imports are reported on a trade year basis. All other data are reported using local marketing years.



**World Sorghum Trade**  
**October/September Year, Thousand Metric Tons**

	2014/15	2015/16	2016/17	2017/18	2018/19 Oct	2018/19 Nov
<b>TY Exports</b>						
Argentina	954	772	457	550	500	500
Australia	1,701	717	542	300	1,500	1,500
Ethiopia	75	75	75	75	75	75
India	122	74	24	50	50	50
Kenya	73	41	73	160	50	50
Nigeria	100	50	100	100	100	100
Ukraine	156	120	164	150	80	80
Others	138	115	229	213	102	102
<b>Subtotal</b>	3,319	1,964	1,664	1,598	2,457	2,457
<b>United States</b>	9,269	7,928	6,022	4,961	4,000	3,000
<b>World Total</b>	12,588	9,892	7,686	6,559	6,457	5,457
<b>TY Imports</b>						
Chile	98	134	54	60	100	100
China	10,162	8,284	5,209	4,436	2,000	2,000
European Union	131	119	194	420	800	800
Japan	903	649	561	594	600	600
Kenya	117	54	146	150	150	150
Korea, South	6	4	5	70	70	70
Mexico	29	661	548	120	1,500	500
Somalia	20	70	60	70	100	100
South Sudan	87	19	36	150	150	150
Sudan	120	200	120	150	200	200
Others	390	669	398	601	504	504
<b>Subtotal</b>	12,063	10,863	7,331	6,821	6,174	5,174
<b>Unaccounted</b>	498	-1,069	311	-313	283	283
<b>United States</b>	27	98	44	51	0	0
<b>World Total</b>	12,588	9,892	7,686	6,559	6,457	5,457

TY=Trade Year, see Endnotes.

**World Sorghum Production, Consumption, and Stocks**  
**Local Marketing Years, Thousand Metric Tons**

	2014/15	2015/16	2016/17	2017/18	2018/19 Oct	2018/19 Nov
<b>Production</b>						
Argentina	3,500	3,375	3,400	3,000	3,150	3,150
Australia	2,209	1,791	994	1,439	1,950	2,200
Brazil	2,055	1,032	1,865	1,870	1,863	1,863
Burkina	1,708	1,436	1,663	1,366	1,800	1,800
Cameroon	1,150	1,217	1,339	1,400	1,400	1,400
Chad	922	835	991	946	950	950
China	2,885	2,750	2,985	3,200	3,450	3,450
Ethiopia	4,339	4,766	4,752	4,050	4,100	4,100
India	5,445	4,238	4,570	4,950	4,600	4,600
Mali	1,272	1,527	1,394	1,705	1,300	1,300
Mexico	6,270	5,587	4,638	4,545	4,600	4,400
Niger	1,426	1,918	1,808	1,944	1,700	1,700
Nigeria	6,883	7,005	6,939	6,300	6,800	6,800
Sudan	6,281	2,744	6,466	3,743	4,000	4,000
Tanzania	883	677	756	800	800	800
Others	7,948	7,309	6,614	7,052	7,047	7,026
<b>Subtotal</b>	55,176	48,207	51,174	48,310	49,510	49,539
<b>United States</b>	10,988	15,158	12,199	9,242	9,701	9,238
<b>World Total</b>	66,164	63,365	63,373	57,552	59,211	58,777
<b>Total Consumption</b>						
Argentina	2,800	2,900	2,900	2,700	2,700	2,700
Brazil	2,000	1,150	1,700	1,900	1,900	1,900
Burkina	1,700	1,465	1,640	1,400	1,700	1,700
Cameroon	1,175	1,232	1,369	1,410	1,425	1,425
Chad	930	850	950	1,000	980	980
China	12,900	11,000	8,300	7,800	5,500	5,500
Ethiopia	4,100	4,700	4,700	4,200	4,100	4,100
European Union	995	800	790	970	1,470	1,520
India	5,100	4,600	4,500	4,700	4,600	4,600
Mali	1,200	1,500	1,400	1,650	1,400	1,400
Mexico	6,600	6,300	5,300	4,700	5,900	4,900
Niger	1,450	2,000	2,000	1,850	1,800	1,800
Nigeria	6,833	6,905	6,850	6,250	6,700	6,700
South Sudan	1,050	830	760	800	850	850
Sudan	6,000	3,100	6,450	4,100	4,250	4,250
Others	8,800	8,695	7,606	8,452	8,346	8,411
<b>Subtotal</b>	63,453	57,692	57,518	54,112	53,614	52,459
<b>United States</b>	2,459	6,130	6,282	4,047	5,842	6,604
<b>World Total</b>	65,912	63,822	63,800	58,159	59,456	59,063
<b>Ending Stocks</b>						
Argentina	971	952	889	689	639	639
Australia	252	233	272	261	111	261
Burkina	113	79	97	58	153	153
China	706	717	577	370	267	300
Ethiopia	561	576	569	364	309	309
India	587	151	198	368	318	318
Sudan	743	582	568	261	206	206
Others	1,840	1,564	1,337	1,494	1,535	1,299
<b>Subtotal</b>	5,773	4,854	4,507	3,865	3,538	3,485
<b>United States</b>	468	930	850	885	934	979
<b>World Total</b>	6,241	5,784	5,357	4,750	4,472	4,464

## Regional Sorghum Imports, Production, Consumption, and Stocks

Thousand Metric Tons

	2014/15	2015/16	2016/17	2017/18	Oct 2018/19	Nov 2018/19
<b>TY Imports</b>						
North America	56	759	592	171	1,500	500
South America	114	212	60	130	185	185
European Union - 28	131	119	194	420	800	800
Other Europe	0	0	0	0	0	0
Middle East	24	34	30	132	31	31
North Africa	1	1	5	1	0	0
Sub-Saharan Africa	576	578	646	763	903	903
East Asia	11,142	9,011	5,823	5,160	2,720	2,720
Southeast Asia	14	16	19	20	10	10
Others	32	231	6	75	25	25
<b>Total</b>	<b>12,090</b>	<b>10,961</b>	<b>7,375</b>	<b>6,872</b>	<b>6,174</b>	<b>5,174</b>
<b>Production</b>						
North America	17,258	20,745	16,837	13,787	14,301	13,638
Central America	326	337	326	325	327	327
Caribbean	125	123	118	91	106	106
South America	6,967	5,682	6,159	5,878	6,100	6,065
European Union - 28	887	674	632	671	678	692
Middle East	646	505	394	485	470	470
North Africa	809	752	755	755	755	755
Sub-Saharan Africa	28,211	25,359	29,127	25,606	26,152	26,152
East Asia	2,887	2,752	2,987	3,202	3,452	3,452
South Asia	5,560	4,399	4,719	5,080	4,740	4,740
Southeast Asia	55	55	50	50	50	50
Oceania	2,209	1,791	994	1,439	1,950	2,200
Others	224	191	275	183	130	130
<b>Total</b>	<b>66,164</b>	<b>63,365</b>	<b>63,373</b>	<b>57,552</b>	<b>59,211</b>	<b>58,777</b>
<b>Domestic Consumption</b>						
North America	9,059	12,430	11,582	8,747	11,742	11,504
Central America	321	345	326	325	330	330
Caribbean	125	123	120	91	106	106
South America	6,362	5,409	5,623	5,716	5,797	5,762
European Union - 28	995	800	790	970	1,470	1,520
Middle East	801	550	429	622	491	491
North Africa	785	752	755	755	755	755
Sub-Saharan Africa	27,840	25,988	29,444	26,363	26,975	26,975
East Asia	13,882	11,733	8,917	8,526	6,222	6,222
South Asia	5,247	4,981	4,665	4,893	4,765	4,765
Southeast Asia	95	66	71	66	55	55
Oceania	505	905	675	800	700	800
Others	75	75	100	55	55	55
<b>Total</b>	<b>66,092</b>	<b>64,157</b>	<b>63,497</b>	<b>57,929</b>	<b>59,463</b>	<b>59,340</b>
<b>Ending Stocks</b>						
North America	806	1,216	1,022	1,022	1,271	1,116
Central America	26	17	17	12	9	9
South America	1,310	1,128	1,147	905	848	848
European Union - 28	27	16	24	143	149	113
Middle East	39	33	25	20	30	30
North Africa	47	48	53	54	54	54
Sub-Saharan Africa	2,313	2,105	1,911	1,506	1,331	1,331
East Asia	765	772	629	422	319	352
South Asia	587	151	198	368	318	318
Oceania	252	233	272	261	111	261
Others	69	65	59	37	32	32
<b>Total</b>	<b>6,241</b>	<b>5,784</b>	<b>5,357</b>	<b>4,750</b>	<b>4,472</b>	<b>4,464</b>

NOTES: Regional definitions appear on last page of this circular. Imports are reported on a trade year basis. All other data are reported using local marketing years.

**World Oats Trade**  
**October/September Year, Thousand Metric Tons**

	2014/15	2015/16	2016/17	2017/18	2018/19 Oct	2018/19 Nov
<b>TY Exports</b>						
Australia	264	214	455	550	400	400
Canada	1,734	1,667	1,557	1,685	1,600	1,600
Chile	84	26	27	35	30	30
European Union	231	220	179	180	350	350
Kazakhstan	0	5	12	10	10	10
Russia	14	16	14	30	10	10
Ukraine	46	48	19	15	50	50
Others	10	8	3	10	10	10
<b>Subtotal</b>	2,383	2,204	2,266	2,515	2,460	2,460
<b>United States</b>	25	37	44	31	30	30
<b>World Total</b>	2,408	2,241	2,310	2,546	2,490	2,490
<b>TY Imports</b>						
Algeria	24	31	11	7	25	25
Bosnia and Herzegovina	4	4	6	5	5	5
Canada	22	17	18	12	10	10
China	162	172	278	500	400	400
Colombia	2	1	1	5	5	5
Ecuador	21	38	21	35	30	30
European Union	4	9	3	4	5	5
India	24	31	25	25	25	25
Japan	47	50	49	45	50	50
Korea, South	29	21	23	40	25	25
Mexico	86	77	119	130	100	100
Norway	4	7	3	15	5	5
Serbia	2	1	0	5	5	5
South Africa	46	31	24	25	20	20
Switzerland	49	41	54	50	50	50
Others	15	13	24	18	17	17
<b>Subtotal</b>	541	544	659	921	777	777
<b>Unaccounted</b>	100	165	121	91	113	113
<b>United States</b>	1,767	1,532	1,530	1,534	1,600	1,600
<b>World Total</b>	2,408	2,241	2,310	2,546	2,490	2,490

TY=Trade Year, see Endnotes.

**World Oats Production, Consumption, and Stocks**  
**Local Marketing Years, Thousand Metric Tons**

	2014/15	2015/16	2016/17	2017/18	2018/19 Oct	2018/19 Nov
<b>Production</b>						
Algeria	110	110	110	110	110	110
Argentina	525	553	785	492	600	600
Australia	1,198	1,300	2,266	1,120	1,100	1,050
Belarus	522	492	390	500	460	460
Brazil	307	351	828	634	770	770
Canada	2,977	3,425	3,231	3,733	3,450	3,450
Chile	421	533	713	571	675	675
China	255	265	290	300	305	305
European Union	7,821	7,524	8,044	8,072	8,300	8,050
Kazakhstan	226	244	335	285	340	340
Mexico	93	85	72	72	90	90
Norway	283	286	330	300	300	300
Russia	5,267	4,527	4,750	5,441	4,800	4,800
Turkey	210	250	225	250	230	230
Ukraine	610	498	510	481	475	475
Others	260	303	355	328	335	335
<b>Subtotal</b>	<b>21,085</b>	<b>20,746</b>	<b>23,234</b>	<b>22,689</b>	<b>22,340</b>	<b>22,040</b>
<b>United States</b>	<b>1,019</b>	<b>1,300</b>	<b>940</b>	<b>717</b>	<b>815</b>	<b>815</b>
<b>World Total</b>	<b>22,104</b>	<b>22,046</b>	<b>24,174</b>	<b>23,406</b>	<b>23,155</b>	<b>22,855</b>
<b>Total Consumption</b>						
Algeria	126	141	132	117	135	135
Argentina	525	550	760	525	550	550
Australia	950	1,025	1,500	850	700	700
Belarus	500	500	400	500	450	450
Brazil	305	345	775	675	725	725
Canada	1,682	1,620	1,854	2,035	1,900	1,900
Chile	355	495	655	575	655	655
China	400	420	560	780	730	730
European Union	7,730	7,400	7,950	7,900	7,950	7,650
Kazakhstan	225	245	274	275	330	330
Mexico	175	190	195	200	190	190
Norway	295	296	315	320	300	300
Russia	5,200	4,600	4,800	5,400	4,800	4,800
Turkey	225	240	240	240	240	240
Ukraine	600	450	450	480	450	450
Others	488	519	555	577	554	554
<b>Subtotal</b>	<b>19,724</b>	<b>19,125</b>	<b>21,576</b>	<b>21,469</b>	<b>20,734</b>	<b>20,434</b>
<b>United States</b>	<b>2,447</b>	<b>2,702</b>	<b>2,539</b>	<b>2,358</b>	<b>2,493</b>	<b>2,493</b>
<b>World Total</b>	<b>22,171</b>	<b>21,827</b>	<b>24,115</b>	<b>23,827</b>	<b>23,227</b>	<b>22,927</b>
<b>Ending Stocks</b>						
Argentina	65	65	89	51	96	96
Australia	93	143	448	168	168	118
Brazil	10	16	68	23	63	63
Canada	693	947	703	784	744	744
European Union	770	690	637	629	674	684
Kazakhstan	33	27	75	75	75	75
Russia	289	199	147	163	158	158
Others	223	264	336	325	278	278
<b>Subtotal</b>	<b>2,176</b>	<b>2,351</b>	<b>2,503</b>	<b>2,218</b>	<b>2,256</b>	<b>2,216</b>
<b>United States</b>	<b>780</b>	<b>824</b>	<b>731</b>	<b>595</b>	<b>525</b>	<b>525</b>
<b>World Total</b>	<b>2,956</b>	<b>3,175</b>	<b>3,234</b>	<b>2,813</b>	<b>2,781</b>	<b>2,741</b>

## Regional Oats Imports, Production, Consumption, and Stocks

Thousand Metric Tons

	2014/15	2015/16	2016/17	2017/18	Oct 2018/19	Nov 2018/19
<b>TY Imports</b>						
North America	1,875	1,626	1,667	1,676	1,710	1,710
South America	30	48	31	46	40	40
European Union - 28	4	9	3	4	5	5
Other Europe	62	53	63	75	65	65
Former Soviet Union - 12	1	4	11	5	5	5
Middle East	4	0	0	5	5	5
North Africa	24	31	15	9	27	27
Sub-Saharan Africa	46	31	24	25	20	20
East Asia	238	243	350	585	475	475
South Asia	24	31	25	25	25	25
Oceania	0	0	0	0	0	0
<b>Total</b>	<b>2,308</b>	<b>2,076</b>	<b>2,189</b>	<b>2,455</b>	<b>2,377</b>	<b>2,377</b>
<b>Production</b>						
North America	4,089	4,810	4,243	4,522	4,355	4,355
South America	1,281	1,478	2,372	1,740	2,088	2,088
European Union - 28	7,821	7,524	8,044	8,072	8,300	8,050
Other Europe	411	418	468	424	435	435
Former Soviet Union - 12	6,631	5,767	5,991	6,713	6,081	6,081
Middle East	210	250	225	250	230	230
North Africa	147	166	175	175	173	173
Sub-Saharan Africa	24	38	56	55	55	55
East Asia	257	266	291	301	306	306
South Asia	0	0	0	0	0	0
Oceania	1,233	1,329	2,309	1,154	1,132	1,082
<b>Total</b>	<b>22,104</b>	<b>22,046</b>	<b>24,174</b>	<b>23,406</b>	<b>23,155</b>	<b>22,855</b>
<b>Domestic Consumption</b>						
North America	4,304	4,512	4,588	4,593	4,583	4,583
South America	1,245	1,455	2,269	1,869	2,013	2,013
European Union - 28	7,730	7,400	7,950	7,900	7,950	7,650
Other Europe	479	485	510	507	491	491
Former Soviet Union - 12	6,531	5,801	5,930	6,661	6,036	6,036
Middle East	225	240	240	240	240	240
North Africa	163	197	201	182	200	200
Sub-Saharan Africa	63	72	67	80	75	75
East Asia	479	491	634	865	809	809
South Asia	24	31	25	25	25	25
Oceania	985	1,054	1,540	885	730	730
<b>Total</b>	<b>22,228</b>	<b>21,738</b>	<b>23,954</b>	<b>23,807</b>	<b>23,152</b>	<b>22,852</b>
<b>Ending Stocks</b>						
North America	1,479	1,775	1,438	1,384	1,274	1,274
South America	102	140	240	123	198	198
European Union - 28	770	690	637	629	674	684
Other Europe	46	35	53	46	55	55
Former Soviet Union - 12	397	298	316	324	304	304
Middle East	11	21	6	21	16	16
North Africa	1	1	1	3	3	3
Sub-Saharan Africa	18	15	28	28	28	28
East Asia	39	57	64	85	57	57
South Asia	0	0	0	0	0	0
Oceania	93	143	451	170	172	122
<b>Total</b>	<b>2,956</b>	<b>3,175</b>	<b>3,234</b>	<b>2,813</b>	<b>2,781</b>	<b>2,741</b>

NOTES: Regional definitions appear on last page of this circular. Imports are reported on a trade year basis. All other data are reported using local marketing years.

**World Rye Trade**  
**October/September Year, Thousand Metric Tons**

	2014/15	2015/16	2016/17	2017/18	2018/19 Oct	2018/19 Nov
<b>TY Exports</b>						
Belarus	0	24	8	0	20	20
Canada	89	112	132	227	170	170
European Union	167	160	139	90	100	100
Russia	121	23	29	70	30	30
Ukraine	13	21	14	38	30	30
Others	1	0	0	0	0	0
<b>Subtotal</b>	391	340	322	425	350	350
<b>United States</b>	3	6	4	4	5	5
<b>World Total</b>	394	346	326	429	355	355
<b>TY Imports</b>						
European Union	96	39	16	65	50	50
Israel	18	12	4	15	15	15
Japan	22	16	24	21	20	20
Korea, South	4	5	4	3	5	5
Norway	6	2	4	5	10	10
Russia	5	8	4	5	25	25
Switzerland	6	4	3	2	5	5
Others	6	16	4	17	0	0
<b>Subtotal</b>	163	102	63	133	130	130
<b>Unaccounted</b>	-31	27	91	-29	25	25
<b>United States</b>	262	217	172	325	200	200
<b>World Total</b>	394	346	326	429	355	355

TY=Trade Year, see Endnotes.

**World Rye Production, Consumption, and Stocks**  
**Local Marketing Years, Thousand Metric Tons**

	2014/15	2015/16	2016/17	2017/18	2018/19 Oct	2018/19 Nov
<b>Production</b>						
Argentina	97	61	79	86	95	95
Belarus	867	753	651	670	650	650
Canada	218	226	436	320	300	300
European Union	8,864	7,833	7,440	7,411	6,500	6,600
Russia	3,279	2,084	2,538	2,544	1,850	1,850
Turkey	300	330	300	320	320	320
Ukraine	475	394	394	510	400	400
Others	176	178	148	164	150	150
<b>Subtotal</b>	<b>14,276</b>	<b>11,859</b>	<b>11,986</b>	<b>12,025</b>	<b>10,265</b>	<b>10,365</b>
<b>United States</b>	<b>183</b>	<b>295</b>	<b>342</b>	<b>246</b>	<b>214</b>	<b>214</b>
<b>World Total</b>	<b>14,459</b>	<b>12,154</b>	<b>12,328</b>	<b>12,271</b>	<b>10,479</b>	<b>10,579</b>
<b>Total Consumption</b>						
Argentina	97	61	79	86	95	95
Australia	19	22	25	26	26	26
Belarus	850	800	700	665	650	650
Canada	134	119	180	189	160	160
European Union	8,600	7,900	7,600	7,700	6,500	6,500
Kazakhstan	65	37	33	35	35	35
Norway	46	67	23	46	52	52
Russia	3,250	2,150	2,400	2,500	2,000	2,000
Turkey	325	330	300	320	320	320
Ukraine	475	420	380	480	390	390
Others	108	91	99	99	102	102
<b>Subtotal</b>	<b>13,974</b>	<b>12,015</b>	<b>11,845</b>	<b>12,179</b>	<b>10,351</b>	<b>10,301</b>
<b>United States</b>	<b>406</b>	<b>515</b>	<b>499</b>	<b>470</b>	<b>415</b>	<b>464</b>
<b>World Total</b>	<b>14,380</b>	<b>12,530</b>	<b>12,344</b>	<b>12,649</b>	<b>10,766</b>	<b>10,765</b>
<b>Ending Stocks</b>						
Belarus	166	99	41	61	41	41
Canada	42	51	165	104	74	74
European Union	1,386	1,209	989	680	642	730
Kazakhstan	4	4	12	16	6	6
Russia	264	158	291	270	115	115
Turkey	14	14	14	14	14	14
Ukraine	106	75	77	69	49	49
Others	3	2	1	1	0	1
<b>Subtotal</b>	<b>1,985</b>	<b>1,612</b>	<b>1,590</b>	<b>1,215</b>	<b>941</b>	<b>1,030</b>
<b>United States</b>	<b>15</b>	<b>12</b>	<b>18</b>	<b>15</b>	<b>13</b>	<b>14</b>
<b>World Total</b>	<b>2,000</b>	<b>1,624</b>	<b>1,608</b>	<b>1,230</b>	<b>954</b>	<b>1,044</b>



## Regional Rye Imports, Production, Consumption, and Stocks

Thousand Metric Tons

	2014/15	2015/16	2016/17	2017/18	Oct 2018/19	Nov 2018/19
<b>TY Imports</b>						
North America	262	217	172	327	200	200
South America	0	0	0	0	0	0
European Union - 28	96	39	16	65	50	50
Other Europe	12	6	8	7	15	15
Former Soviet Union - 12	5	24	7	20	25	25
Middle East	24	12	4	15	15	15
Sub-Saharan Africa	0	0	0	0	0	0
East Asia	26	21	28	24	25	25
Oceania	0	0	0	0	0	0
<b>Total</b>	<b>425</b>	<b>319</b>	<b>235</b>	<b>458</b>	<b>330</b>	<b>330</b>
<b>Production</b>						
North America	401	521	778	566	514	514
South America	106	69	91	97	107	107
European Union - 28	8,864	7,833	7,440	7,411	6,500	6,600
Other Europe	83	108	67	85	84	84
Former Soviet Union - 12	4,682	3,268	3,624	3,763	2,925	2,925
Middle East	300	330	300	320	320	320
Sub-Saharan Africa	3	3	3	3	3	3
East Asia	0	0	0	0	0	0
Oceania	20	22	25	26	26	26
<b>Total</b>	<b>14,459</b>	<b>12,154</b>	<b>12,328</b>	<b>12,271</b>	<b>10,479</b>	<b>10,579</b>
<b>Domestic Consumption</b>						
North America	540	634	679	659	575	624
South America	106	69	91	97	107	107
European Union - 28	8,600	7,900	7,600	7,700	6,500	6,500
Other Europe	97	113	74	92	99	99
Former Soviet Union - 12	4,640	3,407	3,513	3,680	3,075	3,075
Middle East	343	342	304	335	335	335
Sub-Saharan Africa	3	3	3	3	3	3
East Asia	27	22	29	24	25	25
Oceania	19	22	25	26	26	26
<b>Total</b>	<b>14,375</b>	<b>12,512</b>	<b>12,318</b>	<b>12,616</b>	<b>10,745</b>	<b>10,794</b>
<b>Ending Stocks</b>						
North America	57	63	183	119	87	88
South America	0	0	0	0	0	0
European Union - 28	1,386	1,209	989	680	642	730
Other Europe	0	0	0	0	0	0
Former Soviet Union - 12	540	336	421	416	211	211
Middle East	14	14	14	14	14	14
Sub-Saharan Africa	0	0	0	0	0	0
East Asia	3	2	1	1	0	1
Oceania	0	0	0	0	0	0
<b>Total</b>	<b>2,000</b>	<b>1,624</b>	<b>1,608</b>	<b>1,230</b>	<b>954</b>	<b>1,044</b>

NOTES: Regional definitions appear on last page of this circular. Imports are reported on a trade year basis. All other data are reported using local marketing years.