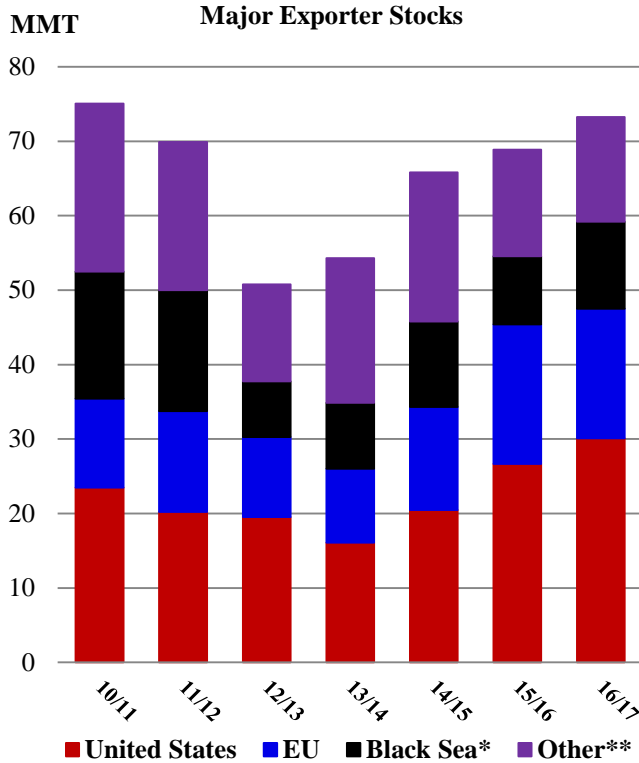




Grain: World Markets and Trade

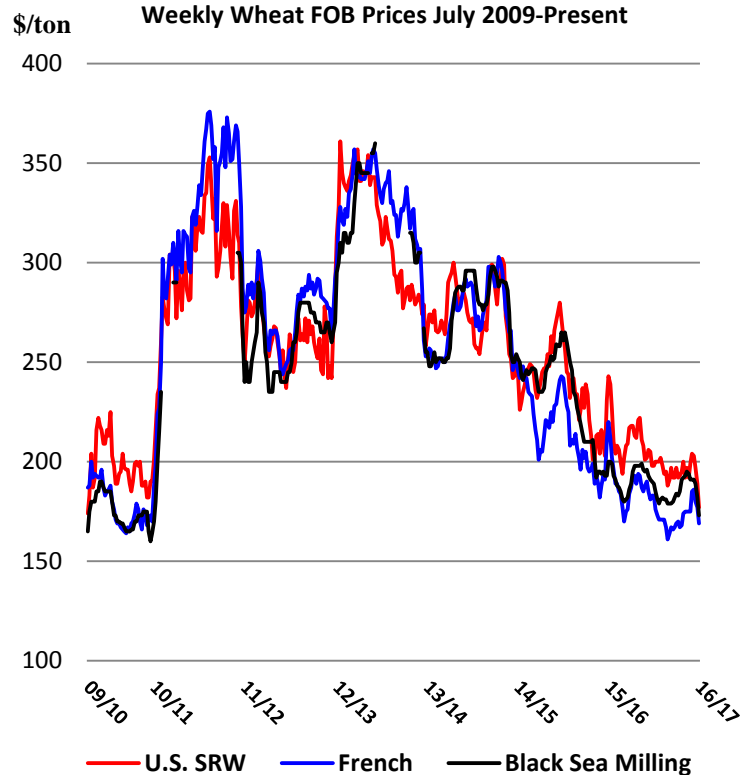
July 2016

Wheat Exporter Stocks Surge to Highest in 6 Years, Pressuring Prices Downward



*Russia, Ukraine

**Argentina, Australia, Canada, Kazakhstan



Global wheat production is projected at a record high, outpacing consumption for the fourth consecutive year. This trend is leading to the highest exporter ending stocks since 2010/11, which is overburdening the market and pressuring prices. Major exporters are Argentina, Australia, Canada, EU, Kazakhstan, Russia, Ukraine, and the United States. These stocks are generally available to the world and thus most influential on price direction. In the United States, stocks are projected at their highest since 1987/88 and account for 41 percent of the exporter total in 2016/17.

Export prices have declined to a 7-year low, reflecting market saturation. In this low-price environment, import demand is expected to strengthen, but primarily benefiting the most competitive origins. Currently, the EU and Black Sea countries are the most competitive in price terms, and they also enjoy freight and logistical advantages to the major growth markets of the Middle East and North Africa.

For email subscription, click here to register: <https://public.govdelivery.com/accounts/USDAFAS/subscriber/new>

TABLE OF CONTENTS

World Markets and Trade: Commentary and Current Data	
Wheat	4
Rice	10
Coarse Grains.....	17
Historical Data Series for Selected Regions and Countries.....	38
Endnotes to Grain: World Markets and Trade.....	57

The Foreign Agricultural Service (FAS) updates its production, supply and distribution (PSD) database for cotton, oilseeds, and grains at 12:00 p.m. on the day the *World Agricultural Supply and Demand Estimates* (WASDE) report is released. This circular is released by 12:15 p.m.

To download the tables in the publication, go to Production, Supply and Distribution Database (PSD Online): (<http://apps.fas.usda.gov/psdonline/psdHome.aspx>), scroll down to Reports, and Click the plus sign [+] next to Grains.

FAS Reports and Databases:

Current *World Markets and Trade* and *World Agricultural Production* Reports:

<http://apps.fas.usda.gov/psdonline/psdDataPublications.aspx>

Archives *World Markets and Trade* and *World Agricultural Production* Reports:

<http://usda.mannlib.cornell.edu/MannUsda/viewTaxonomy.do?taxonomyID=7>

Production, Supply and Distribution Database (PSD Online):

<http://apps.fas.usda.gov/psdonline/psdHome.aspx>

Global Agricultural Trade System (U.S. Exports and Imports):

<http://apps.fas.usda.gov/gats/default.aspx>

Export Sales Report:

<http://apps.fas.usda.gov/esrquery/>

Global Agricultural Information Network (Agricultural Attaché Reports):

<http://gain.fas.usda.gov/Pages/Default.aspx>

Other USDA Reports:

World Agricultural Supply and Demand Estimates (WASDE):

<http://www.usda.gov/oce/commodity/wasde/>

Economic Research Service:

<http://www.ers.usda.gov/topics/crops>

National Agricultural Statistics Service:

<http://www.nass.usda.gov/Publications/>

All Grain Summary Comparison
Million Metric Tons

Marketing Year	Wheat			Rice, Milled			Corn			
	2014/15	2015/16	2016/17	2014/15	2015/16	2016/17	2014/15	2015/16	2016/17	
Production										
United States	(Jun-May)	55.1	55.8	61.5	7.1	6.1	7.8	361.1	345.5	369.3
Other		672.8	678.8	677.0	471.6	464.5	473.4	652.5	614.3	641.4
World Total		727.9	734.6	738.5	478.7	470.6	481.2	1,013.6	959.8	1,010.7
Domestic Consumption										
United States	(Jun-May)	31.6	31.6	36.3	4.2	3.9	4.4	301.9	299.5	308.6
Other		667.7	673.8	688.8	471.1	472.3	473.9	662.1	677.1	693.8
World Total		699.3	705.4	725.1	475.3	476.2	478.3	964.0	976.6	1,002.4
Ending Stocks										
United States	(Jun-May)	20.5	26.7	30.1	1.6	1.3	1.8	44.0	43.2	52.9
Other		196.9	217.8	223.6	112.9	105.4	105.5	164.5	163.7	155.5
World Total		217.4	244.5	253.7	114.5	106.7	107.3	208.5	206.9	208.4
TY Imports										
United States	(Jun-May)	4.0	3.1	3.3	0.8	0.8	0.8	0.8	1.5	1.0
Other		154.4	163.6	161.5	38.7	37.9	37.3	124.7	131.4	127.6
World Total		158.4	166.7	164.8	39.5	38.7	38.1	125.5	132.9	128.6
TY Exports										
United States	(Jun-May)	22.8	21.8	25.0	3.5	3.5	3.7	46.8	48.5	52.0
Other		138.7	147.6	142.7	39.3	37.8	36.8	81.2	87.4	79.5
World Total		161.5	169.4	167.7	42.8	41.3	40.5	128.0	135.9	131.5

Note: Consumption in this table has not been adjusted for differences in marketing year imports and exports and therefore differs from global totals shown elsewhere. Marketing years for U.S. grains are: Wheat (Jun-May), Rice (Aug-Jul), Corn (Sep-Aug). 'Marketing Year' column is germane for U.S. wheat only.

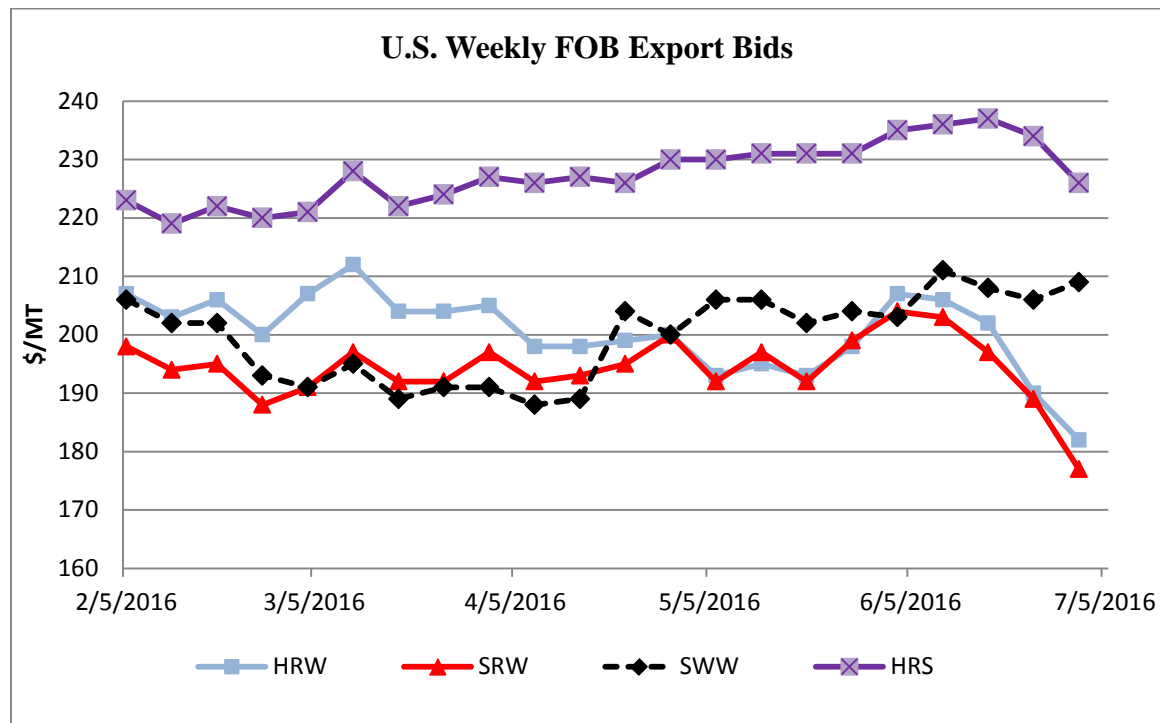
WHEAT: WORLD MARKETS AND TRADE

OVERVIEW

Global production in 2016/17 is raised to a new record. Larger crops are projected in Argentina, Australia, Canada, Russia, Serbia, Ukraine, and the United States, while cuts in Algeria and EU crops are partially offsetting. Global trade is up month-to-month, but still slightly below last year's record. The uptick is primarily driven by larger projected imports in Algeria, Bangladesh, China, South Korea, and Turkey. Morocco and the United States are cut due to larger domestic crops. Greater exports for Argentina, Australia, Russia, Turkey, and Ukraine are partly offset by a cut in the EU. The U.S. season-average farm price is lowered \$0.20 per bushel to \$3.80.

For 2015/16, global trade is revised up to a new record. Imports for Bangladesh, China, Indonesia, and Thailand are all higher, while cuts in Syria and the United States are partly offsetting. U.S. exports are raised, along with Russia and Ukraine. Argentina and Canada are lowered.

U.S. PRICES:



Domestic: Wheat prices, except soft white wheat (SWW), plunged in June resulting from domestic harvest pressure and large global supplies. Harvesting of the Hard Red Winter (HRW) wheat crop is nearing completion with record yields reported. HRW prices plunged \$25 to \$182/ton, the lowest price in 6 years. Soft Red Winter (SRW) prices dropped \$27 to \$177/ton, the lowest in nearly 7 years. Hard Red Spring (HRS) dipped \$9/ton to \$226. Soft White Winter (SWW) rose \$6/ton to \$203.

TRADE CHANGES IN 2016/17

Selected Exporters

- **Argentina** is up 500,000 tons to 9.0 million on a larger crop.
- **Australia** is boosted 500,000 tons to 17.5 million on a larger crop.
- **EU** is slashed 1.5 million tons to 34.0 million as a result of a smaller crop. Domestic feed use is raised.
- **Russia** is raised 500,000 tons to a record 25.5 million based on a record crop.
- **Turkey** is boosted 500,000 tons to 5.5 million as the strong pace of shipments of flour and pasta products is expected to continue.
- **Ukraine** is hiked 1.0 million tons to 12.5 million on a larger crop and strong demand for feed-quality wheat.
- **United States** is raised 500,000 tons to 25.0 million based on a larger crop and more competitive prices.

Selected Importers

- **Algeria** is boosted 500,000 tons to 8.0 million as the result of a smaller crop.
- **Bangladesh** is up 300,000 tons to 4.7 million as the low price of wheat is likely to spur large purchases.
- **China** is raised 300,000 tons to 3.5 million resulting from quality concerns with the current crop.
- **South Korea** is boosted 700,000 tons to 5.0 million as low-priced wheat will encourage larger purchases in feed use.
- **Morocco** is cut 500,000 tons to 5.0 million because of large carry-in supplies and a slightly larger crop.
- **Turkey** is raised 300,000 tons to 4.8 million resulting from increased demand for flour and product exports. Turkey's inward processing regime allows duty-free imports provided that it is exported as a processed product.
- **United States** is cut 150,000 tons to 3.25 million as a result of a larger crop.

TRADE CHANGES IN 2015/16

Selected Exporters- based on trade data

- **Canada** is lowered 300,000 tons to 22.2 million.
- **Russia** is raised 500,000 tons to 25.0 million.
- **Ukraine** is boosted 1.2 million tons to 17.0 million.
- **United States** is up 550,000 tons to 21.7 million.

Selected Importers- based on trade data

- **Bangladesh** is raised 400,000 tons to 4.6 million.
- **China** is up 300,000 tons to 3.3 million.
- **Indonesia** is boosted 500,000 tons to 9.6 million.
- **Thailand** is raised 300,000 tons to 4.8 million.
- **United States** is lowered 100,000 tons to 3.1 million.

World Wheat, Flour, and Products Trade
July/June Year, Thousand Metric Tons

	2012/13	2013/14	2014/15	2015/16	2016/17 Jun	2016/17 Jul
TY Exports						
Argentina	7,450	1,675	4,200	8,600	8,500	9,000
Australia	21,269	18,339	16,575	16,200	17,000	17,500
Brazil	1,753	81	1,688	1,100	1,000	1,000
Canada	18,584	22,156	24,877	22,200	20,000	20,000
European Union	22,786	32,032	35,418	33,000	35,500	34,000
Kazakhstan	6,801	8,000	5,507	7,500	7,000	7,000
Mexico	729	1,322	1,104	1,300	1,200	1,300
Russia	11,308	18,609	22,800	25,000	25,000	25,500
Turkey	3,583	4,293	4,134	5,600	5,000	5,500
Ukraine	7,190	9,755	11,269	17,000	11,500	12,500
Others	18,067	14,673	11,206	10,127	9,247	9,352
Subtotal	119,520	130,935	138,778	147,627	140,947	142,652
United States	27,734	31,518	22,752	21,750	24,500	25,000
World Total	147,254	162,453	161,530	169,377	165,447	167,652
TY Imports						
Afghanistan	1,600	2,050	2,000	2,400	2,200	2,400
Algeria	6,484	7,484	7,257	8,100	7,500	8,000
Bangladesh	2,725	3,354	3,915	4,600	4,400	4,700
Brazil	7,547	7,061	5,869	5,950	6,000	6,000
China	2,960	6,773	1,926	3,300	3,200	3,500
Egypt	8,400	10,150	11,100	11,500	12,000	12,000
Ethiopia	1,344	670	1,100	3,100	2,000	2,000
European Union	5,276	3,976	5,975	6,700	5,500	5,500
India	20	22	273	400	2,000	2,000
Indonesia	7,146	7,391	7,478	9,600	9,100	9,100
Iraq	3,948	3,246	2,253	2,300	2,200	2,300
Japan	6,598	6,123	5,878	5,700	5,700	5,800
Korea, South	5,439	4,288	3,942	4,400	4,300	5,000
Mexico	3,823	4,639	4,476	4,700	4,400	4,200
Morocco	3,825	3,928	4,086	4,700	5,500	5,000
Nigeria	4,168	4,580	4,244	4,300	4,100	4,300
Peru	1,683	2,114	1,907	1,700	1,900	1,900
Philippines	3,620	3,476	5,055	4,500	4,800	4,800
Saudi Arabia	1,921	3,429	3,487	3,000	3,500	3,500
Sudan	1,793	2,664	2,632	2,300	2,100	2,300
Thailand	1,840	1,684	3,488	4,800	3,600	3,800
Turkey	3,312	4,149	5,960	4,300	4,500	4,800
Uzbekistan	1,863	2,224	2,230	2,650	2,500	2,500
Vietnam	1,671	2,157	2,296	3,000	2,700	2,700
Yemen	3,207	3,425	3,245	3,300	3,350	3,350
Others	49,107	54,522	52,386	52,261	50,171	50,081
Subtotal	141,320	155,579	154,458	163,561	159,221	161,531
Unaccounted	2,458	2,089	3,085	2,716	2,826	2,871
United States	3,476	4,785	3,987	3,100	3,400	3,250
World Total	147,254	162,453	161,530	169,377	165,447	167,652

TY=Trade Year, see Endnotes.

World Wheat Production, Consumption, and Stocks
Local Marketing Years, Thousand Metric Tons

	2012/13	2013/14	2014/15	2015/16	2016/17 Jun	2016/17 Jul
Production						
Argentina	9,300	10,500	14,000	11,300	14,500	15,000
Australia	22,856	25,303	23,910	24,500	25,000	25,500
Brazil	4,380	5,300	6,000	5,540	5,300	5,300
Canada	27,205	37,530	29,420	27,600	28,500	29,000
China	121,023	121,930	126,208	130,190	130,000	130,000
Egypt	8,500	8,250	8,300	8,100	8,100	8,100
European Union	133,949	144,583	156,828	160,006	157,500	156,500
India	94,882	93,506	95,850	86,530	88,000	88,000
Iran	13,800	14,500	13,000	15,000	15,500	15,500
Kazakhstan	9,841	13,941	12,996	13,748	13,000	13,000
Pakistan	23,473	24,211	25,979	25,100	25,300	25,300
Russia	37,720	52,091	59,080	61,044	64,000	65,000
Turkey	16,000	18,750	15,250	19,500	17,500	17,500
Ukraine	15,761	22,278	24,750	27,274	24,000	25,000
Uzbekistan	6,700	6,800	7,150	7,200	7,200	7,200
Others	51,595	57,388	53,982	56,146	50,896	51,081
Subtotal	596,985	656,861	672,703	678,778	674,296	676,981
United States	61,298	58,105	55,147	55,840	56,531	61,532
World Total	658,283	714,966	727,850	734,618	730,827	738,513
Total Consumption						
Algeria	9,450	9,850	10,050	10,250	10,450	10,450
Brazil	10,900	11,400	10,700	10,200	10,100	10,100
Canada	9,555	9,414	9,077	8,600	8,800	8,800
China	125,000	116,500	116,500	112,000	110,500	117,000
Egypt	18,700	18,500	19,100	19,200	19,700	19,700
European Union	119,250	117,300	123,500	128,800	127,800	129,300
India	83,824	93,848	93,122	88,641	93,100	93,100
Indonesia	6,950	7,165	7,365	8,650	8,800	9,000
Iran	16,000	17,000	17,500	18,000	18,500	18,500
Morocco	8,300	9,000	9,000	9,800	9,600	9,600
Pakistan	23,900	24,100	24,500	24,400	24,500	24,500
Russia	33,550	34,100	35,500	37,000	37,500	37,500
Turkey	17,650	17,750	17,500	18,000	17,800	17,800
Ukraine	11,400	11,500	12,000	12,500	12,500	12,500
Uzbekistan	8,000	8,400	8,900	9,350	9,500	9,500
Others	146,702	150,279	153,454	158,469	159,747	161,505
Subtotal	641,284	663,595	673,074	675,908	682,465	693,084
United States	37,768	34,287	31,554	31,587	33,530	36,252
World Total	679,052	697,882	704,628	707,495	715,995	729,336
Ending Stocks						
Australia	4,663	4,558	4,837	5,862	5,618	6,552
China	53,960	65,274	76,105	96,795	117,995	112,495
European Union	10,711	9,938	13,823	18,729	18,429	17,429
India	24,200	17,830	17,200	14,500	11,000	11,000
Iran	5,096	7,241	7,846	8,086	5,946	5,886
Morocco	2,674	4,321	4,269	7,069	5,319	5,019
Russia	4,933	5,177	6,285	6,129	8,629	8,629
Others	51,319	63,774	66,558	60,646	56,325	56,611
Subtotal	157,556	178,113	196,923	217,816	229,261	223,621
United States	19,538	16,065	20,477	26,707	28,577	30,079
World Total	177,094	194,178	217,400	244,523	257,838	253,700

Regional Wheat Imports, Production, Consumption, and Stocks

Thousand Metric Tons

	2012/13	2013/14	2014/15	2015/16	Jun 2016/17	Jul 2016/17
TY Imports						
North America	7,784	9,866	8,953	8,285	8,285	7,935
Central America	1,654	1,833	1,834	1,855	1,905	1,930
South America	14,422	14,866	13,132	13,100	13,410	13,410
European Union - 28	5,276	3,976	5,975	6,700	5,500	5,500
Other Europe	1,632	1,858	1,760	1,920	1,785	1,785
Former Soviet Union - 12	7,246	7,506	7,681	7,560	7,470	7,270
Middle East	24,230	28,384	26,912	24,190	23,300	23,700
North Africa	22,047	25,246	25,230	27,600	27,900	27,900
Sub-Saharan Africa	18,585	20,502	20,939	23,380	21,960	22,305
East Asia	17,354	19,465	14,115	15,935	15,520	16,670
South Asia	5,308	6,721	8,149	8,551	9,726	10,251
Southeast Asia	16,294	17,101	20,541	24,325	22,585	22,850
Others	2,964	3,040	3,224	3,260	3,275	3,275
Total	144,796	160,364	158,445	166,661	162,621	164,781
Production						
North America	91,734	99,012	88,254	87,191	89,001	94,502
South America	18,011	19,762	24,222	21,088	23,718	24,218
European Union - 28	133,949	144,583	156,828	160,006	157,500	156,500
Other Europe	3,431	4,103	3,929	4,067	4,015	4,600
Former Soviet Union - 12	77,802	103,885	112,735	117,718	116,830	118,930
Middle East	36,884	41,708	35,414	41,795	39,310	39,310
North Africa	17,328	19,656	17,010	19,910	14,700	14,200
Sub-Saharan Africa	6,716	7,154	7,144	6,371	7,127	7,127
East Asia	122,490	123,248	127,650	131,516	131,360	131,360
South Asia	126,412	125,917	130,154	119,840	121,645	121,645
Oceania	23,345	25,751	24,324	24,925	25,430	25,930
Others	181	187	186	191	191	191
Total	658,283	714,966	727,850	734,618	730,827	738,513
Domestic Consumption						
North America	53,948	50,351	47,481	47,187	49,450	52,172
South America	26,212	27,126	26,780	26,560	26,607	26,615
European Union - 28	119,250	117,300	123,500	128,800	127,800	129,300
Other Europe	4,721	4,807	4,850	4,905	4,980	5,120
Former Soviet Union - 12	71,725	72,750	75,860	77,930	78,965	78,790
Middle East	56,636	58,717	58,112	60,055	60,240	60,140
North Africa	41,290	42,425	42,651	43,525	44,000	44,000
Sub-Saharan Africa	24,047	26,341	26,848	28,174	28,460	28,770
East Asia	140,071	130,201	129,513	125,185	123,750	131,060
South Asia	121,007	132,041	132,322	128,792	133,641	134,166
Southeast Asia	16,515	16,560	19,265	22,105	21,960	22,385
Oceania	8,111	8,280	8,569	8,605	8,850	8,850
Others	3,366	3,494	3,571	3,624	3,724	3,739
Total	686,899	690,393	699,322	705,447	712,427	725,107
Ending Stocks						
North America	24,925	26,790	28,080	31,946	33,151	35,253
South America	3,538	6,834	8,338	4,520	3,760	4,172
European Union - 28	10,711	9,938	13,823	18,729	18,429	17,429
Other Europe	1,057	935	1,101	1,158	1,231	1,348
Former Soviet Union - 12	14,288	15,727	20,084	17,052	19,965	18,832
Middle East	14,049	18,560	18,443	18,478	15,198	14,813
North Africa	11,795	13,802	12,784	16,069	13,729	13,329
Sub-Saharan Africa	2,485	2,923	2,931	3,583	3,035	3,115
East Asia	57,214	68,314	79,228	100,159	121,104	115,789
South Asia	27,995	21,661	23,185	21,040	17,320	17,520
Southeast Asia	3,718	3,466	3,892	5,232	4,622	4,837
Oceania	4,978	4,861	5,123	6,153	5,899	6,833
Others	341	367	388	404	395	430
Total	177,094	194,178	217,400	244,523	257,838	253,700

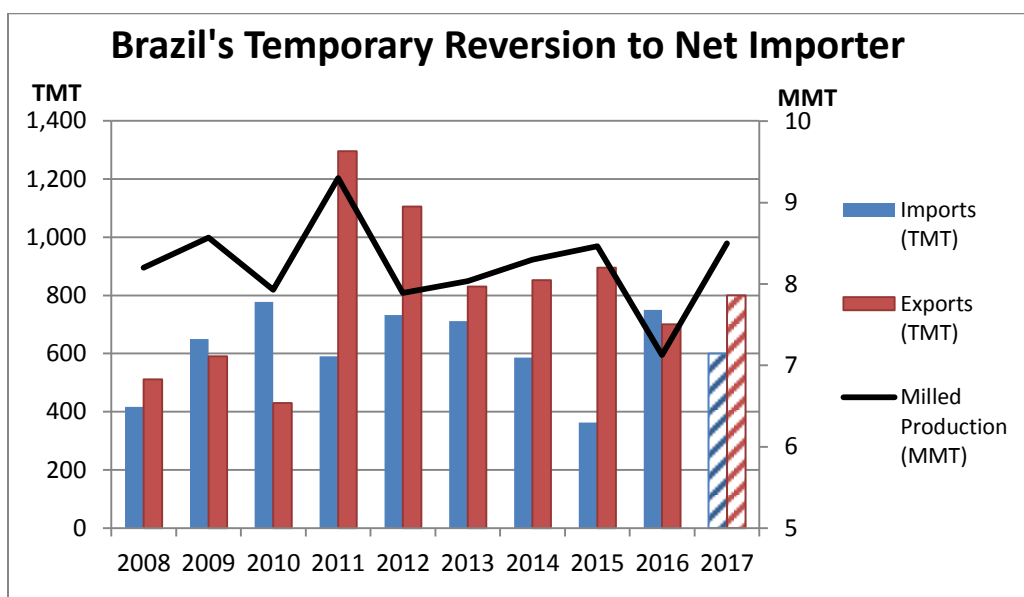
NOTES: Regional definitions appear on last page of this circular. Imports are reported on a trade year basis. All other data are reported using local marketing years.

RICE: WORLD MARKETS AND TRADE

OVERVIEW

For 2016/17, global production is forecast at a new record primarily due to a larger crop in the United States based on the NASS June *Acreage* report. Global trade is forecast lower, with reduced imports and consumption in Bangladesh, Iran, and Nigeria. The U.S. season-average farm price for all rice is lowered \$0.40/cwt to \$11.70/cwt.

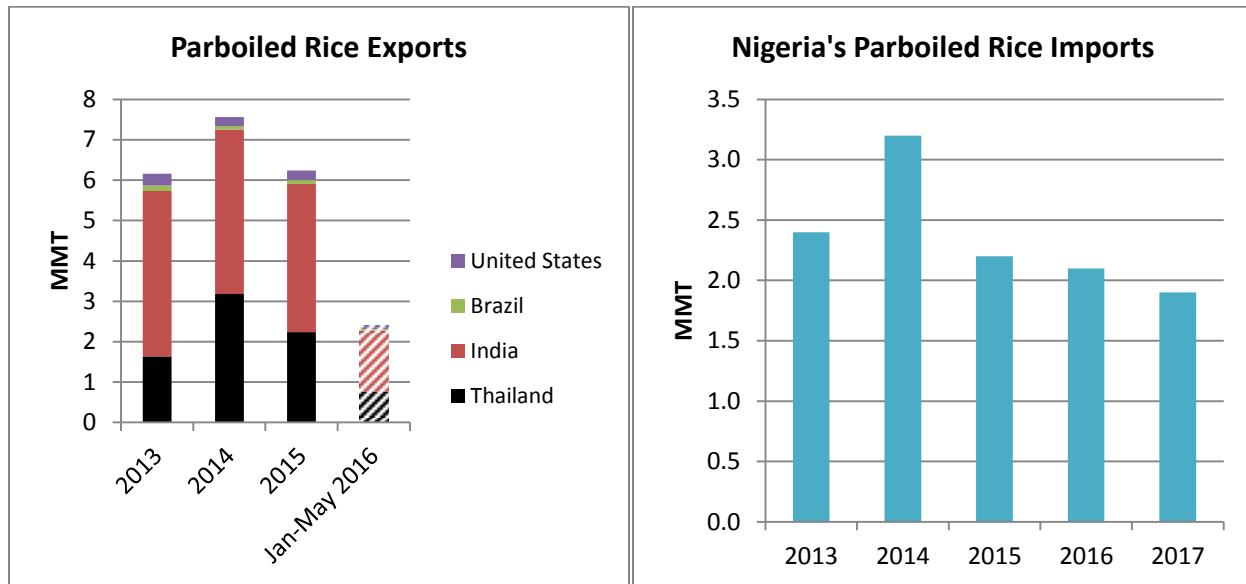
For 2015/16, production is revised lower, primarily on a smaller crop in Brazil. Global trade is down due to cuts to imports for Iran, Nigeria, and Indonesia. Exports are lowered for Brazil and Vietnam. Consumption is also revised down, primarily due to reductions for China. The U.S. season-average farm price remains at \$12.30/cwt.



As the largest producer in Latin America by a wide margin, Brazil has been a net exporter for the majority of the past decade. Reversing the recent trend, it is now projected to become a net importer in 2016 for the first since 2010. At that time, excess rain led to a production decline in Rio Grande do Sul, the largest producing region, precipitating a 20 percent rise in imports. Similarly, this year's heavy rain impacted the recently harvested crop, now forecast at 7.1 million tons, down 15 percent from last year. Consequently, 2016 imports are forecast to more than double to 750,000 tons, with most supplies likely to come from neighboring countries. Exports this year are projected to fall to 700,000 tons. With Brazil becoming a net importer and presenting less export competition, the United States is expected to seize additional opportunities to expand exports, particularly in the Western Hemisphere.

The status of net importer is not expected to remain for long, however. In 2017, Brazil's production levels are forecast to rebound to levels similar to 2 years prior and return the country to its net exporting position. The forecast recovery this time is somewhat more muted than in 2011, as 2017 exports are projected to rise only marginally from the prior year.

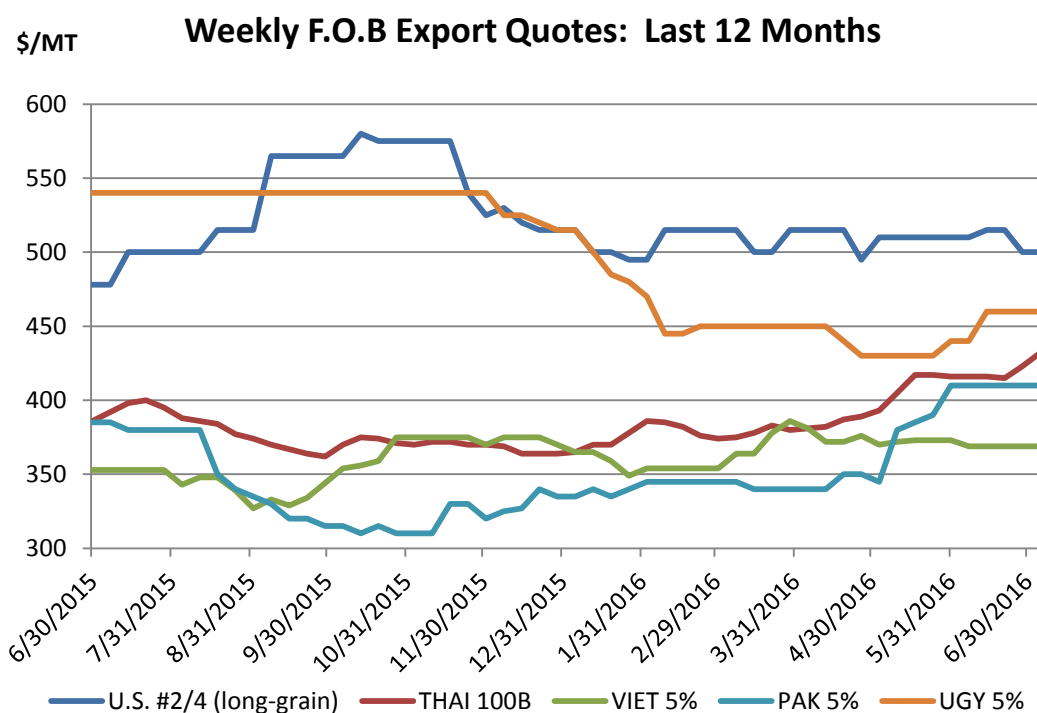
Weaker Parboiled Trade as Nigerian Policies Restrict Imports



In 2014, global exports of parboiled rice surged, but have declined every year since then in response to developments in Nigeria. The large majority of Nigeria's rice imports are parboiled. This country is the second largest importer of rice and the top parboiled rice importer, accounting for around 40 percent of parboiled trade. Nigeria's imports spiked in 2014, amid lower global prices and strong demand in advance of local elections. However, the purchasing power has eroded as the oil-dependent economy struggles with foreign exchange availability with sharply lower oil prices. In 2015, Nigeria prohibited the use of foreign exchange to purchase rice and maintained a high import tariff, causing imports to plunge. Since March 2016, Nigeria has banned rice importation via land borders, further tightening access to parboiled rice. These policies are expected to persist, causing Nigeria's rice importation to further contract in 2017.

Parboiled rice is processed to preserve nutrients and results in more separate grains when cooked. It typically accounts for less than 20 percent of all exported rice. Thailand and India are the major exporters, whereas the United States and Brazil ship smaller quantities.

PRICES



Since the beginning of June, Thai and Uruguayan export quotes have risen, continuing to lower the premium of U.S. quotes. Over the past month, reports of damage to Thailand's crop have caused export quotes to rise to \$432/ton. Severe weather has impacted production in South America as well. With reduced exportable supplies and stronger regional demand, Uruguay's quotes strengthened to \$464/ton. Vietnam and Pakistan's export quotes remained unchanged at \$369/ton and \$410/ton, respectively. U.S. quotes have also settled, sliding marginally to \$500/ton on forecasts of a larger crop.

Selected Trade Changes

- **Azerbaijan** imports are boosted 100,000 tons to 130,000 for 2017 on expected higher levels of trade from Pakistan.
- **Bangladesh** imports are trimmed 100,000 tons to 250,000 for 2016 due to the introduction of import tariffs and to increased wheat imports. Imports are halved to 250,000 tons for 2017, also on higher expected wheat purchases.
- **Brazil** exports are cut 100,000 tons to 700,000 for 2016 on a smaller crop.
- **Indonesia** imports are raised 152,000 tons to 1.4 million for 2015, while lowered 150,000 tons to 1.9 million for 2016 on the timing of shipments.
- **Iran** imports are reduced 350,000 tons to 1.1 million for 2016, as the pace of trade has slowed and the government is set to introduce an import ban this month. For 2017, imports are cut 300,000 tons to 1.2 million due to the projected impact of the ban.

-
- **Nigeria** imports are revised down 300,000 tons to 2.2 million for 2015 on final trade data. For 2016, imports are down 200,000 tons to 2.1 million due to restrictions on foreign exchange access and border trade. For 2017, imports are reduced 100,000 tons to 1.9 million on the extended impact of the import restrictions.
 - **Pakistan** exports are raised 100,000 tons to 4.5 million for 2016 on a stronger pace of trade.
 - **Saudi Arabia** imports are raised 156,000 tons to 1.6 million for 2015 on final trade data. For 2016, imports are up 100,000 tons to 1.6 million on larger purchases from Pakistan.
 - **U.S.** exports are up 100,000 tons to 3.5 million for 2016 on larger exportable supplies and reduced competition from Brazil.
 - **Vietnam** exports are reduced 100,000 tons to 6.9 million for 2016 due to weaker demand and slower trade to Southeast Asian markets.

World Rice Trade
January/December Year, Thousand Metric Tons

	2012/13	2013/14	2014/15	2015/16	2016/17 Jun	2016/17 Jul
TY Exports						
Argentina	526	494	310	480	600	600
Australia	460	404	323	180	230	200
Brazil	830	852	895	700	800	800
Burma	1,163	1,688	1,735	1,650	1,750	1,750
Cambodia	1,075	1,000	1,150	900	1,050	1,050
China	447	393	262	350	300	300
Egypt	700	600	250	200	250	200
European Union	203	284	251	270	260	260
Guyana	346	502	536	540	540	540
India	10,480	11,588	11,046	9,000	8,500	8,500
Pakistan	4,126	3,700	4,000	4,500	4,250	4,250
Paraguay	365	380	371	480	470	470
Thailand	6,722	10,969	9,779	9,800	9,000	9,000
Uruguay	939	957	718	850	840	840
Vietnam	6,700	6,325	6,606	6,900	7,000	7,000
Others	1,116	1,081	1,095	1,091	1,117	1,100
Subtotal	36,198	41,217	39,327	37,891	36,957	36,860
United States	3,295	2,998	3,472	3,450	3,600	3,650
World Total	39,493	44,215	42,799	41,341	40,557	40,510
TY Imports						
Angola	430	500	450	450	475	475
Brazil	712	586	363	750	600	600
Cameroon	550	610	525	530	530	530
China	3,500	4,450	5,150	5,000	5,000	5,000
Cote d'Ivoire	830	950	1,100	1,000	900	900
Cuba	413	377	575	530	510	510
European Union	1,375	1,556	1,786	1,600	1,600	1,600
Ghana	725	590	500	580	600	600
Haiti	416	385	444	470	440	440
Indonesia	650	1,225	1,350	1,850	1,250	1,250
Iran	2,220	1,400	1,300	1,100	1,450	1,150
Iraq	1,294	1,080	1,009	1,150	1,150	1,150
Japan	690	669	688	700	700	700
Kenya	410	440	450	460	470	470
Malaysia	885	989	1,051	1,020	1,050	1,050
Mexico	746	658	708	700	750	750
Mozambique	500	590	560	550	540	560
Nepal	340	510	529	500	550	550
Nigeria	2,400	3,200	2,200	2,100	2,000	1,900
Philippines	1,000	1,800	2,000	1,500	1,500	1,500
Saudi Arabia	1,326	1,459	1,600	1,550	1,500	1,550
Senegal	902	960	990	985	990	990
South Africa	990	910	912	1,000	925	925
United Arab Emirates	540	560	580	600	610	610
Yemen	432	440	520	400	420	420
Others	11,491	13,480	11,409	10,904	11,279	11,104
Subtotal	35,767	40,374	38,749	37,979	37,789	37,284
Unaccounted	3,051	3,086	3,292	2,597	1,993	2,451
United States	675	755	758	765	775	775
World Total	39,493	44,215	42,799	41,341	40,557	40,510

TY=Trade Year, see Endnotes. Note about dates: 2015/16 is calendar year 2016, 2014/15 is calendar year 2015, and so on.

World Rice Production, Consumption, and Stocks
Local Marketing Years, Thousand Metric Tons

	2012/13	2013/14	2014/15	2015/16	2016/17 Jun	2016/17 Jul
Milled Production						
Bangladesh	33,820	34,390	34,500	34,500	34,550	34,550
Brazil	8,037	8,300	8,465	7,125	8,500	8,500
Burma	11,715	11,957	12,600	12,200	12,500	12,500
Cambodia	4,670	4,725	4,700	4,350	4,700	4,700
China	143,000	142,530	144,560	145,770	146,500	146,500
Egypt	4,675	4,750	4,530	4,000	4,000	4,000
India	105,240	106,646	105,480	103,500	105,000	105,000
Indonesia	36,550	36,300	35,560	35,300	36,600	36,600
Japan	7,907	7,931	7,849	7,653	7,680	7,680
Korea, South	4,006	4,230	4,241	4,327	4,000	4,000
Pakistan	5,536	6,798	6,900	6,700	6,900	6,900
Philippines	11,428	11,858	11,915	11,350	12,000	12,000
Sri Lanka	2,675	2,840	2,850	3,300	3,400	3,400
Thailand	20,200	20,460	18,750	15,800	17,000	17,000
Vietnam	27,537	28,161	28,166	28,100	28,500	28,500
Others	39,151	40,446	40,532	40,555	41,553	41,623
Subtotal	466,147	472,322	471,598	464,530	473,383	473,453
United States	6,348	6,117	7,106	6,107	7,335	7,779
World Total	472,495	478,439	478,704	470,637	480,718	481,232
Consumption and Residual						
Bangladesh	34,500	34,900	35,100	35,200	35,300	35,200
Brazil	7,850	7,900	7,910	7,800	8,000	7,950
Burma	10,400	10,450	10,500	10,600	10,700	10,700
Cambodia	3,550	3,650	3,615	3,600	3,600	3,600
China	141,000	143,000	144,500	145,500	145,000	145,000
Egypt	4,050	4,000	4,000	3,950	3,900	3,950
India	94,031	98,710	98,233	98,300	98,600	98,600
Indonesia	38,127	38,500	38,300	38,100	38,100	38,100
Japan	8,351	8,380	8,600	8,600	8,700	8,700
Korea, South	4,489	4,422	4,197	4,374	4,334	4,334
Nepal	3,353	3,811	3,716	3,600	3,650	3,650
Nigeria	5,300	5,600	5,400	5,250	5,200	5,100
Philippines	12,850	12,850	13,200	13,200	13,300	13,300
Thailand	10,600	10,700	10,600	10,800	11,100	11,100
Vietnam	21,600	22,000	22,000	21,850	21,800	21,800
Others	59,079	61,169	61,263	61,638	62,881	62,821
Subtotal	461,725	474,469	473,812	474,628	476,107	476,245
United States	3,779	3,977	4,155	3,853	4,287	4,382
World Total	465,504	478,446	477,967	478,481	480,394	480,627
Ending Stocks						
China	49,832	53,102	57,436	62,406	68,056	68,606
India	25,440	22,757	17,766	13,766	11,666	11,666
Indonesia	6,476	5,501	4,111	3,161	2,909	2,911
Japan	2,857	3,007	2,821	2,494	2,089	2,089
Korea, South	780	899	1,406	1,827	1,744	1,901
Philippines	1,487	1,695	2,210	1,960	2,160	2,160
Thailand	12,808	11,899	10,570	6,070	3,220	3,220
Others	12,977	13,921	16,671	13,717	13,486	12,945
Subtotal	112,657	112,781	112,991	105,401	105,330	105,498
United States	1,156	1,025	1,552	1,298	1,615	1,806
World Total	113,813	113,806	114,543	106,699	106,945	107,304

Note: All data are reported on a milled basis.

Regional Rice Imports, Production, Consumption, and Stocks

Thousand Metric Tons

	2012/13	2013/14	2014/15	2015/16	Jun 2016/17	Jul 2016/17
TY Imports						
North America	1,776	1,771	1,816	1,825	1,890	1,890
Caribbean	971	903	1,176	1,155	1,110	1,110
South America	1,833	1,814	1,678	1,867	1,827	1,827
Other Europe	125	132	128	135	140	140
Former Soviet Union - 12	557	628	566	501	406	531
Middle East	7,252	6,711	6,462	6,150	6,605	6,355
North Africa	487	485	406	450	465	405
Sub-Saharan Africa	11,567	12,637	10,749	11,020	10,930	10,850
East Asia	5,349	6,045	6,686	6,636	6,631	6,631
South Asia	722	2,566	1,619	930	1,210	960
Southeast Asia	3,606	5,025	5,666	5,640	4,960	4,960
Others	2,197	2,412	2,555	2,435	2,390	2,400
Total	36,442	41,129	39,507	38,744	38,564	38,059
Production						
North America	6,479	6,248	7,285	6,267	7,508	7,952
Caribbean	974	1,054	1,104	996	1,005	1,005
South America	15,852	16,384	16,365	15,087	16,588	16,588
European Union - 28	2,100	1,937	1,963	2,055	2,026	2,026
Former Soviet Union - 12	1,294	1,205	1,185	1,262	1,245	1,205
Middle East	2,251	2,450	2,443	2,392	2,495	2,505
North Africa	4,704	4,789	4,530	4,000	4,000	4,000
Sub-Saharan Africa	13,272	13,984	14,438	15,127	15,390	15,390
East Asia	157,953	157,701	159,486	160,194	160,924	160,924
South Asia	150,631	154,490	153,331	151,620	153,450	153,450
Southeast Asia	115,490	116,867	115,367	110,826	114,971	115,071
Others	1,495	1,330	1,207	811	1,116	1,116
Total	472,495	478,439	478,704	470,637	480,718	481,232
Domestic Consumption						
North America	4,977	5,202	5,369	5,083	5,532	5,627
Central America	1,171	1,197	1,226	1,252	1,293	1,293
Caribbean	1,954	1,992	2,136	2,153	2,151	2,156
South America	14,354	14,542	14,568	14,602	14,776	14,746
European Union - 28	3,250	3,250	3,320	3,380	3,420	3,420
Former Soviet Union - 12	1,579	1,607	1,521	1,540	1,441	1,541
Middle East	8,989	9,190	9,232	9,020	9,160	9,060
North Africa	4,572	4,480	4,370	4,320	4,330	4,320
Sub-Saharan Africa	24,741	26,186	25,858	26,025	26,579	26,479
East Asia	157,459	159,414	160,566	161,404	161,259	161,259
South Asia	137,462	143,386	143,410	143,570	144,270	144,070
Southeast Asia	101,694	102,865	103,157	103,336	103,706	103,781
Others	707	708	556	530	535	535
Total	462,909	474,019	475,289	476,215	478,452	478,287
Ending Stocks						
North America	1,345	1,176	1,704	1,437	1,795	1,986
Central America	186	205	244	241	229	239
Caribbean	289	266	263	261	225	225
South America	1,591	1,902	2,142	1,383	1,809	1,616
European Union - 28	1,188	1,163	1,237	1,232	1,178	1,178
Middle East	2,004	1,864	1,775	1,272	1,215	1,047
North Africa	427	610	924	854	786	739
Sub-Saharan Africa	2,229	2,033	2,305	2,027	1,653	1,503
East Asia	53,832	57,296	61,919	67,003	72,185	72,892
South Asia	26,819	25,008	21,490	16,791	14,594	14,376
Southeast Asia	23,486	21,876	20,149	14,004	11,102	11,329
Oceania	238	241	223	53	63	63
Others	179	166	168	141	111	111
Total	113,813	113,806	114,543	106,699	106,945	107,304

NOTES: Regional definitions appear on last page of this circular. Imports are reported on a trade year basis. All other data are reported using local marketing years.

COARSE GRAINS: WORLD MARKETS AND TRADE

OVERVIEW

For **2016/17**, global corn production is marginally lower with reductions for Brazil, Canada, and EU more than offsetting a larger expected crop for the United States. U.S. production is projected higher on larger planted area from the NASS *Acreage* report. Global trade is lower, driven by reduced imports for the EU and South Korea. These countries are expected to use wheat in feed rations at the expense of imported corn. Forecast exports for Argentina and the United States are higher, but lower for Brazil, Canada, and the EU. The U.S. season-average farm price is projected 10 cents lower to \$3.40 per bushel.

For **2015/16**, global corn production is lowered again this month driven by a significant cut for Brazil. Nevertheless, global trade is boosted to a new record as higher imports for Brazil, China, Japan, Mexico, and South Korea more than offset a reduction for the EU. Exports for Argentina and the United States are higher, more than offsetting lower Brazilian exports. The U.S. season-average farm price is lowered 5 cents to \$3.65 per bushel.

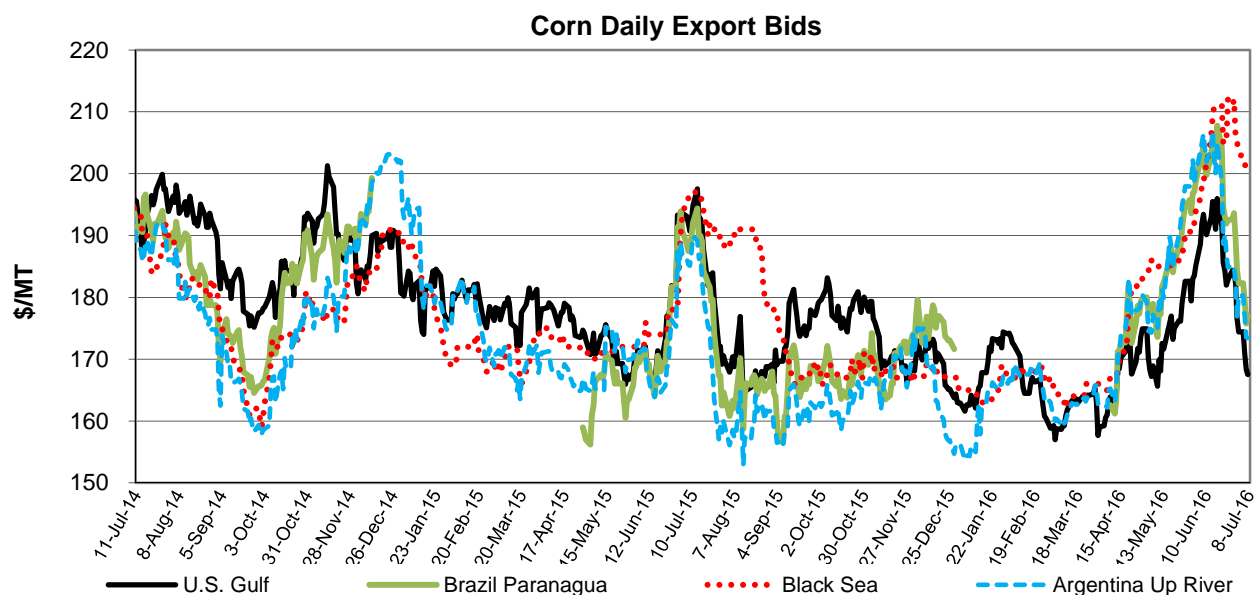
BRAZIL: SUPPLY AND DEMAND CHANGE

Brazilian 2015/16 corn production, forecast at 70.0 million tons, is down 7.5 million from last month and is the smallest crop in 5 years. Marketing Year (MY) 2015/16 (March 2016-February 2017) exports are cut 4.0 million tons to 18.5 million. Consequently, trade year 2016/17 (October-September) exports are slashed 2.5 million tons to 20.5 million and 2015/16 trade year exports are cut 1.5 million tons to 33.0 million. Additionally, 2016/17 imports are raised 100,000 tons and 2015/16 imports are up 200,000 tons. With supplies more limited and prices relatively high, domestic consumption in 2015/16 is forecast lower and ending stocks are projected tighter. Further, Brazil's 2016/17 crop is projected 2.0 million tons smaller at 80.0 million, resulting in lower projected consumption as well as MY 2016/17 exports.

PRICES

Following the release of the June WASDE report, FOB quotes for all major exporters initially moved up on expectations of drier weather. With the release of the NASS *Acreage* report, however, prices have plunged in response to prospects for larger supplies in the United States. Ongoing harvests in South America and forecasts for beneficial weather in the United States also contributed to downward pressure. U.S. quotes have fallen \$25/ton to \$168. Argentine quotes are dropped \$32/ton to \$173, and Brazilian quotes are down \$26/ton to \$177.

Even though the harvests are ongoing in Argentina and Brazil, the United States retains a price advantage based on weather-induced damage to the Brazilian crop and harvest delays in Argentina. Black Sea quotes are up \$2/ton to \$200 on tight nearby supplies. Note: Recent Brazilian quotes are for August, while all other export quotes are for nearby (30-day) shipment.



TRADE CHANGES IN 2016/17

Selected Exporters

- **U.S. corn** is boosted 2.5 million tons to 52.0 million reflecting competitive prices on larger projected supplies as well as reduced competition from Brazil.
- **Argentine corn** is up 500,000 tons to 23.0 million on greater supplies.
- **Brazilian corn** is slashed 2.5 million tons to 20.5 million based on a reduced crop.
- **Canadian corn** is down 700,000 tons to 500,000 due to a smaller expected crop.
- **EU corn** is cut 500,000 tons to 2.5 million on reduced competitiveness compared with other origins.
- **Australian barley** is boosted 200,000 tons to 6.0 million with a larger projected crop.

Selected Importers

- **EU corn** is reduced 1.0 million tons to 11.0 million as ample supplies of domestic wheat erode the need for imported corn.
- **Japanese corn** is up 500,000 tons to 15.0 million, as the feed sector is expected to purchase larger amounts of corn with lower prices. Though livestock numbers are generally declining, there has been growth in both poultry and swine populations and an increase in weights for swine.

-
- **South Korean corn** is lowered 500,000 tons to 10.0 million due to anticipated larger purchases of competitively-priced feed quality wheat.
 - **Zimbabwean corn** is raised 400,000 tons to 1.4 million on the announced target set by the government. The government has reportedly secured the funding for corn purchases.
 - **Algerian barley** is up 250,000 tons to 900,000 to mostly offset reduced production in support of continued demand for feed.
 - **Moroccan barley** is boosted 200,000 tons to 700,000 to partly offset poor pasture conditions and a reduced crop, which is forecast to be the smallest since 2007/08.

TRADE CHANGES IN 2015/16

Selected Exporters

- **U.S. corn** is raised 2.5 million tons to 48.5 million with robust sales and shipments.
- **Argentine corn** is raised 500,000 tons to 20.5 million on a larger crop and shipments to date.
- **Argentine barley** is up 400,000 tons to 2.9 million on a larger crop and continued strong demand from Saudi Arabia.
- **EU barley** is raised 200,000 tons to 9.9 million on trade to date.

Selected Importers

- **Chinese corn** is boosted 1.1 million tons to 3.1 million reflecting larger purchases from Ukraine and trade to date.
 - **EU corn** is down 1.3 million tons to 13.2 million reflecting a greater use of domestic barley and wheat for feed.
 - **Japanese corn** is raised 300,000 tons to 15.0 million on feed demand.
 - **South Korean corn** is up 300,000 tons to 10.3 million on strong feed demand.
 - **Mexican corn** is raised 500,000 tons to 13.0 million on the continued fast pace of purchases from the United States.
 - **Saudi Arabian barley** is boosted 300,000 tons to 9.8 million on trade to date.
-

World Coarse Grain Trade
October/September Year, Thousand Metric Tons

	2012/13	2013/14	2014/15	2015/16	2016/17 Jun	2016/17 Jul
TY Exports						
Argentina	29,497	16,630	21,003	24,305	25,505	26,105
Australia	6,416	7,009	7,291	6,575	7,175	7,375
Brazil	26,078	22,059	21,954	33,035	23,030	20,530
Canada	4,658	5,482	3,597	4,150	4,450	3,750
European Union	8,943	7,841	15,067	11,892	12,355	11,855
Paraguay	2,861	2,718	3,031	2,715	2,315	2,315
Russia	4,366	7,074	9,155	8,270	8,610	8,610
Serbia	605	1,799	3,001	1,740	2,260	2,260
South Africa	2,412	2,127	770	725	1,325	1,325
Ukraine	15,527	24,125	24,208	20,020	21,130	21,130
Others	10,279	11,215	7,999	7,080	7,055	6,955
Subtotal	111,642	108,079	117,076	120,507	115,210	112,210
United States	20,586	56,772	56,340	56,605	55,335	57,835
World Total	132,228	164,851	173,416	177,112	170,545	170,045
TY Imports						
Algeria	3,289	4,946	4,863	4,730	4,775	5,025
Chile	1,327	1,621	1,707	1,950	2,050	2,050
China	5,603	12,445	25,699	17,100	12,200	12,200
Colombia	4,090	4,795	4,747	4,870	4,840	4,840
Egypt	5,097	8,775	7,940	8,580	8,855	8,855
European Union	11,778	16,355	9,146	13,495	12,355	11,355
Indonesia	2,719	3,513	3,381	3,100	3,000	3,000
Iran	4,800	6,600	8,100	7,400	7,100	7,100
Israel	1,564	2,073	1,603	1,690	1,810	1,810
Japan	17,742	17,501	16,726	16,945	16,520	16,900
Jordan	1,406	1,672	1,459	1,500	1,675	1,675
Korea, South	8,265	10,499	10,245	10,390	10,590	10,090
Libya	1,220	1,493	1,685	1,600	1,500	1,500
Malaysia	3,048	3,485	3,238	3,500	3,600	3,600
Mexico	7,624	11,312	11,570	13,975	13,975	13,975
Morocco	1,832	2,858	2,217	2,850	2,800	3,000
Peru	2,404	2,336	2,863	2,825	2,835	2,835
Saudi Arabia	12,390	11,332	11,115	13,310	13,505	13,505
South Africa	92	235	607	2,925	2,650	2,650
Taiwan	4,413	4,346	3,949	4,300	4,200	4,200
Tunisia	1,608	1,449	1,524	1,800	1,900	1,900
Turkey	1,922	1,977	2,719	985	1,905	1,905
Venezuela	2,154	2,627	2,433	1,800	2,100	2,100
Vietnam	1,600	4,300	6,700	6,900	6,000	6,000
Zimbabwe	720	620	720	820	1,040	1,440
Others	14,574	17,235	18,848	19,687	18,991	18,956
Subtotal	123,281	156,400	165,804	169,027	162,771	162,466
Unaccounted	2,432	5,129	4,325	4,355	4,549	4,354
United States	6,515	3,322	3,287	3,730	3,225	3,225
World Total	132,228	164,851	173,416	177,112	170,545	170,045

TY=Trade Year, see Endnotes.

World Coarse Grains Production, Consumption, and Stocks
Local Marketing Years, Thousand Metric Tons

	2012/13	2013/14	2014/15	2015/16	2016/17 Jun	2016/17 Jul
Production						
Argentina	37,246	35,665	35,732	36,909	41,889	41,889
Australia	11,414	12,158	12,605	12,437	12,364	13,164
Brazil	84,253	82,603	87,668	72,063	84,663	82,963
Canada	24,445	28,745	21,992	25,660	26,065	24,315
China	212,192	225,408	222,750	231,780	225,700	225,700
Ethiopia	12,286	13,079	13,346	9,985	12,750	12,750
European Union	146,188	159,212	170,759	151,247	160,470	159,861
India	39,910	43,216	43,081	37,750	41,700	41,700
Indonesia	8,500	9,100	9,000	9,400	9,600	9,600
Mexico	28,881	32,065	32,689	31,389	31,925	31,925
Nigeria	18,573	19,292	19,015	17,950	18,500	18,500
Russia	28,658	35,735	40,386	37,427	39,375	39,375
South Africa	12,873	15,518	11,110	7,025	13,583	13,583
Turkey	10,595	13,090	9,425	14,275	11,575	10,925
Ukraine	29,528	40,022	39,389	33,387	35,775	36,225
Others	145,578	148,666	159,010	152,512	154,812	154,522
Subtotal	851,120	913,574	927,957	881,196	920,746	916,997
United States	285,311	367,089	377,234	366,902	382,256	385,403
World Total	1,136,431	1,280,663	1,305,191	1,248,098	1,303,002	1,302,400
Domestic Consumption						
Argentina	12,050	13,695	14,232	14,431	15,439	15,439
Brazil	55,803	58,028	60,023	58,018	61,953	61,243
Canada	20,338	22,347	21,288	21,953	22,530	22,130
China	209,671	223,546	229,059	239,025	246,150	245,150
Egypt	12,910	14,080	14,809	15,703	16,008	16,008
European Union	153,341	164,401	162,500	157,379	161,295	160,295
India	35,075	37,600	40,400	39,520	41,150	41,150
Iran	10,520	11,320	12,020	13,520	14,220	14,220
Japan	17,830	17,570	16,933	17,246	16,631	17,211
Mexico	36,195	40,935	42,075	43,315	44,715	44,915
Nigeria	18,700	19,350	18,950	18,150	18,500	18,500
Russia	25,134	28,619	31,139	29,840	30,775	30,775
Saudi Arabia	10,925	11,550	12,025	13,350	14,125	14,125
Turkey	13,005	13,430	13,055	14,430	13,680	13,280
Ukraine	14,661	15,977	15,430	14,225	14,430	14,530
Others	219,027	227,975	240,987	239,690	243,971	244,096
Subtotal	859,121	927,544	960,662	937,475	983,143	981,573
United States	275,537	305,048	311,347	313,292	323,044	321,345
World Total	1,134,658	1,232,592	1,272,009	1,250,767	1,306,187	1,302,918
Ending Stocks						
Brazil	9,560	14,258	8,211	5,621	6,951	6,311
Canada	3,024	4,648	3,342	4,109	4,259	3,609
China	68,377	82,651	102,019	111,829	102,449	104,549
European Union	13,055	15,565	18,805	14,273	14,648	13,339
Iran	4,654	5,094	7,234	7,274	6,514	6,514
Mexico	1,542	3,487	4,860	5,909	5,894	6,094
Saudi Arabia	3,415	3,912	3,500	4,000	3,520	3,820
Others	36,874	48,175	50,366	42,186	40,517	41,068
Subtotal	140,501	177,790	198,337	195,201	184,752	185,304
United States	23,531	34,313	46,948	47,415	54,902	56,794
World Total	164,032	212,103	245,285	242,616	239,654	242,098

Regional Coarse Grains Imports, Production, Consumption, and Stocks

Thousand Metric Tons

	2012/13	2013/14	2014/15	2015/16	Jun 2016/17	Jul 2016/17
TY Imports						
North America	14,661	15,348	16,567	18,840	18,265	18,265
Central America	2,470	2,923	3,460	3,675	3,610	3,610
Caribbean	2,327	2,330	2,444	2,460	2,560	2,560
South America	11,812	13,181	13,353	13,575	13,410	13,375
European Union - 28	11,778	16,355	9,146	13,495	12,355	11,355
Former Soviet Union - 12	728	807	730	685	705	705
Middle East	25,078	26,614	27,842	27,925	29,025	29,025
North Africa	13,046	19,521	18,229	19,560	19,830	20,280
Sub-Saharan Africa	2,742	3,632	4,523	7,276	6,890	7,290
East Asia	36,176	44,865	56,676	48,805	43,590	43,470
Southeast Asia	7,961	12,814	14,736	14,970	14,175	14,175
Others	1,017	1,332	1,385	1,491	1,581	1,581
Total	129,796	159,722	169,091	172,757	165,996	165,691
Production						
North America	338,637	427,899	431,915	423,951	440,246	441,643
South America	136,025	132,425	136,767	122,583	140,099	138,651
European Union - 28	146,188	159,212	170,759	151,247	160,470	159,861
Other Europe	6,570	8,813	10,649	8,946	9,973	9,973
Former Soviet Union - 12	68,222	87,758	91,599	82,761	87,581	88,031
Middle East	18,769	21,774	17,888	23,382	20,622	19,972
North Africa	10,155	11,556	11,073	12,516	10,056	9,639
Sub-Saharan Africa	103,534	102,584	108,311	92,806	103,950	103,950
East Asia	214,616	227,798	225,528	234,420	228,359	228,359
South Asia	47,642	51,986	51,827	46,304	50,528	50,528
Southeast Asia	29,158	31,003	31,088	31,607	33,398	33,273
Oceania	12,082	12,805	13,273	13,144	13,004	13,804
Others	4,833	5,050	4,514	4,431	4,716	4,716
Total	1,136,431	1,280,663	1,305,191	1,248,098	1,303,002	1,302,400
Domestic Consumption						
North America	332,070	368,330	374,710	378,560	390,289	388,390
South America	89,796	94,515	97,134	95,422	101,024	100,389
European Union - 28	153,341	164,401	162,500	157,379	161,295	160,295
Other Europe	7,100	7,707	8,036	8,252	8,292	8,292
Former Soviet Union - 12	50,225	55,686	58,148	55,693	57,076	57,176
Middle East	43,027	45,892	45,679	50,077	50,887	50,487
North Africa	24,941	27,987	30,177	31,804	31,338	31,538
Sub-Saharan Africa	103,220	102,314	109,843	101,925	104,640	104,990
East Asia	242,831	257,690	262,977	273,387	280,107	279,237
South Asia	42,704	46,167	49,321	48,720	50,634	50,634
Southeast Asia	35,787	38,943	41,558	45,005	46,416	45,916
Oceania	6,107	5,764	5,946	6,274	5,799	6,249
Others	9,573	10,075	10,243	10,589	10,819	10,819
Total	1,140,722	1,225,471	1,256,272	1,263,087	1,298,616	1,294,412
Ending Stocks						
North America	28,097	42,448	55,150	57,433	65,055	66,497
South America	15,559	21,875	15,019	12,237	13,467	12,924
European Union - 28	13,055	15,565	18,805	14,273	14,648	13,339
Other Europe	631	751	1,064	845	1,193	1,163
Former Soviet Union - 12	4,983	7,029	7,435	4,783	4,922	5,158
Middle East	10,118	11,911	12,873	13,923	12,193	12,363
North Africa	3,553	5,666	5,514	5,846	4,339	4,317
Sub-Saharan Africa	9,049	9,559	11,295	7,770	8,775	8,825
East Asia	71,678	86,663	105,873	115,666	106,498	108,228
South Asia	2,408	4,099	5,301	2,930	2,710	2,710
Southeast Asia	3,230	4,472	4,465	4,402	3,400	3,799
Oceania	902	1,115	1,524	1,599	1,478	1,824
Others	769	950	967	909	976	951
Total	164,032	212,103	245,285	242,616	239,654	242,098

NOTES: Regional definitions appear on last page of this circular. Imports are reported on a trade year basis. All other data are reported using local marketing years.

World Corn Trade
October/September Year, Thousand Metric Tons

	2012/13	2013/14	2014/15	2015/16	2016/17 Jun	2016/17 Jul
TY Exports						
Argentina	22,789	12,846	18,448	20,500	22,500	23,000
Brazil	26,044	22,041	21,909	33,000	23,000	20,500
Burma	550	700	850	900	950	950
European Union	2,194	2,404	4,026	1,600	3,000	2,500
Mexico	522	501	784	1,000	800	800
Paraguay	2,858	2,714	3,012	2,700	2,300	2,300
Russia	1,917	4,194	3,213	4,400	4,500	4,500
Serbia	578	1,780	2,964	1,700	2,200	2,200
South Africa	2,398	2,104	746	700	1,300	1,300
Ukraine	12,726	20,004	19,661	16,000	17,000	17,000
Others	9,708	10,451	5,582	4,945	5,200	4,400
Subtotal	82,284	79,739	81,195	87,445	82,750	79,450
United States	18,262	50,684	46,773	48,500	49,500	52,000
World Total	100,546	130,423	127,968	135,945	132,250	131,450
TY Imports						
Algeria	2,918	4,156	4,116	4,100	4,100	4,100
Canada	492	678	1,533	1,000	1,000	1,000
Chile	844	1,456	1,516	1,700	1,800	1,800
China	2,702	3,277	5,516	3,100	1,000	1,000
Colombia	3,266	4,436	4,496	4,500	4,500	4,500
Dominican Republic	1,046	1,011	1,202	1,200	1,225	1,225
Egypt	5,059	8,726	7,841	8,500	8,750	8,750
European Union	11,362	16,014	8,646	13,200	12,000	11,000
Indonesia	2,719	3,513	3,381	3,100	3,000	3,000
Iran	3,700	5,500	6,200	5,500	5,500	5,500
Israel	1,224	1,652	1,296	1,400	1,500	1,500
Japan	14,411	15,121	14,657	15,000	14,500	15,000
Korea, South	8,174	10,406	10,168	10,300	10,500	10,000
Malaysia	3,048	3,485	3,238	3,500	3,600	3,600
Mexico	5,676	10,949	11,269	13,000	13,000	13,000
Morocco	1,684	2,349	1,941	2,100	2,300	2,300
Peru	2,254	2,232	2,741	2,700	2,700	2,700
Saudi Arabia	2,063	2,684	2,904	3,500	3,500	3,500
South Africa	0	79	469	2,700	2,500	2,500
Taiwan	4,241	4,179	3,821	4,200	4,100	4,100
Tunisia	846	993	1,041	1,200	1,200	1,200
Turkey	1,656	1,381	2,377	900	1,500	1,500
Venezuela	2,154	2,626	2,433	1,800	2,100	2,100
Vietnam	1,600	4,300	6,700	6,900	6,000	6,000
Zimbabwe	700	600	700	800	1,000	1,400
Others	11,026	14,156	14,468	15,521	15,250	15,350
Subtotal	94,865	125,959	124,670	131,421	128,125	127,625
Unaccounted	1,416	3,737	2,489	3,024	3,125	2,825
United States	4,265	727	809	1,500	1,000	1,000
World Total	100,546	130,423	127,968	135,945	132,250	131,450

TY=Trade Year, see Endnotes.

World Corn Production, Consumption, and Stocks
Local Marketing Years, Thousand Metric Tons

	2012/13	2013/14	2014/15	2015/16	2016/17 Jun	2016/17 Jul
Production						
Argentina	27,000	26,000	28,700	28,000	34,000	34,000
Brazil	81,500	80,000	85,000	70,000	82,000	80,000
Canada	13,060	14,194	11,487	13,600	13,750	12,500
China	205,614	218,490	215,646	224,580	218,000	218,000
Ethiopia	6,158	6,492	6,580	5,050	6,300	6,300
European Union	59,142	64,931	75,779	57,979	64,275	63,831
India	22,258	24,259	24,170	21,000	23,000	23,000
Indonesia	8,500	9,100	9,000	9,400	9,600	9,600
Mexico	21,591	22,880	25,480	25,000	24,200	24,200
Nigeria	7,630	7,700	7,515	7,000	7,200	7,200
Philippines	7,261	7,532	7,671	7,500	8,000	8,000
Russia	8,213	11,635	11,325	13,168	14,000	14,000
Serbia	3,750	5,900	7,700	6,000	7,000	7,000
South Africa	12,365	14,925	10,629	6,500	13,000	13,000
Ukraine	20,922	30,900	28,450	23,333	26,000	26,000
Others	91,579	95,161	97,335	96,191	94,904	94,779
Subtotal	596,543	640,099	652,467	614,301	645,229	641,410
United States	273,192	351,272	361,091	345,486	366,539	369,333
World Total	869,735	991,371	1,013,558	959,787	1,011,768	1,010,743
Total Consumption						
Argentina	7,900	8,800	9,300	9,300	10,400	10,400
Brazil	52,500	55,000	57,000	55,500	59,000	58,000
Canada	11,604	12,675	12,820	13,400	13,600	13,400
China	200,000	208,000	202,000	217,500	227,000	226,000
Egypt	12,000	13,200	13,900	14,750	15,050	15,050
European Union	69,846	76,796	77,880	72,714	74,300	73,300
India	17,500	19,600	22,300	22,200	22,800	22,800
Indonesia	10,900	11,900	12,200	12,800	13,000	12,600
Japan	14,300	15,000	14,600	15,100	14,400	15,100
Korea, South	8,481	9,891	10,250	10,350	10,550	10,100
Mexico	27,000	31,700	34,450	36,000	36,100	36,300
Philippines	7,400	8,000	8,500	8,700	8,800	8,800
Russia	6,400	7,500	8,100	8,900	9,500	9,500
South Africa	11,000	11,500	11,700	11,000	11,300	11,300
Vietnam	6,400	7,700	9,400	11,900	12,500	12,500
Others	143,094	152,632	157,787	156,947	158,408	158,658
Subtotal	601,804	655,954	678,934	661,878	702,689	700,629
United States	262,973	292,965	301,854	299,522	310,403	308,625
World Total	864,777	948,919	980,788	961,400	1,013,092	1,009,254
Ending Stocks						
Argentina	1,308	1,408	1,909	1,614	2,219	2,219
Brazil	9,150	13,972	7,842	5,342	6,542	5,942
China	67,570	81,315	100,464	110,624	101,504	103,604
European Union	5,146	6,891	9,410	6,275	5,250	5,306
Iran	3,236	4,476	5,816	5,656	5,096	5,096
Korea, South	1,265	1,860	1,860	1,885	1,864	1,864
Mexico	975	2,603	4,118	5,118	5,118	5,218
Others	23,781	31,925	33,119	27,185	26,536	26,287
Subtotal	112,431	144,450	164,538	163,699	154,129	155,536
United States	20,859	31,292	43,974	43,200	50,995	52,852
World Total	133,290	175,742	208,512	206,899	205,124	208,388

Regional Corn Imports, Production, Consumption, and Stocks

Thousand Metric Tons

	2012/13	2013/14	2014/15	2015/16	Jun 2016/17	Jul 2016/17
TY Imports						
North America	10,433	12,354	13,611	15,500	15,000	15,000
Central America	2,470	2,922	3,460	3,675	3,610	3,610
South America	9,651	12,027	12,040	12,195	12,050	12,150
European Union - 28	11,362	16,014	8,646	13,200	12,000	11,000
Former Soviet Union - 12	322	448	498	425	420	420
Middle East	10,944	13,812	15,338	13,900	14,625	14,625
North Africa	11,154	17,036	15,623	16,600	17,050	17,050
Sub-Saharan Africa	2,092	2,939	3,772	6,231	6,235	6,635
East Asia	29,681	33,057	34,219	32,670	30,180	30,180
Southeast Asia	7,943	12,768	14,722	14,955	14,160	14,160
Caribbean	2,327	2,330	2,444	2,460	2,560	2,560
Others	751	979	1,106	1,110	1,235	1,235
Total	99,130	126,686	125,479	132,921	129,125	128,625
Production						
North America	307,843	388,346	398,058	384,086	404,489	406,033
South America	120,997	118,037	125,140	109,525	127,395	125,395
European Union - 28	59,142	64,931	75,779	57,979	64,275	63,831
Other Europe	4,915	7,210	8,945	7,176	8,179	8,179
Former Soviet Union - 12	32,310	46,916	43,801	40,422	44,160	44,160
Middle East	7,480	8,158	7,838	9,228	8,508	8,508
North Africa	5,919	5,898	6,161	6,201	6,201	6,201
Sub-Saharan Africa	60,522	63,493	62,400	53,883	59,628	59,628
East Asia	207,737	220,583	218,095	226,928	220,358	220,358
South Asia	28,857	31,865	31,740	28,370	30,570	30,570
Central America	3,743	3,893	3,366	3,300	3,560	3,560
Southeast Asia	28,893	30,721	30,794	31,312	33,108	32,983
Others	1,377	1,320	1,441	1,377	1,337	1,337
Total	869,735	991,371	1,013,558	959,787	1,011,768	1,010,743
Domestic Consumption						
North America	301,577	337,340	349,124	348,922	360,103	358,325
South America	78,981	83,691	86,531	84,895	90,105	89,105
European Union - 28	69,846	76,796	77,880	72,714	74,300	73,300
Other Europe	5,194	5,847	6,122	6,285	6,290	6,290
Former Soviet Union - 12	18,080	21,130	21,482	21,375	22,265	22,265
Middle East	18,710	19,785	21,810	22,935	23,835	23,835
North Africa	18,450	20,800	22,100	23,150	23,675	23,675
Sub-Saharan Africa	60,006	62,418	63,855	61,312	60,088	60,438
East Asia	229,234	239,185	233,237	249,395	258,405	257,655
South Asia	23,980	26,982	30,007	30,070	30,970	30,970
Southeast Asia	35,509	38,654	41,224	44,700	46,110	45,610
Central America	6,175	6,650	6,690	6,920	7,100	7,100
Others	3,556	3,581	3,979	3,910	3,865	3,865
Total	869,298	942,859	964,041	976,583	1,007,111	1,002,433
Ending Stocks						
North America	23,383	35,495	49,494	49,920	57,665	59,272
South America	13,628	19,463	12,966	10,221	11,716	11,116
European Union - 28	5,146	6,891	9,410	6,275	5,250	5,306
Other Europe	384	505	860	661	990	990
Former Soviet Union - 12	1,948	3,368	3,023	1,885	2,158	2,235
Middle East	4,286	6,035	7,300	7,248	6,401	6,401
North Africa	1,771	3,117	3,306	2,897	2,463	2,463
Sub-Saharan Africa	6,589	7,534	8,794	6,041	6,841	6,891
East Asia	70,378	84,856	103,925	114,108	105,271	106,971
South Asia	1,744	3,005	3,935	2,260	1,930	1,930
Southeast Asia	3,225	4,466	4,459	4,396	3,400	3,799
Central America	474	610	587	617	667	667
Others	334	397	453	370	372	347
Total	133,290	175,742	208,512	206,899	205,124	208,388

NOTES: Regional definitions appear on last page of this circular. Imports are reported on a trade year basis. All other data are reported using local marketing years.

World Barley Trade
October/September Year, Thousand Metric Tons

	2012/13	2013/14	2014/15	2015/16	2016/17 Jun	2016/17 Jul
TY Exports						
Argentina	3,647	2,829	1,599	2,900	1,900	2,000
Australia	4,622	6,261	5,266	5,200	5,800	6,000
Canada	1,316	1,714	1,384	1,450	1,400	1,400
European Union	6,501	4,926	10,642	9,900	9,000	9,000
India	546	546	97	100	200	200
Kazakhstan	151	501	476	800	700	700
Russia	2,366	2,791	5,807	3,800	4,000	4,000
Serbia	26	18	37	40	60	60
Ukraine	2,659	3,827	4,332	3,800	4,000	4,000
Uruguay	107	36	43	25	50	50
Others	58	42	129	65	75	75
Subtotal	21,999	23,491	29,812	28,080	27,185	27,485
United States	163	336	292	275	300	300
World Total	22,162	23,827	30,104	28,355	27,485	27,785
TY Imports						
Algeria	364	778	723	600	650	900
Azerbaijan	14	78	103	100	100	100
Brazil	369	337	489	400	400	400
Chile	79	56	93	100	100	100
China	2,183	4,891	9,859	7,000	6,000	6,000
Colombia	232	253	249	300	285	285
Iran	1,100	1,100	1,900	1,900	1,600	1,600
Israel	244	304	278	250	275	275
Japan	1,356	1,294	1,097	1,100	1,100	1,100
Jordan	831	997	759	850	1,000	1,000
Kuwait	388	436	412	400	400	400
Libya	573	681	1,001	900	800	800
Mexico	47	108	186	175	175	175
Morocco	148	471	276	750	500	700
Peru	103	87	122	100	110	110
Saudi Arabia	10,200	8,500	8,200	9,800	10,000	10,000
Syria	300	100	100	100	200	200
Tunisia	762	456	483	600	700	700
Turkey	266	596	332	80	400	400
United Arab Emirates	541	468	367	500	400	400
Others	1,113	1,049	1,414	1,106	1,116	981
Subtotal	21,213	23,040	28,443	27,111	26,311	26,626
Unaccounted	518	265	1,231	824	774	759
United States	431	522	430	420	400	400
World Total	22,162	23,827	30,104	28,355	27,485	27,785

TY=Trade Year, see Endnotes.

World Barley Production, Consumption, and Stocks
Local Marketing Years, Thousand Metric Tons

	2012/13	2013/14	2014/15	2015/16	2016/17 Jun	2016/17 Jul
Production						
Algeria	1,500	1,500	1,300	1,300	1,300	1,000
Argentina	5,000	4,750	2,900	4,900	3,400	3,400
Australia	7,472	9,174	8,646	8,593	8,500	9,000
Belarus	1,917	1,674	1,988	2,000	2,100	2,100
Canada	8,012	10,237	7,119	8,225	8,500	8,100
China	1,626	1,700	1,810	1,800	2,000	2,000
Ethiopia	1,782	1,908	2,030	1,950	2,050	2,050
European Union	54,875	59,674	60,615	61,349	62,927	62,762
India	1,619	1,752	1,831	1,610	1,700	1,700
Iran	2,770	2,800	3,200	3,800	3,800	3,800
Iraq	500	944	1,000	1,050	1,100	1,100
Kazakhstan	1,500	2,539	2,412	2,675	2,700	2,700
Russia	13,952	15,389	20,026	17,083	17,750	17,750
Turkey	5,500	7,300	4,000	7,400	5,400	4,750
Ukraine	6,935	7,561	9,450	8,751	8,650	9,100
Others	9,055	10,667	9,522	11,318	8,812	8,947
Subtotal	124,015	139,569	137,849	143,804	140,689	140,259
United States	4,768	4,719	3,953	4,666	4,202	3,979
World Total	128,783	144,288	141,802	148,470	144,891	144,238
Total Consumption						
Algeria	2,000	2,050	2,050	2,050	2,050	2,050
Australia	3,000	2,800	3,100	3,000	2,700	2,900
Belarus	2,000	1,800	2,000	2,000	2,100	2,100
Canada	6,809	7,720	6,472	6,600	6,950	6,750
China	4,000	6,300	11,600	9,000	8,100	8,100
Ethiopia	1,725	1,925	2,025	2,025	2,025	2,025
European Union	51,000	53,400	50,900	51,900	53,900	53,900
India	1,525	1,200	1,400	1,520	1,550	1,550
Iran	4,300	4,500	4,600	5,300	5,600	5,600
Kazakhstan	1,375	2,000	2,000	2,000	2,050	2,050
Morocco	1,900	2,300	2,700	3,400	2,450	2,650
Russia	12,100	12,700	14,100	13,600	13,800	13,800
Saudi Arabia	8,325	8,625	8,525	9,725	10,325	10,325
Turkey	6,200	6,950	5,350	6,900	5,900	5,500
Ukraine	5,100	5,000	4,700	4,700	4,700	4,800
Others	15,524	16,980	16,802	17,390	17,089	17,164
Subtotal	126,429	136,022	137,454	143,085	141,983	141,933
United States	4,638	4,775	4,234	4,314	4,419	4,419
World Total	131,067	140,797	141,688	147,399	146,402	146,352
Ending Stocks						
Algeria	1,217	1,178	1,304	1,304	1,104	1,154
Australia	536	693	1,020	1,113	988	1,213
Canada	983	1,950	1,217	1,592	1,792	1,592
European Union	5,044	5,621	5,877	5,526	6,853	5,488
Iran	1,418	618	1,418	1,618	1,418	1,418
Saudi Arabia	3,006	3,396	3,081	3,466	3,051	3,351
Ukraine	872	971	1,265	1,021	976	1,126
Others	5,549	7,648	7,087	7,180	5,797	5,696
Subtotal	18,625	22,075	22,269	22,820	21,979	21,038
United States	1,750	1,791	1,711	2,231	2,051	1,899
World Total	20,375	23,866	23,980	25,051	24,030	22,937

Regional Barley Imports, Production, Consumption, and Stocks

Thousand Metric Tons

	2012/13	2013/14	2014/15	2015/16	Jun 2016/17	Jul 2016/17
TY Imports						
North America	499	639	781	720	625	625
South America	1,064	886	1,169	1,095	1,090	955
European Union - 28	53	58	269	100	100	100
Other Europe	126	163	120	130	155	155
Former Soviet Union - 12	378	352	226	255	280	280
Middle East	13,906	12,537	12,453	13,965	14,355	14,355
North Africa	1,884	2,432	2,581	2,925	2,750	3,200
Sub-Saharan Africa	52	116	138	90	90	90
East Asia	3,668	6,320	11,080	8,225	7,225	7,225
South Asia	6	13	24	16	16	16
Oceania	8	46	32	10	25	25
Total	21,644	23,562	28,873	27,531	26,711	27,026
Production						
North America	13,812	15,550	11,918	13,643	13,437	12,814
South America	5,884	5,737	3,769	5,873	4,448	4,700
European Union - 28	54,875	59,674	60,615	61,349	62,927	62,762
Other Europe	1,188	1,151	1,223	1,287	1,307	1,307
Former Soviet Union - 12	25,958	29,162	35,565	32,338	33,100	33,550
Middle East	9,689	12,047	8,653	12,858	10,718	10,068
North Africa	3,307	4,748	4,010	5,394	2,925	2,508
Sub-Saharan Africa	2,283	2,376	2,523	2,497	2,600	2,600
East Asia	1,920	1,991	2,134	2,088	2,297	2,297
South Asia	1,956	2,261	2,340	2,113	2,232	2,232
Oceania	7,911	9,591	9,052	9,030	8,900	9,400
Total	128,783	144,288	141,802	148,470	144,891	144,238
Domestic Consumption						
North America	12,347	13,245	11,556	11,839	12,294	12,094
South America	3,152	3,528	3,403	3,785	3,578	3,653
European Union - 28	51,000	53,400	50,900	51,900	53,900	53,900
Other Europe	1,298	1,298	1,354	1,389	1,409	1,409
Former Soviet Union - 12	22,339	23,460	24,724	24,330	24,690	24,790
Middle East	22,435	24,410	22,250	25,771	25,616	25,216
North Africa	5,560	6,230	7,159	7,703	6,708	6,908
Sub-Saharan Africa	2,285	2,480	2,555	2,638	2,640	2,640
East Asia	5,812	8,009	13,192	10,580	9,660	9,660
South Asia	1,868	1,715	1,915	2,039	2,088	2,088
Oceania	3,425	3,250	3,550	3,450	3,125	3,325
Total	131,521	141,025	142,558	145,424	145,708	145,683
Ending Stocks						
North America	3,014	3,974	3,326	4,223	4,228	3,876
South America	657	816	711	851	781	903
European Union - 28	5,044	5,621	5,877	5,526	6,853	5,488
Other Europe	220	205	166	146	171	141
Former Soviet Union - 12	2,194	2,605	3,406	2,174	2,085	2,244
Middle East	5,736	5,788	5,514	6,631	5,743	5,913
North Africa	1,715	2,480	2,138	2,874	1,796	1,774
Sub-Saharan Africa	330	338	442	389	439	439
East Asia	736	1,038	1,060	793	655	655
South Asia	141	253	266	280	240	240
Oceania	588	748	1,074	1,164	1,039	1,264
Total	20,375	23,866	23,980	25,051	24,030	22,937

NOTES: Regional definitions appear on last page of this circular. Imports are reported on a trade year basis. All other data are reported using local marketing years.

World Sorghum Trade
October/September Year, Thousand Metric Tons

	2012/13	2013/14	2014/15	2015/16	2016/17 Jun	2016/17 Jul
TY Exports						
Argentina	3,059	953	954	900	1,100	1,100
Australia	1,430	410	1,700	1,000	1,000	1,000
Brazil	2	11	13	30	25	25
Ethiopia	75	75	75	25	25	25
India	231	88	121	50	50	50
Nigeria	50	50	100	50	100	100
Ukraine	124	229	156	130	50	50
Others	191	217	170	152	140	140
Subtotal	5,162	2,033	3,289	2,337	2,490	2,490
United States	2,136	5,717	9,249	7,800	5,500	5,500
World Total	7,298	7,750	12,538	10,137	7,990	7,990
TY Imports						
Chile	404	109	98	150	150	150
China	631	4,161	10,162	6,800	5,000	5,000
Colombia	591	104	0	65	50	50
Ethiopia	50	50	75	150	50	50
European Union	291	184	131	120	150	150
Japan	1,897	1,003	903	780	850	730
Kenya	102	94	119	75	100	100
Mexico	1,793	162	29	700	700	700
South Sudan	6	125	100	100	50	50
Sudan	175	75	100	300	100	100
Others	676	691	336	565	395	395
Subtotal	6,616	6,758	12,053	9,805	7,595	7,475
Unaccounted	439	989	458	222	370	490
United States	243	3	27	110	25	25
World Total	7,298	7,750	12,538	10,137	7,990	7,990

TY=Trade Year, see Endnotes.

World Sorghum Production, Consumption, and Stocks
Local Marketing Years, Thousand Metric Tons

	2012/13	2013/14	2014/15	2015/16	2016/17 Jun	2016/17 Jul
Production						
Argentina	4,700	4,400	3,500	3,375	3,900	3,900
Australia	2,230	1,282	2,209	2,037	2,200	2,200
Brazil	2,102	1,890	2,055	1,450	2,000	2,000
Burkina	1,924	1,880	1,708	1,671	1,800	1,800
Cameroon	1,100	1,150	1,150	1,150	1,150	1,150
Chad	1,172	745	900	817	900	900
China	2,556	2,892	2,885	3,000	3,200	3,200
Ethiopia	3,604	3,829	4,000	2,600	3,700	3,700
India	5,281	5,542	5,450	4,600	5,500	5,500
Mali	1,212	820	1,272	1,300	1,300	1,300
Mexico	6,174	8,500	6,270	5,550	6,900	6,900
Niger	1,376	1,320	1,426	1,300	1,300	1,300
Nigeria	5,943	6,592	6,700	6,150	6,500	6,500
South Sudan	650	680	990	900	900	900
Sudan	4,524	2,249	6,281	2,388	5,500	5,500
Others	6,768	7,206	7,242	6,824	6,902	6,902
Subtotal	51,316	50,977	54,038	45,112	53,652	53,652
United States	6,293	9,966	10,988	15,158	10,338	10,668
World Total	57,609	60,943	65,026	60,270	63,990	64,320
Total Consumption						
Argentina	2,300	2,700	2,800	2,800	2,950	2,950
Australia	1,080	905	505	1,105	1,105	1,105
Brazil	2,300	2,000	2,000	1,500	1,900	1,900
Burkina	1,850	1,900	1,700	1,700	1,800	1,800
Cameroon	1,110	1,165	1,175	1,175	1,175	1,175
China	3,200	6,800	12,900	9,900	8,300	8,300
Ethiopia	3,700	3,900	4,100	2,900	3,650	3,650
European Union	795	880	995	890	920	920
India	5,150	5,200	5,100	5,000	5,400	5,400
Mali	1,200	950	1,200	1,300	1,300	1,300
Mexico	8,100	8,300	6,600	6,200	7,500	7,500
Niger	1,200	1,300	1,450	1,400	1,300	1,300
Nigeria	5,900	6,550	6,650	6,050	6,400	6,400
South Sudan	650	750	1,050	1,000	1,000	1,000
Sudan	4,700	2,550	6,000	3,100	5,500	5,500
Others	10,607	8,659	8,690	8,252	8,331	8,211
Subtotal	52,647	55,573	62,745	54,887	59,214	59,214
United States	4,796	4,127	2,429	6,224	5,080	5,079
World Total	57,443	59,700	65,174	61,111	64,294	64,293
Ending Stocks						
Argentina	781	1,202	971	846	521	496
Australia	185	172	246	178	246	273
China	326	568	706	581	471	471
Mexico	285	647	338	388	388	488
Niger	225	270	271	196	221	221
Nigeria	208	200	150	200	200	200
Sudan	588	357	723	306	401	401
Others	1,804	1,750	2,009	1,199	1,365	1,345
Subtotal	4,402	5,166	5,414	3,894	3,813	3,895
United States	385	864	468	1,147	1,096	1,173
World Total	4,787	6,030	5,882	5,041	4,909	5,068

Regional Sorghum Imports, Production, Consumption, and Stocks

Thousand Metric Tons

	2012/13	2013/14	2014/15	2015/16	Jun 2016/17	Jul 2016/17
TY Imports						
North America	2,036	165	56	810	725	725
South America	1,071	239	114	255	240	240
European Union - 28	291	184	131	120	150	150
Other Europe	0	0	0	0	0	0
Middle East	194	232	23	40	15	15
North Africa	1	41	1	5	5	5
Sub-Saharan Africa	587	558	567	905	515	515
East Asia	2,650	5,281	11,142	7,635	5,905	5,785
Southeast Asia	18	46	14	15	15	15
Others	11	15	32	130	50	50
Total	6,859	6,761	12,080	9,915	7,620	7,500
Production						
North America	12,467	18,466	17,258	20,708	17,238	17,568
Central America	339	335	335	335	335	335
Caribbean	92	94	94	94	94	94
South America	7,495	7,081	6,404	5,667	6,777	6,777
European Union - 28	473	703	883	769	775	775
Middle East	814	789	691	535	635	635
North Africa	763	754	755	755	755	755
Sub-Saharan Africa	24,708	22,472	27,678	21,377	26,199	26,199
East Asia	2,560	2,895	2,887	3,002	3,202	3,202
South Asia	5,404	5,661	5,553	4,745	5,630	5,630
Southeast Asia	55	57	55	55	50	50
Oceania	2,230	1,282	2,209	2,037	2,200	2,200
Others	209	354	224	191	100	100
Total	57,609	60,943	65,026	60,270	63,990	64,320
Domestic Consumption						
North America	12,896	12,427	9,029	12,424	12,580	12,579
Central America	325	325	330	340	335	335
Caribbean	92	94	94	94	94	94
South America	6,076	5,757	5,785	5,302	5,907	5,907
European Union - 28	795	880	995	890	920	920
Middle East	1,052	894	865	590	645	645
North Africa	756	793	755	755	755	755
Sub-Saharan Africa	24,914	23,137	27,670	22,871	26,339	26,339
East Asia	5,221	7,951	13,911	10,710	9,210	9,090
South Asia	5,283	5,334	5,235	5,275	5,580	5,580
Southeast Asia	68	64	95	65	66	66
Oceania	1,080	905	505	1,105	1,105	1,105
Others	80	75	75	75	75	75
Total	58,638	58,636	65,344	60,496	63,611	63,490
Ending Stocks						
North America	670	1,511	806	1,535	1,484	1,661
Central America	30	33	38	28	23	23
South America	1,146	1,467	1,237	1,037	852	777
European Union - 28	5	18	23	17	17	17
Middle East	65	47	39	24	29	29
North Africa	66	68	69	74	79	79
Sub-Saharan Africa	2,073	1,647	2,026	1,312	1,467	1,467
East Asia	413	627	736	638	495	525
South Asia	109	364	593	143	193	193
Oceania	185	172	246	178	246	273
Others	25	76	69	55	24	24
Total	4,787	6,030	5,882	5,041	4,909	5,068

NOTES: Regional definitions appear on last page of this circular. Imports are reported on a trade year basis. All other data are reported using local marketing years.

World Oats Trade
October/September Year, Thousand Metric Tons

	2012/13	2013/14	2014/15	2015/16	2016/17 Jun	2016/17 Jul
TY Exports						
Argentina	2	2	2	5	5	5
Australia	240	270	270	300	300	300
Canada	1,351	1,732	1,729	1,600	1,700	1,700
Chile	41	49	84	75	75	75
European Union	126	291	231	230	200	200
Russia	4	6	14	20	10	10
Ukraine	2	6	46	70	70	70
Others	10	14	8	10	10	10
Subtotal	1,776	2,370	2,384	2,310	2,370	2,370
United States	18	29	23	25	30	30
World Total	1,794	2,399	2,407	2,335	2,400	2,400
TY Imports						
Albania	0	0	3	5	5	5
Algeria	7	12	24	30	25	25
Bosnia and Herzegovina	2	3	4	5	5	5
Canada	9	27	12	10	15	15
China	87	116	162	200	200	200
Colombia	1	2	2	5	5	5
Ecuador	19	21	21	20	20	20
European Union	4	3	4	5	5	5
Japan	51	46	47	50	50	50
Mexico	108	93	86	100	100	100
Norway	36	38	2	10	10	10
Serbia	2	2	2	5	5	5
South Africa	11	19	46	50	50	50
Switzerland	44	51	49	50	50	50
Turkey	0	0	4	5	5	5
Others	6	8	8	5	5	5
Subtotal	387	441	476	555	555	555
Unaccounted	52	92	172	280	245	245
United States	1,355	1,866	1,759	1,500	1,600	1,600
World Total	1,794	2,399	2,407	2,335	2,400	2,400

TY=Trade Year, see Endnotes.

World Oats Production, Consumption, and Stocks
Local Marketing Years, Thousand Metric Tons

	2012/13	2013/14	2014/15	2015/16	2016/17 Jun	2016/17 Jul
Production						
Algeria	110	110	110	110	110	110
Argentina	496	445	525	553	500	500
Australia	1,121	1,255	1,198	1,308	1,200	1,500
Belarus	422	352	522	400	400	400
Brazil	361	380	350	350	350	650
Canada	2,830	3,906	2,979	3,430	3,300	3,200
Chile	680	610	421	470	475	475
China	600	580	600	600	600	600
European Union	7,909	8,380	7,854	7,524	8,175	8,175
Kazakhstan	200	305	226	244	275	275
Mexico	84	91	93	87	90	90
Norway	232	214	236	236	240	240
Russia	4,027	4,932	5,267	4,527	4,500	4,500
Turkey	210	210	210	210	210	210
Ukraine	630	467	610	498	500	500
Others	315	318	296	329	334	334
Subtotal	20,227	22,555	21,497	20,876	21,259	21,759
United States	892	938	1,019	1,300	987	1,112
World Total	21,119	23,493	22,516	22,176	22,246	22,871
Total Consumption						
Algeria	119	118	126	140	135	135
Argentina	500	425	525	550	500	500
Australia	925	950	950	950	900	1,150
Belarus	400	375	500	400	400	400
Brazil	350	375	345	340	350	640
Canada	1,592	1,660	1,673	1,650	1,650	1,650
Chile	600	570	355	375	400	400
China	675	700	750	825	850	850
European Union	7,700	8,075	7,675	7,575	7,800	7,800
Kazakhstan	225	275	225	245	270	270
Mexico	195	185	175	190	190	190
Norway	295	245	245	245	255	255
Russia	4,300	4,900	5,200	4,600	4,500	4,500
Turkey	215	215	215	215	215	215
Ukraine	600	475	600	430	430	430
Others	451	491	471	524	529	529
Subtotal	19,217	20,254	20,050	19,545	19,581	20,121
United States	2,743	2,757	2,424	2,719	2,697	2,697
World Total	21,960	23,011	22,474	22,264	22,278	22,818
Ending Stocks						
Argentina	49	67	65	63	58	58
Australia	60	105	93	151	107	201
Canada	446	1,054	681	871	836	736
Chile	61	45	27	47	47	47
China	139	135	147	122	72	72
European Union	901	894	858	582	762	762
Russia	203	230	289	196	186	186
Others	222	201	192	187	177	187
Subtotal	2,081	2,731	2,352	2,219	2,245	2,249
United States	527	359	780	825	741	848
World Total	2,608	3,090	3,132	3,044	2,986	3,097

Regional Oats Imports, Production, Consumption, and Stocks

Thousand Metric Tons

	2012/13	2013/14	2014/15	2015/16	Jun 2016/17	Jul 2016/17
TY Imports						
North America	1,472	1,986	1,857	1,610	1,715	1,715
South America	26	29	30	30	30	30
European Union - 28	4	3	4	5	5	5
Other Europe	84	94	60	75	75	75
Former Soviet Union - 12	0	2	1	0	0	0
Middle East	0	0	4	5	5	5
North Africa	7	12	24	30	25	25
Sub-Saharan Africa	11	19	46	50	50	50
East Asia	138	162	209	250	250	250
Oceania	0	0	0	0	0	0
Total	1,742	2,307	2,235	2,055	2,155	2,155
Production						
North America	3,806	4,935	4,091	4,817	4,377	4,402
South America	1,577	1,478	1,324	1,414	1,367	1,667
European Union - 28	7,909	8,380	7,854	7,524	8,175	8,175
Other Europe	365	348	369	372	375	375
Former Soviet Union - 12	5,285	6,062	6,631	5,675	5,681	5,681
Middle East	210	210	210	210	210	210
North Africa	166	156	147	166	175	175
Sub-Saharan Africa	60	59	55	55	55	55
East Asia	602	582	602	601	601	601
Oceania	1,139	1,283	1,233	1,342	1,230	1,530
Total	21,119	23,493	22,516	22,176	22,246	22,871
Domestic Consumption						
North America	4,530	4,602	4,272	4,559	4,537	4,537
South America	1,515	1,447	1,285	1,336	1,322	1,612
European Union - 28	7,700	8,075	7,675	7,575	7,800	7,800
Other Europe	474	434	434	447	456	456
Former Soviet Union - 12	5,531	6,031	6,531	5,681	5,606	5,606
Middle East	215	215	215	215	215	215
North Africa	175	164	163	196	200	200
Sub-Saharan Africa	72	95	94	105	105	105
East Asia	730	750	800	875	900	900
Oceania	943	978	985	984	930	1,180
Total	21,885	22,791	22,454	21,973	22,071	22,611
Ending Stocks						
North America	974	1,417	1,467	1,699	1,580	1,587
South America	128	129	105	128	118	128
European Union - 28	901	894	858	582	762	762
Other Europe	27	41	38	38	32	32
Former Soviet Union - 12	332	346	397	296	286	286
Middle East	13	8	6	6	6	6
North Africa	1	1	1	1	1	1
Sub-Saharan Africa	28	11	18	18	18	18
East Asia	144	138	149	125	76	76
Oceania	60	105	93	151	107	201
Total	2,608	3,090	3,132	3,044	2,986	3,097

NOTES: Regional definitions appear on last page of this circular. Imports are reported on a trade year basis. All other data are reported using local marketing years.

World Rye Trade
October/September Year, Thousand Metric Tons

	2012/13	2013/14	2014/15	2015/16	2016/17 Jun	2016/17 Jul
TY Exports						
Belarus	25	5	5	5	5	5
Canada	178	97	89	100	150	150
European Union	122	201	167	160	150	150
Russia	79	83	121	50	100	100
Ukraine	16	59	13	20	10	10
Others	1	1	1	0	0	0
Subtotal	421	446	396	335	415	415
United States	7	6	3	5	5	5
World Total	428	452	399	340	420	420
TY Imports						
European Union	68	96	96	70	100	100
Israel	34	33	18	15	25	25
Japan	27	37	22	15	20	20
Korea, South	12	8	4	10	10	10
Norway	21	16	5	15	20	20
Russia	25	5	5	5	5	5
Switzerland	9	6	6	5	5	5
Others	4	1	6	0	0	0
Subtotal	200	202	162	135	185	185
Unaccounted	7	46	-25	5	35	35
United States	221	204	262	200	200	200
World Total	428	452	399	340	420	420

TY=Trade Year, see Endnotes.

World Rye Production, Consumption, and Stocks
Local Marketing Years, Thousand Metric Tons

	2012/13	2013/14	2014/15	2015/16	2016/17 Jun	2016/17 Jul
Production						
Argentina	40	52	97	61	75	75
Belarus	1,082	648	867	800	800	800
Canada	337	223	218	225	325	325
European Union	8,763	10,151	8,868	7,816	8,160	8,160
Russia	2,132	3,360	3,279	2,084	2,500	2,500
Turkey	370	365	300	350	350	350
Ukraine	676	638	475	394	350	350
Others	146	126	144	121	138	138
Subtotal	13,546	15,563	14,248	11,851	12,698	12,698
United States	166	194	183	292	190	311
World Total	13,712	15,757	14,431	12,143	12,888	13,009
Total Consumption						
Argentina	40	52	97	61	75	75
Australia	40	19	19	22	25	25
Belarus	1,000	650	850	800	850	850
Canada	127	107	134	123	140	140
European Union	8,700	9,650	8,600	8,100	8,200	8,200
Kazakhstan	50	40	65	37	50	50
Norway	26	28	20	27	32	32
Russia	2,000	3,100	3,250	2,175	2,350	2,350
Turkey	375	350	325	350	350	350
Ukraine	625	625	475	400	350	350
Others	132	140	102	96	112	112
Subtotal	13,146	14,766	13,947	12,173	12,540	12,540
United States	387	424	406	513	445	525
World Total	13,533	15,190	14,353	12,686	12,985	13,065
Ending Stocks						
Belarus	167	160	172	167	112	112
Canada	46	44	42	44	79	79
European Union	795	1,204	1,390	1,016	926	926
Kazakhstan	3	8	4	4	4	4
Russia	153	344	264	128	183	183
Turkey	18	33	14	14	14	14
Ukraine	166	128	106	80	70	70
Others	7	4	3	2	1	1
Subtotal	1,355	1,925	1,995	1,455	1,389	1,389
United States	10	7	15	12	19	22
World Total	1,365	1,932	2,010	1,467	1,408	1,411

Regional Rye Imports, Production, Consumption, and Stocks

Thousand Metric Tons

	2012/13	2013/14	2014/15	2015/16	Jun 2016/17	Jul 2016/17
TY Imports						
North America	221	204	262	200	200	200
South America	0	0	0	0	0	0
European Union - 28	68	96	96	70	100	100
Other Europe	32	23	11	20	25	25
Former Soviet Union - 12	27	5	5	5	5	5
Middle East	34	33	24	15	25	25
Sub-Saharan Africa	0	0	0	0	0	0
East Asia	39	45	26	25	30	30
Oceania	0	0	0	0	0	0
Total	421	406	424	335	385	385
Production						
North America	503	417	401	517	515	636
South America	47	59	105	69	83	83
European Union - 28	8,763	10,151	8,868	7,816	8,160	8,160
Other Europe	46	53	52	51	52	52
Former Soviet Union - 12	3,940	4,689	4,682	3,315	3,700	3,700
Middle East	370	365	300	350	350	350
Sub-Saharan Africa	3	3	3	3	3	3
East Asia	0	0	0	0	0	0
Oceania	40	20	20	22	25	25
Total	13,712	15,757	14,431	12,143	12,888	13,009
Domestic Consumption						
North America	514	531	540	636	585	665
South America	47	59	105	69	83	83
European Union - 28	8,700	9,650	8,600	8,100	8,200	8,200
Other Europe	78	77	66	71	77	77
Former Soviet Union - 12	3,675	4,415	4,640	3,412	3,600	3,600
Middle East	409	383	343	365	375	375
Sub-Saharan Africa	2	3	3	3	3	3
East Asia	37	48	27	26	31	31
Oceania	40	19	19	22	25	25
Total	13,502	15,185	14,343	12,704	12,979	13,059
Ending Stocks						
North America	56	51	57	56	98	101
South America	0	0	0	0	0	0
European Union - 28	795	1,204	1,390	1,016	926	926
Other Europe	0	0	0	0	0	0
Former Soviet Union - 12	489	640	546	379	369	369
Middle East	18	33	14	14	14	14
Sub-Saharan Africa	0	0	0	0	0	0
East Asia	7	4	3	2	1	1
Oceania	0	0	0	0	0	0
Total	1,365	1,932	2,010	1,467	1,408	1,411

NOTES: Regional definitions appear on last page of this circular. Imports are reported on a trade year basis. All other data are reported using local marketing years.



HISTORICAL DATA SERIES FOR SELECTED REGIONS AND COUNTRIES

CONTENTS

European Union: Grain Supply and Demand	39
China: Grain Supply and Demand	40
Other Europe: Grain Supply and Demand	41
Former Soviet Union: Grain Supply and Demand.....	42
Wheat Supply and Disappearance: Selected Exporters	46
Corn Supply and Disappearance: Selected Exporters.....	48
Barley Supply and Disappearance: Selected Exporters	50
Sorghum Supply and Disappearance: Selected Exporters	51
U.S. Grains: Supply and Distribution.....	52
Total Wheat and Coarse Grains: Supply and Demand	53
World Wheat and Coarse Grains: Supply and Demand	54
World Corn and Barley: Supply and Demand	55
World Rice: Supply and Demand	56

European Union: Grain Supply and Demand

Wheat and Coarse Grains Millions of Metric Tons/Hectares

	Area Harvested	Yield	Production	Imports	Exports	Feed Dom.	Domestic Consumption	Ending Stocks
Wheat								
2005/06	26.0	5.1	132.9	6.8	15.7	63.0	128.2	24.1
2006/07	24.7	5.1	125.7	5.2	13.9	60.2	126.2	14.8
2007/08	24.9	4.9	120.8	6.8	12.4	52.4	117.2	12.8
2008/09	26.8	5.7	151.9	7.7	25.4	60.5	127.6	19.4
2009/10	26.0	5.4	139.7	5.4	22.3	57.5	125.6	16.6
2010/11	26.0	5.3	136.7	4.6	23.1	52.5	122.8	11.9
2011/12	25.8	5.3	138.2	7.4	16.7	57.5	127.2	13.5
2012/13	26.0	5.2	133.9	5.3	22.8	51.0	119.3	10.7
2013/14	25.9	5.6	144.6	4.0	32.0	49.0	117.3	9.9
2014/15	26.7	5.9	156.8	6.0	35.4	54.0	123.5	13.8
2015/16	26.8	6.0	160.0	6.7	33.0	59.0	128.8	18.7
2016/17	26.9	5.8	156.5	5.5	34.0	59.0	129.3	17.4
Coarse Grains								
2005/06	33.2	4.5	149.7	2.7	4.3	112.4	150.9	22.8
2006/07	32.4	4.3	140.3	8.1	4.5	112.9	150.9	15.7
2007/08	32.7	4.2	138.8	20.3	4.5	121.6	157.2	13.1
2008/09	34.1	4.8	165.2	3.1	5.7	116.1	154.5	21.3
2009/10	33.0	4.8	158.0	2.9	3.0	114.8	152.8	26.3
2010/11	30.2	4.7	143.2	8.5	6.2	116.9	155.0	16.9
2011/12	30.2	5.0	150.1	7.0	6.5	113.2	151.7	15.7
2012/13	31.4	4.6	146.2	11.8	7.4	113.7	153.3	13.1
2013/14	31.5	5.1	159.2	16.3	8.6	122.4	164.4	15.6
2014/15	30.8	5.5	170.8	9.0	14.0	121.3	162.5	18.8
2015/16	30.1	5.0	151.2	13.7	12.1	116.6	157.4	14.3
2016/17	30.2	5.3	159.9	11.4	11.9	119.6	160.3	13.3
Wheat and Coarse Grains								
2005/06	59.2	4.8	282.5	9.4	20.0	175.4	279.1	46.9
2006/07	57.1	4.7	265.9	13.2	18.5	173.1	277.1	30.5
2007/08	57.5	4.5	259.6	27.1	16.9	174.1	274.3	25.9
2008/09	60.9	5.2	317.2	10.8	31.1	176.6	282.1	40.7
2009/10	59.0	5.0	297.7	8.2	25.3	172.3	278.4	42.9
2010/11	56.3	5.0	279.9	13.1	29.3	169.4	277.8	28.8
2011/12	56.1	5.1	288.3	14.3	23.3	170.7	278.9	29.3
2012/13	57.4	4.9	280.1	17.1	30.2	164.7	272.6	23.8
2013/14	57.4	5.3	303.8	20.3	40.7	171.4	281.7	25.5
2014/15	57.5	5.7	327.6	14.9	49.4	175.3	286.0	32.6
2015/16	56.9	5.5	311.3	20.4	45.1	175.6	286.2	33.0
2016/17	57.1	5.5	316.4	16.9	45.9	178.6	289.6	30.8

China: Grain Supply and Demand

Wheat and Coarse Grains Millions of Metric Tons/Hectares

	Area Harvested	Yield	Production	Imports	Exports	Feed Dom.	Domestic Consumption	Ending Stocks
Wheat								
2005/06	22.8	4.3	97.4	1.1	1.4	3.5	101.5	34.5
2006/07	23.6	4.6	108.5	0.4	2.8	4.0	102.0	38.6
2007/08	23.7	4.6	109.3	0.0	2.8	8.0	106.0	39.1
2008/09	23.6	4.8	112.5	0.5	0.7	8.0	105.5	45.8
2009/10	24.3	4.7	115.1	1.4	0.9	10.0	107.0	54.4
2010/11	24.3	4.7	115.2	0.9	0.9	13.0	110.5	59.1
2011/12	24.3	4.8	117.4	2.9	1.0	24.0	122.5	55.9
2012/13	24.3	5.0	121.0	3.0	1.0	25.0	125.0	54.0
2013/14	24.1	5.1	121.9	6.8	0.9	16.0	116.5	65.3
2014/15	24.1	5.2	126.2	1.9	0.8	16.0	116.5	76.1
2015/16	24.1	5.4	130.2	3.3	0.8	10.5	112.0	96.8
2016/17	24.3	5.3	130.0	3.5	0.8	15.0	117.0	112.5
Coarse Grains								
2005/06	28.8	5.1	147.8	2.3	3.8	103.5	147.1	36.9
2006/07	31.1	5.1	159.0	1.2	5.5	105.0	153.5	38.0
2007/08	31.9	5.0	159.2	1.2	0.9	106.7	157.9	39.5
2008/09	32.2	5.4	172.4	1.7	0.2	109.1	161.2	52.2
2009/10	33.4	5.1	169.8	3.8	0.2	119.1	173.3	52.3
2010/11	34.6	5.3	183.8	2.7	0.2	128.8	188.4	50.1
2011/12	35.5	5.6	198.6	7.9	0.1	132.0	196.2	60.4
2012/13	37.1	5.7	212.2	5.6	0.1	146.1	209.7	68.4
2013/14	38.3	5.9	225.4	12.4	0.0	157.8	223.5	82.7
2014/15	39.2	5.7	222.8	25.7	0.0	158.8	229.1	102.0
2015/16	40.2	5.8	231.8	17.1	0.0	167.0	239.0	111.8
2016/17	38.1	5.9	225.7	12.2	0.0	169.9	245.2	104.5
Wheat and Coarse Grains								
2005/06	51.6	4.8	245.3	3.4	5.2	107.0	248.6	71.4
2006/07	54.7	4.9	267.4	1.5	8.2	109.0	255.5	76.6
2007/08	55.6	4.8	268.5	1.2	3.7	114.7	263.9	78.6
2008/09	55.8	5.1	284.9	2.1	0.9	117.1	266.7	98.0
2009/10	57.6	4.9	284.9	5.2	1.1	129.1	280.3	106.7
2010/11	58.9	5.1	299.0	3.6	1.1	141.8	298.9	109.2
2011/12	59.8	5.3	316.0	10.9	1.1	156.0	318.7	116.3
2012/13	61.3	5.4	333.2	8.6	1.1	171.1	334.7	122.3
2013/14	62.4	5.6	347.3	19.2	0.9	173.8	340.0	147.9
2014/15	63.3	5.5	349.0	27.6	0.8	174.8	345.6	178.1
2015/16	64.3	5.6	362.0	20.4	0.8	177.5	351.0	208.6
2016/17	62.4	5.7	355.7	15.7	0.8	184.9	362.2	217.0

Other Europe: Grain Supply and Demand

Wheat and Coarse Grains Millions of Metric Tons/Hectares

	Area Harvested	Yield	Production	Imports	Exports	Feed Dom.	Domestic Consumpti	Ending Stocks
Wheat								
2005/06	1.0	3.8	3.8	1.4	0.2	0.9	5.1	1.1
2006/07	1.0	3.6	3.5	1.5	0.3	0.7	4.6	1.2
2007/08	1.0	3.8	3.7	1.9	0.5	1.0	4.8	1.5
2008/09	0.9	4.4	4.0	1.7	0.4	1.2	5.1	1.7
2009/10	1.0	3.9	3.8	1.7	0.5	1.0	4.9	1.7
2010/11	0.9	3.7	3.2	1.7	0.6	0.8	4.7	1.3
2011/12	0.9	4.2	3.6	1.9	0.5	1.0	4.9	1.4
2012/13	0.9	4.0	3.4	1.6	0.7	1.0	4.7	1.1
2013/14	0.9	4.5	4.1	1.9	1.3	1.1	4.8	0.9
2014/15	1.0	4.0	3.9	1.8	0.7	1.1	4.9	1.1
2015/16	0.9	4.5	4.1	1.9	1.0	1.2	4.9	1.2
2016/17	1.0	4.7	4.6	1.8	1.1	1.4	5.1	1.3
Coarse Grains								
2005/06	2.1	4.8	10.1	0.6	1.3	8.5	9.7	1.3
2006/07	2.0	4.9	9.8	0.8	0.9	8.5	9.6	1.3
2007/08	2.0	3.4	6.9	0.9	0.1	6.8	7.9	1.1
2008/09	2.1	4.6	9.7	0.6	1.5	7.6	8.7	1.1
2009/10	2.0	4.9	9.7	0.7	1.4	7.5	8.7	1.4
2010/11	2.0	5.0	10.0	0.7	2.0	7.3	8.7	1.5
2011/12	2.1	4.6	9.5	0.8	2.3	7.0	8.4	1.0
2012/13	2.1	3.2	6.6	0.7	0.6	5.9	7.1	0.6
2013/14	2.0	4.4	8.8	0.9	1.9	6.3	7.7	0.8
2014/15	1.9	5.7	10.6	0.8	3.1	6.7	8.0	1.1
2015/16	1.8	4.9	8.9	0.8	1.8	6.9	8.3	0.8
2016/17	1.9	5.3	10.0	0.9	2.3	6.9	8.3	1.2
Wheat and Coarse Grains								
2005/06	3.1	4.5	13.9	2.0	1.4	9.4	14.8	2.4
2006/07	3.0	4.5	13.3	2.3	1.2	9.2	14.2	2.5
2007/08	3.0	3.5	10.6	2.7	0.6	7.8	12.6	2.6
2008/09	3.0	4.6	13.7	2.3	1.9	8.8	13.8	2.8
2009/10	3.0	4.5	13.5	2.4	1.9	8.5	13.7	3.2
2010/11	2.9	4.6	13.2	2.4	2.6	8.1	13.4	2.7
2011/12	2.9	4.5	13.1	2.7	2.8	8.1	13.2	2.5
2012/13	2.9	3.4	10.0	2.4	1.3	7.0	11.8	1.7
2013/14	2.9	4.5	12.9	2.7	3.1	7.4	12.5	1.7
2014/15	2.8	5.1	14.6	2.5	3.7	7.8	12.9	2.2
2015/16	2.7	4.8	13.0	2.8	2.8	8.1	13.2	2.0
2016/17	2.8	5.1	14.6	2.7	3.3	8.3	13.4	2.5

Former Soviet Union: Grain Supply and Demand
Wheat and Coarse Grains Millions of Metric Tons/Hectares

	Area Harvested	Yield	Production	Imports	Exports	Feed Dom.	Domestic Consumption	Ending Stocks
Wheat								
2010/11	45.8	1.8	81.0	5.5	13.9	24.4	75.6	23.1
2011/12	49.7	2.3	115.0	8.0	39.7	28.4	80.0	26.4
2012/13	44.0	1.8	77.8	7.2	25.4	21.6	71.7	14.3
2013/14	47.7	2.2	103.9	7.5	37.2	22.7	72.8	15.7
2014/15	46.7	2.4	112.7	7.7	40.2	24.7	75.9	20.1
2015/16	49.0	2.4	117.7	7.6	50.4	25.8	77.9	17.1
2016/17	48.0	2.5	118.9	7.3	45.6	26.3	78.8	18.8
Coarse Grains								
2010/11	21.9	2.2	47.5	1.1	8.8	28.4	41.8	5.5
2011/12	27.0	2.9	78.6	1.0	24.7	38.6	54.4	6.1
2012/13	27.5	2.5	68.2	0.7	19.9	35.6	50.2	5.0
2013/14	29.4	3.0	87.8	0.8	30.8	40.0	55.7	7.0
2014/15	30.2	3.0	91.6	0.8	33.9	42.1	58.1	7.4
2015/16	28.2	2.9	82.8	0.7	30.4	40.6	55.7	4.8
2016/17	28.6	3.1	88.0	0.7	31.2	41.8	57.2	5.2

Former Soviet Union: Grain Supply and Demand (Wheat)

Millions of Tons/Hectares

Country Mktg Year	Area Harvested	Yield	Production	MY Imports	MY Exports	Feed and Residual	Total Consumption	Ending Stocks
Former Soviet Union - 12								
Kazakhstan								
2013/14	13.0	1.1	13.9	0.0	8.1	2.0	6.8	2.0
2014/15	11.9	1.1	13.0	0.6	5.5	2.0	6.8	3.2
2015/16	11.6	1.2	13.7	0.1	7.5	2.1	6.9	2.7
2016/17	11.0	1.2	13.0	0.1	7.0	2.1	6.9	1.8
Russia								
2013/14	23.4	2.2	52.1	0.9	18.6	12.5	34.1	5.2
2014/15	23.6	2.5	59.1	0.3	22.8	13.0	35.5	6.3
2015/16	25.6	2.4	61.0	0.8	25.0	14.0	37.0	6.1
2016/17	26.0	2.5	65.0	0.5	25.5	14.5	37.5	8.6
Ukraine								
2013/14	6.6	3.4	22.3	0.1	9.8	3.4	11.5	3.7
2014/15	6.3	3.9	24.8	0.0	11.3	4.0	12.0	5.2
2015/16	7.1	3.8	27.3	0.1	17.0	4.5	12.5	3.0
2016/17	6.3	4.0	25.0	0.1	12.5	4.5	12.5	3.1
Uzbekistan								
2013/14	1.4	4.9	6.8	2.2	0.3	1.9	8.4	1.9
2014/15	1.4	5.1	7.2	2.2	0.2	2.2	8.9	2.2
2015/16	1.4	5.1	7.2	2.7	0.2	2.3	9.4	2.5
2016/17	1.4	5.1	7.2	2.5	0.2	2.2	9.5	2.5
Other Former Soviet Union - 12								
2013/14	3.4	2.6	8.8	4.3	0.4	2.9	12.0	3.0
2014/15	3.4	2.6	8.8	4.5	0.4	3.5	12.7	3.2
2015/16	3.4	2.5	8.5	4.0	0.7	2.9	12.2	2.8
2016/17	3.3	2.6	8.7	4.2	0.4	3.0	12.4	2.8
Total Former Soviet Union - 12								
2013/14	47.7	2.2	103.9	7.5	37.2	22.7	72.8	15.7
2014/15	46.7	2.4	112.7	7.7	40.2	24.7	75.9	20.1
2015/16	49.0	2.4	117.7	7.6	50.4	25.8	77.9	17.1
2016/17	48.0	2.5	118.9	7.3	45.6	26.3	78.8	18.8

Former Soviet Union: Grain Supply and Demand (Barley)

Millions of Tons/Hectares

Country Mktg Year	Area Harvested	Yield	Production	MY Imports	MY Exports	Feed and Residual	Total Consumption	Ending Stocks
Former Soviet Union - 12								
Kazakhstan								
2013/14	1.8	1.4	2.5	0.0	0.4	1.7	2.0	0.3
2014/15	1.9	1.3	2.4	0.0	0.5	1.7	2.0	0.2
2015/16	2.0	1.3	2.7	0.0	0.8	1.7	2.0	0.1
2016/17	2.1	1.3	2.7	0.0	0.7	1.8	2.1	0.1
Russia								
2013/14	8.0	1.9	15.4	0.2	2.7	8.3	12.7	0.9
2014/15	8.8	2.3	20.0	0.0	5.3	9.2	14.1	1.5
2015/16	8.0	2.1	17.1	0.1	4.3	8.9	13.6	0.8
2016/17	8.1	2.2	17.8	0.1	4.0	9.0	13.8	0.8
Ukraine								
2013/14	3.2	2.3	7.6	0.0	2.5	3.5	5.0	1.0
2014/15	3.2	3.0	9.5	0.0	4.5	3.2	4.7	1.3
2015/16	3.0	2.9	8.8	0.0	4.3	3.2	4.7	1.0
2016/17	3.0	3.0	9.1	0.0	4.2	3.3	4.8	1.1
Uzbekistan								
2013/14	0.1	3.2	0.2	0.0	0.0	0.2	0.3	0.0
2014/15	0.1	3.2	0.2	0.1	0.0	0.2	0.3	0.0
2015/16	0.1	3.2	0.2	0.1	0.0	0.3	0.3	0.0
2016/17	0.1	3.2	0.2	0.1	0.0	0.3	0.3	0.0
Other Former Soviet Union - 12								
2013/14	1.3	2.6	3.4	0.1	0.0	2.7	3.5	0.4
2014/15	1.3	2.7	3.4	0.2	0.1	2.8	3.6	0.3
2015/16	1.3	2.7	3.6	0.1	0.1	2.9	3.7	0.3
2016/17	1.4	2.7	3.8	0.1	0.1	3.0	3.8	0.3
Total Former Soviet Union - 12								
2013/14	14.5	2.0	29.2	0.3	5.6	16.4	23.5	2.6
2014/15	15.3	2.3	35.6	0.3	10.3	17.1	24.7	3.4
2015/16	14.5	2.2	32.3	0.3	9.5	16.9	24.3	2.2
2016/17	14.7	2.3	33.6	0.3	9.0	17.3	24.8	2.2

Former Soviet Union: Grain Supply and Demand (Corn)

Millions of Tons/Hectares

Country Mktg Year	Area Harvested	Yield	Production	MY Imports	MY Exports	Feed and Residual	Total Consumption	Ending Stocks
Former Soviet Union - 12								
Kazakhstan								
2013/14	0.1	5.3	0.6	0.0	0.0	0.5	0.6	0.0
2014/15	0.1	5.3	0.7	0.0	0.0	0.5	0.6	0.1
2015/16	0.1	5.3	0.7	0.0	0.1	0.5	0.6	0.2
2016/17	0.2	5.3	0.8	0.0	0.1	0.6	0.7	0.1
Russia								
2013/14	2.3	5.0	11.6	0.1	4.2	6.6	7.5	0.3
2014/15	2.6	4.4	11.3	0.0	3.2	7.2	8.1	0.3
2015/16	2.7	4.9	13.2	0.1	4.4	8.0	8.9	0.3
2016/17	2.8	5.0	14.0	0.1	4.5	8.6	9.5	0.3
Ukraine								
2013/14	4.8	6.4	30.9	0.1	20.0	8.3	9.7	2.4
2014/15	4.6	6.2	28.5	0.0	19.7	8.0	9.4	1.8
2015/16	4.1	5.7	23.3	0.1	16.0	7.0	8.4	0.8
2016/17	4.2	6.2	26.0	0.1	17.0	7.3	8.7	1.2
Uzbekistan								
2013/14	0.0	3.4	0.1	0.0	0.0	0.1	0.1	0.0
2014/15	0.0	3.4	0.1	0.0	0.0	0.1	0.2	0.0
2015/16	0.0	3.4	0.1	0.0	0.0	0.1	0.1	0.0
2016/17	0.0	3.4	0.1	0.0	0.0	0.1	0.1	0.0
Other Former Soviet Union - 12								
2013/14	1.0	3.8	3.7	0.3	0.6	2.9	3.2	0.6
2014/15	0.9	3.7	3.2	0.4	0.3	2.9	3.2	0.8
2015/16	0.9	3.2	3.1	0.3	0.2	3.0	3.3	0.7
2016/17	0.9	3.7	3.2	0.3	0.3	2.9	3.2	0.6
Total Former Soviet Union - 12								
2013/14	8.3	5.7	46.9	0.4	24.8	18.4	21.1	3.4
2014/15	8.3	5.3	43.8	0.5	23.2	18.8	21.5	3.0
2015/16	7.9	5.1	40.4	0.4	20.6	18.7	21.4	1.9
2016/17	8.1	5.5	44.2	0.4	22.0	19.5	22.3	2.2

Wheat Supply and Disappearance: Selected Exporters
Million Metric Tons/Hectares

Country Mktg Year	Area Harvested	Yield	Production	MY Imports	MY Exports	Feed and Residual	Total Consumption	Ending Stocks
Wheat Competitors								
Argentina								
2012/13	3.6	2.6	9.3	0.0	3.6	0.3	6.2	0.3
2013/14	3.5	3.0	10.5	0.0	2.3	0.1	6.1	2.5
2014/15	5.0	2.8	14.0	0.0	5.3	0.3	6.4	4.9
2015/16	3.8	3.0	11.3	0.0	8.8	0.1	6.2	1.2
2016/17	5.0	3.0	15.0	0.0	9.0	0.1	6.3	0.9
Australia								
2012/13	13.0	1.8	22.9	0.1	18.6	3.4	6.7	4.7
2013/14	12.6	2.0	25.3	0.2	18.6	3.6	7.0	4.6
2014/15	12.4	1.9	23.9	0.2	16.6	3.8	7.2	4.8
2015/16	12.8	1.9	24.5	0.2	16.4	3.8	7.2	5.9
2016/17	12.8	2.0	25.5	0.2	17.5	4.0	7.5	6.6
Canada								
2012/13	9.5	2.9	27.2	0.5	19.0	4.3	9.6	5.1
2013/14	10.4	3.6	37.5	0.4	23.3	4.2	9.4	10.4
2014/15	9.5	3.1	29.4	0.5	24.2	3.7	9.1	7.1
2015/16	9.6	2.9	27.6	0.5	22.0	3.4	8.6	4.6
2016/17	9.3	3.1	29.0	0.5	20.5	3.6	8.8	4.7
European Union								
2012/13	26.0	5.2	133.9	5.3	22.8	51.0	119.3	10.7
2013/14	25.9	5.6	144.6	4.0	32.0	49.0	117.3	9.9
2014/15	26.7	5.9	156.8	6.0	35.4	54.0	123.5	13.8
2015/16	26.8	6.0	160.0	6.7	33.0	59.0	128.8	18.7
2016/17	26.9	5.8	156.5	5.5	34.0	59.0	129.3	17.4
Kazakhstan								
2012/13	12.4	0.8	9.8	0.0	6.3	2.0	6.8	2.9
2013/14	13.0	1.1	13.9	0.0	8.1	2.0	6.8	2.0
2014/15	11.9	1.1	13.0	0.6	5.5	2.0	6.8	3.2
2015/16	11.6	1.2	13.7	0.1	7.5	2.1	6.9	2.7
2016/17	11.0	1.2	13.0	0.1	7.0	2.1	6.9	1.8
Russia								
2012/13	21.3	1.8	37.7	1.2	11.3	11.9	33.6	4.9
2013/14	23.4	2.2	52.1	0.9	18.6	12.5	34.1	5.2
2014/15	23.6	2.5	59.1	0.3	22.8	13.0	35.5	6.3
2015/16	25.6	2.4	61.0	0.8	25.0	14.0	37.0	6.1
2016/17	26.0	2.5	65.0	0.5	25.5	14.5	37.5	8.6

Wheat Supply and Disappearance: Selected Exporters (Continued)

Million Metric Tons/Hectares

Country Mktg Year	Area Harvested	Yield	Production	MY Imports	MY Exports	Feed and Residual	Total Consumption	Ending Stocks
Ukraine								
2012/13	5.6	2.8	15.8	0.0	7.2	3.1	11.4	2.6
2013/14	6.6	3.4	22.3	0.1	9.8	3.4	11.5	3.7
2014/15	6.3	3.9	24.8	0.0	11.3	4.0	12.0	5.2
2015/16	7.1	3.8	27.3	0.1	17.0	4.5	12.5	3.0
2016/17	6.3	4.0	25.0	0.1	12.5	4.5	12.5	3.1
Total Wheat Competitors								
2012/13	91.4	2.8	256.6	7.1	88.7	76.0	193.5	31.2
2013/14	95.4	3.2	306.2	5.5	112.6	74.8	192.1	38.2
2014/15	95.4	3.4	321.0	7.6	121.1	80.8	200.4	45.3
2015/16	97.2	3.3	325.5	8.3	129.7	86.9	207.2	42.2
2016/17	97.3	3.4	329.0	6.8	126.0	87.8	208.8	43.2

Corn Supply and Disappearance: Selected Exporters
Million Metric Tons/Hectares

Country Mktg Year	Area Harvested	Yield	Production	MY Imports	MY Exports	Feed and Residual	Total Consumption	Ending Stocks
Argentina								
2008/09	2.5	6.2	15.5	0.0	10.3	4.5	6.4	0.9
2009/10	3.0	8.3	25.0	0.0	16.5	5.0	6.9	2.5
2010/11	3.8	6.7	25.2	0.0	16.3	5.3	7.3	4.0
2011/12	3.6	5.8	21.0	0.0	17.1	4.8	7.0	0.9
2012/13	4.0	6.8	27.0	0.0	18.7	5.3	7.9	1.3
2013/14	3.4	7.6	26.0	0.0	17.1	5.8	8.8	1.4
2014/15	3.5	8.2	28.7	0.0	18.9	6.0	9.3	1.9
2015/16	3.5	8.0	28.0	0.0	19.0	6.0	9.3	1.6
2016/17	4.2	8.1	34.0	0.0	23.0	6.6	10.4	2.2
Brazil								
2008/09	14.1	3.6	51.0	1.1	7.1	38.5	45.5	10.1
2009/10	12.9	4.3	56.1	0.4	11.6	41.5	48.5	6.5
2010/11	13.8	4.2	57.4	0.8	8.4	43.0	50.0	6.3
2011/12	15.2	4.8	73.0	0.8	24.3	44.0	51.5	4.2
2012/13	15.8	5.2	81.5	0.9	24.9	44.5	52.5	9.2
2013/14	15.8	5.1	80.0	0.8	21.0	46.0	55.0	14.0
2014/15	15.8	5.4	85.0	0.3	34.5	48.0	57.0	7.8
2015/16	15.8	4.4	70.0	1.5	18.5	47.0	55.5	5.3
2016/17	15.8	5.1	80.0	0.6	22.0	49.0	58.0	5.9
China								
2008/09	29.9	5.6	165.9	0.0	0.2	108.0	153.0	51.2
2009/10	31.2	5.3	164.0	1.3	0.2	118.0	165.0	51.3
2010/11	32.5	5.5	177.2	1.0	0.1	128.0	180.0	49.4
2011/12	33.5	5.7	192.8	5.2	0.1	131.0	188.0	59.3
2012/13	35.0	5.9	205.6	2.7	0.1	144.0	200.0	67.6
2013/14	36.3	6.0	218.5	3.3	0.0	150.0	208.0	81.3
2014/15	37.1	5.8	215.6	5.5	0.0	140.0	202.0	100.5
2015/16	38.1	5.9	224.6	3.1	0.0	153.5	217.5	110.6
2016/17	36.0	6.1	218.0	1.0	0.0	159.0	226.0	103.6
South Africa								
2008/09	2.9	4.3	12.6	0.0	1.7	4.7	10.3	2.0
2009/10	3.3	4.1	13.4	0.0	2.1	4.9	10.6	2.8
2010/11	2.9	3.8	10.9	0.4	2.4	5.0	10.7	1.0
2011/12	3.1	4.1	12.8	0.0	1.8	5.0	10.7	1.3
2012/13	3.2	3.8	12.4	0.1	2.1	5.1	11.0	0.7
2013/14	3.1	4.9	14.9	0.1	2.0	5.5	11.5	2.2

Corn Supply and Disappearance: Selected Exporters (Continued)

Million Metric Tons/Hectares

Country Mktg Year	Area Harvested	Yield	Production	MY Imports	MY Exports	Feed and Residual	Total Consumption	Ending Stocks
2014/15	3.0	3.5	10.6	2.0	0.7	6.1	11.7	2.4
2015/16	1.9	3.4	6.5	3.5	0.7	5.5	11.0	0.7
2016/17	3.2	4.1	13.0	0.5	1.5	5.6	11.3	1.4
Total Corn Competitors								
2008/09	49.4	5.0	245.0	1.2	19.3	155.7	215.2	64.2
2009/10	50.4	5.1	258.5	1.7	30.3	169.4	231.0	63.0
2010/11	52.9	5.1	270.8	2.2	27.3	181.3	248.0	60.7
2011/12	55.5	5.4	299.5	6.0	43.4	184.8	257.2	65.7
2012/13	58.1	5.6	326.5	3.7	45.8	198.9	271.4	78.7
2013/14	58.6	5.8	339.4	4.1	40.0	207.3	283.3	98.9
2014/15	59.4	5.7	340.0	7.8	54.1	200.1	280.0	112.6
2015/16	59.3	5.5	329.1	8.1	38.2	212.0	293.3	118.3
2016/17	59.2	5.8	345.0	2.1	46.5	220.2	305.7	113.2

Barley Supply and Disappearance: Selected Exporters
Million Metric Tons/Hectares

Country Mktg Year	Area Harvested	Yield	Production	MY Imports	MY Exports	Feed and Residual	Total Consumption	Ending Stocks
Australia								
2008/09	5.0	1.6	8.0	0.0	3.2	2.9	4.0	2.4
2009/10	4.4	1.8	7.9	0.0	3.9	3.3	4.5	1.9
2010/11	3.7	2.2	8.0	0.0	4.7	3.0	4.2	1.0
2011/12	3.7	2.2	8.2	0.0	5.4	2.1	3.3	0.5
2012/13	3.6	2.1	7.5	0.0	4.5	1.8	3.0	0.5
2013/14	3.8	2.4	9.2	0.0	6.2	1.5	2.8	0.7
2014/15	4.1	2.1	8.6	0.0	5.2	1.8	3.1	1.0
2015/16	4.1	2.1	8.6	0.0	5.5	1.7	3.0	1.1
2016/17	4.1	2.2	9.0	0.0	6.0	1.6	2.9	1.2
Canada								
2008/09	3.5	3.4	11.8	0.0	1.5	7.6	8.9	3.0
2009/10	2.9	3.3	9.5	0.0	1.3	7.5	8.7	2.5
2010/11	2.4	3.2	7.6	0.0	1.2	6.3	7.5	1.5
2011/12	2.4	3.3	7.9	0.0	1.3	5.7	6.9	1.2
2012/13	2.8	2.9	8.0	0.0	1.4	5.7	6.8	1.0
2013/14	2.7	3.9	10.2	0.0	1.6	6.5	7.7	2.0
2014/15	2.1	3.3	7.1	0.1	1.5	5.2	6.5	1.2
2015/16	2.4	3.5	8.2	0.2	1.4	5.4	6.6	1.6
2016/17	2.4	3.4	8.1	0.1	1.4	5.5	6.8	1.6
European Union								
2008/09	14.6	4.5	65.8	0.3	3.6	41.7	57.3	11.0
2009/10	14.0	4.5	62.4	0.1	1.1	41.7	56.8	15.6
2010/11	12.5	4.3	53.7	0.2	4.9	41.3	56.6	7.9
2011/12	11.9	4.3	51.9	0.5	3.0	35.8	51.2	6.1
2012/13	12.5	4.4	54.9	0.1	5.0	35.5	51.0	5.0
2013/14	12.4	4.8	59.7	0.0	5.7	38.0	53.4	5.6
2014/15	12.4	4.9	60.6	0.1	9.5	35.5	50.9	5.9
2015/16	12.2	5.0	61.3	0.3	10.1	36.5	51.9	5.5
2016/17	12.4	5.1	62.8	0.1	9.0	38.5	53.9	5.5

Sorghum Supply and Disappearance: Selected Exporters
Million Metric Tons/Hectares

Country Mktg Year	Area Harvested	Yield	Production	MY Imports	MY Exports	Feed and Residual	Total Consumption	Ending Stocks
Argentina								
2008/09	0.5	3.7	1.7	0.0	1.1	1.0	1.1	0.2
2009/10	0.8	4.8	3.6	0.0	1.8	1.7	1.9	0.2
2010/11	1.0	4.4	4.4	0.0	1.7	1.7	1.9	0.9
2011/12	1.0	4.2	4.2	0.0	3.1	1.7	1.9	0.2
2012/13	1.1	4.5	4.7	0.0	1.8	2.0	2.3	0.8
2013/14	1.0	4.4	4.4	0.0	1.3	2.3	2.7	1.2
2014/15	0.8	4.5	3.5	0.0	0.9	2.4	2.8	1.0
2015/16	0.8	4.5	3.4	0.0	0.7	2.4	2.8	0.8
2016/17	0.9	4.6	3.9	0.0	1.3	2.6	3.0	0.5
Australia								
2008/09	0.8	3.5	2.7	0.0	1.0	1.8	1.8	0.7
2009/10	0.5	3.0	1.5	0.0	0.3	1.2	1.2	0.7
2010/11	0.6	3.1	1.9	0.0	0.9	1.4	1.4	0.4
2011/12	0.7	3.4	2.2	0.0	1.3	1.1	1.1	0.2
2012/13	0.6	3.4	2.2	0.0	1.2	1.1	1.1	0.2
2013/14	0.5	2.4	1.3	0.0	0.4	0.9	0.9	0.2
2014/15	0.7	3.0	2.2	0.0	1.6	0.5	0.5	0.2
2015/16	0.7	3.0	2.0	0.0	1.0	1.1	1.1	0.2
2016/17	0.7	3.1	2.2	0.0	1.0	1.1	1.1	0.3

U.S. Grains Supply and Distribution: Wheat, Corn, Sorghum, Barley, Oats, Rye, and Rice

Thousand Metric Tons/Hectares

	Area Harvested	Yield	Rough Production	Production	Imports	TY Imports	Exports	TY Exports	Feed Dom. Consumption	Domestic Consumption	Ending Stocks
Wheat											
2014/15	18,771	3	nr	55,147	4,068	3,987	23,249	22,752	3,326	31,554	20,477
2015/16	19,058	3	nr	55,840	3,120	3,100	21,143	21,750	3,600	31,587	26,707
2016/17	17,844	3	nr	61,532	3,266	3,250	25,174	25,000	8,165	36,252	30,079
Corn											
2014/15	33,644	11	nr	361,091	804	809	47,359	46,773	135,045	301,854	43,974
2015/16	32,678	11	nr	345,486	1,524	1,500	48,262	48,500	132,086	299,522	43,200
2016/17	35,026	11	nr	369,333	1,016	1,000	52,072	52,000	139,706	308,625	52,852
Sorghum											
2014/15	2,590	4	nr	10,988	10	27	8,965	9,249	2,048	2,429	468
2015/16	3,177	5	nr	15,158	127	110	8,382	7,800	2,794	6,224	1,147
2016/17	2,613	4	nr	10,668	25	25	5,588	5,500	2,540	5,079	1,173
Barley											
2014/15	1,011	4	nr	3,953	513	430	312	292	935	4,234	1,711
2015/16	1,258	4	nr	4,666	403	420	235	275	993	4,314	2,231
2016/17	1,043	4	nr	3,979	435	400	327	300	1,089	4,419	1,899
Oats											
2014/15	419	2	nr	1,019	1,852	1,759	26	23	1,306	2,424	780
2015/16	516	3	nr	1,300	1,491	1,500	27	25	1,599	2,719	825
2016/17	471	2	nr	1,112	1,637	1,600	29	30	1,565	2,697	848
Rye											
2014/15	104	2	nr	183	237	262	6	3	164	406	15
2015/16	146	2	nr	292	223	200	5	5	267	513	12
2016/17	179	2	nr	311	230	200	6	5	277	525	22
Rice, Milled											
2014/15	1,187	8	10,079	7,106	783	758	3,207	3,472	nr	4,155	1,552
2015/16	1,042	8	8,724	6,107	762	765	3,270	3,450	nr	3,853	1,298
2016/17	1,291	9	11,113	7,779	762	775	3,651	3,650	nr	4,382	1,806

Notes: Wheat Trade Year (TY) statistics are on July/June years. Barley, corn, sorghum, rye and oats Trade Year (TY) statistics are on Oct/Sept years. Rice Trade Year (TY) statistics are for the subsequent calendar year; 'Imports' and 'Exports' columns contain data on the local marketing year: wheat, barley, oats and rye are June/May; corn and sorghum are Sept/Aug; rice is Aug/July.

Total Wheat and Coarse Grains: Supply and Demand

Millions of Metric Tons/Hectares

	Area Harvested	Yield	Production	TY Exports	Feed Dom.	Domestic Consumpti	Ending Stocks
Wheat and Coarse Grains							
1987/88	544.3	2.4	1,285.9	202.2	656.6	1,329.8	422.8
1988/89	541.9	2.2	1,218.1	203.3	619.5	1,301.8	339.1
1989/90	548.2	2.4	1,327.4	208.9	644.5	1,346.2	320.3
1990/91	545.6	2.6	1,417.5	190.1	669.8	1,369.6	368.3
1991/92	543.3	2.5	1,355.5	207.5	653.5	1,365.9	357.9
1992/93	545.9	2.6	1,431.6	205.2	664.1	1,388.2	398.5
1993/94	536.0	2.5	1,356.5	188.2	657.1	1,389.0	366.0
1994/95	534.1	2.6	1,393.0	200.1	670.5	1,395.7	363.2
1995/96	527.2	2.5	1,338.9	187.5	641.8	1,381.8	320.3
1996/97	545.7	2.7	1,490.1	198.3	674.6	1,441.6	368.7
1997/98	535.2	2.8	1,490.6	190.4	685.6	1,443.2	416.1
1998/99	520.2	2.8	1,481.3	198.7	685.4	1,448.4	449.0
1999/00	506.2	2.9	1,465.6	214.0	690.4	1,469.9	444.1
2000/01	509.3	2.8	1,446.8	204.9	700.4	1,472.2	418.7
2001/02	511.7	2.9	1,480.1	208.3	713.6	1,495.7	403.2
2002/03	504.7	2.9	1,445.0	209.2	711.6	1,506.4	341.8
2003/04	511.2	2.9	1,473.0	205.8	717.9	1,535.7	279.1
2004/05	514.8	3.2	1,643.0	214.4	756.2	1,586.3	335.7
2005/06	517.5	3.1	1,600.1	222.5	758.1	1,617.3	318.5
2006/07	519.1	3.1	1,584.9	229.9	749.6	1,630.5	273.0
2007/08	534.7	3.2	1,692.8	244.7	764.4	1,675.8	289.9
2008/09	539.5	3.3	1,792.0	253.6	774.2	1,722.2	359.8
2009/10	533.6	3.4	1,804.1	254.1	782.2	1,767.6	396.2
2010/11	523.5	3.3	1,747.8	250.1	773.6	1,784.0	360.0
2011/12	537.8	3.4	1,853.4	287.1	807.8	1,853.3	360.1
2012/13	532.1	3.4	1,794.7	279.5	807.5	1,813.7	341.1
2013/14	540.7	3.7	1,995.6	327.3	861.4	1,930.5	406.3
2014/15	546.1	3.7	2,033.0	334.9	883.6	1,976.6	462.7
2015/16	544.4	3.6	1,982.7	346.5	897.0	1,958.3	487.1
2016/17	542.5	3.8	2,040.9	337.7	929.1	2,032.3	495.8

Notes: Wheat and coarse grains trade data are on July/June years through 1975/76. From 1976/77 to the present, coarse grains data are on an Oct/Sept trade year.

World Wheat and Coarse Grains: Supply and Demand

Millions of Metric Tons/Hectares

	Area Harvested	Yield	Production	TY Exports	Feed Dom.	Domestic Consumpti	Ending Stocks
Wheat							
1994/95	213.4	2.5	523.1	101.5	103.0	541.7	164.7
1995/96	216.7	2.5	537.5	99.2	96.9	545.6	156.6
1996/97	227.1	2.6	581.3	104.0	101.4	572.6	165.3
1997/98	226.4	2.7	610.2	104.5	106.2	576.5	199.0
1998/99	219.2	2.7	590.5	102.0	109.4	579.0	210.5
1999/00	212.7	2.8	587.5	111.9	104.6	587.6	210.3
2000/01	215.6	2.7	583.3	102.1	111.2	587.1	206.5
2001/02	214.5	2.7	583.9	107.9	112.0	586.6	203.7
2002/03	213.9	2.7	569.7	106.5	116.1	603.9	169.5
2003/04	208.0	2.7	555.3	103.5	101.7	588.9	135.9
2004/05	215.8	2.9	626.8	113.2	110.7	606.3	156.4
2005/06	217.5	2.8	618.8	114.1	117.7	621.8	153.4
2006/07	212.3	2.8	596.7	115.3	113.1	616.5	133.6
2007/08	217.1	2.8	612.6	116.0	104.8	617.5	128.7
2008/09	224.1	3.1	683.7	143.2	124.4	643.2	169.2
2009/10	225.6	3.0	687.0	135.3	122.3	653.0	203.2
2010/11	216.9	3.0	649.3	134.1	116.8	653.9	198.7
2011/12	220.9	3.2	696.9	153.7	148.7	697.7	197.9
2012/13	215.8	3.1	658.3	147.3	138.2	679.1	177.1
2013/14	219.6	3.3	715.0	162.5	126.6	697.9	194.2
2014/15	221.5	3.3	727.9	161.5	130.9	704.6	217.4
2015/16	224.7	3.3	734.6	169.4	134.3	707.5	244.5
2016/17	220.1	3.4	738.5	167.7	144.4	729.3	253.7
Coarse Grains							
1994/95	320.8	2.7	869.8	98.6	567.6	854.0	198.5
1995/96	310.5	2.6	801.4	88.3	544.9	836.2	163.7
1996/97	318.6	2.9	908.7	94.3	573.2	869.0	203.5
1997/98	308.8	2.9	880.4	85.8	579.4	866.7	217.1
1998/99	301.0	3.0	890.8	96.7	575.9	869.4	238.6
1999/00	293.5	3.0	878.1	102.1	585.8	882.3	233.8
2000/01	293.7	2.9	863.5	102.8	589.2	885.1	212.3
2001/02	297.2	3.0	896.3	100.4	601.5	909.0	199.5
2002/03	290.9	3.0	875.3	102.7	595.5	902.5	172.3
2003/04	303.3	3.0	917.7	102.3	616.2	946.8	143.1
2004/05	299.0	3.4	1,016.2	101.2	645.4	980.0	179.4
2005/06	300.0	3.3	981.3	108.4	640.4	995.6	165.1
2006/07	306.8	3.2	988.2	114.5	636.5	1,013.9	139.4
2007/08	317.6	3.4	1,080.2	128.7	659.6	1,058.3	161.2
2008/09	315.4	3.5	1,108.3	110.4	649.7	1,079.0	190.6
2009/10	308.0	3.6	1,117.0	118.8	659.9	1,114.7	193.0
2010/11	306.6	3.6	1,098.5	116.0	656.8	1,130.1	161.4
2011/12	316.9	3.6	1,156.5	133.4	659.1	1,155.6	162.3
2012/13	316.3	3.6	1,136.4	132.2	669.3	1,134.7	164.0
2013/14	321.1	4.0	1,280.7	164.9	734.8	1,232.6	212.1
2014/15	324.7	4.0	1,305.2	173.4	752.8	1,272.0	245.3
2015/16	319.7	3.9	1,248.1	177.1	762.7	1,250.8	242.6
2016/17	322.4	4.0	1,302.4	170.0	784.7	1,302.9	242.1

Notes: Wheat and coarse grains trade data are on July/June years through 1975/76. From 1976/77 to the present, coarse grains data are on an Oct/Sept trade year.

World Corn and Barley: Supply and Demand

Millions of Metric Tons/Hectares

	Area Harvested	Yield	Production	TY Exports	Feed Dom.	Domestic Consumption	Ending Stocks
Corn							
1994/95	135.2	4.1	559.6	71.9	371.6	535.7	153.3
1995/96	135.0	3.8	516.7	64.8	365.2	536.8	133.3
1996/97	141.5	4.2	592.9	66.6	387.8	559.9	166.3
1997/98	136.2	4.2	574.1	63.1	400.6	573.3	167.2
1998/99	138.9	4.4	605.8	68.7	404.4	581.6	191.4
1999/00	138.9	4.4	608.1	72.0	422.5	605.1	194.4
2000/01	137.1	4.3	591.7	75.9	427.3	610.8	175.3
2001/02	137.1	4.4	601.8	72.7	436.3	625.6	151.5
2002/03	137.8	4.4	603.8	76.8	433.4	628.5	126.8
2003/04	141.7	4.4	627.6	79.0	445.7	649.9	104.6
2004/05	145.4	4.9	717.1	76.0	475.9	690.6	131.1
2005/06	145.4	4.8	700.9	82.5	479.5	708.5	123.5
2006/07	150.5	4.8	716.6	91.3	480.3	731.3	108.8
2007/08	160.3	5.0	795.7	98.2	501.3	776.7	127.9
2008/09	158.8	5.0	800.1	83.6	481.9	784.4	143.5
2009/10	158.4	5.2	825.2	92.7	492.7	827.8	140.9
2010/11	164.6	5.1	835.9	91.7	503.5	853.2	123.6
2011/12	172.1	5.2	889.8	103.7	508.5	885.0	128.3
2012/13	177.6	4.9	869.7	100.5	518.9	864.8	133.3
2013/14	180.5	5.5	991.4	130.4	572.0	948.9	175.7
2014/15	179.9	5.6	1,013.6	128.0	585.6	980.8	208.5
2015/16	176.7	5.4	959.8	135.9	598.2	961.4	206.9
2016/17	178.8	5.7	1,010.7	131.5	618.5	1,009.3	208.4
Barley							
1994/95	72.2	2.2	160.7	15.3	120.9	165.6	30.0
1995/96	66.4	2.1	141.2	13.4	107.8	150.7	20.5
1996/97	64.3	2.4	153.2	17.9	106.3	149.5	24.1
1997/98	63.8	2.4	153.9	12.8	104.1	145.8	32.2
1998/99	56.7	2.4	136.0	17.8	99.5	139.3	29.0
1999/00	52.1	2.4	127.4	17.8	94.0	132.5	23.9
2000/01	52.9	2.5	133.0	16.3	94.6	134.3	22.6
2001/02	55.7	2.6	143.4	17.2	95.5	136.8	29.2
2002/03	54.7	2.5	134.3	16.3	94.7	135.9	27.6
2003/04	58.4	2.4	142.7	14.8	103.1	146.8	23.5
2004/05	57.4	2.7	152.1	17.0	100.0	142.5	33.1
2005/06	55.2	2.5	136.2	17.4	97.3	141.0	28.3
2006/07	56.3	2.4	136.8	14.6	98.4	143.6	21.5
2007/08	55.7	2.4	132.7	18.5	91.0	133.7	20.6
2008/09	55.0	2.8	155.0	18.2	100.4	143.8	31.7
2009/10	54.2	2.8	150.9	17.3	101.4	145.2	37.4
2010/11	47.1	2.6	123.0	15.2	91.3	136.1	24.3
2011/12	49.2	2.7	133.3	21.4	91.7	135.0	22.7
2012/13	49.9	2.6	128.8	22.2	88.6	131.1	20.4
2013/14	50.7	2.8	144.3	23.8	97.2	140.8	23.9
2014/15	49.8	2.8	141.8	30.1	97.4	141.7	24.0
2015/16	50.1	3.0	148.5	28.4	99.9	147.4	25.1
2016/17	49.3	2.9	144.2	27.8	100.1	146.4	22.9

Notes: Coarse grains trade data are on July/June years through 1975/76. From 1976/77 to the present, coarse grains data are on an Oct/Sept trade year.

World Rice: Supply and Demand

Millions of Metric Tons/Hectares

	Area Harvested	Yield	Rough Productio n	Productio n	TY Exports	Domestic Consumpti	Ending Stocks
Rice, Milled							
1987/88	141.4	3.3	464.8	315.1	11.4	313.1	105.3
1988/89	146.6	3.3	490.8	332.1	14.0	325.7	111.7
1989/90	147.8	3.5	510.4	345.3	11.7	336.3	120.6
1990/91	147.0	3.5	519.4	351.4	12.3	345.3	126.7
1991/92	147.5	3.5	522.8	353.2	14.4	353.2	126.7
1992/93	146.5	3.6	524.2	354.0	14.9	357.5	123.2
1993/94	145.3	3.6	526.1	354.7	16.6	358.9	119.0
1994/95	147.3	3.7	540.0	364.1	20.8	365.5	117.6
1995/96	148.4	3.7	547.3	368.8	19.7	368.3	118.1
1996/97	150.1	3.8	565.3	381.4	18.9	379.2	120.3
1997/98	151.7	3.8	575.2	387.4	27.6	380.0	127.7
1998/99	153.1	3.8	587.0	394.9	24.8	388.6	134.0
1999/00	155.9	3.9	608.8	409.3	22.8	400.2	143.1
2000/01	152.4	3.9	594.1	399.3	24.3	395.6	146.7
2001/02	151.3	3.9	594.3	399.5	27.9	413.3	132.9
2002/03	146.9	3.8	563.0	378.2	27.6	408.1	103.0
2003/04	149.3	3.9	585.4	392.5	27.3	413.8	81.7
2004/05	151.8	3.9	596.4	400.8	28.9	408.5	74.0
2005/06	153.9	4.0	622.2	417.8	29.0	415.4	76.5
2006/07	154.5	4.0	625.0	420.1	31.8	421.2	75.4
2007/08	154.8	4.2	643.5	433.6	29.5	428.1	80.8
2008/09	158.2	4.2	668.7	449.3	29.4	437.6	92.6
2009/10	155.8	4.2	656.2	440.7	31.8	438.4	95.0
2010/11	158.4	4.2	672.1	450.4	36.5	445.3	100.0
2011/12	160.7	4.3	697.2	467.6	40.0	460.8	106.8
2012/13	158.5	4.4	704.5	472.5	39.5	465.5	113.8
2013/14	161.8	4.4	713.4	478.4	44.2	478.4	113.8
2014/15	161.0	4.4	713.7	478.7	42.8	478.0	114.5
2015/16	158.5	4.4	701.6	470.6	41.3	478.5	106.7
2016/17	161.2	4.5	717.5	481.2	40.5	480.6	107.3

Notes: Stocks, exports and consumption are expressed on a milled basis in marketing years.

ENDNOTES TO GRAIN: WORLD MARKETS AND TRADE

REGIONAL TABLES

North America: Canada, Mexico, the United States.

Central America: Belize, Costa Rica, El Salvador, Guatemala, Honduras, Nicaragua, Panama.

Caribbean: Anguilla, Antigua and Barbuda, Aruba, Bahamas, Barbados, Bermuda, British Virgin Islands, Cayman Islands, Cuba, Dominica, Dominican Republic, French West Indies, Grenada, Guadeloupe, Haiti, Jamaica and Dep, Leeward-Windward Islands, Martinique, Montserrat, Netherlands Antilles, Puerto Rico, Kitts and Nevis, St. Lucia, St. Vincent and the Grenadines, Trinidad and Tobago, Turks and Caicos Islands, Virgin Islands of the U.S.

South America: Argentina, Bolivia, Brazil, Chile, Colombia, Ecuador, Falkland Islands (Islas Malvinas), French Guiana, Guyana, Paraguay, Peru, Suriname, Uruguay, Venezuela.

EU: Austria, Belgium/Luxembourg, Bulgaria, Croatia, Cyprus, Czech Republic, Denmark, Estonia, Finland, France, Germany, Greece, Hungary, Ireland, Italy, Latvia, Lithuania, Malta, Netherlands, Poland, Portugal, Romania, Slovakia, Slovenia, Spain, Sweden, United Kingdom.

Other Europe: Albania, Azores, Bosnia and Herzegovina, Former Yugoslavia, Gibraltar, Iceland, Macedonia, Montenegro, Norway, Serbia, Switzerland.

Former Soviet Union: Armenia, Azerbaijan, Belarus, Georgia, Kazakhstan, Kyrgyzstan, Moldova, Russia, Tajikistan, Turkmenistan, Ukraine, Uzbekistan.

Middle East: Bahrain, Iran, Iraq, Israel, Jordan, Kuwait, Lebanon, Oman, Qatar, Saudi Arabia, Syria, Turkey, United Arab Emirates, Yemen.

North Africa: Algeria, Egypt, Libya, Morocco, Tunisia.

Sub-Saharan Africa: all African countries except North Africa.

East Asia: China, Hong Kong, Japan, South Korea, North Korea, Macau, Mongolia, Taiwan.

South Asia: Afghanistan, Bangladesh, Bhutan, India, Nepal, Pakistan, Sri Lanka, Maldives.

Southeast Asia: Brunei, Burma, Cambodia, Indonesia, Laos, Malaysia, Philippines, Singapore, Thailand, Vietnam.

Oceania: Australia, Fiji, New Zealand, Papua New Guinea.

OTHER NOTES

Local Marketing Years (LMY): LMY refers to the 12-month period at the onset of the main harvest, when the crop is marketed (i.e., consumed, traded, or stored). The year first listed begins a country's LMY for that commodity (2015/16 starts in 2015); except for summer grains in certain Southern Hemisphere countries and for rice in selected countries, where the second year begins the LMY (2015/16 starts in 2016). Key exporter LMY's are:

Wheat	Corn	Barley	Sorghum
Argentina (Dec/Nov)	Argentina (Mar/Feb)	Australia (Nov/Oct)	Argentina (Mar/Feb)
Australia (Oct/Sep)	Brazil (Mar/Feb)	Canada (Aug/Jul)	Australia (Mar/Feb)
Canada (Aug/Jul)	China (Oct/Sep)	European Union (Jul/Jun)	United States (Sep/Aug)
China (Jul/Jun)	South Africa (May/Apr)	Russia (Jul/Jun)	
European Union (Jul/Jun)	United States (Sep/Aug)	Ukraine (Jul/Jun)	
India (Apr/Mar)		United States (Jun/May)	
Kazakhstan (Jul/Jun)			
Russia (Jul/Jun)			
Turkey (Jun/May)			
Ukraine (Jul/Jun)			
United States (Jun/May)			

For a complete list of local marketing years, please see the FAS website (<http://www.fas.usda.gov/psdonline/psdAvailability.aspx>).

Stocks: Unless otherwise stated, stock data are based on an aggregate of differing local marketing years and should not be construed as representing world stock levels at a fixed point in time.

Consumption: World totals for consumption reflect total utilization, including food, seed, industrial, feed, and waste; as well as differences in local marketing year imports and local marketing year exports. Consumption statistics for regions and individual countries, however, reflect food, seed, industrial, feed, and waste only.

Trade: All PSD tables are balanced on the different local marketing years. All trade tables contain Trade Year (TY) data which puts all countries on a uniform, 12-month period for analytical comparisons: wheat is July/June; coarse grains, corn, barley, sorghum, oats, and rye are Oct/Sept; and rice is calendar year.

EU Consolidation: The trade figures starting from 1999/00 represent the European Union (Croatia plus the former EU-27) and exclude all intra-trade. For the years 1960/61 through 1998/99, figures are the EU-15 and also exclude all intra-trade. EU-15 member states' data for grains are no longer maintained in the official USDA database. Data for the individual NMS-10, plus Bulgaria, Romania, and Croatia, exists only prior to 1999/00.

Statistics: (1) Wheat trade statistics include wheat, flour, and selected pasta products on a grain equivalent basis. (2) Rice trade statistics include rough, brown, milled, and broken on a milled equivalent basis. (3) Coarse grains statistics include corn, barley, sorghum, oats, rye, millet, and mixed grains but exclude trade in barley malt, millet, and mixed grains.

Unaccounted: This term includes grain in transit, reporting discrepancies in some countries, and trade to countries outside the USDA database.

The Global Commodity Analysis Division, Office of Global Analysis, Foreign Agricultural Service, USDA, Washington, DC 20250, prepared this circular. Information is gathered from official statistics of foreign governments and other foreign source materials, reports of U.S. agricultural attachés and Foreign Service officers, office research, and related information. Further information may be obtained by writing the Division or telephoning (202) 720-3448.

Note: The previous report in this series was Grain: World Markets and Trade June 2016. For further details on world grain production, please see World Agricultural Production July 2016.

This circular is available in its entirety on the Internet via the Foreign Agricultural Service Home Page. The address is: <http://www.fas.usda.gov>

Questions may be directed to the following staff:

Teresa McKeivier	(202) 690-1151	Teresa.McKeivier@fas.usda.gov	Wheat
Daniel Archibald	(202) 720-9432	Dan.Archibald@fas.usda.gov	Wheat
Rachel Trego	(202) 720-1073	Rachel.Trego@fas.usda.gov	Rice
Kyle Bonsu	(202) 260-8370	Kyle.Bonsu@fas.usda.gov	Rice
Yoonhee Macke	(202) 690-4199	Yoonhee.Macke@fas.usda.gov	Coarse Grains
Andrew Sowell	(202) 720-0262	Andrew.Sowell@fas.usda.gov	Coarse Grains
Megan Davidow	(202) 720-9438	Megan.Davidow@fas.usda.gov	Coarse Grains