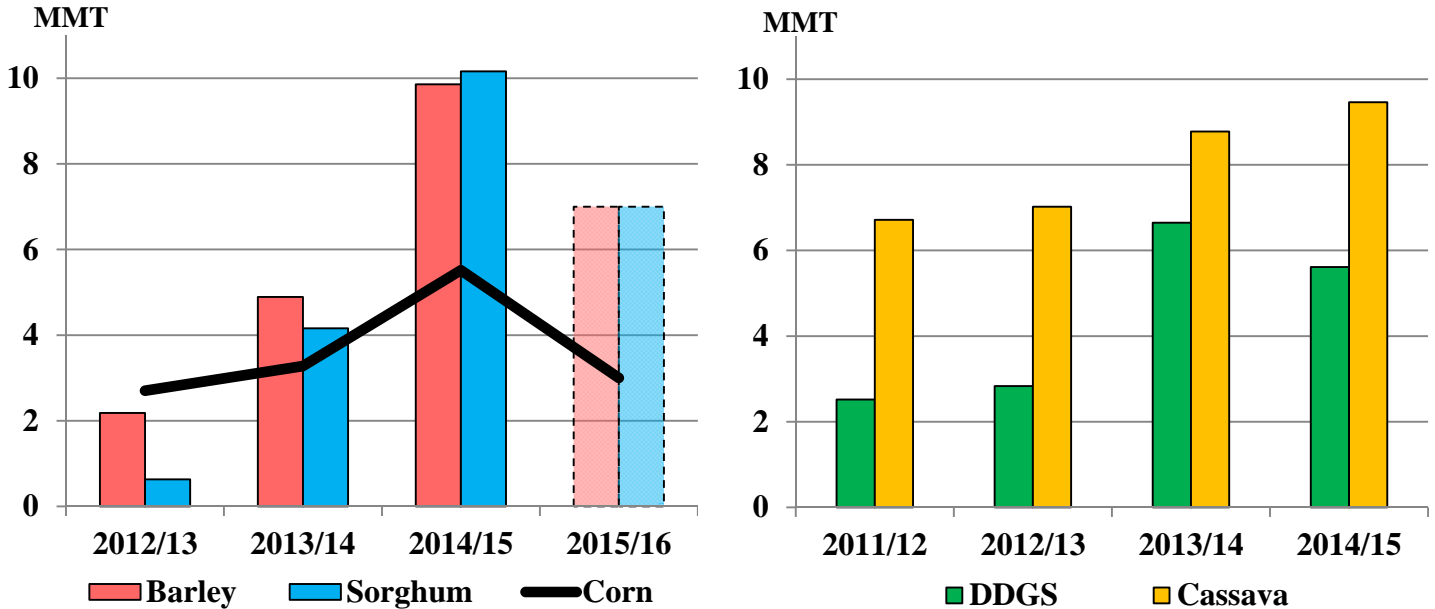




Grain: World Markets and Trade

China Cutting Back on Imports of Feedstuffs



China's total imports of corn, barley, and sorghum are expected to drop from the record 2014/15 (Oct-Sep) level. Sorghum imports for 2015/16 are slashed 4.0 million tons this month, down over 30 percent year-over-year. As the United States is the primary supplier of sorghum to China, U.S. exports for 2015/16 are down 3.5 million tons this month. The Government of China's recent support price changes for the Northeast region are putting downward pressure on corn prices, encouraging higher domestic corn consumption. This action is resulting in less demand for alternative feeds such as sorghum, barley, distiller's dried grains (DDGS), and cassava. With U.S. sorghum sales to China dwindling, its export price premium over corn has fallen from nearly \$100/ton in April to less than \$20. The discount for sorghum relative to corn in the internal U.S. market sharply increases prospects for domestic use.

Chinese feed millers have been purchasing other feedstuffs over the last 3 years, displacing corn. Beginning with 2013/14, China's corn feed and residual consumption is revised down 28.0 million tons (at the same time food, seed, and industrial (FSI) consumption has been raised 4.0 million). As a result, China's ending stocks jump almost 24 million tons. The year-to-year increase for 2015/16 corn feed usage is 10.0 million tons, representing a larger proportion of total feed grain disappearance.

For email subscription, click here to register: <https://public.govdelivery.com/accounts/USDAFAS/subscriber/new>

TABLE OF CONTENTS

World Markets and Trade: Commentary and Current Data	
Wheat	4
Rice	9
Coarse Grains.....	14
Historical Data Series for Selected Regions and Countries	35
Endnotes to Grain: World Markets and Trade	54

The Foreign Agricultural Service (FAS) updates its production, supply and distribution (PSD) database for cotton, oilseeds, and grains at 12:00 p.m. on the day the *World Agricultural Supply and Demand Estimates* (WASDE) report is released. This circular is released by 12:15 p.m.

To download the tables in the publication, go to Production, Supply and Distribution Database (PSD Online): (<http://apps.fas.usda.gov/psdonline/psdHome.aspx>), scroll down to Reports, and Click the plus sign [+] next to Grains.

FAS Reports and Databases:

Current *World Markets and Trade* and *World Agricultural Production* Reports:

<http://apps.fas.usda.gov/psdonline/psdDataPublications.aspx>

Archives *World Markets and Trade* and *World Agricultural Production* Reports:

<http://usda.mannlib.cornell.edu/MannUsda/viewTaxonomy.do?taxonomyID=7>

Production, Supply and Distribution Database (PSD Online):

<http://apps.fas.usda.gov/psdonline/psdHome.aspx>

Global Agricultural Trade System (U.S. Exports and Imports):

<http://apps.fas.usda.gov/gats/default.aspx>

Export Sales Report:

<http://apps.fas.usda.gov/esrquery/>

Global Agricultural Information Network (Agricultural Attaché Reports):

<http://gain.fas.usda.gov/Pages/Default.aspx>

Other USDA Reports:

World Agricultural Supply and Demand Estimates (WASDE):

<http://www.usda.gov/oce/commodity/wasde/>

Economic Research Service:

<http://www.ers.usda.gov/topics/crops>

National Agricultural Statistics Service:

<http://www.nass.usda.gov/Publications/>

All Grain Summary Comparison
Million Metric Tons

Marketing Year	Wheat			Rice, Milled			Corn			
	2013/14	2014/15	2015/16	2013/14	2014/15	2015/16	2013/14	2014/15	2015/16	
Production										
United States	(Jun-May)	58.1	55.1	55.8	6.1	7.1	6.1	351.3	361.1	346.8
Other		657.0	670.0	677.2	472.3	471.2	467.4	640.1	647.7	628.1
World Total		715.1	725.1	733.0	478.4	478.3	473.5	991.4	1,008.8	974.9
Domestic Consumption										
United States	(Jun-May)	34.3	31.5	33.2	4.0	4.1	4.0	293.0	301.9	301.1
Other		656.8	670.0	681.6	474.2	476.2	480.2	649.3	659.5	674.3
World Total		691.1	701.5	714.8	478.2	480.3	484.2	942.3	961.4	975.4
Ending Stocks										
United States	(Jun-May)	16.1	20.5	24.8	1.0	1.6	1.3	31.3	44.0	44.7
Other		177.5	191.2	202.5	106.6	102.1	89.7	143.6	164.2	167.2
World Total		193.6	211.7	227.3	107.6	103.7	91.0	174.9	208.2	211.9
TY Imports										
United States	(Jun-May)	4.8	4.0	3.4	0.8	0.8	0.8	0.7	0.8	0.8
Other		155.4	154.3	154.7	40.2	39.0	38.9	124.4	120.4	122.9
World Total		160.2	158.3	158.1	41.0	39.8	39.7	125.1	121.2	123.7
TY Exports										
United States	(Jun-May)	31.5	22.8	22.0	3.0	3.5	3.3	50.7	46.8	46.0
Other		130.9	138.5	138.9	40.3	39.0	38.6	79.5	85.5	82.0
World Total		162.4	161.3	160.9	43.3	42.5	41.9	130.2	132.3	128.0

Note: Consumption in this table has not been adjusted for differences in marketing year imports and exports and therefore differs from global totals shown elsewhere. Marketing years for U.S. grains are: Wheat (Jun-May), Rice (Aug-Jul), Corn (Sep-Aug). 'Marketing Year' column is germane for U.S. wheat only.

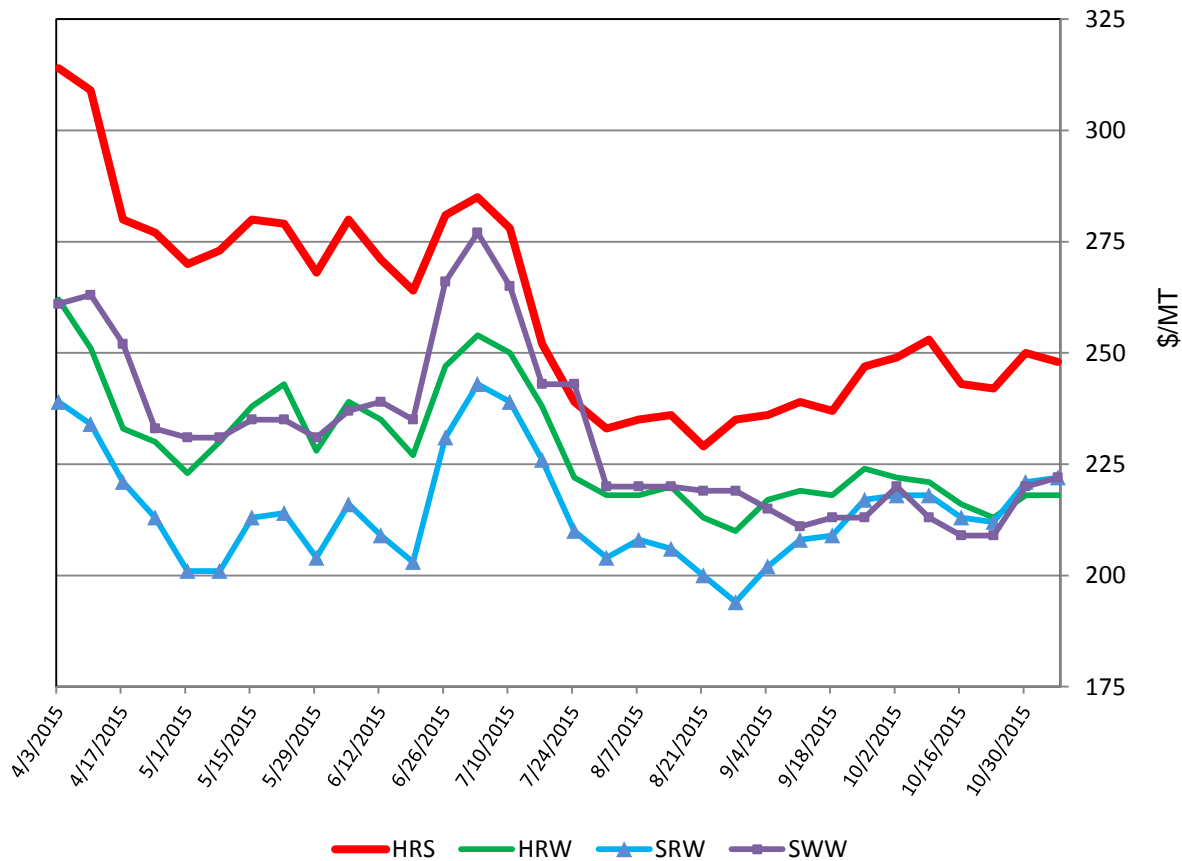
WHEAT: WORLD MARKETS AND TRADE

OVERVIEW

Global production in 2015/16 is raised to a new record as larger crops in the EU more than offset lower production in Australia and Russia. Global trade is raised slightly. Exports are up in Brazil, Canada, and the EU, but cut in Australia and the United States. The season-average farm price forecast is unchanged from last month.

U.S. PRICES:

U.S. Weekly FOB Export Bids



Domestic: Prices for all U.S. wheat classes changed slightly in the last month. Hard Red Spring (HRS) and Hard Red Winter (HRW) were down \$5 to \$248/ton and \$3 to \$218/ton, respectively. In an unusual development, HRW prices dropped below Soft Red Winter (SRW) and Soft White Wheat (SWW). SRW prices rose \$4 to \$222/ton and SWW prices jumped \$9 to \$222/ton. It is becoming a challenge to source preferred qualities in SRW and SWW for export.

TRADE CHANGES IN 2015/16

Selected Exporters

- **Australia** is cut 1.0 million tons to 17.5 million on tighter exportable supplies due to a smaller forecast crop.
- **Brazil** is up 500,000 tons to 1.5 million on projected higher feed-quality wheat exports.
- **Canada** is raised 1.0 million tons to 20.5 million on the strong pace of trade to date.
- **European Union** is up 500,000 tons to 33.5 million on higher production and large exportable supplies. The export pace is expected to pick up during the second half of the year.
- **India** is boosted 500,000 tons to 800,000 on the strong pace of trade to date.
- **United States** is down 1.0 million tons to 22.0 million, a 44-year low, based on weak shipments and slow sales.

Selected Importers

- **Brazil** is down 400,000 tons to 6.3 million based on lower domestic demand and continued currency weakness.
- **China** is cut 500,000 tons to 2.0 million based on the Government's tightening controls over the Tariff Rate Quota (TRQ) because of surplus domestic supplies.
- **Ethiopia** is boosted 500,000 tons to a record 1.6 million on a large government tender. The Government intends to use this wheat to meet consumer demand, address emergency food needs in drought stricken areas, and replenish reserves.
- **India** is cut 500,000 tons to 300,000 because the Government raised the import duty from 10 to 25 percent, dampening import prospects.
- **Thailand** is up 400,000 tons to 3.2 million on the fast pace of trade to date, particularly feed-quality wheat.

World Wheat, Flour, and Products Trade
July/June Year, Thousand Metric Tons

	2011/12	2012/13	2013/14	2014/15	2015/16 Oct	2015/16 Nov
TY Exports						
Argentina	11,951	7,450	1,675	4,200	5,500	5,500
Australia	23,031	21,269	18,339	16,575	18,500	17,500
Brazil	1,860	1,753	81	1,688	1,000	1,500
Canada	17,603	18,584	22,157	24,832	19,500	20,500
European Union	16,728	22,786	32,033	35,401	33,000	33,500
Kazakhstan	11,069	6,801	8,000	5,507	6,500	6,500
Mexico	790	729	1,322	1,104	1,100	1,100
Russia	21,627	11,289	18,568	22,800	23,500	23,500
Turkey	3,678	3,583	4,293	4,136	4,000	4,000
Ukraine	5,436	7,190	9,755	11,269	15,000	15,000
Others	11,850	18,040	14,642	11,081	9,892	10,292
Subtotal	125,623	119,474	130,865	138,593	137,492	138,892
United States	28,142	27,734	31,518	22,752	23,000	22,000
World Total	153,765	147,208	162,383	161,345	160,492	160,892
TY Imports						
Afghanistan	2,200	1,600	2,050	2,000	2,000	2,000
Algeria	6,500	6,484	7,484	7,257	7,700	7,700
Bangladesh	2,039	2,725	3,354	3,804	3,600	3,600
Brazil	7,053	7,547	7,061	5,869	6,700	6,300
China	2,933	2,960	6,773	1,926	2,500	2,000
Egypt	11,650	8,300	10,170	11,063	11,500	11,500
European Union	7,362	5,276	3,974	5,973	6,000	6,000
Indonesia	6,457	7,146	7,392	7,478	7,800	7,800
Iran	2,400	5,600	6,600	5,006	4,500	4,500
Iraq	3,784	3,948	3,246	2,253	3,200	3,200
Japan	6,354	6,598	6,123	5,878	5,800	5,800
Korea, South	5,188	5,439	4,288	3,942	4,200	4,200
Mexico	5,020	3,823	4,636	4,446	4,400	4,400
Morocco	3,671	3,825	3,892	4,073	2,800	2,800
Nigeria	3,903	4,138	4,580	4,244	4,400	4,400
Peru	1,585	1,683	2,078	1,907	1,800	1,800
Philippines	4,075	3,645	3,482	5,099	4,800	4,800
Saudi Arabia	2,904	1,921	3,429	3,487	3,800	3,800
Sudan	2,360	1,793	2,664	2,632	2,800	2,800
Thailand	2,646	1,845	1,693	3,489	2,800	3,200
Tunisia	1,473	1,523	1,634	1,461	2,000	2,000
Turkey	4,413	3,312	4,154	5,960	3,800	3,800
Uzbekistan	2,698	1,863	2,224	2,230	2,200	2,200
Vietnam	2,711	1,671	2,158	2,296	2,400	2,600
Yemen	2,685	3,149	3,425	3,245	3,300	3,300
Others	44,807	43,469	46,861	47,326	48,111	48,261
Subtotal	148,871	141,283	155,425	154,344	154,911	154,761
Unaccounted	1,857	2,449	2,173	3,014	2,231	2,781
United States	3,037	3,476	4,785	3,987	3,350	3,350
World Total	153,765	147,208	162,383	161,345	160,492	160,892

TY=Trade Year, see Endnotes.

World Wheat Production, Consumption, and Stocks
Local Marketing Years, Thousand Metric Tons

	2011/12	2012/13	2013/14	2014/15	2015/16 Oct	2015/16 Nov
Production						
Argentina	15,500	9,300	10,500	12,500	10,500	10,500
Australia	29,905	22,856	25,303	23,666	27,000	26,000
Canada	25,288	27,205	37,530	29,420	26,000	26,000
China	117,400	121,023	121,930	126,170	130,000	130,000
Egypt	8,400	8,500	8,250	8,300	8,360	8,100
European Union	138,182	133,949	144,428	156,466	155,263	157,274
India	86,874	94,882	93,506	95,850	88,940	88,940
Iran	12,400	13,800	14,500	13,000	14,000	14,000
Kazakhstan	22,732	9,841	13,941	12,996	14,000	14,000
Morocco	5,800	3,870	7,000	5,100	8,000	8,000
Pakistan	25,000	23,300	24,000	25,500	25,000	25,000
Russia	56,240	37,720	52,091	59,080	61,000	60,500
Turkey	18,800	16,000	18,750	15,250	19,500	19,500
Ukraine	22,324	15,761	22,278	24,750	27,000	27,000
Uzbekistan	6,300	6,700	6,800	7,150	7,200	7,200
Others	50,668	52,697	56,195	54,777	55,183	55,130
Subtotal	641,813	597,404	657,002	669,975	676,946	677,144
United States	54,244	61,298	58,105	55,147	55,840	55,840
World Total	696,057	658,702	715,107	725,122	732,786	732,984
Total Consumption						
Algeria	8,950	9,450	9,850	10,050	10,250	10,250
Brazil	11,200	10,900	11,400	10,700	11,200	10,600
Canada	9,852	9,530	9,407	9,115	9,000	9,000
China	122,500	125,000	116,500	118,500	116,500	118,000
Egypt	18,600	18,700	18,500	19,100	19,600	19,600
European Union	127,234	119,250	117,300	123,500	125,850	126,750
India	81,408	83,824	93,848	93,130	94,540	93,940
Indonesia	6,250	6,950	7,165	7,365	7,650	7,650
Iran	15,200	16,000	17,000	17,500	18,000	18,000
Morocco	8,800	8,300	9,000	9,000	9,800	9,800
Pakistan	23,100	23,900	24,100	24,500	24,600	24,600
Russia	38,000	33,550	34,100	35,500	37,000	36,500
Turkey	18,100	17,650	17,750	17,500	18,000	18,000
Ukraine	14,950	11,400	11,500	12,000	12,700	12,500
Uzbekistan	7,800	8,000	8,400	8,900	9,100	9,100
Others	145,443	146,981	150,995	153,625	156,670	157,345
Subtotal	665,560	641,442	664,365	675,515	683,232	684,196
United States	31,962	37,768	34,287	31,530	33,177	33,177
World Total	697,522	679,210	698,652	707,045	716,409	717,373
Ending Stocks						
Australia	7,051	4,663	4,557	4,273	5,003	4,998
China	55,946	53,960	65,274	74,067	89,567	87,067
European Union	13,522	10,711	9,780	13,318	15,480	16,342
India	19,950	24,200	17,830	17,200	11,900	11,900
Iran	825	5,086	7,221	7,821	7,321	7,321
Morocco	3,305	2,472	4,185	4,120	4,870	4,870
Russia	10,899	4,952	5,175	6,282	7,132	7,132
Others	65,959	51,578	63,528	64,110	63,782	62,879
Subtotal	177,457	157,622	177,550	191,191	205,055	202,509
United States	20,211	19,538	16,065	20,501	23,433	24,794
World Total	197,668	177,160	193,615	211,692	228,488	227,303

Regional Wheat Imports, Production, Consumption, and Stocks

Thousand Metric Tons

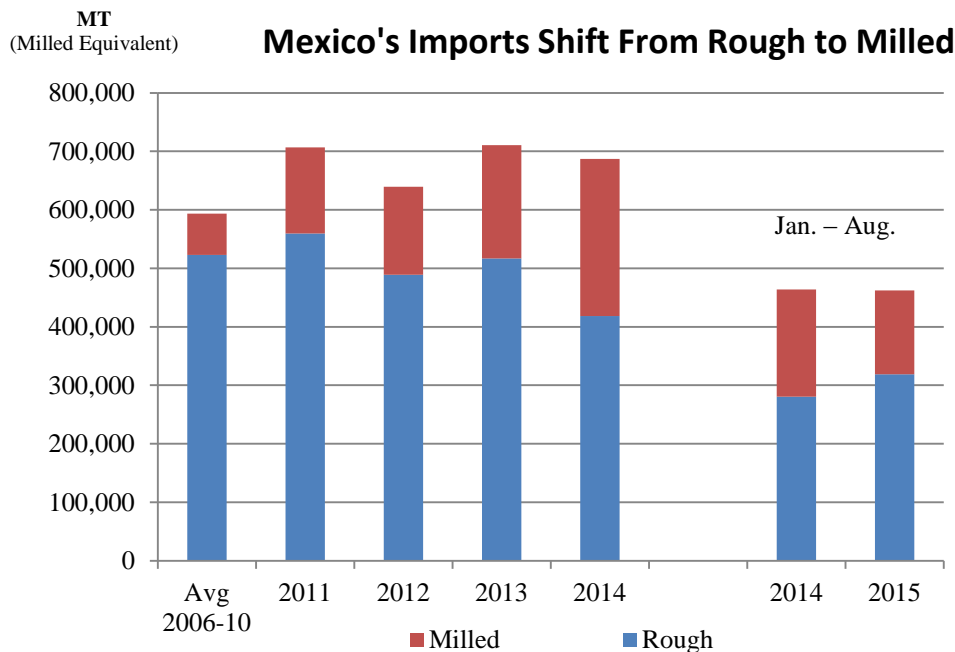
	2011/12	2012/13	2013/14	2014/15	Oct 2015/16	Nov 2015/16
TY Imports						
North America	8,554	7,784	9,862	8,923	8,235	8,235
Central America	1,666	1,654	1,833	1,834	1,795	1,795
South America	13,779	14,422	14,831	13,181	13,965	13,565
European Union - 28	7,362	5,276	3,974	5,973	6,000	6,000
Other Europe	1,930	1,703	1,921	1,748	1,895	1,895
Former Soviet Union - 12	8,022	7,228	7,411	7,667	7,090	7,140
Middle East	23,066	24,163	28,342	26,928	26,000	26,000
North Africa	24,855	22,078	25,229	25,180	25,600	25,600
Sub-Saharan Africa	19,176	18,501	20,443	20,945	21,680	22,230
East Asia	16,865	17,352	19,463	14,120	14,910	14,410
South Asia	5,487	5,308	6,733	8,036	7,751	7,251
Southeast Asia	18,019	16,325	17,119	20,595	20,125	20,775
Others	3,127	2,965	3,049	3,201	3,215	3,215
Total	151,908	144,759	160,210	158,331	158,261	158,111
Production						
North America	83,160	91,734	99,012	88,254	85,540	85,620
South America	25,766	18,604	19,881	22,607	21,361	21,181
European Union - 28	138,182	133,949	144,428	156,466	155,263	157,274
Other Europe	3,597	3,431	4,059	3,856	4,132	4,132
Former Soviet Union - 12	114,985	77,802	103,873	112,728	117,530	117,030
Middle East	39,285	36,884	41,708	35,117	40,855	40,855
North Africa	18,366	17,320	19,722	16,900	20,260	20,000
Sub-Saharan Africa	6,231	6,718	7,518	7,721	7,006	6,913
East Asia	118,775	122,490	123,248	127,610	131,178	131,298
South Asia	117,236	126,239	125,706	129,595	122,060	122,080
Oceania	30,288	23,345	25,751	24,067	27,400	26,400
Others	186	186	201	201	201	201
Total	696,057	658,702	715,107	725,122	732,786	732,984
Domestic Consumption						
North America	49,414	53,923	50,344	47,495	49,177	49,177
South America	26,085	26,407	27,251	26,932	27,389	26,789
European Union - 28	127,234	119,250	117,300	123,500	125,850	126,750
Other Europe	4,871	4,721	4,757	4,810	4,890	4,890
Former Soviet Union - 12	79,980	71,725	72,940	75,840	78,125	77,525
Middle East	56,723	56,636	58,717	58,122	60,060	60,060
North Africa	40,927	41,421	42,424	42,676	44,325	44,325
Sub-Saharan Africa	23,260	23,994	26,659	27,149	28,020	28,045
East Asia	137,057	140,072	130,321	131,287	129,251	130,851
South Asia	115,930	121,007	132,041	132,253	134,526	133,926
Southeast Asia	16,665	16,520	16,574	19,030	19,730	20,080
Oceania	7,824	8,111	8,280	8,869	8,700	8,800
Others	3,379	3,366	3,494	3,552	3,594	3,594
Total	689,349	687,153	691,102	701,515	713,637	714,812
Ending Stocks						
North America	26,718	24,950	26,817	28,104	29,521	29,962
South America	4,107	3,839	7,063	6,728	6,701	6,084
European Union - 28	13,522	10,711	9,780	13,318	15,480	16,342
Other Europe	1,458	1,149	1,103	1,242	1,304	1,304
Former Soviet Union - 12	26,006	13,920	15,117	19,458	20,545	20,648
Middle East	12,193	13,798	18,275	17,867	19,295	19,332
North Africa	14,094	11,487	13,550	12,347	13,232	12,972
Sub-Saharan Africa	2,401	2,486	2,957	3,195	2,941	3,348
East Asia	59,235	57,509	68,487	77,594	93,393	90,916
South Asia	25,448	28,173	21,642	22,575	16,598	16,625
Southeast Asia	4,678	3,814	3,582	4,295	3,840	4,140
Oceania	7,436	4,983	4,875	4,556	5,276	5,271
Others	372	341	367	413	362	359
Total	197,668	177,160	193,615	211,692	228,488	227,303

NOTES: Regional definitions appear on last page of this circular. Imports are reported on a trade year basis. All other data are reported using local marketing years.

RICE: WORLD MARKETS AND TRADE

OVERVIEW

Global production for 2015/16 is down from last month as reductions for Bangladesh, Cambodia, and the Philippines more than offset gains for South Korea, Sri Lanka and the United States. Global consumption is revised lower driven by adjustments in China, reflecting changes in diets and declining feed and industrial use. Consequently, global stocks are raised. Global trade is marginally lower. U.S. exports for 2016 are unchanged.

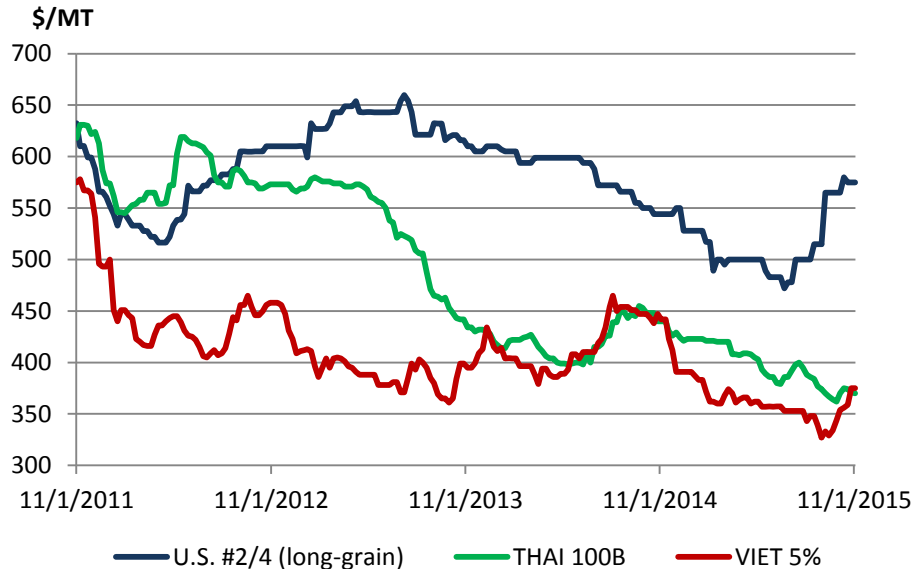


Traditionally, rough rice has accounted for the bulk of Mexico's imports; however, over the past 4 years, milled imports have risen as the proportion of rough imports has fallen.

In particular, a decline in domestic milling in 2011 contributed to the expansion of milled rice imports at the expense of rough. Mexico has been a key market for U.S. long-grain milled and rough rice; however, the U.S. share of Mexico's milled imports plunged from 78 percent to 39 percent, attributable to the availability of competitively priced Asian origins.

Should Mexico's appetite for milled rice persist, the United States could face heightened competition from Vietnam, a major exporter and party to the Trans-Pacific Partnership agreement eligible for duty-free access after a 10 year phase-out period. Notably, in January 2015, Mexico re-introduced tariffs on rice imports from countries with which it does not have a free trade agreement – a measure from which the United States should continue to benefit.

Major Asian Quotes Converge



Export quotes for Thai 100B are slightly weaker, pressured by ongoing harvest of the main crop, which accounts for about two-thirds of national production. Thailand's recent sales of 500,000 tons to Indonesia had little impact on boosting prices. In contrast, quotes for Viet rice are up nearly \$20 per ton to \$375, supported by sales to the Philippines and Indonesia. Meanwhile, U.S. quotes remain elevated with a premium of nearly \$200 above the Asian origins.

SELECTED TRADE CHANGES for 2016

- **Cambodia's** exports are cut 200,000 tons to 800,000 on a smaller crop.
- **Cote d'Ivoire's** imports are trimmed 100,000 tons to 800,000 on large carryin stocks.
- **Indonesia's** imports are boosted 300,000 tons to 1.6 million to reflect recent purchases from Vietnam and Thailand.
- **Sri Lanka's** imports are down 150,000 tons to 50,000 on an expected record crop.
- **Vietnam's** imports are lowered 100,000 tons to 400,000 reflecting reduced supplies in Cambodia, its major supplier.

World Rice Trade
January/December Year, Thousand Metric Tons

	2011/12	2012/13	2013/14	2014/15	2015/16 Oct	2015/16 Nov
TY Exports						
Argentina	608	526	494	350	480	480
Australia	449	460	404	400	330	330
Brazil	1,105	830	850	800	800	800
Burma	1,357	1,163	1,688	2,000	1,800	1,800
Cambodia	900	1,075	1,000	1,100	1,000	800
China	267	447	393	400	400	400
Egypt	600	700	600	250	400	400
European Union	194	203	284	260	220	260
Guyana	265	346	422	500	520	520
India	10,250	10,480	10,907	11,500	9,500	9,500
Pakistan	3,399	4,126	3,600	4,000	4,500	4,500
Paraguay	262	365	380	400	500	500
Thailand	6,945	6,722	10,969	9,000	9,500	9,500
Uruguay	1,056	939	957	900	950	950
Vietnam	7,717	6,700	6,325	6,200	7,000	7,000
Others	1,276	1,089	1,026	969	871	871
Subtotal	36,650	36,171	40,299	39,029	38,771	38,611
United States	3,298	3,295	2,998	3,450	3,250	3,250
World Total	39,948	39,466	43,297	42,479	42,021	41,861
TY Imports						
Angola	360	430	496	450	450	450
Bangladesh	53	114	1,290	600	850	850
Brazil	732	712	586	450	700	700
Cameroon	450	550	610	525	530	530
China	2,900	3,483	4,168	4,500	4,700	4,700
Cote d'Ivoire	1,265	830	950	1,100	900	800
Cuba	330	413	377	450	500	500
European Union	1,313	1,375	1,556	1,580	1,550	1,500
Ghana	595	725	590	500	600	600
Haiti	372	416	385	420	420	420
Indonesia	1,960	650	1,225	1,400	1,300	1,600
Iran	1,500	2,220	1,650	1,500	1,600	1,600
Iraq	1,478	1,294	1,080	1,100	1,200	1,200
Japan	650	690	669	650	700	700
Kenya	400	410	440	450	460	460
Malaysia	1,006	885	989	950	1,000	1,000
Mexico	680	746	658	700	700	700
Mozambique	445	500	500	480	500	500
Nigeria	3,400	2,400	3,200	4,000	3,000	3,000
Philippines	1,500	1,000	1,800	1,800	1,800	1,800
Saudi Arabia	1,193	1,326	1,410	1,460	1,550	1,550
Senegal	1,200	1,075	1,200	1,100	1,100	1,100
South Africa	870	990	910	980	950	950
United Arab Emirates	430	440	450	460	460	460
Venezuela	375	500	480	500	500	500
Others	11,017	11,639	12,558	10,923	11,028	10,708
Subtotal	36,474	35,813	40,227	39,028	39,048	38,878
Unaccounted	2,834	2,978	2,315	2,681	2,153	2,163
United States	640	675	755	770	820	820
World Total	39,948	39,466	43,297	42,479	42,021	41,861

TY=Trade Year, see Endnotes. Note about dates: 2014/15 is calendar year 2015, 2013/14 is calendar year 2014, and so on.

World Rice Production, Consumption, and Stocks
Local Marketing Years, Thousand Metric Tons

	2011/12	2012/13	2013/14	2014/15	2015/16 Oct	2015/16 Nov
Milled Production						
Bangladesh	33,700	33,820	34,390	34,500	35,000	34,600
Brazil	7,888	8,037	8,300	8,465	8,000	8,000
Burma	11,473	11,715	11,957	12,600	12,200	12,200
Cambodia	4,268	4,670	4,725	4,700	4,700	4,350
China	140,700	143,000	142,530	144,500	145,500	145,500
Egypt	4,250	4,675	4,750	4,530	4,000	4,000
India	105,310	105,240	106,646	104,800	103,500	103,500
Indonesia	36,500	36,550	36,300	35,760	36,300	36,300
Japan	7,812	7,923	7,937	7,842	7,900	7,900
Korea, South	4,224	4,006	4,230	4,241	4,000	4,258
Pakistan	6,200	5,800	6,700	6,900	6,900	6,900
Philippines	10,710	11,428	11,858	11,915	12,000	11,500
Sri Lanka	3,138	2,675	2,840	2,850	3,000	3,300
Thailand	20,460	20,200	20,460	18,750	16,400	16,400
Vietnam	27,152	27,537	28,161	28,074	28,200	28,200
Others	38,020	39,144	40,537	40,790	40,460	40,533
Subtotal	461,805	466,420	472,321	471,217	468,060	467,441
United States	5,866	6,348	6,117	7,068	5,963	6,057
World Total	467,671	472,768	478,438	478,285	474,023	473,498
Consumption and Residual						
Bangladesh	34,300	34,500	34,900	35,200	35,500	35,500
Brazil	7,928	7,850	7,900	7,900	7,950	7,900
Burma	10,200	10,400	10,450	10,550	10,500	10,500
Cambodia	3,400	3,550	3,650	3,700	3,700	3,600
China	139,600	144,000	146,300	147,500	151,000	150,000
Egypt	3,620	4,050	4,000	4,000	4,000	4,000
India	93,334	94,031	99,180	98,097	99,200	99,000
Indonesia	38,188	38,127	38,500	38,500	38,650	38,650
Japan	8,396	8,367	8,285	8,308	8,375	8,375
Korea, South	4,880	4,489	4,422	4,450	4,360	4,360
Nepal	3,677	3,353	3,811	3,500	3,500	3,500
Nigeria	5,600	5,300	5,800	6,400	6,000	6,000
Philippines	12,860	12,850	12,850	13,200	13,250	13,250
Thailand	10,400	10,600	10,875	11,700	12,000	12,000
Vietnam	19,650	21,900	22,000	22,100	22,200	22,100
Others	56,912	59,038	61,297	61,061	61,314	61,377
Subtotal	457,466	465,099	477,584	478,023	483,536	482,176
United States	3,492	3,779	3,977	4,117	3,981	4,043
World Total	460,958	468,878	481,561	482,140	487,517	486,219
Ending Stocks						
China	45,023	46,826	46,811	47,700	45,600	47,500
India	25,100	25,440	22,757	17,660	11,906	13,160
Indonesia	7,403	6,476	5,501	4,161	3,401	3,411
Japan	2,735	2,857	3,108	3,212	3,362	3,362
Korea, South	755	780	899	1,158	1,206	1,464
Philippines	1,509	1,487	1,695	2,210	2,560	2,160
Thailand	9,330	12,808	11,724	10,074	5,274	5,274
Others	13,666	12,884	14,071	16,009	13,720	13,420
Subtotal	105,521	109,558	106,566	102,184	87,029	89,751
United States	1,303	1,156	1,025	1,552	1,264	1,264
World Total	106,824	110,714	107,591	103,736	88,293	91,015

Note: All data are reported on a milled basis.

Regional Rice Imports, Production, Consumption, and Stocks

Thousand Metric Tons

	2011/12	2012/13	2013/14	2014/15	Oct 2015/16	Nov 2015/16
TY Imports						
North America	1,664	1,776	1,771	1,820	1,880	1,880
Caribbean	845	971	901	1,025	1,075	1,075
South America	1,896	1,843	1,824	1,687	1,897	1,897
Other Europe	114	125	89	130	125	125
Former Soviet Union - 12	456	537	554	421	476	476
Middle East	6,455	7,152	6,637	6,225	6,590	6,570
North Africa	777	487	480	485	485	485
Sub-Saharan Africa	12,135	11,740	12,934	12,870	11,840	11,740
East Asia	4,389	5,332	5,761	6,135	6,355	6,355
South Asia	737	722	2,581	1,470	1,620	1,420
Southeast Asia	5,488	3,606	5,020	5,215	5,250	5,450
Others	2,158	2,197	2,430	2,315	2,275	2,225
Total	37,114	36,488	40,982	39,798	39,868	39,698
Production						
North America	5,979	6,479	6,248	7,247	6,128	6,192
Caribbean	1,002	974	1,040	1,065	987	987
South America	15,215	15,852	16,384	16,737	16,277	16,289
European Union - 28	2,139	2,100	1,937	1,881	1,930	1,930
Former Soviet Union - 12	1,294	1,294	1,205	1,185	1,205	1,205
Middle East	2,170	2,251	2,450	2,443	2,359	2,392
North Africa	4,289	4,704	4,789	4,530	4,000	4,000
Sub-Saharan Africa	12,997	13,376	14,006	14,464	14,485	14,485
East Asia	155,508	157,859	157,794	159,383	160,170	160,428
South Asia	152,067	150,895	154,392	152,651	151,962	151,920
Southeast Asia	113,649	115,490	116,867	115,475	113,361	112,511
Others	1,362	1,494	1,326	1,224	1,159	1,159
Total	467,671	472,768	478,438	478,285	474,023	473,498
Domestic Consumption						
North America	4,668	4,977	5,202	5,337	5,211	5,273
Central America	1,156	1,171	1,193	1,198	1,212	1,217
Caribbean	1,977	1,964	1,973	2,131	2,078	2,078
South America	14,180	14,404	14,556	14,658	14,809	14,809
European Union - 28	3,300	3,250	3,250	3,265	3,280	3,280
Former Soviet Union - 12	1,422	1,559	1,535	1,414	1,451	1,451
Middle East	8,603	8,854	9,029	8,875	8,940	8,940
North Africa	4,045	4,572	4,480	4,460	4,460	4,460
Sub-Saharan Africa	23,811	24,777	26,628	26,768	26,491	26,441
East Asia	156,232	160,365	162,627	163,653	167,005	166,005
South Asia	137,234	137,576	143,946	143,388	144,762	144,620
Southeast Asia	99,148	102,008	103,102	104,606	105,241	105,041
Others	661	707	676	530	540	540
Total	456,437	466,184	478,197	480,283	485,480	484,155
Ending Stocks						
North America	1,455	1,345	1,176	1,704	1,366	1,378
Central America	235	189	208	253	208	245
Caribbean	343	279	261	226	210	210
South America	1,606	1,491	1,805	2,077	1,832	1,858
European Union - 28	1,146	1,188	1,163	1,218	1,099	1,108
Middle East	1,526	2,039	1,836	1,519	1,603	1,511
North Africa	487	427	602	907	532	532
Sub-Saharan Africa	2,085	2,297	1,835	2,423	1,785	1,847
East Asia	48,887	50,826	51,183	52,345	50,480	52,627
South Asia	27,511	27,019	25,731	21,581	15,585	16,546
Southeast Asia	21,369	23,197	21,395	19,179	13,339	12,899
Oceania	40	238	241	182	102	102
Others	134	179	155	122	152	152
Total	106,824	110,714	107,591	103,736	88,293	91,015

NOTES: Regional definitions appear on last page of this circular. Imports are reported on a trade year basis. All other data are reported using local marketing years.

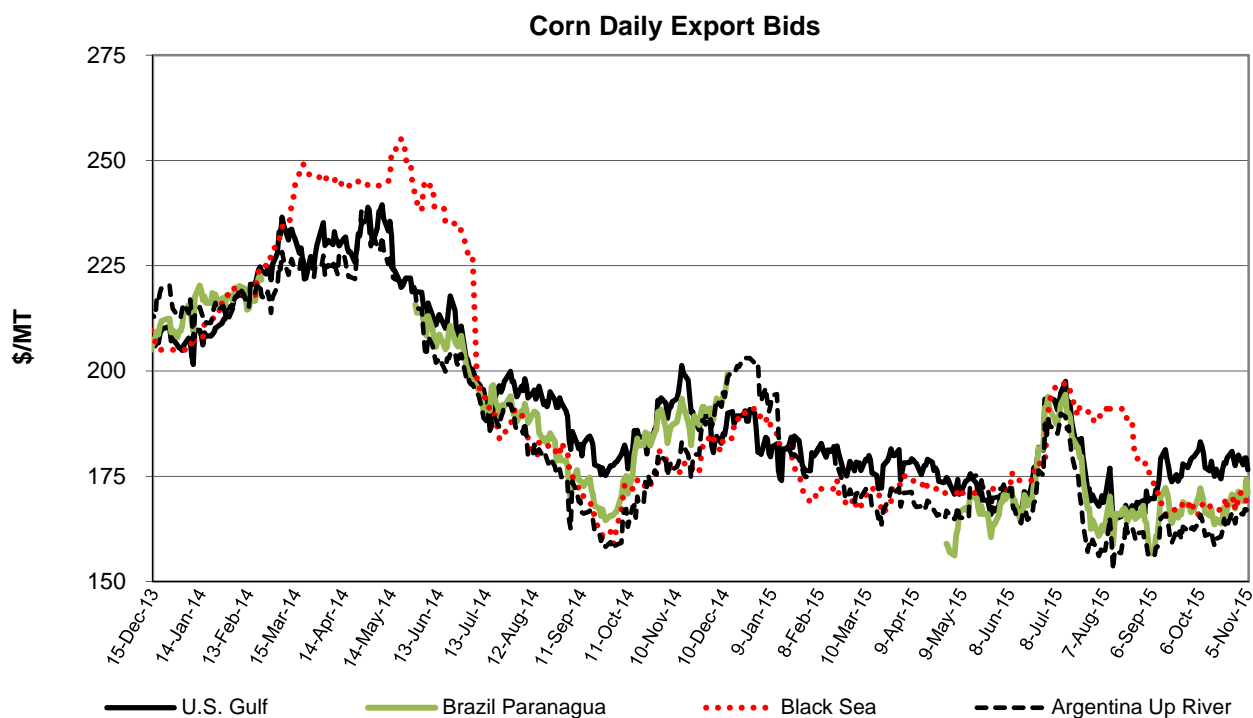
COARSE GRAINS: WORLD MARKETS AND TRADE

OVERVIEW

World corn production in 2015/16 is up, with higher forecasts for the United States, Argentina, and Brazil more than offsetting smaller crops in Ukraine, South Africa, and India. Global trade is little changed overall. Exports are raised for Argentina and Brazil, but lowered for Ukraine, the United States, India, and South Africa. The U.S. season-average farm price is lowered.

Estimates of **Brazil's** corn feeding and stocks were revised for the years 2006/07 through 2011/12. Feed and residual use was raised and stocks were lowered, each by a total of 5.0 million tons over those years. **China's** corn feeding and stocks were revised from 2013/14 through 2015/16. Feed and residual use was lowered by a total of 28.0 million tons, reflecting expanded imports and consumption of alternative feedstuffs because of relatively high domestic corn prices. FSI consumption was raised 4.0 million tons, supported by government subsidies to corn processors. As a result, corn ending stocks were raised nearly 24 million tons. Details of these changes are available at the following page:

<http://www.usda.gov/oce/commodity/wasde/historical.htm>



PRICES

Since the release of the October WASDE report, U.S. corn quotes were little changed at \$183/ton while Argentine, Brazilian, and Black Sea quotes were all up slightly. The premium for U.S. corn shrunk over the last month as the harvest entered its final phase and uncertainties over the crop size diminished. However, reluctant farmer selling has kept U.S. prices relatively high against competitors, despite burdensome supplies.

TRADE CHANGES IN 2015/16

Selected Exporters

- **U.S. corn** is down 1.0 million tons to 46.0 million on the slow pace of sales to date and abundant South American supplies.
- **Argentine corn** is raised 2.0 million tons to 17.0 million on larger crop prospects.
- **Brazilian corn** is boosted 2.0 million tons to a new record 33.0 million on higher anticipated 2015/16 production. For the fifth consecutive month, Brazil's exports have been raised to a new record as the production estimate has grown.
- **Indian corn** is down 500,000 tons to 1.5 million based on a smaller crop and high relative prices.
- **South African corn** is lowered 200,000 tons to 800,000 with reduced planting expectations.
- **Ukrainian corn** is reduced 2.0 million tons to 15.0 million on account of lower production.
- **Canadian barley** is up 200,000 tons to 1.7 million based on improved competitiveness.
- **EU barley** is raised 1.0 million tons to 8.0 million on a larger crop and the fast pace of export licenses.
- **Russian barley** is down 1.0 million tons to 3.0 million on lower production. (Exports for 2014/15 are raised 300,000 tons to 5.8 million.)
- **U.S. sorghum** is lowered 3.5 million tons to 7.5 million on reduced demand in China.

Selected Importers

- **Iranian corn** is up 500,000 tons to 4.5 million on stronger prospects for feed demand, as suggested by higher 2014/15 imports. (Imports for 2014/15 are raised 200,000 tons to 6.2 million.)
- **Israeli corn** is down 200,000 tons to 1.6 million on lower expected feed use in light of weaker imports in 2014/15. (Imports for 2014/15 are down 400,000 tons to 1.3 million.)
- **Saudi barley** is boosted 500,000 tons to 7.5 million on higher-than-anticipated late-season shipments for 2014/15, which raise expectations for demand in 2015/16. (Imports for 2014/15 are boosted 500,000 tons to 8.0 million.)

-
- **Chinese sorghum** is slashed 4.0 million tons to 7.0 million on slowing purchases, evidenced by the shrinking price premium for U.S. sorghum relative to U.S. corn.
 - **Mexican sorghum** is up 450,000 tons to 500,000 based on recent purchases, a smaller crop, and the lower cost of U.S. supplies.

TRADE CHANGES IN 2014/15

Selected Exporters - based on trade data

- **Mexican corn** is raised 300,000 tons to 800,000.
- **Paraguayan corn** is up 312,000 tons to 3.0 million.
- **Russian corn** is boosted 300,000 tons to 3.2 million.
- **Australian barley** is down 232,000 tons to 5.3 million.

Selected Importers - based on trade data

- **Egyptian corn** is up 300,000 tons to 7.8 million.
- **Indonesian corn** is lowered 300,000 tons to 3.2 million.
- **Mexican corn** is hiked 269,000 tons to 11.3 million.
- **Chinese barley** is up 859,000 tons to a record 9.9 million.
- **Iranian barley** is lowered 200,000 tons to 1.8 million.
- **Libyan barley** is raised 200,000 tons to a new record 900,000.

World Coarse Grain Trade
October/September Year, Thousand Metric Tons

	2011/12	2012/13	2013/14	2014/15	2015/16 Oct	2015/16 Nov
TY Exports						
Argentina	22,308	29,497	16,630	20,997	18,505	20,505
Australia	7,279	6,410	7,003	7,293	7,325	7,325
Brazil	12,677	26,078	22,059	21,954	31,015	33,015
Canada	3,853	4,658	5,460	3,699	3,700	3,900
European Union	7,177	8,914	7,837	14,905	8,305	9,305
India	4,858	5,541	4,524	1,450	2,500	2,000
Paraguay	2,188	2,861	2,718	3,017	2,305	2,305
Russia	5,997	4,365	7,043	9,125	8,110	7,110
Serbia	2,345	628	1,755	2,925	1,725	1,725
Ukraine	17,447	15,527	24,125	24,020	20,680	18,680
Others	7,127	7,106	8,690	11,634	7,045	6,845
Subtotal	93,256	111,585	107,844	121,019	111,215	112,715
United States	40,106	20,586	56,772	56,340	58,335	53,835
World Total	133,362	132,171	164,616	177,359	169,550	166,550
TY Imports						
Algeria	3,741	3,289	4,946	4,881	4,810	4,810
Canada	764	523	714	1,635	1,610	1,610
Chile	1,523	1,327	1,621	1,600	1,750	1,750
China	7,924	5,604	12,445	25,699	21,250	17,250
Colombia	4,103	4,090	4,795	4,730	4,830	4,830
Dominican Republic	1,054	1,046	1,011	1,100	1,100	1,100
Egypt	7,252	5,096	8,776	7,905	8,055	8,055
European Union	6,908	11,777	16,262	9,175	16,255	16,255
Indonesia	1,724	2,719	3,501	3,200	3,000	3,000
Iran	5,700	4,800	6,600	8,000	5,500	6,000
Israel	1,530	1,564	2,073	1,675	2,175	1,975
Japan	17,730	17,743	17,501	16,725	17,075	16,975
Jordan	1,311	1,406	1,672	1,450	1,475	1,575
Kenya	490	202	894	1,000	1,100	1,100
Korea, South	7,726	8,265	10,499	10,263	10,090	10,090
Libya	829	1,220	1,493	1,600	1,450	1,550
Malaysia	3,309	3,048	3,476	3,400	3,600	3,600
Mexico	12,819	7,627	11,317	11,498	10,775	11,225
Morocco	2,479	1,831	2,858	2,300	2,300	2,300
Peru	1,927	2,404	2,336	2,850	2,625	2,625
Saudi Arabia	10,485	12,390	11,331	11,025	11,025	11,525
Taiwan	4,478	4,398	4,356	4,300	4,400	4,400
Tunisia	1,071	1,610	1,449	1,550	1,500	1,500
Venezuela	2,596	2,154	2,627	2,000	2,000	2,000
Vietnam	1,600	1,700	2,800	3,500	3,000	3,000
Others	15,944	15,462	17,468	18,000	16,300	16,400
Subtotal	127,017	123,295	154,821	161,061	159,050	156,500
Unaccounted	3,203	2,361	6,473	13,011	7,450	7,050
United States	3,142	6,515	3,322	3,287	3,050	3,000
World Total	133,362	132,171	164,616	177,359	169,550	166,550

TY=Trade Year, see Endnotes.

World Coarse Grains Production, Consumption, and Stocks
Local Marketing Years, Thousand Metric Tons

	2011/12	2012/13	2013/14	2014/15	2015/16 Oct	2015/16 Nov
Production						
Argentina	30,105	37,246	35,665	33,532	32,461	34,061
Australia	12,257	11,414	12,158	11,663	12,775	12,775
Brazil	75,884	84,253	82,603	87,603	82,583	84,083
Canada	22,921	24,445	28,745	21,992	23,628	23,668
China	198,635	212,192	225,070	222,170	231,500	231,500
Ethiopia	12,264	12,286	14,468	13,350	12,400	12,400
European Union	149,923	145,942	158,915	170,546	149,344	150,456
India	42,058	39,910	43,216	41,971	41,100	40,100
Indonesia	8,850	8,500	9,100	8,800	9,600	9,600
Mexico	25,689	28,881	32,020	32,390	31,975	31,325
Nigeria	17,421	18,573	19,292	19,015	17,950	17,950
Russia	33,077	28,658	35,735	40,386	39,800	39,000
South Africa	13,268	12,873	15,518	11,277	14,105	13,370
Turkey	11,299	10,595	13,075	9,475	14,075	14,075
Ukraine	33,476	29,527	39,918	39,345	34,775	32,825
Others	147,174	146,783	148,475	156,278	154,038	154,217
Subtotal	834,301	852,078	913,973	919,793	902,109	901,405
United States	322,451	285,311	367,089	377,234	365,138	368,156
World Total	1,156,752	1,137,389	1,281,062	1,297,027	1,267,247	1,269,561
Domestic Consumption						
Argentina	10,510	12,050	13,595	14,332	14,976	14,976
Brazil	54,653	55,803	58,028	59,928	61,843	61,843
Canada	20,285	20,339	22,372	21,271	21,511	21,511
China	196,192	209,671	223,600	228,550	243,475	234,775
Egypt	12,736	12,910	14,080	14,809	15,408	15,458
European Union	151,460	153,095	164,105	163,270	161,320	160,420
India	37,650	35,075	37,600	40,000	39,850	39,450
Indonesia	10,500	10,900	11,900	12,200	12,500	12,700
Iran	10,320	10,520	11,320	12,020	12,520	12,720
Japan	17,990	18,030	17,640	16,975	17,225	17,125
Mexico	37,985	36,195	40,885	41,940	42,590	42,790
Nigeria	17,321	18,700	19,350	18,950	18,150	18,150
Russia	27,728	25,134	28,619	31,139	31,600	31,600
Turkey	11,755	13,005	13,430	13,080	14,130	14,130
Ukraine	15,559	14,661	15,927	15,185	13,955	13,905
Others	216,118	220,045	228,074	236,119	238,163	238,412
Subtotal	866,937	859,936	928,803	953,462	962,383	950,843
United States	288,857	275,537	305,048	311,344	313,164	314,689
World Total	1,155,794	1,135,473	1,233,851	1,264,806	1,275,547	1,265,532
Ending Stocks						
Brazil	4,821	9,559	14,259	11,816	15,544	10,041
Canada	3,390	3,024	4,648	3,227	3,254	3,294
China	60,362	68,378	82,260	101,541	91,780	115,441
European Union	15,745	13,083	15,501	17,838	12,815	14,474
Iran	4,684	4,654	5,094	7,234	6,074	6,174
Mexico	1,857	1,628	3,583	4,724	4,372	3,984
Saudi Arabia	3,211	3,391	3,888	3,873	3,693	3,993
Others	39,898	36,455	47,368	45,931	41,665	40,593
Subtotal	133,968	140,172	176,601	196,184	179,197	197,994
United States	27,819	23,531	34,313	46,951	43,698	49,170
World Total	161,787	163,703	210,914	243,135	222,895	247,164

Regional Coarse Grains Imports, Production, Consumption, and Stocks

Thousand Metric Tons

	2011/12	2012/13	2013/14	2014/15	Oct 2015/16	Nov 2015/16
TY Imports						
North America	16,725	14,665	15,353	16,420	15,435	15,835
Central America	2,769	2,470	2,923	3,275	3,350	3,350
Caribbean	2,156	2,327	2,330	2,410	2,410	2,410
South America	11,967	11,812	13,182	12,657	12,750	12,750
European Union - 28	6,908	11,777	16,262	9,175	16,255	16,255
Former Soviet Union - 12	1,038	725	832	807	815	815
Middle East	23,515	25,076	26,613	27,445	23,840	24,740
North Africa	15,372	13,046	19,522	18,236	18,115	18,215
Sub-Saharan Africa	3,328	2,745	3,629	4,222	4,120	4,220
East Asia	38,040	36,163	44,880	57,087	52,915	48,815
Southeast Asia	7,317	8,058	11,287	11,335	10,780	10,780
Others	1,024	946	1,330	1,279	1,315	1,315
Total	130,159	129,810	158,143	164,348	162,100	159,500
Production						
North America	371,061	338,637	427,854	431,616	420,741	423,149
South America	119,682	136,283	132,043	134,774	129,304	132,418
European Union - 28	149,923	145,942	158,915	170,546	149,344	150,456
Other Europe	9,497	6,570	8,813	10,696	8,446	8,446
Former Soviet Union - 12	78,648	68,221	87,645	91,729	85,831	83,231
Middle East	20,412	18,769	21,737	17,957	22,781	22,796
North Africa	11,142	10,126	11,647	11,192	12,532	12,532
Sub-Saharan Africa	99,469	103,590	103,848	105,158	103,655	102,920
East Asia	200,771	214,639	227,482	224,599	233,909	233,909
South Asia	50,303	48,559	52,256	51,019	49,958	48,958
Southeast Asia	28,379	29,138	30,968	30,883	32,503	32,503
Oceania	12,813	12,082	12,804	12,335	13,436	13,436
Others	4,652	4,833	5,050	4,523	4,807	4,807
Total	1,156,752	1,137,389	1,281,062	1,297,027	1,267,247	1,269,561
Domestic Consumption						
North America	347,127	332,071	368,305	374,555	377,265	378,990
South America	86,901	90,054	94,608	97,499	100,464	100,438
European Union - 28	151,460	153,095	164,105	163,270	161,320	160,420
Other Europe	8,375	7,100	7,702	8,009	8,040	8,040
Former Soviet Union - 12	54,378	50,230	55,633	57,837	57,286	57,311
Middle East	41,186	43,027	45,890	45,394	47,616	47,866
North Africa	25,266	24,941	27,998	30,097	30,940	31,140
Sub-Saharan Africa	97,790	103,311	103,168	107,116	105,045	105,045
East Asia	228,717	243,025	257,824	262,400	277,546	268,746
South Asia	45,733	43,244	46,591	49,213	49,128	48,728
Southeast Asia	34,612	35,867	37,904	40,240	41,365	41,565
Oceania	6,518	6,132	5,765	5,323	5,926	5,926
Others	9,556	9,573	10,080	10,159	10,439	10,439
Total	1,137,619	1,141,670	1,225,573	1,251,112	1,272,380	1,264,654
Ending Stocks						
North America	33,066	28,183	42,544	54,902	51,324	56,448
South America	9,549	15,442	21,281	17,456	20,335	14,961
European Union - 28	15,745	13,083	15,501	17,838	12,815	14,474
Other Europe	1,024	603	766	1,271	852	842
Former Soviet Union - 12	6,185	5,037	6,991	7,727	6,037	6,282
Middle East	10,547	10,059	11,817	13,053	12,306	12,653
North Africa	5,504	3,526	5,719	5,555	4,849	5,202
Sub-Saharan Africa	9,272	9,055	9,971	9,670	8,665	8,330
East Asia	63,392	71,035	85,590	104,838	95,051	118,741
South Asia	2,676	2,722	4,261	4,753	3,368	3,183
Southeast Asia	3,061	3,275	4,396	4,184	5,007	3,762
Oceania	978	915	1,133	930	1,235	1,235
Others	788	768	944	958	1,051	1,051
Total	161,787	163,703	210,914	243,135	222,895	247,164

NOTES: Regional definitions appear on last page of this circular. Imports are reported on a trade year basis. All other data are reported using local marketing years.

World Corn Trade
October/September Year, Thousand Metric Tons

	2011/12	2012/13	2013/14	2014/15	2015/16 Oct	2015/16 Nov
TY Exports						
Argentina	16,501	22,789	12,846	18,442	15,000	17,000
Brazil	12,674	26,044	22,041	21,909	31,000	33,000
Burma	200	550	700	850	900	900
European Union	3,287	2,193	2,401	4,000	1,000	1,000
India	4,674	4,768	3,889	1,100	2,000	1,500
Paraguay	2,188	2,858	2,714	3,012	2,300	2,300
Russia	2,027	1,917	4,192	3,200	4,000	4,000
Serbia	2,331	601	1,736	2,900	1,700	1,700
South Africa	1,831	2,398	2,104	745	1,000	800
Ukraine	15,157	12,726	20,004	19,800	17,000	15,000
Others	4,470	5,421	6,839	9,537	4,835	4,835
Subtotal	65,340	82,265	79,466	85,495	80,735	82,035
United States	38,342	18,262	50,684	46,773	47,000	46,000
World Total	103,682	100,527	130,150	132,268	127,735	128,035
TY Imports						
Algeria	3,231	2,918	4,156	4,116	4,200	4,200
Canada	747	493	679	1,500	1,500	1,500
Chile	906	844	1,456	1,400	1,600	1,600
China	5,231	2,702	3,277	5,516	3,000	3,000
Colombia	3,209	3,266	4,436	4,400	4,500	4,500
Cuba	743	911	928	900	900	900
Dominican Republic	1,054	1,046	1,011	1,100	1,100	1,100
Egypt	7,154	5,059	8,726	7,800	8,000	8,000
European Union	6,113	11,362	15,919	8,700	16,000	16,000
Guatemala	691	678	767	850	900	900
Indonesia	1,724	2,719	3,501	3,200	3,000	3,000
Iran	4,000	3,700	5,500	6,200	4,000	4,500
Israel	1,221	1,224	1,652	1,300	1,800	1,600
Japan	14,892	14,412	15,121	14,656	14,800	14,700
Kenya	400	100	800	900	1,000	1,000
Korea, South	7,636	8,174	10,406	10,179	10,000	10,000
Malaysia	3,309	3,048	3,476	3,400	3,600	3,600
Mexico	11,172	5,676	10,954	11,269	10,500	10,500
Morocco	1,943	1,684	2,349	2,000	2,100	2,100
Peru	1,772	2,254	2,232	2,700	2,500	2,500
Saudi Arabia	1,816	2,063	2,684	3,000	4,000	4,000
Taiwan	4,341	4,232	4,189	4,200	4,300	4,300
Tunisia	853	846	993	1,050	1,100	1,100
Venezuela	2,596	2,154	2,626	2,000	2,000	2,000
Vietnam	1,600	1,700	2,800	3,500	3,000	3,000
Others	12,335	11,620	13,737	14,562	13,225	13,325
Subtotal	100,689	94,885	124,375	120,398	122,625	122,925
Unaccounted	2,228	1,377	5,048	11,061	4,360	4,360
United States	765	4,265	727	809	750	750
World Total	103,682	100,527	130,150	132,268	127,735	128,035

TY=Trade Year, see Endnotes.

World Corn Production, Consumption, and Stocks
Local Marketing Years, Thousand Metric Tons

	2011/12	2012/13	2013/14	2014/15	2015/16 Oct	2015/16 Nov
Production						
Argentina	21,000	27,000	26,000	26,500	24,000	25,600
Brazil	73,000	81,500	80,000	85,000	80,000	81,500
Canada	11,359	13,060	14,194	11,487	12,300	12,300
China	192,780	205,614	218,490	215,670	225,000	225,000
Egypt	5,500	5,800	5,800	5,960	6,000	6,000
Ethiopia	6,069	6,158	7,451	6,500	6,000	6,000
European Union	68,123	58,896	64,630	75,730	57,996	57,751
India	21,759	22,258	24,259	23,670	23,000	22,500
Indonesia	8,850	8,500	9,100	8,800	9,600	9,600
Mexico	18,726	21,591	22,880	25,480	23,500	23,500
Nigeria	9,250	7,630	7,700	7,515	7,000	7,000
Philippines	7,130	7,261	7,532	7,671	7,800	7,800
Russia	6,962	8,213	11,635	11,325	13,500	13,500
South Africa	12,759	12,365	14,925	10,800	13,500	12,750
Ukraine	22,838	20,922	30,900	28,450	25,000	23,000
Others	90,878	90,343	94,665	97,139	94,095	94,250
Subtotal	576,983	597,111	640,161	647,697	628,291	628,051
United States	312,789	273,192	351,272	361,091	344,311	346,815
World Total	889,772	870,303	991,433	1,008,788	972,602	974,866
Total Consumption						
Argentina	7,000	7,900	8,800	9,400	10,000	10,000
Brazil	51,500	52,500	55,000	57,000	59,000	59,000
Canada	11,636	11,605	12,700	12,800	13,350	13,350
China	188,000	200,000	208,000	202,000	219,000	214,000
Egypt	11,700	12,000	13,200	13,900	14,500	14,500
European Union	69,500	69,600	76,500	78,000	76,500	75,500
India	17,200	17,500	19,600	22,000	22,300	22,300
Indonesia	10,500	10,900	11,900	12,200	12,500	12,700
Japan	14,900	14,500	15,100	14,700	14,800	14,700
Korea, South	7,815	8,481	9,891	10,200	10,100	10,100
Mexico	29,000	27,000	31,700	34,450	34,000	34,300
Philippines	7,400	7,400	8,000	8,500	8,600	8,600
Russia	4,700	6,400	7,500	8,100	9,300	9,300
South Africa	10,700	11,000	11,500	11,200	11,400	11,400
Ukraine	7,800	8,100	9,700	9,400	8,400	8,400
Others	140,994	141,976	150,236	155,710	156,028	156,138
Subtotal	607,090	602,214	656,491	673,611	678,393	670,033
United States	277,961	262,973	292,965	301,851	302,401	301,131
World Total	885,051	865,187	949,456	975,462	980,794	971,164
Ending Stocks						
Brazil	4,212	9,150	13,972	11,572	15,172	9,672
China	59,335	67,570	81,315	100,488	90,610	114,438
European Union	6,682	5,147	6,795	9,225	5,121	6,476
Iran	3,336	3,236	4,476	5,816	4,656	4,956
Korea, South	1,489	1,265	1,860	1,921	1,819	1,898
Mexico	1,316	1,061	2,694	4,193	3,444	3,393
South Africa	1,276	664	2,198	1,798	2,223	1,873
Others	25,019	23,951	30,278	29,216	25,132	24,501
Subtotal	102,665	112,044	143,588	164,229	148,177	167,207
United States	25,122	20,859	31,292	43,977	39,657	44,701
World Total	127,787	132,903	174,880	208,206	187,834	211,908

Regional Corn Imports, Production, Consumption, and Stocks

Thousand Metric Tons

	2011/12	2012/13	2013/14	2014/15	Oct 2015/16	Nov 2015/16
TY Imports						
North America	12,684	10,434	12,360	13,578	12,750	12,750
Central America	2,766	2,470	2,922	3,275	3,350	3,350
South America	9,886	9,651	12,027	11,382	11,550	11,550
European Union - 28	6,113	11,362	15,919	8,700	16,000	16,000
Former Soviet Union - 12	328	324	464	465	490	490
Middle East	10,853	10,942	13,812	15,150	13,100	13,400
North Africa	13,827	11,154	17,036	15,666	16,150	16,150
Sub-Saharan Africa	2,660	2,096	2,937	3,610	3,625	3,725
East Asia	32,282	29,673	33,072	34,651	32,200	32,100
Southeast Asia	7,304	8,040	11,246	11,320	10,765	10,765
Caribbean	2,156	2,327	2,330	2,410	2,410	2,410
Others	595	677	977	1,000	985	985
Total	101,454	99,150	125,102	121,207	123,375	123,675
Production						
North America	342,874	307,843	388,346	398,058	380,111	382,615
South America	105,578	120,997	117,456	122,977	115,625	118,725
European Union - 28	68,123	58,896	64,630	75,730	57,996	57,751
Other Europe	7,810	4,915	7,210	8,945	6,676	6,676
Former Soviet Union - 12	34,121	32,310	46,916	43,725	41,760	39,910
Middle East	7,164	7,480	8,138	7,853	9,038	9,043
North Africa	5,722	5,891	6,001	6,161	6,201	6,201
Sub-Saharan Africa	62,102	60,564	64,296	60,868	60,351	59,601
East Asia	194,585	207,760	220,595	217,791	227,113	227,113
South Asia	28,646	29,634	31,911	31,330	30,470	29,970
Central America	3,602	3,743	3,893	3,366	3,650	3,650
Southeast Asia	28,138	28,893	30,721	30,638	32,258	32,258
Others	1,307	1,377	1,320	1,346	1,353	1,353
Total	889,772	870,303	991,433	1,008,788	972,602	974,866
Domestic Consumption						
North America	318,597	301,578	337,365	349,101	349,751	348,781
South America	76,491	79,031	83,666	86,710	89,345	89,305
European Union - 28	69,500	69,600	76,500	78,000	76,500	75,500
Other Europe	6,392	5,194	5,847	6,055	6,020	6,020
Former Soviet Union - 12	16,420	18,085	21,135	21,385	21,505	21,605
Middle East	17,585	18,710	19,785	21,835	22,635	22,635
North Africa	18,000	18,450	20,800	22,100	23,050	23,100
Sub-Saharan Africa	60,348	60,033	62,828	62,770	61,088	61,088
East Asia	217,047	229,434	239,295	233,255	250,325	245,225
South Asia	23,875	24,380	27,182	29,805	30,170	30,170
Southeast Asia	34,357	35,609	37,653	39,960	41,110	41,310
Central America	6,350	6,175	6,650	6,675	6,910	6,910
Others	3,344	3,556	3,586	3,760	3,770	3,770
Total	868,306	869,835	942,292	961,411	982,179	975,419
Ending Stocks						
North America	27,803	23,469	35,586	49,457	44,338	49,331
South America	8,194	13,483	18,762	15,454	18,343	12,979
European Union - 28	6,682	5,147	6,795	9,225	5,121	6,476
Other Europe	771	353	517	1,037	603	603
Former Soviet Union - 12	2,445	2,004	3,438	2,948	2,439	2,613
Middle East	4,510	4,228	5,957	7,030	6,283	6,593
North Africa	2,994	1,719	3,168	3,326	2,210	2,567
Sub-Saharan Africa	7,058	6,631	7,966	7,369	6,672	6,322
East Asia	61,841	69,734	84,134	103,308	93,383	117,246
South Asia	1,628	2,057	3,165	3,845	2,339	2,320
Southeast Asia	3,058	3,270	4,390	4,178	5,001	3,756
Central America	503	474	610	551	616	616
Others	300	334	392	478	486	486
Total	127,787	132,903	174,880	208,206	187,834	211,908

NOTES: Regional definitions appear on last page of this circular. Imports are reported on a trade year basis. All other data are reported using local marketing years.

World Barley Trade
October/September Year, Thousand Metric Tons

	2011/12	2012/13	2013/14	2014/15	2015/16 Oct	2015/16 Nov
TY Exports						
Argentina	3,631	3,647	2,829	1,599	2,000	2,000
Australia	5,819	4,621	6,262	5,268	6,000	6,000
Canada	1,437	1,316	1,714	1,384	1,500	1,700
European Union	3,646	6,473	4,926	10,500	7,000	8,000
India	52	542	546	300	400	400
Kazakhstan	659	151	575	500	500	500
Russia	3,668	2,366	2,762	5,800	4,000	3,000
Serbia	14	26	18	25	25	25
Turkey	103	0	9	10	25	25
Ukraine	2,166	2,659	3,827	4,000	3,500	3,500
Others	22	166	68	154	35	35
Subtotal	21,217	21,967	23,536	29,540	24,985	25,185
United States	179	163	336	292	300	300
World Total	21,396	22,130	23,872	29,832	25,285	25,485
TY Imports						
Algeria	501	364	778	750	600	600
Azerbaijan	49	14	78	125	100	100
Brazil	274	369	338	325	400	400
Canada	6	21	9	125	100	100
China	2,541	2,184	4,891	9,859	7,000	7,000
Colombia	301	232	253	275	275	275
European Union	364	52	58	250	100	100
Iran	1,700	1,100	1,100	1,800	1,500	1,500
Israel	276	244	304	325	325	325
Japan	1,257	1,356	1,294	1,097	1,200	1,200
Jordan	736	831	997	800	800	900
Kuwait	376	388	436	400	400	400
Libya	183	573	681	900	700	800
Mexico	144	47	108	100	125	125
Morocco	536	147	471	300	200	200
Peru	97	103	87	125	100	100
Saudi Arabia	8,600	10,200	8,500	8,000	7,000	7,500
Tunisia	218	764	456	500	400	400
United Arab Emirates	524	541	468	400	400	400
Uruguay	77	252	126	200	125	125
Others	1,646	1,426	1,618	1,342	975	975
Subtotal	20,406	21,208	23,051	27,998	22,825	23,525
Unaccounted	520	491	299	1,404	1,960	1,510
United States	470	431	522	430	500	450
World Total	21,396	22,130	23,872	29,832	25,285	25,485

TY=Trade Year, see Endnotes.

World Barley Production, Consumption, and Stocks
Local Marketing Years, Thousand Metric Tons

	2011/12	2012/13	2013/14	2014/15	2015/16 Oct	2015/16 Nov
Production						
Algeria	1,350	1,500	1,500	1,300	1,300	1,300
Argentina	4,500	5,000	4,750	2,900	3,400	3,400
Australia	8,221	7,472	9,174	8,014	8,900	8,900
Belarus	1,979	1,917	1,674	2,250	2,000	2,000
Canada	7,892	8,012	10,237	7,119	7,600	7,600
China	1,637	1,626	1,500	1,500	1,500	1,500
Ethiopia	1,592	1,782	2,053	2,100	1,900	1,900
European Union	51,883	54,875	59,667	60,427	59,806	60,697
India	1,663	1,619	1,752	1,831	1,600	1,600
Iran	2,900	2,770	2,800	3,200	3,300	3,300
Kazakhstan	2,593	1,500	2,539	2,412	2,600	2,600
Morocco	2,340	1,200	2,700	1,700	3,500	3,500
Russia	16,938	13,952	15,389	20,026	17,500	16,700
Turkey	7,000	5,500	7,300	4,000	7,400	7,400
Ukraine	9,098	6,935	7,561	9,450	8,600	8,700
Others	8,611	8,753	9,184	8,975	9,038	9,048
Subtotal	130,197	124,413	139,780	137,204	139,944	140,145
United States	3,370	4,768	4,719	3,953	4,666	4,666
World Total	133,567	129,181	144,499	141,157	144,610	144,811
Total Consumption						
Algeria	1,800	2,000	2,050	2,050	2,050	2,050
Argentina	1,200	1,300	1,600	1,500	1,500	1,500
Australia	3,300	3,000	2,800	2,600	2,600	2,600
Belarus	2,100	2,000	1,800	2,100	2,200	2,200
Canada	6,916	6,809	7,720	6,472	6,200	6,200
China	3,800	4,000	6,300	11,400	8,400	8,400
Ethiopia	1,600	1,725	2,000	2,100	2,025	2,025
European Union	51,200	51,000	53,400	51,000	52,700	52,600
Iran	4,100	4,300	4,500	4,600	4,800	4,800
Kazakhstan	1,825	1,375	2,000	1,900	2,100	2,100
Morocco	3,100	1,900	2,300	2,700	3,000	3,000
Russia	14,300	12,100	12,700	14,100	13,500	13,500
Saudi Arabia	7,225	8,325	8,625	8,125	8,025	8,225
Turkey	6,750	6,200	6,950	5,350	6,900	6,900
Ukraine	6,300	5,100	5,000	4,500	4,500	4,500
Others	15,778	16,117	16,744	16,766	16,583	16,758
Subtotal	131,030	126,772	136,308	136,984	140,535	140,527
United States	4,170	4,638	4,775	4,234	4,420	4,421
World Total	135,200	131,410	141,083	141,218	144,955	144,948
Ending Stocks						
Algeria	1,458	1,217	1,178	1,304	1,154	1,154
Canada	1,195	983	1,950	1,217	1,217	1,217
European Union	6,069	5,071	5,641	5,609	5,413	5,456
Iran	1,348	1,418	618	1,418	1,418	1,218
Russia	848	726	932	1,622	1,222	1,222
Saudi Arabia	2,814	3,006	3,396	3,486	2,976	3,276
Ukraine	1,172	873	972	1,471	1,076	1,176
Others	6,481	5,418	7,400	5,979	7,003	6,874
Subtotal	21,385	18,712	22,087	22,106	21,479	21,593
United States	1,306	1,750	1,791	1,711	2,065	2,087
World Total	22,691	20,462	23,878	23,817	23,544	23,680

Regional Barley Imports, Production, Consumption, and Stocks

Thousand Metric Tons

	2011/12	2012/13	2013/14	2014/15	Oct 2015/16	Nov 2015/16
TY Imports						
North America	620	499	639	655	725	675
South America	851	1,064	887	1,060	985	985
European Union - 28	364	52	58	250	100	100
Other Europe	209	127	163	130	160	160
Former Soviet Union - 12	697	375	362	337	320	320
Middle East	12,543	13,906	12,537	12,210	10,660	11,260
North Africa	1,482	1,885	2,433	2,550	1,950	2,050
Sub-Saharan Africa	100	52	116	105	65	65
East Asia	3,924	3,663	6,320	11,081	8,325	8,325
South Asia	67	7	12	15	10	10
Oceania	19	9	46	35	25	25
Total	20,876	21,639	23,573	28,428	23,325	23,975
Production						
North America	11,749	13,812	15,506	11,622	12,851	12,851
South America	5,530	6,084	5,880	3,922	4,500	4,500
European Union - 28	51,883	54,875	59,667	60,427	59,806	60,697
Other Europe	1,189	1,188	1,151	1,270	1,287	1,287
Former Soviet Union - 12	32,227	25,958	29,153	35,784	32,550	31,850
Middle East	11,705	9,689	12,047	8,658	12,348	12,358
North Africa	4,410	3,306	4,725	4,109	5,409	5,409
Sub-Saharan Africa	2,099	2,283	2,521	2,602	2,447	2,447
East Asia	1,962	1,920	1,800	1,801	1,790	1,790
South Asia	2,275	2,155	2,459	2,538	2,307	2,307
Oceania	8,538	7,911	9,590	8,424	9,315	9,315
Total	133,567	129,181	144,499	141,157	144,610	144,811
Domestic Consumption						
North America	11,786	12,347	13,195	11,406	11,320	11,321
South America	3,077	3,327	3,553	3,485	3,540	3,540
European Union - 28	51,200	51,000	53,400	51,000	52,700	52,600
Other Europe	1,366	1,298	1,298	1,389	1,422	1,422
Former Soviet Union - 12	26,268	22,339	23,451	24,505	24,380	24,355
Middle East	22,016	22,435	24,410	21,896	23,506	23,756
North Africa	6,186	5,560	6,230	7,059	6,958	7,108
Sub-Saharan Africa	2,133	2,285	2,555	2,640	2,615	2,615
East Asia	5,580	5,806	8,009	12,955	10,000	10,000
South Asia	2,202	2,067	1,913	2,112	2,012	2,012
Oceania	3,650	3,425	3,250	3,050	3,050	3,050
Total	135,464	131,889	141,264	141,497	141,503	141,779
Ending Stocks						
North America	2,621	3,014	3,980	3,117	3,481	3,503
South America	547	685	963	877	797	797
European Union - 28	6,069	5,071	5,641	5,609	5,413	5,456
Other Europe	205	223	208	196	196	196
Former Soviet Union - 12	2,760	2,193	2,554	3,843	2,827	2,908
Middle East	5,940	5,736	5,788	5,958	5,958	5,995
North Africa	2,449	1,740	2,482	2,155	2,560	2,556
Sub-Saharan Africa	283	330	408	475	372	372
East Asia	961	737	848	775	934	890
South Asia	280	142	255	247	151	152
Oceania	576	591	751	565	855	855
Total	22,691	20,462	23,878	23,817	23,544	23,680

NOTES: Regional definitions appear on last page of this circular. Imports are reported on a trade year basis. All other data are reported using local marketing years.

World Sorghum Trade
October/September Year, Thousand Metric Tons

	2011/12	2012/13	2013/14	2014/15	2015/16 Oct	2015/16 Nov
TY Exports						
Argentina	2,163	3,059	953	954	1,500	1,500
Australia	1,185	1,425	405	1,700	900	900
China	36	27	11	25	25	25
India	132	231	89	50	100	100
Kenya	16	32	51	40	30	30
Nigeria	75	50	50	100	50	50
Ukraine	113	124	229	150	150	150
Others	180	209	240	190	130	130
Subtotal	3,900	5,157	2,028	3,209	2,885	2,885
United States	1,549	2,136	5,717	9,249	11,000	7,500
World Total	5,449	7,293	7,745	12,458	13,885	10,385
TY Imports						
Chile	544	404	109	100	100	100
China	84	631	4,161	10,162	11,000	7,000
Colombia	592	591	104	50	50	50
Ethiopia	30	50	50	75	50	50
European Union	126	291	186	130	100	100
Japan	1,481	1,897	1,003	903	1,000	1,000
Kenya	74	102	94	100	100	100
Mexico	1,369	1,793	162	29	50	500
South Sudan	13	6	125	75	50	50
Sudan	125	175	75	75	75	75
Others	650	674	685	307	305	305
Subtotal	5,088	6,614	6,754	12,006	12,880	9,330
Unaccounted	358	436	988	425	1,005	1,055
United States	3	243	3	27	0	0
World Total	5,449	7,293	7,745	12,458	13,885	10,385

TY=Trade Year, see Endnotes.

World Sorghum Production, Consumption, and Stocks
Local Marketing Years, Thousand Metric Tons

	2011/12	2012/13	2013/14	2014/15	2015/16 Oct	2015/16 Nov
Production						
Argentina	4,200	4,700	4,400	3,500	4,500	4,500
Australia	2,239	2,230	1,282	2,104	2,100	2,100
Brazil	2,222	2,102	1,890	2,000	2,000	2,000
Burkina	1,500	1,924	1,880	1,836	1,900	1,900
Cameroon	1,150	1,100	1,150	1,150	1,150	1,150
Chad	648	1,172	745	900	900	900
China	2,051	2,556	2,700	2,600	2,600	2,600
Ethiopia	3,951	3,604	4,114	4,000	3,800	3,800
India	5,979	5,281	5,542	5,050	5,500	5,500
Mali	1,191	1,212	820	1,300	1,300	1,300
Mexico	6,425	6,174	8,500	6,270	7,800	7,150
Niger	807	1,376	1,287	1,000	1,100	1,100
Nigeria	6,900	5,943	6,592	6,700	6,150	6,150
Sudan	4,605	4,524	2,249	6,281	5,500	5,500
Tanzania	807	839	832	840	840	840
Others	7,131	6,675	7,036	6,683	6,817	6,832
Subtotal	51,806	51,412	51,019	52,214	53,957	53,322
United States	5,410	6,293	9,966	10,988	14,569	15,083
World Total	57,216	57,705	60,985	63,202	68,526	68,405
Total Consumption						
Argentina	1,900	2,300	2,700	2,800	2,900	2,900
Australia	1,105	1,105	905	605	1,205	1,205
Brazil	2,175	2,300	2,000	2,000	1,900	1,900
Burkina	1,500	1,900	1,900	1,800	1,900	1,900
Cameroon	1,175	1,110	1,165	1,175	1,175	1,175
Chad	650	1,150	850	900	900	900
China	2,200	3,200	6,800	12,600	13,400	9,700
Ethiopia	3,700	3,700	4,200	4,100	3,900	3,900
India	6,000	5,150	5,200	5,100	5,350	5,350
Japan	1,475	1,900	1,000	900	1,000	1,000
Mali	1,300	1,200	950	1,200	1,300	1,300
Mexico	8,100	8,100	8,300	6,600	7,700	7,600
Niger	950	1,200	1,300	1,100	1,100	1,100
Nigeria	6,800	5,900	6,550	6,650	6,050	6,050
Sudan	4,500	4,700	2,550	6,000	5,800	5,800
Others	9,547	9,098	8,478	8,135	8,056	8,056
Subtotal	54,561	52,816	55,918	61,627	64,664	61,728
United States	3,916	4,796	4,127	2,429	3,048	5,842
World Total	58,477	57,612	60,045	64,056	67,712	67,570
Ending Stocks						
Argentina	164	781	1,202	802	802	802
Brazil	472	272	151	138	231	228
China	366	326	376	513	526	388
India	206	109	364	264	348	314
Mexico	418	285	647	339	726	389
Nigeria	215	208	200	150	200	200
Sudan	609	588	357	708	478	478
Others	1,632	1,804	1,537	1,462	1,397	1,408
Subtotal	4,082	4,373	4,834	4,376	4,708	4,207
United States	583	385	864	468	1,066	1,472
World Total	4,665	4,758	5,698	4,844	5,774	5,679

Regional Sorghum Imports, Production, Consumption, and Stocks

Thousand Metric Tons

	2011/12	2012/13	2013/14	2014/15	Oct 2015/16	Nov 2015/16
TY Imports						
North America	1,372	2,036	165	56	50	500
South America	1,199	1,071	239	185	185	185
European Union - 28	126	291	186	130	100	100
Other Europe	0	0	0	0	0	0
Middle East	101	194	231	50	50	50
North Africa	54	0	41	5	5	5
Sub-Saharan Africa	557	586	557	457	405	405
East Asia	1,655	2,650	5,281	11,120	12,055	8,055
Southeast Asia	13	18	41	15	15	15
Others	14	11	16	15	15	15
Total	5,091	6,857	6,757	12,033	12,880	9,330
Production						
North America	11,835	12,467	18,466	17,258	22,369	22,233
Central America	312	339	335	335	335	335
Caribbean	92	92	94	94	94	94
South America	7,246	7,495	7,081	6,350	7,422	7,422
European Union - 28	671	473	703	878	747	747
Middle East	764	814	789	692	635	635
North Africa	847	763	755	756	756	756
Sub-Saharan Africa	24,802	24,783	22,782	26,701	25,589	25,604
East Asia	2,054	2,560	2,704	2,604	2,604	2,604
South Asia	6,124	5,426	5,687	5,195	5,645	5,645
Southeast Asia	54	55	57	55	55	55
Oceania	2,239	2,230	1,282	2,104	2,100	2,100
Others	176	208	250	180	175	175
Total	57,216	57,705	60,985	63,202	68,526	68,405
Domestic Consumption						
North America	12,016	12,896	12,427	9,029	10,748	13,442
Central America	320	325	325	330	340	340
Caribbean	92	92	94	94	94	94
South America	6,104	6,076	5,789	5,797	5,897	5,897
European Union - 28	760	795	880	995	845	845
Middle East	789	1,052	894	879	685	685
North Africa	908	756	794	756	756	756
Sub-Saharan Africa	24,850	25,038	23,500	26,669	26,049	26,049
East Asia	3,771	5,221	7,921	13,560	14,460	10,760
South Asia	6,155	5,305	5,360	5,260	5,510	5,510
Southeast Asia	68	68	61	90	65	65
Oceania	1,105	1,105	905	605	1,205	1,205
Others	55	80	25	30	30	30
Total	56,993	58,809	58,975	64,094	66,684	65,678
Ending Stocks						
North America	1,001	670	1,511	807	1,792	1,861
Central America	23	29	32	32	22	22
South America	717	1,145	1,426	1,016	1,091	1,081
European Union - 28	14	5	19	19	16	16
Middle East	56	65	47	35	35	35
North Africa	60	66	68	73	78	78
Sub-Saharan Africa	1,890	2,037	1,557	1,786	1,581	1,596
East Asia	451	413	466	605	614	479
South Asia	206	109	364	264	348	314
Oceania	230	195	187	186	181	181
Others	17	24	21	21	16	16
Total	4,665	4,758	5,698	4,844	5,774	5,679

NOTES: Regional definitions appear on last page of this circular. Imports are reported on a trade year basis. All other data are reported using local marketing years.

World Oats Trade
October/September Year, Thousand Metric Tons

	2011/12	2012/13	2013/14	2014/15	2015/16 Oct	2015/16 Nov
TY Exports						
Argentina	13	2	2	2	5	5
Australia	174	240	270	250	350	350
Canada	1,763	1,351	1,732	1,726	1,600	1,600
Chile	106	42	48	100	100	100
European Union	176	126	291	225	150	150
Russia	18	4	6	15	10	10
Ukraine	2	2	6	45	10	10
Others	7	10	14	8	10	10
Subtotal	2,259	1,777	2,369	2,371	2,235	2,235
United States	28	18	29	23	30	30
World Total	2,287	1,795	2,398	2,394	2,265	2,265
TY Imports						
Algeria	9	7	12	15	10	10
Bosnia and Herzegovina	3	2	3	5	5	5
Canada	11	9	26	10	10	10
China	68	87	116	162	250	250
Colombia	1	1	2	5	5	5
Ecuador	22	19	21	20	20	20
European Union	3	4	3	5	5	5
Japan	54	51	46	47	50	50
Mexico	134	111	93	100	100	100
Norway	49	36	38	5	40	40
Serbia	2	2	2	5	5	5
South Africa	11	11	19	50	25	25
Switzerland	56	44	51	49	50	50
Turkey	4	0	0	5	5	5
Uruguay	8	6	6	5	5	5
Others	7	0	1	0	0	0
Subtotal	442	390	439	488	585	585
Unaccounted	115	50	93	147	80	80
United States	1,730	1,355	1,866	1,759	1,600	1,600
World Total	2,287	1,795	2,398	2,394	2,265	2,265

TY=Trade Year, see Endnotes.

World Oats Production, Consumption, and Stocks
Local Marketing Years, Thousand Metric Tons

	2011/12	2012/13	2013/14	2014/15	2015/16 Oct	2015/16 Nov
Production						
Algeria	67	110	110	110	110	110
Argentina	345	496	445	525	485	485
Australia	1,262	1,121	1,255	1,096	1,300	1,300
Belarus	448	422	352	470	400	400
Brazil	354	361	380	300	300	300
Canada	3,158	2,830	3,906	2,979	3,310	3,350
Chile	451	680	610	500	760	760
China	600	600	580	600	600	600
European Union	7,927	7,909	8,386	7,849	7,443	7,719
Kazakhstan	258	200	305	226	250	250
Mexico	51	84	90	90	90	90
Norway	231	232	214	236	236	236
Russia	5,332	4,027	4,932	5,267	5,000	5,000
Turkey	218	210	210	210	210	210
Ukraine	506	630	467	610	450	375
Others	372	315	328	316	337	351
Subtotal	21,580	20,227	22,570	21,384	21,281	21,536
United States	728	892	938	1,019	1,300	1,300
World Total	22,308	21,119	23,508	22,403	22,581	22,836
Total Consumption						
Algeria	75	119	118	126	120	120
Argentina	350	500	425	525	500	500
Australia	1,100	925	950	875	900	900
Belarus	450	400	375	450	400	400
Brazil	350	350	375	300	290	290
Canada	1,361	1,592	1,660	1,676	1,650	1,650
Chile	325	575	575	450	650	650
China	625	675	700	750	875	875
European Union	7,800	7,700	8,075	7,675	7,475	7,675
Kazakhstan	225	225	275	225	250	250
Mexico	185	195	185	190	190	190
Norway	270	295	245	245	270	270
Russia	5,000	4,300	4,900	5,200	5,100	5,100
Turkey	215	215	215	215	215	215
Ukraine	500	600	475	600	450	375
Others	519	451	497	501	502	516
Subtotal	19,589	19,214	20,265	19,966	19,879	20,018
United States	2,499	2,743	2,757	2,424	2,828	2,828
World Total	22,088	21,957	23,022	22,390	22,707	22,846
Ending Stocks						
Argentina	55	49	67	62	42	42
Australia	134	60	105	76	126	126
Canada	805	446	1,054	681	751	791
Chile	23	62	46	35	45	45
China	127	139	135	147	110	122
European Union	795	901	900	859	687	758
Russia	485	203	229	287	176	177
Others	225	221	199	180	200	176
Subtotal	2,649	2,081	2,735	2,327	2,137	2,237
United States	797	527	359	780	860	860
World Total	3,446	2,608	3,094	3,107	2,997	3,097

Regional Oats Imports, Production, Consumption, and Stocks

Thousand Metric Tons

	2011/12	2012/13	2013/14	2014/15	Oct 2015/16	Nov 2015/16
TY Imports						
North America	1,875	1,475	1,985	1,869	1,710	1,710
South America	31	26	29	30	30	30
European Union - 28	3	4	3	5	5	5
Other Europe	110	84	94	64	100	100
Former Soviet Union - 12	7	0	1	0	0	0
Middle East	4	0	0	5	5	5
North Africa	9	7	12	15	10	10
Sub-Saharan Africa	11	11	19	50	25	25
East Asia	122	138	162	209	300	300
Oceania	0	0	0	0	0	0
Total	2,172	1,745	2,305	2,247	2,185	2,185
Production						
North America	3,937	3,806	4,934	4,088	4,700	4,740
South America	1,191	1,577	1,478	1,353	1,592	1,606
European Union - 28	7,927	7,909	8,386	7,849	7,443	7,719
Other Europe	373	365	348	369	372	372
Former Soviet Union - 12	6,549	5,285	6,062	6,579	6,106	6,031
Middle East	218	210	210	210	210	210
North Africa	163	166	166	166	166	166
Sub-Saharan Africa	57	60	59	55	55	55
East Asia	602	602	582	602	601	601
Oceania	1,291	1,139	1,283	1,132	1,336	1,336
Total	22,308	21,119	23,508	22,403	22,581	22,836
Domestic Consumption						
North America	4,045	4,530	4,602	4,290	4,668	4,668
South America	1,092	1,490	1,452	1,335	1,517	1,531
European Union - 28	7,800	7,700	8,075	7,675	7,475	7,675
Other Europe	478	474	429	433	467	467
Former Soviet Union - 12	6,180	5,531	6,032	6,481	6,206	6,131
Middle East	215	215	215	215	215	215
North Africa	172	175	174	182	176	176
Sub-Saharan Africa	53	72	95	105	80	80
East Asia	685	730	750	800	925	925
Oceania	1,129	943	978	911	936	936
Total	21,849	21,860	22,802	22,427	22,665	22,804
Ending Stocks						
North America	1,605	974	1,416	1,464	1,614	1,654
South America	91	129	130	109	104	104
European Union - 28	795	901	900	859	687	758
Other Europe	48	27	41	38	53	43
Former Soviet Union - 12	592	332	345	393	278	268
Middle East	17	12	7	7	7	7
North Africa	1	1	1	1	1	1
Sub-Saharan Africa	29	28	11	11	11	11
East Asia	134	144	138	149	116	125
Oceania	134	60	105	76	126	126
Total	3,446	2,608	3,094	3,107	2,997	3,097

NOTES: Regional definitions appear on last page of this circular. Imports are reported on a trade year basis. All other data are reported using local marketing years.

World Rye Trade
October/September Year, Thousand Metric Tons

	2011/12	2012/13	2013/14	2014/15	2015/16 Oct	2015/16 Nov
TY Exports						
Belarus	25	25	5	5	5	5
Canada	159	178	97	89	100	100
European Union	59	122	201	175	150	150
Russia	284	78	83	110	100	100
Ukraine	9	16	59	25	20	20
Others	4	0	0	0	0	0
Subtotal	540	419	445	404	375	375
United States	8	7	6	3	5	5
World Total	548	426	451	407	380	380
TY Imports						
European Union	302	68	96	90	50	50
Israel	11	34	33	25	25	25
Japan	46	27	37	22	25	25
Korea, South	11	12	8	4	10	10
Norway	11	21	16	15	15	15
Russia	0	25	5	5	5	5
Switzerland	2	9	6	5	5	5
Others	9	2	1	5	0	0
Subtotal	392	198	202	171	135	135
Unaccounted	-18	7	45	-26	45	45
United States	174	221	204	262	200	200
World Total	548	426	451	407	380	380

TY=Trade Year, see Endnotes.

World Rye Production, Consumption, and Stocks
Local Marketing Years, Thousand Metric Tons

	2011/12	2012/13	2013/14	2014/15	2015/16 Oct	2015/16 Nov
Production						
Belarus	801	1,082	648	950	800	800
Canada	241	337	223	218	230	230
Chile	59	62	60	47	71	71
European Union	6,900	8,763	10,157	8,854	7,483	7,673
Russia	2,967	2,132	3,360	3,279	3,300	3,300
Turkey	366	370	350	350	350	350
Ukraine	579	676	638	475	350	375
Others	181	182	174	236	185	185
Subtotal	12,094	13,604	15,610	14,409	12,769	12,984
United States	154	166	194	183	292	292
World Total	12,248	13,770	15,804	14,592	13,061	13,276
Total Consumption						
Argentina	45	40	52	97	56	56
Belarus	750	1,000	650	950	800	800
Canada	101	127	107	134	123	123
Chile	59	62	60	47	71	71
European Union	7,400	8,700	9,650	8,900	7,800	7,800
Kazakhstan	30	50	40	65	50	50
Norway	27	26	28	27	27	27
Russia	2,850	2,000	3,100	3,250	3,200	3,200
Turkey	375	375	350	350	350	350
Ukraine	625	625	625	475	375	400
Others	171	169	156	125	132	132
Subtotal	12,404	13,204	14,823	14,417	13,014	13,039
United States	311	387	424	406	467	467
World Total	12,715	13,591	15,247	14,823	13,481	13,506
Ending Stocks						
Belarus	110	167	160	155	150	150
Canada	25	46	44	42	49	49
European Union	747	795	1,210	1,082	665	855
Kazakhstan	3	3	6	2	2	2
Russia	129	153	345	265	270	270
Turkey	24	18	18	23	23	23
Ukraine	132	166	128	106	61	61
Others	5	7	4	1	4	1
Subtotal	1,175	1,355	1,915	1,676	1,224	1,411
United States	11	10	7	15	50	50
World Total	1,186	1,365	1,922	1,691	1,274	1,461

Regional Rye Imports, Production, Consumption, and Stocks

Thousand Metric Tons

	2011/12	2012/13	2013/14	2014/15	Oct 2015/16	Nov 2015/16
TY Imports						
North America	174	221	204	262	200	200
South America	0	0	0	0	0	0
European Union - 28	302	68	96	90	50	50
Other Europe	14	32	23	20	20	20
Former Soviet Union - 12	5	25	5	5	5	5
Middle East	14	34	33	30	25	25
Sub-Saharan Africa	0	0	0	0	0	0
East Asia	57	39	45	26	35	35
Oceania	0	0	0	0	0	0
Total	566	419	406	433	335	335
Production						
North America	395	503	417	401	522	522
South America	107	105	115	147	130	130
European Union - 28	6,900	8,763	10,157	8,854	7,483	7,673
Other Europe	62	46	53	52	51	51
Former Soviet Union - 12	4,375	3,940	4,689	4,765	4,500	4,525
Middle East	366	370	350	350	350	350
Sub-Saharan Africa	3	3	3	3	3	3
East Asia	0	0	0	0	0	0
Oceania	40	40	20	20	22	22
Total	12,248	13,770	15,804	14,592	13,061	13,276
Domestic Consumption						
North America	412	514	531	540	590	590
South America	107	105	115	147	130	130
European Union - 28	7,400	8,700	9,650	8,900	7,800	7,800
Other Europe	76	78	77	72	71	71
Former Soviet Union - 12	4,255	3,675	4,415	4,740	4,425	4,450
Middle East	386	409	383	375	375	375
Sub-Saharan Africa	2	3	3	3	3	3
East Asia	66	37	48	29	35	35
Oceania	40	40	20	20	22	22
Total	12,744	13,561	15,242	14,826	13,451	13,476
Ending Stocks						
North America	36	56	51	57	99	99
South America	0	0	0	0	0	0
European Union - 28	747	795	1,210	1,082	665	855
Other Europe	0	0	0	0	0	0
Former Soviet Union - 12	374	489	639	528	483	483
Middle East	24	18	18	23	23	23
Sub-Saharan Africa	0	0	0	0	0	0
East Asia	5	7	4	1	4	1
Oceania	0	0	0	0	0	0
Total	1,186	1,365	1,922	1,691	1,274	1,461

NOTES: Regional definitions appear on last page of this circular. Imports are reported on a trade year basis. All other data are reported using local marketing years.



HISTORICAL DATA SERIES FOR SELECTED REGIONS AND COUNTRIES

CONTENTS

European Union: Grain Supply and Demand	36
China: Grain Supply and Demand	37
Other Europe: Grain Supply and Demand	38
Former Soviet Union: Grain Supply and Demand.....	39
Wheat Supply and Disappearance: Selected Exporters	43
Corn Supply and Disappearance: Selected Exporters.....	45
Barley Supply and Disappearance: Selected Exporters	47
Sorghum Supply and Disappearance: Selected Exporters	48
U.S. Grains: Supply and Distribution.....	49
Total Wheat and Coarse Grains: Supply and Demand	50
World Wheat and Coarse Grains: Supply and Demand	51
World Corn and Barley: Supply and Demand	52
World Rice: Supply and Demand	53

European Union: Grain Supply and Demand

Wheat and Coarse Grains Millions of Metric Tons/Hectares

	Area Harvested	Yield	Production	Imports	Exports	Feed Dom.	Domestic Consumption	Ending Stocks
Wheat								
2004/05	26.2	5.6	147.7	7.1	14.7	59.3	123.9	28.3
2005/06	26.0	5.1	132.9	6.8	15.7	63.0	128.2	24.1
2006/07	24.7	5.1	125.7	5.2	13.9	60.2	126.2	14.8
2007/08	24.9	4.9	120.8	6.8	12.4	52.4	117.2	12.8
2008/09	26.8	5.7	151.9	7.7	25.4	60.5	127.6	19.4
2009/10	26.0	5.4	139.7	5.4	22.3	57.5	125.6	16.6
2010/11	26.0	5.3	136.7	4.6	23.1	52.5	122.8	11.9
2011/12	25.8	5.3	138.2	7.4	16.7	57.5	127.2	13.5
2012/13	26.0	5.2	133.9	5.3	22.8	51.0	119.3	10.7
2013/14	25.9	5.6	144.4	4.0	32.0	49.0	117.3	9.8
2014/15	26.8	5.8	156.5	6.0	35.4	54.5	123.5	13.3
2015/16	26.7	5.9	157.3	6.0	33.5	58.0	126.8	16.3
Coarse Grains								
2004/05	33.9	5.0	169.1	3.0	4.8	118.9	155.2	25.6
2005/06	33.2	4.5	149.5	2.7	4.3	112.4	150.7	22.8
2006/07	32.4	4.3	140.0	8.1	4.5	112.9	150.6	15.7
2007/08	32.6	4.3	138.7	20.3	4.5	121.6	157.1	13.1
2008/09	34.0	4.8	164.9	3.1	5.7	116.1	154.2	21.3
2009/10	32.9	4.8	157.6	2.9	3.0	114.8	152.4	26.3
2010/11	30.2	4.7	142.9	8.5	6.2	116.9	154.6	16.9
2011/12	30.2	5.0	149.9	7.0	6.5	113.2	151.5	15.7
2012/13	31.4	4.7	145.9	11.8	7.4	113.7	153.1	13.1
2013/14	31.4	5.1	158.9	16.2	8.6	122.4	164.1	15.5
2014/15	30.8	5.5	170.5	9.0	14.0	121.5	163.3	17.8
2015/16	30.4	4.9	150.5	16.4	9.8	118.5	160.4	14.5
Wheat and Coarse Grains								
2004/05	60.1	5.3	316.8	10.0	19.5	178.2	279.1	54.0
2005/06	59.1	4.8	282.3	9.4	20.0	175.4	278.9	46.9
2006/07	57.0	4.7	265.7	13.2	18.5	173.1	276.8	30.5
2007/08	57.5	4.5	259.5	27.1	16.9	174.1	274.2	25.9
2008/09	60.9	5.2	316.9	10.8	31.1	176.6	281.8	40.7
2009/10	58.9	5.0	297.3	8.2	25.3	172.3	278.0	42.9
2010/11	56.2	5.0	279.5	13.1	29.3	169.4	277.5	28.8
2011/12	56.0	5.1	288.1	14.3	23.3	170.7	278.7	29.3
2012/13	57.3	4.9	279.9	17.1	30.1	164.7	272.3	23.8
2013/14	57.3	5.3	303.3	20.2	40.7	171.4	281.4	25.3
2014/15	57.5	5.7	327.0	15.0	49.4	176.0	286.8	31.2
2015/16	57.1	5.4	307.7	22.4	43.3	176.5	287.2	30.8

China: Grain Supply and Demand

Wheat and Coarse Grains Millions of Metric Tons/Hectares

	Area Harvested	Yield	Production	Imports	Exports	Feed Dom.	Domestic Consumption	Ending Stocks
Wheat								
2004/05	21.6	4.3	92.0	6.7	1.2	4.0	102.0	38.8
2005/06	22.8	4.3	97.4	1.1	1.4	3.5	101.5	34.5
2006/07	23.6	4.6	108.5	0.4	2.8	4.0	102.0	38.6
2007/08	23.7	4.6	109.3	0.0	2.8	8.0	106.0	39.1
2008/09	23.6	4.8	112.5	0.5	0.7	8.0	105.5	45.8
2009/10	24.3	4.7	115.1	1.4	0.9	10.0	107.0	54.4
2010/11	24.3	4.7	115.2	0.9	0.9	13.0	110.5	59.1
2011/12	24.3	4.8	117.4	2.9	1.0	24.0	122.5	55.9
2012/13	24.3	5.0	121.0	3.0	1.0	25.0	125.0	54.0
2013/14	24.1	5.1	121.9	6.8	0.9	16.0	116.5	65.3
2014/15	24.1	5.2	126.2	1.9	0.8	17.0	118.5	74.1
2015/16	24.2	5.4	130.0	2.0	1.0	15.0	118.0	87.1
Coarse Grains								
2004/05	28.0	4.9	138.3	2.1	7.6	100.3	141.1	37.6
2005/06	28.8	5.1	147.8	2.3	3.8	103.5	147.1	36.9
2006/07	31.1	5.1	159.0	1.2	5.5	105.0	153.5	38.0
2007/08	31.9	5.0	159.2	1.2	0.9	106.7	157.9	39.5
2008/09	32.2	5.4	172.4	1.7	0.2	109.1	161.2	52.2
2009/10	33.4	5.1	169.8	3.8	0.2	119.1	173.3	52.3
2010/11	34.6	5.3	183.8	2.7	0.2	128.8	188.4	50.1
2011/12	35.5	5.6	198.6	7.9	0.1	132.0	196.2	60.4
2012/13	37.1	5.7	212.2	5.6	0.1	146.1	209.7	68.4
2013/14	38.4	5.9	225.1	12.4	0.0	157.8	223.6	82.3
2014/15	39.1	5.7	222.2	25.7	0.0	158.5	228.6	101.5
2015/16	39.8	5.8	231.5	17.3	0.1	162.4	234.8	115.4
Wheat and Coarse Grains								
2004/05	49.6	4.6	230.2	8.8	8.8	104.3	243.1	76.4
2005/06	51.6	4.8	245.3	3.4	5.2	107.0	248.6	71.4
2006/07	54.7	4.9	267.4	1.5	8.2	109.0	255.5	76.6
2007/08	55.6	4.8	268.5	1.2	3.7	114.7	263.9	78.6
2008/09	55.8	5.1	284.9	2.1	0.9	117.1	266.7	98.0
2009/10	57.6	4.9	284.9	5.2	1.1	129.1	280.3	106.7
2010/11	58.9	5.1	299.0	3.6	1.1	141.8	298.9	109.2
2011/12	59.8	5.3	316.0	10.9	1.1	156.0	318.7	116.3
2012/13	61.3	5.4	333.2	8.6	1.1	171.1	334.7	122.3
2013/14	62.5	5.6	347.0	19.2	0.9	173.8	340.1	147.5
2014/15	63.1	5.5	348.3	27.6	0.8	175.5	347.1	175.6
2015/16	64.0	5.7	361.5	19.3	1.1	177.4	352.8	202.5

Other Europe: Grain Supply and Demand

Wheat and Coarse Grains Millions of Metric Tons/Hectares

	Area Harvested	Yield	Production	Imports	Exports	Feed Dom.	Domestic Consumpti	Ending Stocks
Wheat								
2004/05	1.1	4.3	4.6	1.4	0.3	0.9	5.2	1.3
2005/06	1.0	3.8	3.8	1.4	0.2	0.9	5.1	1.1
2006/07	1.0	3.6	3.5	1.5	0.3	0.7	4.6	1.2
2007/08	1.0	3.8	3.7	1.9	0.5	1.0	4.8	1.5
2008/09	0.9	4.4	4.0	1.7	0.4	1.2	5.1	1.7
2009/10	1.0	3.9	3.8	1.7	0.5	1.0	4.9	1.7
2010/11	0.9	3.7	3.2	1.7	0.6	0.8	4.7	1.3
2011/12	0.9	4.2	3.6	1.9	0.5	1.0	4.9	1.5
2012/13	0.9	4.0	3.4	1.7	0.7	1.0	4.7	1.1
2013/14	0.9	4.4	4.1	1.9	1.3	1.1	4.8	1.1
2014/15	0.9	4.2	3.9	1.7	0.7	1.1	4.8	1.2
2015/16	1.0	4.3	4.1	1.9	1.1	1.1	4.9	1.3
Coarse Grains								
2004/05	2.1	5.0	10.4	0.5	0.6	8.4	9.5	1.5
2005/06	2.1	4.8	10.1	0.6	1.3	8.5	9.7	1.3
2006/07	2.0	4.9	9.8	0.8	0.9	8.5	9.6	1.3
2007/08	2.0	3.4	6.9	0.9	0.1	6.8	7.9	1.1
2008/09	2.1	4.6	9.7	0.6	1.5	7.6	8.7	1.1
2009/10	2.0	4.9	9.7	0.7	1.4	7.5	8.7	1.4
2010/11	2.0	5.0	10.0	0.7	2.0	7.3	8.7	1.5
2011/12	2.1	4.6	9.5	0.8	2.4	7.0	8.4	1.0
2012/13	2.1	3.2	6.6	0.7	0.6	5.9	7.1	0.6
2013/14	2.0	4.4	8.8	0.9	1.8	6.3	7.7	0.8
2014/15	1.9	5.5	10.7	0.8	3.0	6.5	8.0	1.3
2015/16	1.9	4.4	8.4	0.9	1.7	6.5	8.0	0.8
Wheat and Coarse Grains								
2004/05	3.2	4.8	15.1	1.9	0.9	9.3	14.8	2.8
2005/06	3.1	4.5	13.9	2.0	1.4	9.4	14.8	2.4
2006/07	3.0	4.5	13.3	2.3	1.2	9.2	14.2	2.5
2007/08	3.0	3.5	10.6	2.7	0.6	7.8	12.6	2.6
2008/09	3.0	4.6	13.7	2.3	1.9	8.8	13.8	2.8
2009/10	3.0	4.5	13.5	2.4	1.9	8.5	13.7	3.2
2010/11	2.9	4.6	13.2	2.4	2.6	8.1	13.4	2.7
2011/12	2.9	4.5	13.1	2.7	2.8	8.1	13.2	2.5
2012/13	2.9	3.4	10.0	2.4	1.3	7.0	11.8	1.8
2013/14	2.9	4.4	12.9	2.8	3.1	7.4	12.5	1.9
2014/15	2.9	5.1	14.6	2.6	3.7	7.6	12.8	2.5
2015/16	2.9	4.4	12.6	2.8	2.8	7.7	12.9	2.1

Former Soviet Union: Grain Supply and Demand
Wheat and Coarse Grains Millions of Metric Tons/Hectares

	Area Harvested	Yield	Production	Imports	Exports	Feed Dom.	Domestic Consumpti	Ending Stocks
Wheat								
2009/10	52.6	2.2	114.0	5.4	37.3	26.5	78.3	25.8
2010/11	45.8	1.8	81.0	5.5	13.9	24.4	75.7	22.7
2011/12	49.7	2.3	115.0	8.0	39.7	28.3	80.0	26.0
2012/13	44.0	1.8	77.8	7.2	25.4	21.5	71.7	13.9
2013/14	47.7	2.2	103.9	7.4	37.1	22.8	72.9	15.1
2014/15	46.7	2.4	112.7	7.7	40.2	24.6	75.8	19.5
2015/16	48.7	2.4	117.0	7.1	45.5	25.4	77.5	20.6
Coarse Grains								
2009/10	27.2	2.5	67.6	0.4	15.0	39.0	55.0	7.4
2010/11	21.9	2.2	47.5	1.2	8.8	28.4	41.8	5.5
2011/12	27.0	2.9	78.6	1.0	24.6	38.6	54.4	6.2
2012/13	27.5	2.5	68.2	0.7	19.9	35.6	50.2	5.0
2013/14	29.4	3.0	87.6	0.8	30.9	40.0	55.6	7.0
2014/15	30.3	3.0	91.7	0.8	34.0	41.8	57.8	7.7
2015/16	28.8	2.9	83.2	0.8	28.2	41.1	57.3	6.3

Former Soviet Union: Grain Supply and Demand (Wheat)

Millions of Tons/Hectares

Country Mktg Year	Area Harvested	Yield	Production	MY Imports	MY Exports	Feed and Residual	Total Consumption	Ending Stocks
Former Soviet Union - 12								
Kazakhstan								
2012/13	12.4	0.8	9.8	0.0	6.3	2.0	6.8	2.9
2013/14	13.0	1.1	13.9	0.0	8.1	2.0	6.8	2.0
2014/15	11.9	1.1	13.0	0.6	5.5	2.0	6.8	3.2
2015/16	11.5	1.2	14.0	0.1	6.5	2.1	6.9	3.9
Russia								
2012/13	21.3	1.8	37.7	1.2	11.3	11.9	33.6	5.0
2013/14	23.4	2.2	52.1	0.8	18.6	12.5	34.1	5.2
2014/15	23.6	2.5	59.1	0.3	22.8	13.0	35.5	6.3
2015/16	25.5	2.4	60.5	0.4	23.5	13.5	36.5	7.1
Ukraine								
2012/13	5.6	2.8	15.8	0.0	7.2	3.1	11.4	2.6
2013/14	6.6	3.4	22.3	0.1	9.8	3.4	11.5	3.7
2014/15	6.3	3.9	24.8	0.0	11.3	4.0	12.0	5.2
2015/16	7.0	3.9	27.0	0.1	15.0	4.5	12.5	4.7
Uzbekistan								
2012/13	1.4	4.8	6.7	1.9	0.4	1.7	8.0	1.6
2013/14	1.4	4.9	6.8	2.2	0.3	1.9	8.4	1.9
2014/15	1.4	5.1	7.2	2.2	0.2	2.2	8.9	2.2
2015/16	1.4	5.1	7.2	2.2	0.2	2.2	9.1	2.3
Other Former Soviet Union - 12								
2012/13	3.2	2.4	7.8	4.1	0.3	2.8	12.0	1.9
2013/14	3.4	2.6	8.8	4.3	0.4	3.0	12.1	2.4
2014/15	3.4	2.6	8.8	4.5	0.4	3.4	12.6	2.6
2015/16	3.3	2.5	8.3	4.5	0.3	3.1	12.5	2.6
Total Former Soviet Union - 12								
2012/13	44.0	1.8	77.8	7.2	25.4	21.5	71.7	13.9
2013/14	47.7	2.2	103.9	7.4	37.1	22.8	72.9	15.1
2014/15	46.7	2.4	112.7	7.7	40.2	24.6	75.8	19.5
2015/16	48.7	2.4	117.0	7.1	45.5	25.4	77.5	20.6

Former Soviet Union: Grain Supply and Demand (Barley)

Millions of Tons/Hectares

Country Mktg Year	Area Harvested	Yield	Production	MY Imports	MY Exports	Feed and Residual	Total Consumption	Ending Stocks
Former Soviet Union - 12								
Kazakhstan								
2012/13	1.6	0.9	1.5	0.0	0.2	1.2	1.4	0.2
2013/14	1.8	1.4	2.5	0.0	0.5	1.7	2.0	0.2
2014/15	1.9	1.3	2.4	0.0	0.5	1.6	1.9	0.2
2015/16	2.0	1.3	2.6	0.0	0.5	1.8	2.1	0.2
Russia								
2012/13	7.6	1.8	14.0	0.3	2.2	7.7	12.1	0.7
2013/14	8.0	1.9	15.4	0.2	2.7	8.3	12.7	0.9
2014/15	8.8	2.3	20.0	0.1	5.3	9.2	14.1	1.6
2015/16	8.2	2.0	16.7	0.1	3.7	8.7	13.5	1.2
Ukraine								
2012/13	3.3	2.1	6.9	0.0	2.1	3.5	5.1	0.9
2013/14	3.2	2.3	7.6	0.0	2.5	3.5	5.0	1.0
2014/15	3.2	3.0	9.5	0.0	4.5	3.0	4.5	1.5
2015/16	2.9	3.0	8.7	0.0	4.5	3.0	4.5	1.2
Uzbekistan								
2012/13	0.1	3.2	0.2	0.0	0.0	0.2	0.3	0.0
2013/14	0.1	3.2	0.2	0.0	0.0	0.2	0.3	0.0
2014/15	0.1	3.2	0.2	0.1	0.0	0.2	0.3	0.0
2015/16	0.1	3.2	0.2	0.1	0.0	0.3	0.3	0.0
Other Former Soviet Union - 12								
2012/13	1.2	2.8	3.3	0.1	0.0	2.7	3.5	0.4
2013/14	1.3	2.5	3.4	0.1	0.0	2.7	3.5	0.4
2014/15	1.4	2.7	3.7	0.2	0.1	2.9	3.7	0.5
2015/16	1.4	2.6	3.6	0.2	0.1	3.1	3.9	0.3
Total Former Soviet Union - 12								
2012/13	13.8	1.9	26.0	0.4	4.6	15.2	22.3	2.2
2013/14	14.5	2.0	29.2	0.3	5.7	16.4	23.5	2.6
2014/15	15.3	2.3	35.8	0.4	10.4	16.9	24.5	3.8
2015/16	14.6	2.2	31.9	0.3	8.8	16.9	24.4	2.9

Former Soviet Union: Grain Supply and Demand (Corn)

Millions of Tons/Hectares

Country Mktg Year	Area Harvested	Yield	Production	MY Imports	MY Exports	Feed and Residual	Total Consumption	Ending Stocks
Former Soviet Union - 12								
Kazakhstan								
2012/13	0.1	5.0	0.5	0.0	0.0	0.4	0.5	0.0
2013/14	0.1	5.3	0.6	0.0	0.0	0.5	0.6	0.0
2014/15	0.1	5.3	0.7	0.0	0.0	0.5	0.6	0.1
2015/16	0.1	5.0	0.5	0.0	0.0	0.5	0.6	0.0
Russia								
2012/13	1.9	4.2	8.2	0.1	1.9	5.6	6.4	0.3
2013/14	2.3	5.0	11.6	0.1	4.2	6.6	7.5	0.3
2014/15	2.6	4.4	11.3	0.1	3.2	7.2	8.1	0.4
2015/16	2.7	5.0	13.5	0.1	4.0	8.3	9.3	0.6
Ukraine								
2012/13	4.4	4.8	20.9	0.0	12.7	6.8	8.1	1.2
2013/14	4.8	6.4	30.9	0.1	20.0	8.3	9.7	2.5
2014/15	4.6	6.2	28.5	0.1	19.8	8.0	9.4	1.8
2015/16	4.0	5.8	23.0	0.1	15.0	7.0	8.4	1.4
Uzbekistan								
2012/13	0.0	3.4	0.1	0.0	0.0	0.1	0.1	0.0
2013/14	0.0	3.4	0.1	0.0	0.0	0.1	0.2	0.0
2014/15	0.0	3.4	0.1	0.0	0.0	0.1	0.2	0.0
2015/16	0.0	3.4	0.1	0.0	0.0	0.1	0.1	0.0
Other Former Soviet Union - 12								
2012/13	1.0	2.7	2.6	0.2	0.4	2.6	3.0	0.5
2013/14	1.0	3.8	3.7	0.3	0.6	2.9	3.2	0.6
2014/15	0.9	3.7	3.2	0.3	0.3	2.9	3.2	0.7
2015/16	0.9	3.1	2.8	0.4	0.1	2.8	3.2	0.6
Total Former Soviet Union - 12								
2012/13	7.4	4.4	32.3	0.3	15.0	15.5	18.1	2.0
2013/14	8.3	5.7	46.9	0.5	24.8	18.4	21.1	3.4
2014/15	8.2	5.3	43.7	0.5	23.3	18.7	21.4	2.9
2015/16	7.7	5.2	39.9	0.5	19.1	18.7	21.6	2.6

Wheat Supply and Disappearance: Selected Exporters
Million Metric Tons/Hectares

Country Mktg Year	Area Harvested	Yield	Production	MY Imports	MY Exports	Feed and Residual	Total Consumption	Ending Stocks
Wheat Competitors								
Argentina								
2011/12	5.2	3.0	15.5	0.0	12.9	0.1	6.0	0.7
2012/13	3.6	2.6	9.3	0.0	3.6	0.3	6.2	0.3
2013/14	3.5	3.0	10.5	0.0	2.3	0.1	6.1	2.5
2014/15	4.2	3.0	12.5	0.0	5.5	0.3	6.4	3.2
2015/16	3.5	3.0	10.5	0.0	5.0	0.1	6.2	2.6
Australia								
2011/12	13.9	2.2	29.9	0.1	24.7	3.2	6.5	7.1
2012/13	13.0	1.8	22.9	0.1	18.6	3.4	6.7	4.7
2013/14	12.6	2.0	25.3	0.2	18.6	3.6	7.0	4.6
2014/15	13.8	1.7	23.7	0.2	16.6	4.1	7.5	4.3
2015/16	13.8	1.9	26.0	0.2	18.0	4.0	7.4	5.0
Canada								
2011/12	8.6	3.0	25.3	0.5	17.4	4.7	9.9	5.9
2012/13	9.5	2.9	27.2	0.5	19.0	4.3	9.5	5.1
2013/14	10.4	3.6	37.5	0.4	23.3	4.2	9.4	10.4
2014/15	9.5	3.1	29.4	0.5	24.1	3.8	9.1	7.1
2015/16	9.6	2.7	26.0	0.5	20.0	3.8	9.0	4.6
European Union								
2011/12	25.8	5.3	138.2	7.4	16.7	57.5	127.2	13.5
2012/13	26.0	5.2	133.9	5.3	22.8	51.0	119.3	10.7
2013/14	25.9	5.6	144.4	4.0	32.0	49.0	117.3	9.8
2014/15	26.8	5.8	156.5	6.0	35.4	54.5	123.5	13.3
2015/16	26.7	5.9	157.3	6.0	33.5	58.0	126.8	16.3
Kazakhstan								
2011/12	13.7	1.7	22.7	0.0	11.8	2.6	7.6	6.2
2012/13	12.4	0.8	9.8	0.0	6.3	2.0	6.8	2.9
2013/14	13.0	1.1	13.9	0.0	8.1	2.0	6.8	2.0
2014/15	11.9	1.1	13.0	0.6	5.5	2.0	6.8	3.2
2015/16	11.5	1.2	14.0	0.1	6.5	2.1	6.9	3.9
Russia								
2011/12	24.8	2.3	56.2	0.6	21.6	15.5	38.0	10.9
2012/13	21.3	1.8	37.7	1.2	11.3	11.9	33.6	5.0
2013/14	23.4	2.2	52.1	0.8	18.6	12.5	34.1	5.2
2014/15	23.6	2.5	59.1	0.3	22.8	13.0	35.5	6.3
2015/16	25.5	2.4	60.5	0.4	23.5	13.5	36.5	7.1

Wheat Supply and Disappearance: Selected Exporters (Continued)

Million Metric Tons/Hectares

Country Mktg Year	Area Harvested	Yield	Production	MY Imports	MY Exports	Feed and Residual	Total Consumption	Ending Stocks
Ukraine								
2011/12	6.7	3.4	22.3	0.1	5.4	6.1	15.0	5.4
2012/13	5.6	2.8	15.8	0.0	7.2	3.1	11.4	2.6
2013/14	6.6	3.4	22.3	0.1	9.8	3.4	11.5	3.7
2014/15	6.3	3.9	24.8	0.0	11.3	4.0	12.0	5.2
2015/16	7.0	3.9	27.0	0.1	15.0	4.5	12.5	4.7
Total Wheat Competitors								
2011/12	98.6	3.1	310.2	8.6	110.6	89.7	210.1	49.7
2012/13	91.4	2.8	256.6	7.1	88.7	76.0	193.5	31.3
2013/14	95.4	3.2	306.1	5.5	112.6	74.8	192.1	38.1
2014/15	96.1	3.3	318.9	7.6	121.2	81.7	200.8	42.6
2015/16	97.6	3.3	321.3	7.1	121.5	86.0	205.2	44.3

Corn Supply and Disappearance: Selected Exporters
Million Metric Tons/Hectares

Country Mktg Year	Area Harvested	Yield	Production	MY Imports	MY Exports	Feed and Residual	Total Consumption	Ending Stocks
Argentina								
2007/08	3.4	6.5	22.0	0.0	14.8	4.9	6.8	2.1
2008/09	2.5	6.2	15.5	0.0	10.3	4.5	6.4	0.9
2009/10	3.0	8.3	25.0	0.0	16.5	5.0	6.9	2.5
2010/11	3.8	6.7	25.2	0.0	16.3	5.3	7.3	4.0
2011/12	3.6	5.8	21.0	0.0	17.1	4.8	7.0	0.9
2012/13	4.0	6.8	27.0	0.0	18.7	5.3	7.9	1.3
2013/14	3.4	7.6	26.0	0.0	17.1	5.8	8.8	1.4
2014/15	3.2	8.3	26.5	0.0	17.0	6.1	9.4	1.5
2015/16	3.2	8.0	25.6	0.0	16.0	6.5	10.0	1.1
Brazil								
2007/08	14.7	4.0	58.6	0.7	7.8	37.5	44.0	10.6
2008/09	14.1	3.6	51.0	1.1	7.1	38.5	45.5	10.1
2009/10	12.9	4.3	56.1	0.4	11.6	41.5	48.5	6.5
2010/11	13.8	4.2	57.4	0.8	8.4	43.0	50.0	6.3
2011/12	15.2	4.8	73.0	0.8	24.3	44.0	51.5	4.2
2012/13	15.8	5.2	81.5	0.9	24.9	44.5	52.5	9.2
2013/14	15.8	5.1	80.0	0.8	21.0	46.0	55.0	14.0
2014/15	15.8	5.4	85.0	0.6	31.0	48.0	57.0	11.6
2015/16	15.8	5.2	81.5	0.6	25.0	50.0	59.0	9.7
China								
2007/08	29.5	5.2	152.3	0.0	0.5	106.0	150.0	38.4
2008/09	29.9	5.6	165.9	0.0	0.2	108.0	153.0	51.2
2009/10	31.2	5.3	164.0	1.3	0.2	118.0	165.0	51.3
2010/11	32.5	5.5	177.2	1.0	0.1	128.0	180.0	49.4
2011/12	33.5	5.7	192.8	5.2	0.1	131.0	188.0	59.3
2012/13	35.0	5.9	205.6	2.7	0.1	144.0	200.0	67.6
2013/14	36.3	6.0	218.5	3.3	0.0	150.0	208.0	81.3
2014/15	37.1	5.8	215.7	5.5	0.0	140.0	202.0	100.5
2015/16	37.9	5.9	225.0	3.0	0.1	150.0	214.0	114.4
South Africa								
2007/08	3.3	4.0	13.2	0.0	2.2	4.8	10.1	1.4
2008/09	2.9	4.3	12.6	0.0	1.7	4.7	10.3	2.0
2009/10	3.3	4.1	13.4	0.0	2.1	4.9	10.6	2.8
2010/11	2.9	3.8	10.9	0.4	2.4	5.0	10.7	1.0
2011/12	3.1	4.1	12.8	0.0	1.8	5.0	10.7	1.3
2012/13	3.2	3.8	12.4	0.1	2.1	5.1	11.0	0.7

Corn Supply and Disappearance: Selected Exporters (Continued)

Million Metric Tons/Hectares

Country Mktg Year	Area Harvested	Yield	Production	MY Imports	MY Exports	Feed and Residual	Total Consumption	Ending Stocks
2013/14	3.1	4.9	14.9	0.1	2.0	5.5	11.5	2.2
2014/15	3.0	3.5	10.8	0.6	0.6	5.5	11.2	1.8
2015/16	3.0	4.3	12.8	0.0	1.3	5.5	11.4	1.9
Total Corn Competitors								
2007/08	50.9	4.8	246.1	0.8	25.3	153.2	210.9	52.5
2008/09	49.4	5.0	245.0	1.2	19.3	155.7	215.2	64.2
2009/10	50.4	5.1	258.5	1.7	30.3	169.4	231.0	63.0
2010/11	52.9	5.1	270.8	2.2	27.3	181.3	248.0	60.7
2011/12	55.5	5.4	299.5	6.0	43.4	184.8	257.2	65.7
2012/13	58.1	5.6	326.5	3.7	45.8	198.9	271.4	78.7
2013/14	58.6	5.8	339.4	4.1	40.0	207.3	283.3	98.9
2014/15	59.1	5.7	338.0	6.7	48.6	199.6	279.6	115.4
2015/16	59.9	5.8	344.9	3.6	42.4	212.0	294.4	127.1

Barley Supply and Disappearance: Selected Exporters
Million Metric Tons/Hectares

Country Mktg Year	Area Harvested	Yield	Production	MY Imports	MY Exports	Feed and Residual	Total Consumption	Ending Stocks
Australia								
2007/08	4.9	1.5	7.2	0.0	3.4	2.1	3.1	1.7
2008/09	5.0	1.6	8.0	0.0	3.2	2.9	4.0	2.4
2009/10	4.4	1.8	7.9	0.0	3.9	3.3	4.5	1.9
2010/11	3.7	2.2	8.0	0.0	4.7	3.0	4.2	1.0
2011/12	3.7	2.2	8.2	0.0	5.4	2.1	3.3	0.5
2012/13	3.6	2.1	7.5	0.0	4.5	1.8	3.0	0.5
2013/14	3.8	2.4	9.2	0.0	6.2	1.5	2.8	0.7
2014/15	3.8	2.1	8.0	0.0	5.6	1.3	2.6	0.5
2015/16	4.0	2.2	8.9	0.0	6.0	1.3	2.6	0.8
Canada								
2007/08	4.0	2.8	10.9	0.1	3.0	6.4	7.8	1.6
2008/09	3.5	3.4	11.8	0.0	1.5	7.6	8.9	3.0
2009/10	2.9	3.3	9.5	0.0	1.3	7.5	8.7	2.5
2010/11	2.4	3.2	7.6	0.0	1.2	6.3	7.5	1.5
2011/12	2.4	3.3	7.9	0.0	1.3	5.7	6.9	1.2
2012/13	2.8	2.9	8.0	0.0	1.4	5.7	6.8	1.0
2013/14	2.7	3.9	10.2	0.0	1.6	6.5	7.7	2.0
2014/15	2.1	3.3	7.1	0.1	1.5	5.2	6.5	1.2
2015/16	2.4	3.2	7.6	0.1	1.5	5.0	6.2	1.2
European Union								
2007/08	13.9	4.2	57.8	0.3	3.8	38.9	54.5	5.7
2008/09	14.6	4.5	65.8	0.3	3.6	41.7	57.3	11.0
2009/10	14.0	4.5	62.4	0.1	1.1	41.7	56.8	15.6
2010/11	12.5	4.3	53.7	0.2	4.9	41.3	56.6	7.9
2011/12	11.9	4.3	51.9	0.5	3.0	35.8	51.2	6.1
2012/13	12.5	4.4	54.9	0.1	4.9	35.5	51.0	5.1
2013/14	12.4	4.8	59.7	0.0	5.7	38.0	53.4	5.6
2014/15	12.4	4.9	60.4	0.1	9.5	35.5	51.0	5.6
2015/16	12.4	4.9	60.7	0.3	8.5	37.0	52.6	5.5

Sorghum Supply and Disappearance: Selected Exporters
Million Metric Tons/Hectares

Country Mktg Year	Area Harvested	Yield	Production	MY Imports	MY Exports	Feed and Residual	Total Consumption	Ending Stocks
Argentina								
2007/08	0.6	4.7	2.9	0.0	1.2	1.0	1.2	0.7
2008/09	0.5	3.7	1.7	0.0	1.1	1.0	1.1	0.2
2009/10	0.8	4.8	3.6	0.0	1.8	1.7	1.9	0.2
2010/11	1.0	4.4	4.4	0.0	1.7	1.7	1.9	0.9
2011/12	1.0	4.2	4.2	0.0	3.1	1.7	1.9	0.2
2012/13	1.1	4.5	4.7	0.0	1.8	2.0	2.3	0.8
2013/14	1.0	4.4	4.4	0.0	1.3	2.3	2.7	1.2
2014/15	0.8	4.5	3.5	0.0	1.1	2.4	2.8	0.8
2015/16	1.0	4.5	4.5	0.0	1.6	2.5	2.9	0.8
Australia								
2007/08	0.9	4.0	3.8	0.0	0.8	2.2	2.2	0.8
2008/09	0.8	3.5	2.7	0.0	1.0	1.8	1.8	0.7
2009/10	0.5	3.0	1.5	0.0	0.3	1.2	1.2	0.7
2010/11	0.6	3.1	1.9	0.0	0.9	1.4	1.4	0.4
2011/12	0.7	3.4	2.2	0.0	1.3	1.1	1.1	0.2
2012/13	0.6	3.4	2.2	0.0	1.2	1.1	1.1	0.2
2013/14	0.5	2.4	1.3	0.0	0.4	0.9	0.9	0.2
2014/15	0.7	3.2	2.1	0.0	1.5	0.6	0.6	0.2
2015/16	0.7	3.0	2.1	0.0	0.9	1.2	1.2	0.2

U.S. Grains Supply and Distribution: Wheat, Corn, Sorghum, Barley, Oats, Rye, and Rice

Thousand Metric Tons/Hectares

	Area Harvested	Yield	Rough Production	Production	Imports	TY Imports	Exports	TY Exports	Feed Dom. Consumption	Domestic Consumption	Ending Stocks
Wheat											
2013/14	18,345	3	nr	58,105	4,710	4,785	32,001	31,518	6,196	34,287	16,065
2014/15	18,771	3	nr	55,147	4,068	3,987	23,249	22,752	3,254	31,530	20,501
2015/16	19,058	3	nr	55,840	3,402	3,350	21,772	22,000	4,899	33,177	24,794
Corn											
2013/14	35,390	10	nr	351,272	909	727	48,783	50,684	128,023	292,965	31,292
2014/15	33,644	11	nr	361,091	804	809	47,359	46,773	135,018	301,851	43,977
2015/16	32,644	11	nr	346,815	762	750	45,722	46,000	134,626	301,131	44,701
Sorghum											
2013/14	2,665	4	nr	9,966	2	3	5,362	5,717	2,351	4,127	864
2014/15	2,590	4	nr	10,988	10	27	8,965	9,249	2,043	2,429	468
2015/16	3,094	5	nr	15,083	18	0	8,255	7,500	3,302	5,842	1,472
Barley											
2013/14	1,230	4	nr	4,719	408	522	311	336	1,440	4,775	1,791
2014/15	1,011	4	nr	3,953	513	430	312	292	938	4,234	1,711
2015/16	1,258	4	nr	4,666	392	450	261	300	1,089	4,421	2,087
Oats											
2013/14	408	2	nr	938	1,674	1,866	23	29	1,694	2,757	359
2014/15	419	2	nr	1,019	1,852	1,759	26	23	1,307	2,424	780
2015/16	516	3	nr	1,300	1,637	1,600	29	30	1,710	2,828	860
Rye											
2013/14	113	2	nr	194	234	204	7	6	184	424	7
2014/15	104	2	nr	183	237	262	6	3	164	406	15
2015/16	146	2	nr	292	216	200	6	5	221	467	50
Rice, Milled											
2013/14	999	9	8,615	6,117	734	755	3,005	2,998	nr	3,977	1,025
2014/15	1,181	8	10,026	7,068	783	770	3,207	3,450	nr	4,117	1,552
2015/16	1,040	8	8,653	6,057	810	820	3,112	3,250	nr	4,043	1,264

Notes: Wheat Trade Year (TY) statistics are on July/June years. Barley, corn, sorghum, rye and oats Trade Year (TY) statistics are on Oct/Sept years. Rice Trade Year (TY) statistics are for the subsequent calendar year; 'Imports' and 'Exports' columns contain data on the local marketing year: wheat, barley, oats and rye are June/May; corn and sorghum are Sept/Aug; rice is Aug/July.

Total Wheat and Coarse Grains: Supply and Demand

Millions of Metric Tons/Hectares

	Area Harvested	Yield	Production	TY Exports	Feed Dom.	Domestic Consumpti	Ending Stocks
Wheat and Coarse Grains							
1986/87	565.2	2.4	1,347.9	174.7	645.6	1,299.4	469.2
1987/88	544.3	2.4	1,285.9	202.2	656.4	1,329.6	423.1
1988/89	541.9	2.2	1,218.1	203.3	619.4	1,302.0	339.3
1989/90	548.2	2.4	1,327.4	208.9	644.4	1,346.2	320.5
1990/91	545.7	2.6	1,417.6	190.1	669.7	1,369.8	368.4
1991/92	543.3	2.5	1,355.7	207.5	653.4	1,366.1	357.9
1992/93	545.9	2.6	1,431.7	205.2	664.1	1,388.4	398.4
1993/94	536.1	2.5	1,356.6	188.2	657.0	1,389.2	365.8
1994/95	534.1	2.6	1,392.8	200.1	670.3	1,395.6	363.0
1995/96	527.2	2.5	1,338.8	187.5	641.6	1,381.8	320.0
1996/97	545.8	2.7	1,490.3	198.3	674.4	1,441.8	368.5
1997/98	535.2	2.8	1,490.8	190.3	685.4	1,443.3	416.0
1998/99	520.2	2.8	1,481.6	198.7	685.1	1,448.6	449.0
1999/00	506.2	2.9	1,465.8	214.0	689.9	1,470.2	444.1
2000/01	509.3	2.8	1,446.9	204.9	700.4	1,472.2	418.8
2001/02	511.7	2.9	1,480.2	208.3	713.6	1,495.9	403.2
2002/03	504.7	2.9	1,445.0	209.2	711.6	1,506.6	341.6
2003/04	511.2	2.9	1,472.7	205.8	717.8	1,535.5	278.8
2004/05	514.8	3.2	1,642.8	214.4	755.9	1,585.9	335.7
2005/06	517.4	3.1	1,599.8	222.5	757.2	1,617.1	318.5
2006/07	519.1	3.1	1,585.2	229.8	749.1	1,630.5	273.1
2007/08	534.6	3.2	1,692.9	244.7	763.6	1,675.9	290.1
2008/09	539.4	3.3	1,791.7	253.6	773.6	1,722.4	359.4
2009/10	533.6	3.4	1,803.8	254.1	781.6	1,767.8	395.4
2010/11	523.3	3.3	1,748.2	250.1	772.9	1,783.6	360.0
2011/12	537.9	3.4	1,852.8	287.1	806.6	1,853.3	359.5
2012/13	532.5	3.4	1,796.1	279.4	807.5	1,814.7	340.9
2013/14	541.7	3.7	1,996.2	327.0	859.9	1,932.5	404.5
2014/15	544.8	3.7	2,022.1	338.7	881.2	1,971.9	454.8
2015/16	546.7	3.7	2,002.5	327.4	898.5	1,982.9	474.5

Notes: Wheat and coarse grains trade data are on July/June years through 1975/76. From 1976/77 to the present, coarse grains data are on an Oct/Sept trade year.

World Wheat and Coarse Grains: Supply and Demand

Millions of Metric Tons/Hectares

	Area Harvested	Yield	Production	TY Exports	Feed Dom.	Domestic Consumpti	Ending Stocks
Wheat							
1993/94	221.1	2.5	558.6	101.7	110.9	552.6	183.1
1994/95	213.4	2.5	523.1	101.5	102.8	541.7	164.5
1995/96	216.7	2.5	537.6	99.2	96.7	545.8	156.3
1996/97	227.1	2.6	581.4	104.0	101.1	572.7	165.0
1997/98	226.4	2.7	610.2	104.5	105.9	576.4	198.8
1998/99	219.2	2.7	590.5	102.0	109.2	578.9	210.4
1999/00	212.7	2.8	587.5	111.9	104.5	587.6	210.3
2000/01	215.6	2.7	583.3	102.1	111.1	587.0	206.6
2001/02	214.5	2.7	583.9	107.9	112.0	586.8	203.7
2002/03	213.9	2.7	569.7	106.5	116.1	604.1	169.3
2003/04	208.0	2.7	555.3	103.5	101.5	588.9	135.7
2004/05	215.8	2.9	626.8	113.2	110.4	606.1	156.4
2005/06	217.5	2.8	618.8	114.1	117.4	621.8	153.4
2006/07	212.4	2.8	596.7	115.3	112.8	616.5	133.6
2007/08	217.1	2.8	612.7	116.0	104.6	617.5	128.8
2008/09	224.1	3.1	683.6	143.2	124.3	643.3	169.1
2009/10	225.6	3.0	687.0	135.3	122.1	652.9	203.2
2010/11	216.8	3.0	649.9	134.1	116.7	654.0	199.1
2011/12	220.8	3.2	696.1	153.8	148.3	697.5	197.7
2012/13	215.8	3.1	658.7	147.2	138.2	679.2	177.2
2013/14	219.9	3.3	715.1	162.4	126.8	698.7	193.6
2014/15	222.4	3.3	725.1	161.3	132.7	707.0	211.7
2015/16	224.8	3.3	733.0	160.9	138.6	717.4	227.3
Coarse Grains							
1993/94	315.0	2.5	798.0	86.5	546.1	836.6	182.7
1994/95	320.8	2.7	869.7	98.6	567.6	853.9	198.5
1995/96	310.5	2.6	801.2	88.3	544.9	836.0	163.7
1996/97	318.6	2.9	908.9	94.3	573.3	869.1	203.5
1997/98	308.8	2.9	880.6	85.8	579.5	866.9	217.1
1998/99	301.0	3.0	891.1	96.7	575.9	869.7	238.6
1999/00	293.6	3.0	878.4	102.1	585.4	882.6	233.8
2000/01	293.7	2.9	863.6	102.8	589.3	885.2	212.3
2001/02	297.2	3.0	896.3	100.4	601.6	909.1	199.5
2002/03	290.9	3.0	875.3	102.7	595.5	902.5	172.2
2003/04	303.2	3.0	917.4	102.3	616.2	946.6	143.1
2004/05	299.0	3.4	1,016.1	101.2	645.5	979.8	179.4
2005/06	299.9	3.3	981.0	108.4	639.8	995.3	165.1
2006/07	306.8	3.2	988.5	114.5	636.3	1,014.1	139.5
2007/08	317.5	3.4	1,080.2	128.7	659.0	1,058.4	161.3
2008/09	315.4	3.5	1,108.0	110.4	649.3	1,079.0	190.3
2009/10	308.0	3.6	1,116.8	118.8	659.5	1,114.9	192.2
2010/11	306.5	3.6	1,098.3	116.0	656.2	1,129.7	160.8
2011/12	317.2	3.6	1,156.8	133.4	658.3	1,155.8	161.8
2012/13	316.7	3.6	1,137.4	132.2	669.3	1,135.5	163.7
2013/14	321.8	4.0	1,281.1	164.6	733.1	1,233.9	210.9
2014/15	322.4	4.0	1,297.0	177.4	748.5	1,264.8	243.1
2015/16	321.9	3.9	1,269.6	166.6	759.9	1,265.5	247.2

Notes: Wheat and coarse grains trade data are on July/June years through 1975/76. From 1976/77 to the present, coarse grains data are on an Oct/Sept trade year.

World Corn and Barley: Supply and Demand

Millions of Metric Tons/Hectares

	Area Harvested	Yield	Production	TY Exports	Feed Dom.	Domestic Consumpti	Ending Stocks
Corn							
1993/94	130.8	3.6	476.0	57.4	342.0	509.3	129.4
1994/95	135.2	4.1	559.4	71.9	371.6	535.5	153.3
1995/96	135.0	3.8	516.5	64.8	365.3	536.6	133.3
1996/97	141.5	4.2	593.0	66.6	387.9	560.0	166.3
1997/98	136.3	4.2	574.4	63.1	400.6	573.5	167.2
1998/99	139.0	4.4	606.1	68.7	404.4	582.0	191.4
1999/00	138.9	4.4	608.4	72.0	422.6	605.3	194.4
2000/01	137.1	4.3	591.8	75.9	427.4	610.9	175.3
2001/02	137.1	4.4	601.8	72.7	436.4	625.6	151.5
2002/03	137.8	4.4	603.9	76.8	433.4	628.6	126.8
2003/04	141.6	4.4	627.5	79.0	445.8	649.7	104.6
2004/05	145.3	4.9	716.9	76.0	476.0	690.4	131.1
2005/06	145.4	4.8	700.7	82.5	478.9	708.3	123.5
2006/07	150.5	4.8	716.7	91.3	480.0	731.3	109.0
2007/08	160.2	5.0	795.5	98.2	500.7	776.5	127.9
2008/09	158.7	5.0	799.8	83.6	481.4	784.4	143.3
2009/10	158.3	5.2	824.8	92.7	492.3	827.8	140.3
2010/11	164.5	5.1	835.5	91.7	502.9	852.8	123.1
2011/12	172.2	5.2	889.8	103.7	507.8	885.1	127.8
2012/13	177.6	4.9	870.3	100.5	518.7	865.2	132.9
2013/14	181.2	5.5	991.4	130.2	570.3	949.5	174.9
2014/15	178.6	5.6	1,008.8	132.3	582.8	975.5	208.2
2015/16	177.5	5.5	974.9	128.0	596.2	971.2	211.9
Barley							
1993/94	73.2	2.3	169.0	18.8	123.8	169.1	34.9
1994/95	72.2	2.2	160.7	15.3	120.9	165.6	30.0
1995/96	66.4	2.1	141.2	13.4	107.8	150.7	20.5
1996/97	64.3	2.4	153.2	17.9	106.3	149.5	24.1
1997/98	63.8	2.4	153.9	12.8	104.1	145.8	32.2
1998/99	56.7	2.4	136.0	17.8	99.5	139.3	29.0
1999/00	52.1	2.4	127.4	17.8	94.0	132.5	23.9
2000/01	52.9	2.5	133.0	16.3	94.6	134.3	22.6
2001/02	55.7	2.6	143.4	17.2	95.5	136.8	29.2
2002/03	54.7	2.5	134.2	16.3	94.7	135.8	27.6
2003/04	58.4	2.4	142.7	14.8	103.1	146.8	23.5
2004/05	57.4	2.7	152.1	17.0	100.0	142.5	33.1
2005/06	55.2	2.5	136.1	17.4	97.3	140.9	28.3
2006/07	56.4	2.4	136.9	14.6	98.4	143.7	21.5
2007/08	55.8	2.4	133.0	18.5	91.1	133.9	20.6
2008/09	55.1	2.8	155.1	18.2	100.4	144.0	31.6
2009/10	54.3	2.8	151.1	17.3	101.4	145.3	37.4
2010/11	47.2	2.6	123.2	15.2	91.3	136.3	24.3
2011/12	49.3	2.7	133.6	21.4	91.7	135.2	22.7
2012/13	50.0	2.6	129.2	22.1	88.7	131.4	20.5
2013/14	50.6	2.9	144.5	23.9	97.1	141.1	23.9
2014/15	49.7	2.8	141.2	29.8	96.1	141.2	23.8
2015/16	50.0	2.9	144.8	25.5	96.2	144.9	23.7

Notes: Coarse grains trade data are on July/June years through 1975/76. From 1976/77 to the present, coarse grains data are on an Oct/Sept trade year.

World Rice: Supply and Demand

Millions of Metric Tons/Hectares

	Area Harvested	Yield	Rough Production	Production	TY Exports	Domestic Consumption	Ending Stocks
Rice, Milled							
1986/87	144.8	3.2	464.6	316.1	12.9	310.4	103.3
1987/88	141.4	3.3	464.8	315.1	11.4	313.1	105.3
1988/89	146.6	3.3	490.8	332.1	14.0	325.7	111.7
1989/90	147.8	3.5	510.3	345.2	11.7	336.3	120.6
1990/91	147.0	3.5	519.4	351.4	12.3	345.3	126.7
1991/92	147.5	3.5	522.8	353.2	14.4	353.2	126.7
1992/93	146.5	3.6	524.2	354.0	14.9	357.5	123.2
1993/94	145.3	3.6	526.1	354.7	16.6	358.9	119.0
1994/95	147.3	3.7	540.0	364.1	20.8	365.5	117.6
1995/96	148.4	3.7	547.3	368.8	19.7	368.3	118.1
1996/97	150.1	3.8	565.3	381.4	18.9	379.2	120.3
1997/98	151.7	3.8	575.2	387.4	27.6	380.0	127.7
1998/99	153.1	3.8	587.0	394.9	24.8	388.7	134.0
1999/00	155.9	3.9	608.8	409.3	22.8	400.3	143.1
2000/01	152.4	3.9	594.1	399.3	24.3	395.6	146.7
2001/02	151.3	3.9	594.3	399.5	27.9	413.3	132.9
2002/03	146.9	3.8	563.1	378.2	27.6	408.1	103.0
2003/04	149.3	3.9	585.4	392.5	27.3	413.8	81.7
2004/05	151.8	3.9	596.4	400.8	28.9	408.5	74.0
2005/06	153.9	4.0	622.2	417.8	29.0	415.4	76.5
2006/07	154.5	4.0	625.0	420.1	31.8	421.2	75.4
2007/08	154.9	4.2	643.7	433.7	29.5	428.1	81.0
2008/09	158.1	4.2	668.6	449.3	29.4	437.7	92.6
2009/10	155.6	4.2	656.1	440.6	31.8	438.4	94.9
2010/11	158.4	4.2	672.4	450.6	36.5	445.3	100.1
2011/12	160.5	4.3	697.2	467.7	39.9	461.0	106.8
2012/13	158.6	4.4	704.9	472.8	39.5	468.9	110.7
2013/14	161.7	4.4	713.4	478.4	43.3	481.6	107.6
2014/15	160.0	4.5	713.1	478.3	42.5	482.1	103.7
2015/16	159.2	4.4	705.9	473.5	41.9	486.2	91.0

Notes: Stocks, exports and consumption are expressed on a milled basis in marketing years.

ENDNOTES TO GRAIN: WORLD MARKETS AND TRADE

REGIONAL TABLES

North America: Canada, Mexico, the United States.

Central America: Belize, Costa Rica, El Salvador, Guatemala, Honduras, Nicaragua, Panama.

Caribbean: Anguilla, Antigua and Barbuda, Aruba, Bahamas, Barbados, Bermuda, British Virgin Islands, Cayman Islands, Cuba, Dominica, Dominican Republic, French West Indies, Grenada, Guadeloupe, Haiti, Jamaica and Dep, Leeward-Windward Islands, Martinique, Montserrat, Netherlands Antilles, Puerto Rico, Kitts and Nevis, St. Lucia, St. Vincent and the Grenadines, Trinidad and Tobago, Turks and Caicos Islands, Virgin Islands of the U.S.

South America: Argentina, Bolivia, Brazil, Chile, Colombia, Ecuador, Falkland Islands (Islas Malvinas), French Guiana, Guyana, Paraguay, Peru, Suriname, Uruguay, Venezuela.

EU: Austria, Belgium/Luxembourg, Bulgaria, Croatia, Cyprus, Czech Republic, Denmark, Estonia, Finland, France, Germany, Greece, Hungary, Ireland, Italy, Latvia, Lithuania, Malta, Netherlands, Poland, Portugal, Romania, Slovakia, Slovenia, Spain, Sweden, United Kingdom.

Other Europe: Albania, Azores, Bosnia and Herzegovina, Former Yugoslavia, Gibraltar, Iceland, Macedonia, Montenegro, Norway, Serbia, Switzerland.

Former Soviet Union: Armenia, Azerbaijan, Belarus, Georgia, Kazakhstan, Kyrgyzstan, Moldova, Russia, Tajikistan, Turkmenistan, Ukraine, Uzbekistan.

Middle East: Bahrain, Iran, Iraq, Israel, Jordan, Kuwait, Lebanon, Oman, Qatar, Saudi Arabia, Syria, Turkey, United Arab Emirates, Yemen.

North Africa: Algeria, Egypt, Libya, Morocco, Tunisia.

Sub-Saharan Africa: all African countries except North Africa.

East Asia: China, Hong Kong, Japan, South Korea, North Korea, Macau, Mongolia, Taiwan.

South Asia: Afghanistan, Bangladesh, Bhutan, India, Nepal, Pakistan, Sri Lanka, Maldives.

Southeast Asia: Brunei, Burma, Cambodia, Indonesia, Laos, Malaysia, Philippines, Singapore, Thailand, Vietnam.

Oceania: Australia, Fiji, New Zealand, Papua New Guinea.

OTHER NOTES

Local Marketing Years (LMY): LMY refers to the 12-month period at the onset of the main harvest, when the crop is marketed (i.e., consumed, traded, or stored). The year first listed begins a country's LMY for that commodity (2015/16 starts in 2015); except for summer grains in certain Southern Hemisphere countries and for rice in selected countries, where the second year begins the LMY (2015/16 starts in 2016). Key exporter LMY's are:

Wheat	Corn	Barley	Sorghum
Argentina (Dec/Nov)	Argentina (Mar/Feb)	Australia (Nov/Oct)	Argentina (Mar/Feb)
Australia (Oct/Sep)	Brazil (Mar/Feb)	Canada (Aug/Jul)	Australia (Mar/Feb)
Canada (Aug/Jul)	China (Oct/Sep)	European Union (Jul/Jun)	United States (Sep/Aug)
China (Jul/Jun)	South Africa (May/Apr)	Russia (Jul/Jun)	
European Union (Jul/Jun)	United States (Sep/Aug)	Ukraine (Jul/Jun)	
India (Apr/Mar)		United States (Jun/May)	
Kazakhstan (Jul/Jun)			
Russia (Jul/Jun)			
Turkey (Jun/May)			
Ukraine (Jul/Jun)			
United States (Jun/May)			

For a complete list of local marketing years, please see the FAS website (<http://www.fas.usda.gov/psdonline/psdAvailability.aspx>).

Stocks: Unless otherwise stated, stock data are based on an aggregate of differing local marketing years and should not be construed as representing world stock levels at a fixed point in time.

Consumption: World totals for consumption reflect total utilization, including food, seed, industrial, feed, and waste; as well as differences in local marketing year imports and local marketing year exports. Consumption statistics for regions and individual countries, however, reflect food, seed, industrial, feed, and waste only.

Trade: All PSD tables are balanced on the different local marketing years. All trade tables contain Trade Year (TY) data which puts all countries on a uniform, 12-month period for analytical comparisons: wheat is July/June; coarse grains, corn, barley, sorghum, oats, and rye are Oct/Sept; and rice is calendar year.

EU Consolidation: The trade figures starting from 1999/00 represent the European Union (Croatia plus the former EU-27) and exclude all intra-trade. For the years 1960/61 through 1998/99, figures are the EU-15 and also exclude all intra-trade. EU-15 member states' data for grains are no longer maintained in the official USDA database. Data for the individual NMS-10, plus Bulgaria, Romania, and Croatia, exists only prior to 1999/00.

Statistics: (1) Wheat trade statistics include wheat, flour, and selected pasta products on a grain equivalent basis. (2) Rice trade statistics include rough, brown, milled, and broken on a milled equivalent basis. (3) Coarse grains statistics include corn, barley, sorghum, oats, rye, millet, and mixed grains but exclude trade in barley malt, millet, and mixed grains.

Unaccounted: This term includes grain in transit, reporting discrepancies in some countries, and trade to countries outside the USDA database.

The Global Commodity Analysis Division, Office of Global Analysis, Foreign Agricultural Service, USDA, Washington, DC 20250, prepared this circular. Information is gathered from official statistics of foreign governments and other foreign source materials, reports of U.S. agricultural attachés and Foreign Service officers, office research, and related information. Further information may be obtained by writing the Division or telephoning (202) 720-3448.

Note: The previous report in this series was Grain: World Markets and Trade October 2015. For further details on world grain production, please see World Agricultural Production November 2015.

This circular is available in its entirety on the Internet via the Foreign Agricultural Service Home Page. The address is: <http://www.fas.usda.gov>

Questions may be directed to the following staff:

Teresa McKeivier	(202) 690-1151	Teresa.McKeivier@fas.usda.gov	Wheat
Andrew Sowell	(202) 720-0262	Andrew.Sowell@fas.usda.gov	Wheat
Yoonhee Macke	(202) 690-4199	Yoonhee.Macke@fas.usda.gov	Rice
Kyle Bonsu	(202) 260-8370	Kyle.Bonsu@fas.usda.gov	Rice
Rick O'Meara	(202) 720-4933	Richard.Omeara@fas.usda.gov	Coarse Grains
Barrett Bumpas	(202) 692-0337	Barrett.Bumpas@fas.usda.gov	Coarse Grains