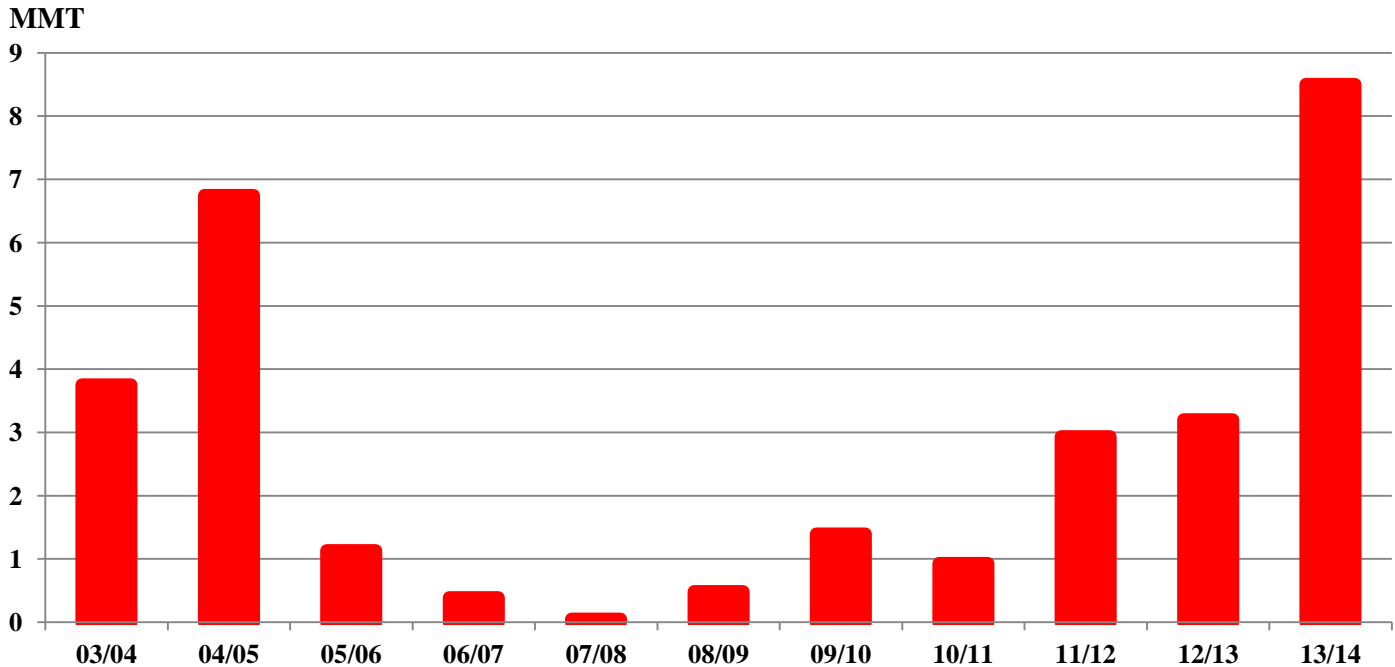




Grain: World Markets and Trade

China's Wheat Imports Skyrocket



China is now forecast to import 8.5 million tons of wheat in 2013/14, the highest in 18 years. The sharp increase comes on the heels of reports that disease and adverse weather affected quality significantly in both 2012/13 and 2013/14. As a result, government reserves of milling-quality wheat have fallen. Government reserve programs are designed to provide stability in the market by buying, selling, and storing wheat.

China's wheat import Tariff-Rate-Quota (TRQ) is 9.6 million tons, of which the private sector has access to only 960,000 tons, while the government controls the rest. China has already purchased nearly 3.0 million tons of U.S. wheat, most of which is Soft Red Winter, along with reported purchases of Canadian, French, and Australian wheat. The imported wheat will likely be used for blending with lower quality domestic wheat for milling, for feed in the southeast provinces, and for rebuilding government reserves.

China also imported large quantities in 2003/04 and 2004/05. At that time, exporter supplies were more abundant. This year, however, exporter stocks are projected to be significantly tighter. Soft Red Winter wheat export prices are already rising, in part, because of China's recent purchases and expectations of future sales.

TABLE OF CONTENTS

World Markets and Trade: Commentary and Current Data	
Wheat	4
Rice	10
Coarse Grains.....	15
Historical Data Series for Selected Regions and Countries.....	35
Endnotes to Grain: World Markets and Trade.....	54

Note: Starting with this month’s publication, Production, Supply and Distribution (PSD) numbers for “European Union” reflect the addition of Croatia to the former EU-27. Croatia data no longer exists in the PSD after 1998/99; therefore, June data in this month’s Circular, including World Totals, will differ from that published in June 2013.

The Foreign Agricultural Service (FAS) updates its production, supply and distribution database for cotton, oilseeds, and grains at 12:00 p.m. on the day the World Agricultural Supply and Demand Estimates (WASDE) report is released. It is available on the FAS website (<http://www.fas.usda.gov/psdonline/>). This circular is released at 12:30 p.m. on the same day, together with its downloadable data set.

All Grain Summary Comparison

	Marketing Year	Wheat			Rice, Milled			Corn		
		2011/12	2012/13	2013/14	2011/12	2012/13	2013/14	2011/12	2012/13	2013/14
Production										
United States	(Jun-May)	54.4	61.8	57.5	5.9	6.3	5.7	313.9	273.8	354.3
Other		642.8	593.5	640.3	459.9	463.5	473.0	569.3	581.2	605.5
World Total		697.2	655.3	697.8	465.8	469.8	478.7	883.3	855.0	959.8
Domestic Consumption										
United States	(Jun-May)	32.2	38.3	35.7	3.5	3.8	3.6	279.0	266.7	292.1
Other		655.7	648.5	661.1	452.6	462.9	470.4	583.1	604.0	635.5
World Total		687.9	686.8	696.8	456.1	466.7	474.0	862.1	870.7	927.6
Ending Stocks										
United States	(Jun-May)	20.2	19.6	15.7	1.3	1.0	0.9	25.1	18.5	49.8
Other		179.3	154.9	156.7	103.5	104.3	107.1	107.3	105.0	101.2
World Total		199.5	174.5	172.4	104.8	105.4	108.0	132.4	123.6	151.0
TY Imports										
United States	(Jun-May)	3.0	3.5	3.5	0.6	0.7	0.7	0.8	4.0	0.8
Other		147.8	140.1	142.3	36.4	34.7	35.4	100.2	92.5	98.2
World Total		150.8	143.6	145.8	37.0	35.4	36.2	100.9	96.5	98.9
TY Exports										
United States	(Jun-May)	28.1	27.4	29.5	3.3	3.4	3.1	38.4	17.5	33.0
Other		125.7	118.9	118.7	35.8	34.2	34.9	65.3	80.2	69.4
World Total		153.8	146.3	148.2	39.1	37.6	38.0	103.8	97.7	102.4

Note: Consumption in this table has not been adjusted for differences in marketing year imports and exports and therefore differs from global totals shown elsewhere.

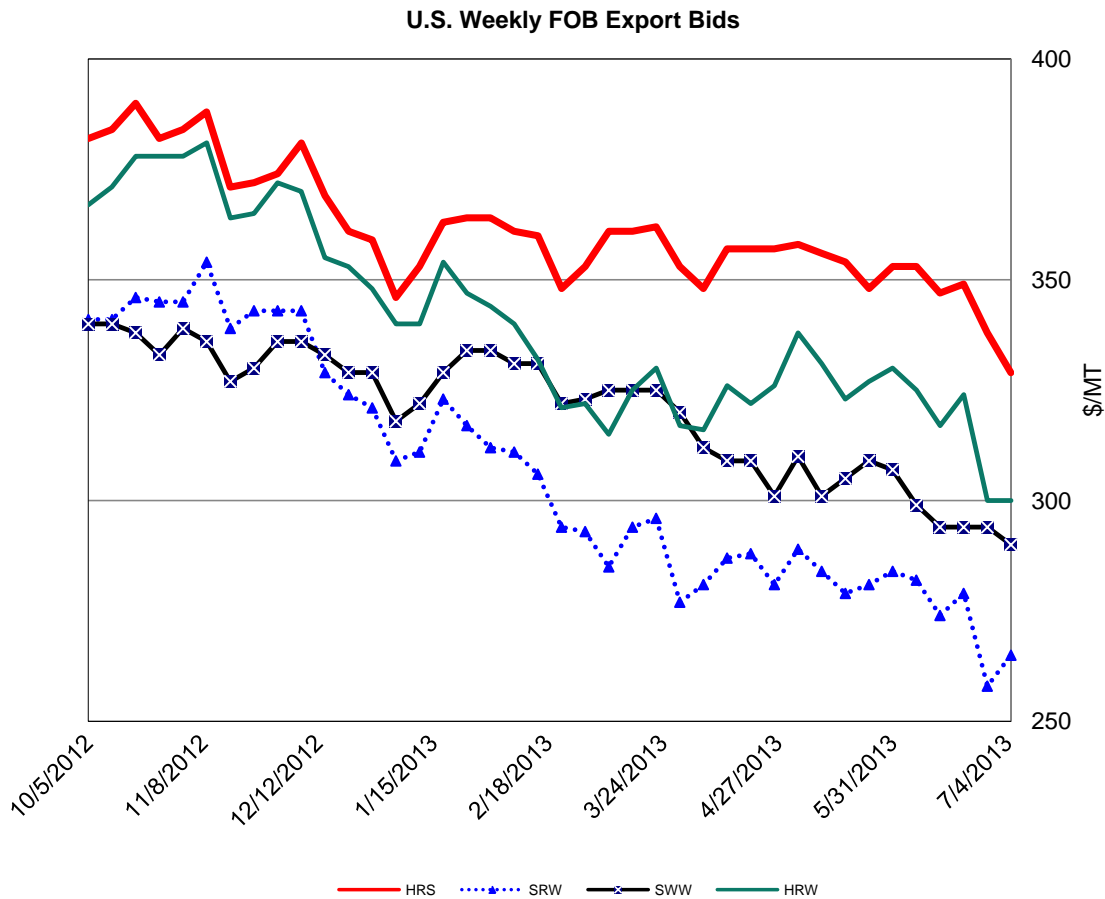
Marketing years for U.S. grains are: Wheat (Jun-May), Rice (Aug-Jul), Corn (Sep-Aug).
'Marketing Year' column is germane for U.S. wheat only.

WHEAT: WORLD MARKETS AND TRADE

OVERVIEW

Global production for 2013/14 is up modestly and trade is significantly higher, driven mostly by a boost in China's imports. U.S. exports are boosted sharply this month, supported by China's large purchases of Soft Red Winter (SRW) wheat and expanding opportunities in South America. The season-average U.S. farm price is up from last month because of projected strong demand. For 2012/13, trade and U.S. exports were raised slightly.

PRICES:



Domestic: Over the past month, prices dropped as winter wheat harvesting continued to pressure markets. Hard Red Winter (HRW) fell \$25/ton to \$300 and SRW dropped to a low of \$258/ton before rising to \$265/ton based on recent large sales to China. Soft White Wheat (SWW) fell \$9 to \$290/ton and Hard Red Spring (HRS) shed \$24/ton to \$329/ton.

TRADE CHANGES IN 2013/14

Selected Exporters

- **Argentina** is cut 500,000 tons to 6.0 million because the government restricted exports on tighter 2012/13 supplies.
- **Australia** is boosted 2.0 million tons to 19.0 million on larger exportable supplies and strong demand from China.
- **Canada** is up 500,000 tons to 19.5 million as a result of increased sales opportunities in South America with tighter supplies in Argentina.
- **EU** is raised 1.5 million tons to 20.0 million on account of stronger demand in Pakistan and Iran.
- **India** is cut 1.0 million tons to 7.0 million as it has become less competitive with other exporters.
- **Kazakhstan** is cut 500,000 tons to 7.0 million on lower exportable supplies.
- **United States** is boosted 3.0 million tons to 29.5 million supported by China's large purchases of Soft Red Winter wheat.

Selected Importers

- **China** is boosted 5.0 million tons to 8.5 million evidenced by large purchases of U.S., EU, and Australian wheat.
- **EU** is cut 500,000 tons to 5.5 million as a result of larger production and Croatia's inclusion into the EU.
- **Iran** is raised 500,000 tons to 2.5 million in view of recent purchases.

TRADE CHANGES IN 2012/13

Selected Exporters - based on trade data

- **Australia** is raised 800,000 tons to 21.3 million.
- **Kazakhstan** is raised 300,000 tons to 6.8 million.

Selected Importers - based on trade data

- **Japan** is raised 300,000 tons to 6.6 million.
- **Morocco** is up 300,000 tons to 3.6 million.
- **Russia** is up 400,000 tons to 1.4 million.

World Wheat, Flour, and Products Trade
July/June Year, Thousand Metric Tons

	2009/10	2010/11	2011/12	2012/13	2013/14 Jun	2013/14 Jul
TY Exports						
Argentina	5,255	7,742	11,951	7,500	6,500	6,000
Australia	13,764	18,455	23,031	21,300	17,000	19,000
Canada	18,992	16,768	17,603	18,800	19,000	19,500
European Union	22,279	23,086	16,691	22,000	18,500	20,000
India	60	73	1,722	8,000	8,000	7,000
Kazakhstan	7,871	5,519	11,069	6,800	7,500	7,000
Russia	18,556	3,983	21,627	11,200	17,000	17,000
Turkey	4,363	2,944	3,678	3,300	3,200	3,200
Ukraine	9,337	4,302	5,436	7,200	8,000	8,000
Uruguay	1,039	1,531	1,782	1,200	1,200	1,200
Others	9,683	13,638	11,102	11,630	10,730	10,770
Subtotal	111,199	98,041	125,692	118,930	116,630	118,670
United States	24,172	35,977	28,071	27,400	26,500	29,500
World Total	135,371	134,018	153,763	146,330	143,130	148,170
TY Imports						
Afghanistan	2,500	2,000	2,200	1,900	2,000	2,000
Algeria	5,167	6,516	6,350	6,200	6,000	6,000
Bangladesh	3,353	3,951	2,016	2,600	3,000	3,000
Brazil	6,691	6,742	7,053	7,500	7,500	7,500
China	1,394	927	2,933	3,200	3,500	8,500
Egypt	10,500	10,600	11,650	8,500	9,000	9,000
European Union	5,357	4,622	7,368	5,700	6,000	5,500
Indonesia	5,364	6,606	6,457	6,900	7,000	7,100
Iran	3,650	350	2,700	5,200	2,000	2,500
Iraq	3,899	3,631	3,785	3,900	3,200	3,200
Japan	5,502	5,869	6,354	6,600	6,000	6,000
Korea, South	4,470	4,761	5,188	5,500	4,800	4,800
Libya	2,090	1,475	1,561	1,700	1,750	1,750
Mexico	3,196	3,404	5,020	3,900	3,900	3,900
Morocco	2,304	4,019	3,205	3,600	2,000	2,000
Nigeria	4,020	4,084	3,874	4,000	4,000	4,000
Philippines	3,196	3,192	4,061	3,400	3,800	3,800
Saudi Arabia	1,909	1,742	2,904	2,000	3,000	3,000
South Africa	1,358	1,627	1,542	1,700	1,900	1,900
Sudan	1,901	1,604	2,361	1,900	1,900	1,900
Thailand	1,614	1,943	2,646	1,800	2,100	2,100
Tunisia	1,531	1,818	1,473	1,600	1,850	1,850
Turkey	3,218	3,546	4,414	3,500	3,000	3,000
Vietnam	1,927	2,460	2,711	1,900	2,200	2,200
Yemen	2,602	2,945	2,637	2,900	3,100	3,100
Others	40,650	38,137	45,365	42,500	42,520	42,670
Subtotal	129,363	128,571	147,828	140,100	137,020	142,270
Unaccounted	2,822	2,876	2,935	2,730	2,610	2,400
United States	3,186	2,571	3,000	3,500	3,500	3,500
World Total	135,371	134,018	153,763	146,330	143,130	148,170

TY=Trade Year, see Endnotes.

World Wheat Production, Consumption, and Stocks
Local Marketing Years, Thousand Metric Tons

	2009/10	2010/11	2011/12	2012/13	2013/14 Jun	2013/14 Jul
Production						
Argentina	12,000	17,200	15,500	10,000	13,000	13,000
Australia	21,834	27,410	29,923	22,079	24,500	25,500
Canada	26,950	23,300	25,288	27,200	29,000	29,000
China	115,120	115,180	117,400	121,000	121,000	121,000
Egypt	8,523	7,200	8,400	8,500	8,800	8,800
European Union	139,720	136,667	138,081	133,120	137,443	138,604
India	80,680	80,800	86,870	94,880	92,000	92,000
Iran	13,485	15,030	13,500	14,000	15,500	15,500
Kazakhstan	17,051	9,638	22,732	9,841	15,000	14,500
Morocco	6,400	4,887	5,800	3,870	6,800	6,800
Pakistan	24,000	23,900	25,000	23,300	24,000	24,000
Russia	61,770	41,508	56,240	37,720	54,000	54,000
Turkey	18,450	17,000	18,800	15,500	17,600	17,600
Ukraine	20,866	16,844	22,324	15,761	19,500	19,500
Uzbekistan	6,200	6,500	6,300	6,700	6,700	6,700
Others	53,328	49,159	50,602	50,024	53,600	53,770
Subtotal	626,377	592,223	642,760	593,495	638,443	640,274
United States	60,366	60,062	54,413	61,755	56,613	57,524
World Total	686,743	652,285	697,173	655,250	695,056	697,798
Total Consumption						
Algeria	8,550	8,750	8,950	9,250	9,450	9,450
Brazil	11,000	10,800	11,200	10,900	11,200	11,200
Canada	7,213	7,552	9,852	9,900	9,700	9,700
China	107,000	110,500	122,500	125,000	120,500	125,500
Egypt	18,100	17,700	18,600	18,700	18,700	18,700
European Union	125,622	122,844	126,875	121,000	122,750	122,000
India	78,150	81,760	81,406	83,840	88,010	89,010
Iran	16,800	16,200	15,500	16,400	16,600	16,800
Kazakhstan	7,600	6,200	7,400	6,800	7,200	7,200
Morocco	7,800	7,850	8,500	8,300	8,400	8,500
Pakistan	23,000	23,000	23,100	23,900	23,500	24,000
Russia	39,600	38,600	38,000	33,550	36,500	36,500
Turkey	17,100	17,300	18,100	17,500	17,600	17,600
Ukraine	12,300	11,600	14,950	11,800	11,500	11,500
Uzbekistan	7,500	7,700	8,000	7,975	7,950	7,950
Others	132,156	134,587	142,743	143,732	145,080	145,535
Subtotal	622,738	624,054	664,719	641,979	657,697	664,214
United States	30,978	30,710	32,202	38,284	35,979	35,679
World Total	653,716	654,764	696,921	680,263	693,676	699,893
Ending Stocks						
Canada	7,743	7,360	5,932	4,907	5,697	5,197
China	54,425	59,091	55,946	54,146	61,746	57,146
Egypt	5,605	5,480	6,698	4,798	3,698	3,698
European Union	16,575	11,934	13,817	9,637	11,515	11,741
India	16,120	15,360	19,950	24,200	20,200	20,200
Iran	4,200	2,766	1,474	5,104	6,074	6,104
Russia	14,722	13,736	10,899	5,269	6,419	6,269
Others	55,771	60,041	64,559	46,862	47,836	46,347
Subtotal	175,161	175,768	179,275	154,923	163,185	156,702
United States	26,552	23,466	20,211	19,550	17,931	15,676
World Total	201,713	199,234	199,486	174,473	181,116	172,378

Regional Wheat Imports, Production, Consumption, and Stocks

Thousand Metric Tons

	2009/10	2010/11	2011/12	2012/13	Jun 2013/14	Jul 2013/14
TY Imports						
North America	6,785	6,404	8,516	7,875	7,890	7,890
Central America	1,445	1,684	1,666	1,615	1,635	1,635
South America	13,171	13,158	13,778	14,440	14,440	14,440
European Union	5,357	4,622	7,368	5,700	6,000	5,500
Other Europe	1,669	1,614	1,914	1,735	1,820	1,820
Former Soviet Union - 12	5,432	5,503	8,021	7,215	6,755	6,705
Middle East	22,557	17,637	23,337	23,555	20,515	21,015
North Africa	21,592	24,428	24,239	21,600	20,600	20,600
Sub-Saharan Africa	16,398	15,460	18,442	17,490	17,675	17,675
East Asia	13,754	13,903	16,877	17,660	16,675	21,675
South Asia	7,608	7,619	5,573	5,695	6,330	6,530
Southeast Asia	13,924	16,286	18,007	16,015	17,185	17,285
Others	2,857	2,824	3,090	3,005	3,000	3,000
Total	132,549	131,142	150,828	143,600	140,520	145,770
Production						
North America	91,464	87,038	83,329	92,185	89,113	90,024
South America	22,213	27,560	25,867	18,821	22,991	22,991
European Union	139,720	136,667	138,081	133,120	137,443	138,604
Other Europe	3,734	3,178	3,634	3,489	3,991	3,991
Former Soviet Union - 12	114,012	81,068	115,032	77,212	102,590	102,260
Middle East	38,940	40,223	40,266	36,618	41,785	41,785
North Africa	20,241	15,914	18,311	17,232	20,412	20,412
Sub-Saharan Africa	6,414	5,300	6,255	6,132	6,283	6,283
East Asia	116,449	116,350	118,774	122,444	122,361	122,361
South Asia	111,144	110,949	117,132	125,246	122,996	122,996
Oceania	22,238	27,855	30,306	22,565	24,900	25,900
Others	174	183	186	186	191	191
Total	686,743	652,285	697,173	655,250	695,056	697,798
Domestic Consumption						
North America	44,491	44,712	49,654	54,884	52,179	51,879
South America	25,738	25,648	26,161	26,145	26,500	26,510
European Union	125,622	122,844	126,875	121,000	122,750	122,000
Other Europe	4,884	4,733	4,933	4,730	5,001	5,001
Former Soviet Union - 12	78,157	74,981	79,775	71,705	74,810	74,910
Middle East	54,641	55,136	56,734	55,805	57,415	57,765
North Africa	39,441	38,806	40,572	40,887	41,262	41,362
Sub-Saharan Africa	21,031	20,662	22,569	22,981	23,436	23,426
East Asia	120,187	123,954	136,895	140,317	134,535	139,735
South Asia	113,755	117,008	115,841	120,426	124,301	125,801
Southeast Asia	13,086	14,980	16,719	16,425	16,795	16,795
Oceania	6,141	6,835	7,807	8,191	8,185	8,185
Others	3,295	3,354	3,343	3,335	3,450	3,455
Total	650,469	653,653	687,878	686,831	690,619	696,824
Ending Stocks						
North America	34,803	31,143	26,718	24,762	24,033	21,278
South America	7,735	8,477	4,324	4,050	4,062	4,456
European Union	16,575	11,934	13,817	9,637	11,515	11,741
Other Europe	1,668	1,153	1,275	1,094	1,089	1,084
Former Soviet Union - 12	25,964	23,665	27,128	14,145	15,695	15,505
Middle East	13,958	12,651	12,057	13,315	14,430	14,310
North Africa	11,038	12,207	13,739	11,059	10,084	10,134
Sub-Saharan Africa	2,159	1,685	2,752	2,618	2,245	2,245
East Asia	57,307	62,168	59,433	57,700	65,096	60,496
South Asia	21,536	21,238	25,768	28,478	24,953	24,153
Southeast Asia	3,211	3,933	4,582	3,457	3,232	3,272
Oceania	5,343	8,598	7,458	3,727	4,270	3,277
Others	416	382	435	431	412	427
Total	201,713	199,234	199,486	174,473	181,116	172,378

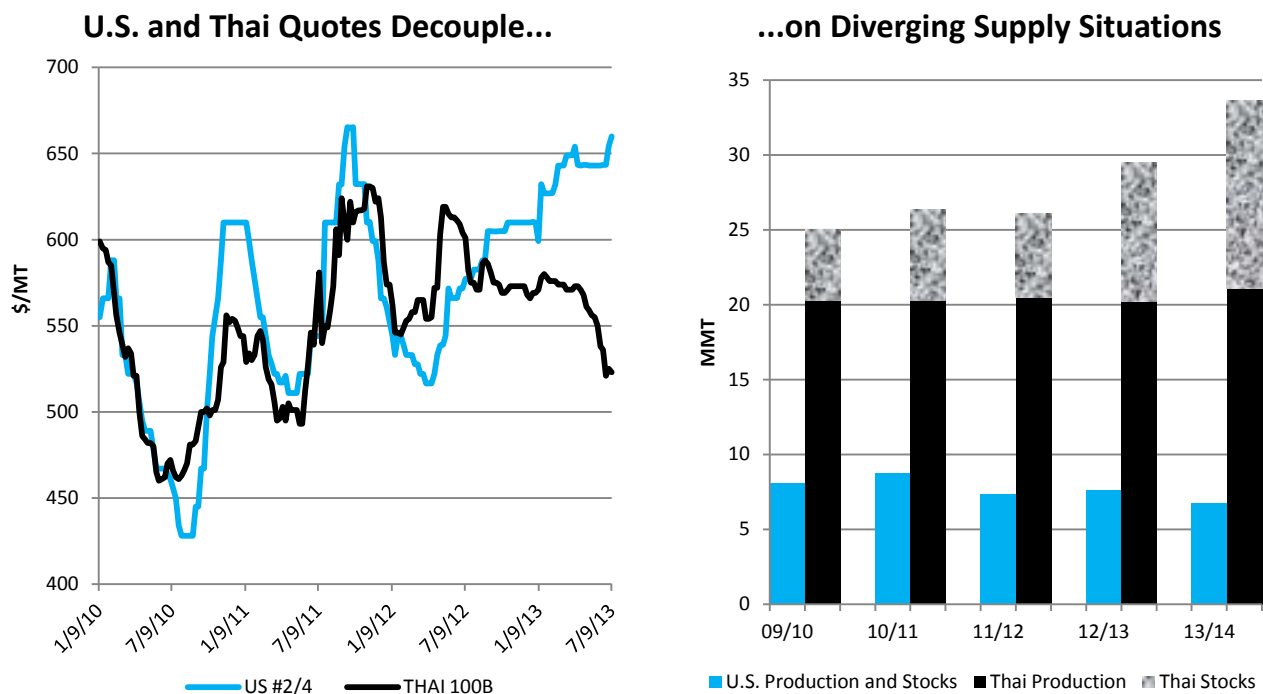
NOTES: Regional definitions appear on last page of this circular. Imports are reported on a trade year basis. All other data are reported using local marketing years.

RICE: WORLD MARKETS AND TRADE

OVERVIEW

Global production in 2013/14 is still a record but is down from the previous month, largely due to revisions to U.S. production - the smallest planted area since 1987. Trade is down slightly, on account of lower Pakistani and U.S. exports. Global production for 2012/13 is down, with smaller crops in Pakistan and Vietnam. Trade is reduced on lower demand from traditional importers.

FEATURE



In contrast to historical price movements in tandem, the U.S. and Thai export quotes have recently moved in opposite directions. While the United States nears the end of the marketing year of a smaller-than-normal crop, Thailand seeks to sell its plentiful supplies. The Thai government supports domestic procurement prices through the Paddy Pledging Program, but recently attempted to lower the prices. However, pressure from farmers reversed the decision, and prices for the next season have not been finalized. Additionally, the government announced that it will sell some of its massive stocks. Meanwhile, the U.S. crop will be harvested in the coming months, but it is even smaller than the previous year. Estimates for total U.S. supplies for 2013/14 are the tightest in over a decade, and the projected season-average farm price is up from last month.

Grain: World Markets and Trade, July 2013

TRADE CHANGES

Selected Exporters

- **Thailand** is slashed 500,000 tons to 7.0 million in 2013 on the slow pace of exports as the high support prices have kept export prices uncompetitive.
- **Pakistan** is reduced 200,000 tons to 3.0 million for 2013 on a lower crop due to flooding; it is also reduced 200,000 tons to 3.0 million for 2014 as a lack of reliable power supplies continues to hamper the entire export chain.
- **China** is raised 150,000 tons to 450,000 in 2013 and to 350,000 in 2014 as exports to East Asia have been stronger than expected.
- **United States** is lowered 100,000 tons to 3.1 million in 2014 on tighter supplies.

Selected Importers

- **Indonesia** is lowered 500,000 tons to 1.0 million in 2013 on slow shipments to date.
- **Nigeria** is cut 100,000 tons to 2.3 million in 2013 as high tariffs continue to impede imports.

World Rice Trade
January/December Year, Thousand Metric Tons

	2009/10	2010/11	2011/12	2012/13	2013/14 Jun	2013/14 Jul
TY Exports						
Argentina	468	732	608	625	625	625
Australia	54	311	449	500	520	520
Brazil	430	1,296	1,105	850	850	850
Burma	445	778	690	750	750	750
Cambodia	750	860	800	975	1,000	1,000
China	619	487	267	450	200	350
Egypt	570	320	600	850	850	850
European Union	282	241	197	200	200	200
Guyana	298	257	285	300	325	345
India	2,228	4,637	10,250	9,000	8,500	8,500
Pakistan	4,000	3,414	3,399	3,000	3,200	3,000
Paraguay	135	208	262	250	250	250
Thailand	9,047	10,647	6,945	7,000	8,000	8,000
Uruguay	808	841	1,056	900	900	900
Vietnam	6,734	7,000	7,717	7,400	7,700	7,700
Others	833	970	1,192	1,127	1,067	1,017
Subtotal	27,701	32,999	35,822	34,177	34,937	34,857
United States	3,868	3,247	3,326	3,400	3,200	3,100
World Total	31,569	36,246	39,148	37,577	38,137	37,957
TY Imports						
Angola	280	275	353	500	525	525
Bangladesh	660	1,486	53	300	430	430
Brazil	778	591	732	750	700	700
Cameroon	300	310	450	450	475	475
China	366	575	2,900	3,000	3,000	3,000
Cote d'Ivoire	840	935	1,450	1,150	1,100	1,100
Cuba	498	558	330	525	450	450
European Union	1,216	1,475	1,306	1,200	1,200	1,200
Ghana	320	620	576	550	575	575
Hong Kong	390	381	415	425	420	420
Indonesia	1,150	3,098	1,960	1,000	1,500	1,500
Iran	1,520	1,870	1,550	1,500	1,450	1,450
Iraq	1,188	1,036	1,478	1,400	1,400	1,400
Japan	649	742	650	700	700	700
Malaysia	907	1,076	1,006	1,050	1,100	1,100
Mexico	575	705	680	725	730	730
Mozambique	325	360	410	450	420	470
Nigeria	2,000	2,550	3,400	2,300	2,400	2,400
Philippines	2,400	1,200	1,500	1,500	1,200	1,200
Saudi Arabia	1,069	1,059	1,193	1,225	1,250	1,250
Senegal	685	805	1,200	1,000	1,000	1,000
South Africa	733	885	870	950	975	975
Thailand	300	200	600	600	600	600
United Arab Emirates	400	420	430	440	450	450
Yemen	330	337	420	425	450	450
Others	8,867	9,700	10,492	10,590	10,831	10,871
Subtotal	28,746	33,249	36,404	34,705	35,331	35,421
Unaccounted	2,261	2,376	2,104	2,172	2,081	1,796
United States	562	621	640	700	725	740
World Total	31,569	36,246	39,148	37,577	38,137	37,957

TY=Trade Year, see Endnotes.

Note about dates: 2013/14 is calendar year 2014, 2012/13 is calendar year 2013, and so on.

World Rice Production, Consumption, and Stocks
Local Marketing Years, Thousand Metric Tons

	2009/10	2010/11	2011/12	2012/13	2013/14 Jun	2013/14 Jul
Milled Production						
Bangladesh	31,000	31,700	33,700	34,000	34,200	34,200
Brazil	7,929	9,300	7,888	8,160	8,500	8,500
Burma	11,642	10,528	10,816	10,666	11,000	11,000
Cambodia	4,056	4,233	4,268	4,600	4,900	4,900
China	136,570	137,000	140,700	143,300	144,000	144,000
Egypt	4,564	3,100	4,250	4,675	4,850	4,850
India	89,090	95,980	105,310	104,000	108,000	108,000
Indonesia	36,370	35,500	36,500	37,500	37,700	37,700
Japan	7,711	7,720	7,646	7,756	7,720	7,720
Korea, South	4,916	4,295	4,224	4,006	4,220	4,220
Nigeria	2,234	2,818	2,877	2,370	3,100	3,100
Pakistan	6,800	5,000	6,200	5,600	6,200	6,200
Philippines	9,772	10,539	10,710	11,350	11,700	11,700
Thailand	20,260	20,262	20,460	20,200	21,100	21,100
Vietnam	24,993	26,371	27,152	27,375	27,850	27,670
Others	35,598	37,360	37,235	37,954	38,084	38,113
Subtotal	433,505	441,706	459,936	463,512	473,124	472,973
United States	7,133	7,593	5,866	6,334	6,038	5,720
World Total	440,638	449,299	465,802	469,846	479,162	478,693
Consumption and Residual						
Bangladesh	31,600	32,400	34,300	34,500	34,700	34,700
Brazil	8,477	8,200	7,928	7,900	7,800	7,800
Burma	10,890	10,100	10,200	10,200	10,250	10,250
Cambodia	3,270	3,370	3,450	3,615	3,800	3,800
China	134,320	135,000	139,600	144,000	147,000	147,000
Egypt	3,940	3,300	3,620	3,900	4,000	4,000
India	85,508	90,206	93,334	96,100	98,500	98,500
Indonesia	38,000	39,000	39,550	40,000	40,300	40,300
Japan	8,200	8,200	8,050	8,250	8,150	8,150
Korea, South	4,701	5,175	4,905	4,612	4,497	4,497
Nepal	3,060	2,713	3,224	3,320	3,350	3,350
Nigeria	4,350	5,000	5,400	5,400	5,500	5,400
Philippines	13,125	12,900	12,860	12,850	12,925	12,900
Thailand	10,200	10,300	10,400	10,600	10,600	10,700
Vietnam	19,150	19,400	19,650	20,100	20,600	20,600
Others	52,360	53,912	56,159	57,545	58,286	58,441
Subtotal	434,092	441,190	456,247	465,469	472,663	472,495
United States	4,016	4,317	3,470	3,809	3,657	3,563
World Total	438,108	445,507	459,717	469,278	476,320	476,058
Ending Stocks						
China	40,534	42,574	45,023	46,873	46,423	46,523
India	20,500	23,500	25,100	24,000	25,000	25,000
Indonesia	6,577	6,175	5,085	3,585	2,985	2,485
Japan	2,693	2,712	2,747	2,753	2,823	2,823
Philippines	3,520	2,459	1,509	1,409	1,409	1,409
Thailand	6,100	5,615	9,330	12,530	15,230	15,530
Vietnam	1,470	1,941	1,826	1,801	1,726	1,271
Others	12,357	12,237	12,889	11,395	11,969	12,064
Subtotal	93,751	97,213	103,509	104,346	107,565	107,105
United States	1,184	1,514	1,303	1,034	1,053	910
World Total	94,935	98,727	104,812	105,380	108,618	108,015

Note: All data are reported on a milled basis.

Regional Rice Imports, Production, Consumption, and Stocks

Thousand Metric Tons

	2009/10	2010/11	2011/12	2012/13	Jun 2013/14	Jul 2013/14
TY Imports						
North America	1,495	1,654	1,664	1,765	1,805	1,820
Caribbean	969	1,099	845	1,080	1,010	1,010
South America	1,354	1,396	1,896	1,962	1,907	1,907
Other Europe	116	128	114	122	122	122
Former Soviet Union - 12	401	335	403	403	426	426
Middle East	5,808	5,989	6,351	6,255	6,350	6,350
North Africa	345	364	747	500	495	495
Sub-Saharan Africa	8,208	9,800	12,222	10,815	11,260	11,350
East Asia	1,960	2,444	4,389	4,951	4,716	4,716
South Asia	1,016	1,864	666	852	1,000	1,000
Southeast Asia	5,537	6,504	5,595	4,680	4,925	4,925
Others	2,099	2,293	2,152	2,020	2,040	2,040
Total	29,308	33,870	37,044	35,405	36,056	36,161
Production						
North America	7,315	7,739	5,979	6,465	6,163	5,845
Caribbean	954	938	1,024	885	991	991
South America	15,664	17,197	15,183	15,803	16,179	16,258
European Union	2,176	2,172	2,105	2,101	2,107	2,107
Former Soviet Union - 12	1,144	1,321	1,294	1,286	1,304	1,254
Middle East	2,049	2,123	2,169	2,150	2,234	2,234
North Africa	4,598	3,139	4,289	4,704	4,889	4,889
Sub-Saharan Africa	11,159	13,032	12,419	12,350	12,895	12,895
East Asia	151,828	151,801	155,342	157,962	158,840	158,840
South Asia	132,878	138,116	151,656	149,735	154,620	154,620
Southeast Asia	110,063	110,476	112,992	114,867	117,501	117,321
Others	810	1,245	1,350	1,538	1,439	1,439
Total	440,638	449,299	465,802	469,846	479,162	478,693
Domestic Consumption						
North America	5,160	5,417	4,646	4,994	4,857	4,763
Central America	1,119	1,109	1,146	1,181	1,206	1,206
Caribbean	1,880	2,035	1,987	1,888	1,983	1,978
South America	14,880	14,457	14,195	14,355	14,251	14,321
European Union	3,150	3,250	3,135	3,140	3,150	3,150
Former Soviet Union - 12	1,327	1,428	1,418	1,425	1,460	1,460
Middle East	7,781	8,183	8,399	8,500	8,700	8,700
North Africa	4,307	3,657	4,005	4,379	4,509	4,509
Sub-Saharan Africa	19,414	21,426	23,144	23,791	24,129	24,119
East Asia	150,349	151,733	155,911	160,367	163,147	163,147
South Asia	126,275	130,592	136,781	139,958	142,610	142,610
Southeast Asia	98,916	99,572	100,672	102,011	103,211	103,286
Others	609	634	661	712	702	702
Total	435,167	443,493	456,100	466,701	473,915	473,951
Ending Stocks						
North America	1,322	1,734	1,455	1,205	1,227	1,084
Central America	246	249	269	286	294	294
Caribbean	126	131	198	141	163	164
South America	1,905	2,168	1,485	1,672	2,016	1,991
European Union	1,122	1,176	1,229	1,190	1,147	1,147
Middle East	1,634	1,723	1,492	1,347	1,161	1,161
North Africa	498	122	487	462	487	487
Sub-Saharan Africa	780	1,304	2,317	1,606	1,352	1,452
East Asia	45,098	46,690	48,874	50,725	50,479	50,579
South Asia	22,561	25,542	27,711	26,076	27,511	27,511
Southeast Asia	19,441	17,663	19,126	20,437	22,602	21,947
Oceania	46	27	34	114	65	84
Others	156	198	135	119	114	114
Total	94,935	98,727	104,812	105,380	108,618	108,015

NOTES: Regional definitions appear on last page of this circular. Imports are reported on a trade year basis. All other data are reported using local marketing years.

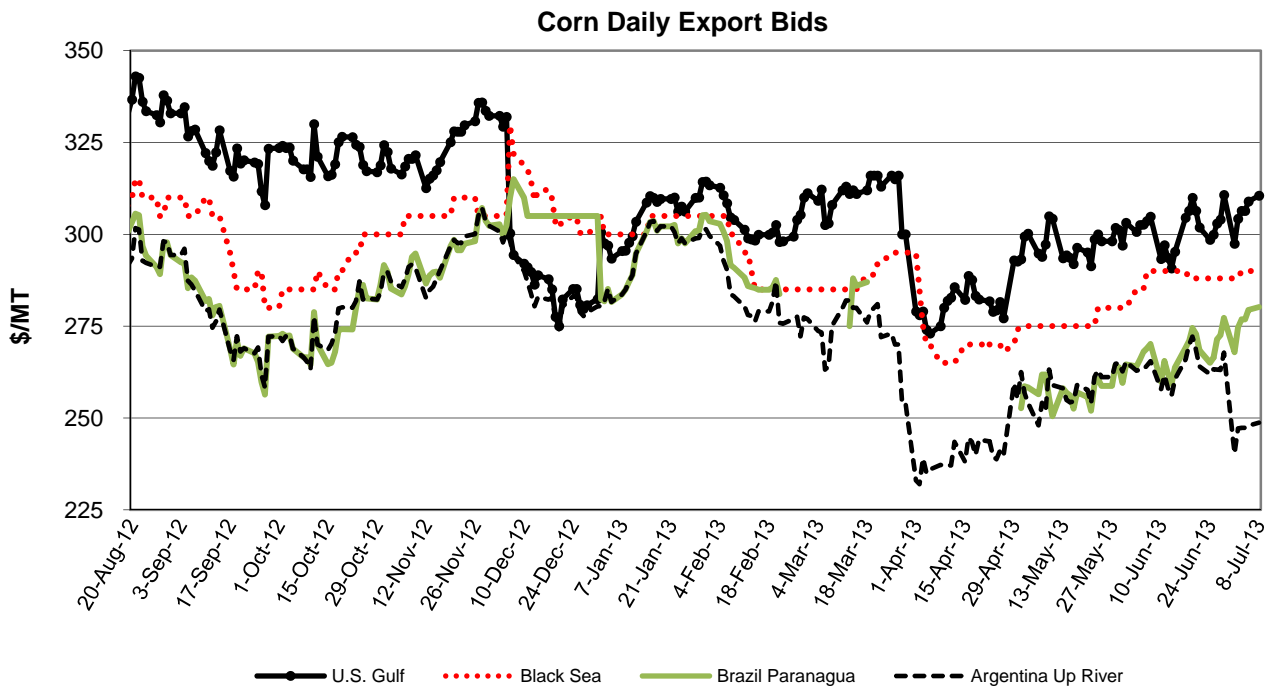
COARSE GRAINS: WORLD MARKETS AND TRADE

OVERVIEW

World corn production in 2013/14 is down slightly with smaller forecast crops in the United States and China. Global trade is mostly unchanged and the U.S. season-average farm price remains the same as the prior month's. For 2012/13, U.S. exports are lowered but the season-average farm price is unchanged.

PRICES

Since the release of the June WASDE report, U.S. corn quotes have mostly risen, gaining \$17/ton through the first week of July to nearly \$311/ton. The retreat following USDA's *Grain Stocks* and *Acreage* reports was short-lived as tight old-crop domestic supplies continue to outweigh weak foreign demand. Argentine quotes collapsed after the USDA reports and remain at sizeable discounts to both U.S. and Brazilian corn. Argentina's harvest is nearing completion and an export window of opportunity looms between Brazil's second crop and U.S. new-crop harvests. Ukrainian quotes were unchanged, reflecting slack old-crop trade.



TRADE CHANGES IN 2013/14

Selected Exporters

- **EU corn** is up 200,000 tons to 2.7 million on the integration of **Croatia** into the European Union (Croatia's data is removed from the database).

TRADE CHANGES IN 2012/13

Selected Exporters

- **U.S. corn** is slashed 1.0 million tons to 17.5 million as the slow pace of shipments is expected to continue through September; **Brazilian corn** is boosted 500,000 tons to 27.0 million.
- **Canadian corn** is raised 400,000 tons to 1.4 million on strong shipments to the United States.
- **EU barley** is boosted 200,000 tons to 4.2 million reflecting late-season export licenses.
- **U.S. sorghum** is cut 200,000 tons to 1.9 million on tight feed supplies through late summer.
- **Argentine sorghum** is up 200,000 tons to 3.6 million on strong early season (new-crop) shipments.

Selected Importers

- **U.S. corn** is boosted 200,000 tons to 4.0 million on imports from Brazil, Canada, and Argentina.
- **Ecuadorian** and **Salvadoran corn** are each cut 200,000 tons to 250,000 and 350,000, respectively, on a slow pace of shipments.
- **Indonesian corn** is raised 500,000 tons to 2.4 million on smaller old-crop production and larger-than-expected trade from India.
- **Mexican corn** is down 500,000 tons to 6.5 million due to the slow pace of shipments from the United States.
- **Chinese barley** is cut 200,000 tons to 2.2 million on weak demand from the brewing sector.
- **Saudi Arabian barley** is boosted 200,000 tons to 7.7 million based on trade data.

World Coarse Grain Trade
October/September Year, Thousand Metric Tons

	2009/10	2010/11	2011/12	2012/13	2013/14 Jun	2013/14 Jul
TY Exports						
Argentina	19,030	18,628	22,308	29,605	21,305	21,305
Australia	4,414	4,899	7,279	5,050	5,200	5,200
Brazil	8,627	11,592	12,677	27,030	18,005	18,005
Canada	3,070	4,428	3,854	4,675	4,350	4,450
European Union	4,293	5,865	7,152	5,955	6,555	6,755
India	2,072	3,437	4,858	5,275	3,575	3,575
Paraguay	1,363	1,201	2,188	2,405	2,305	2,305
Russia	2,526	1,029	5,997	4,435	6,410	6,410
Serbia	1,366	2,013	2,345	505	2,005	2,005
Ukraine	10,977	7,490	17,447	15,900	18,680	18,680
Others	7,124	6,187	7,121	5,845	5,855	5,955
Subtotal	64,862	66,769	93,226	106,680	94,245	94,645
United States	53,989	49,292	40,192	19,630	37,050	37,050
World Total	118,851	116,061	133,418	126,310	131,295	131,695
TY Imports						
Algeria	2,576	2,945	3,691	3,110	3,210	3,210
Brazil	1,049	633	1,211	1,105	1,205	1,205
Chile	1,275	1,271	1,523	1,475	1,525	1,525
China	3,777	2,697	7,924	5,450	9,450	9,450
Colombia	4,102	4,155	4,104	4,255	4,655	4,655
Cuba	736	838	746	850	900	900
Dominican Republic	1,071	1,001	1,054	1,100	1,200	1,200
Egypt	5,897	5,840	7,250	4,075	4,975	4,975
European Union	2,837	8,635	6,884	11,055	7,355	7,380
Indonesia	1,321	3,041	1,724	2,400	2,200	2,200
Iran	5,100	4,000	5,700	4,500	5,100	5,100
Israel	1,592	1,446	1,530	1,500	1,690	1,690
Japan	19,190	18,590	17,730	17,510	18,535	18,535
Jordan	713	917	1,158	1,350	1,300	1,300
Korea, South	8,509	8,168	7,726	8,090	8,290	8,290
Libya	1,238	543	829	750	850	850
Malaysia	3,107	2,809	3,309	3,100	3,400	3,400
Mexico	10,913	10,762	12,769	8,900	10,250	10,250
Morocco	2,194	2,059	2,479	1,950	2,250	2,250
Peru	1,886	2,079	1,928	2,060	2,260	2,260
Saudi Arabia	9,076	8,138	10,485	9,900	9,900	9,900
Taiwan	4,644	4,277	4,500	4,450	4,450	4,450
Tunisia	1,202	958	1,071	1,250	1,350	1,350
Venezuela	2,198	1,251	2,596	2,500	2,600	2,600
Vietnam	1,600	1,000	1,600	1,400	1,600	1,600
Others	15,200	14,537	14,858	13,455	13,100	13,200
Subtotal	113,003	112,590	126,379	117,540	123,600	123,725
Unaccounted	3,573	1,021	3,899	2,295	4,820	4,895
United States	2,275	2,450	3,140	6,475	2,875	3,075
World Total	118,851	116,061	133,418	126,310	131,295	131,695

TY=Trade Year, see Endnotes.

World Coarse Grains Production, Consumption, and Stocks
Local Marketing Years, Thousand Metric Tons

	2009/10	2010/11	2011/12	2012/13	2013/14 Jun	2013/14 Jul
Production						
Argentina	30,231	33,258	30,105	37,652	36,858	36,858
Australia	10,935	11,485	12,352	10,059	11,137	11,137
Brazil	58,182	60,380	75,884	79,767	74,813	74,813
Canada	22,780	22,668	22,921	24,296	25,825	26,275
China	169,775	183,771	199,297	212,390	218,480	217,480
Ethiopia	8,046	10,469	11,435	11,363	11,602	11,602
European Union	157,547	142,829	149,986	145,274	151,949	154,220
India	33,890	43,370	42,250	38,920	40,500	40,500
Indonesia	6,900	6,800	8,850	8,000	9,200	9,200
Mexico	27,273	29,226	25,753	29,078	30,465	30,465
Nigeria	23,250	23,250	23,850	21,273	21,900	21,900
Russia	31,843	16,416	33,077	28,658	36,100	36,100
South Africa	13,881	11,321	13,256	12,714	13,493	13,493
Turkey	11,176	10,185	11,275	10,575	12,275	12,275
Ukraine	24,185	21,503	33,476	29,527	34,500	34,500
Others	136,928	141,788	137,139	140,490	145,993	146,253
Subtotal	766,822	768,719	830,906	840,036	875,090	877,071
United States	348,755	330,236	323,728	286,005	372,569	370,462
World Total	1,115,577	1,098,955	1,154,634	1,126,041	1,247,659	1,247,533
Domestic Consumption						
Argentina	10,054	11,033	10,510	11,602	12,358	12,358
Brazil	49,514	52,733	53,738	56,088	57,133	57,133
Canada	22,746	21,201	20,281	20,786	21,100	21,300
China	173,251	188,448	196,992	216,075	233,125	233,125
Egypt	13,072	13,575	12,849	11,837	12,025	12,025
Ethiopia	8,543	9,925	11,260	11,307	11,625	11,625
European Union	152,412	154,657	151,066	153,605	152,100	154,620
India	32,000	38,850	37,850	34,225	36,750	36,750
Japan	19,645	18,875	17,990	17,710	18,730	18,730
Mexico	40,815	39,785	38,045	37,665	40,215	40,215
Nigeria	23,050	23,200	23,750	21,450	21,850	21,850
Russia	30,440	18,131	27,628	25,034	29,100	29,100
South Africa	10,833	11,213	11,252	11,378	11,573	11,573
Turkey	10,865	11,075	11,725	12,425	12,525	12,525
Ukraine	12,994	13,772	15,559	14,136	15,080	15,080
Others	199,629	205,196	205,672	211,430	217,117	217,232
Subtotal	817,704	832,501	864,700	860,204	910,015	911,618
United States	295,337	297,948	290,037	279,434	307,378	305,887
World Total	1,113,041	1,130,449	1,154,737	1,139,638	1,217,393	1,217,505
Ending Stocks						
Brazil	10,257	10,605	9,505	12,259	13,639	13,139
Canada	5,534	3,549	3,394	2,774	3,694	3,844
China	52,302	50,134	60,232	61,887	56,587	55,587
European Union	26,241	16,732	16,079	12,348	12,135	12,573
Iran	4,063	3,559	3,639	3,419	3,399	3,399
South Africa	5,367	3,581	3,881	3,397	3,397	3,397
Ukraine	2,217	2,149	2,421	1,992	2,842	2,812
Others	43,262	43,285	38,808	32,917	34,506	34,402
Subtotal	149,243	133,594	137,959	130,993	130,199	129,153
United States	48,133	32,288	27,820	21,189	53,217	53,057
World Total	197,376	165,882	165,779	152,182	183,416	182,210

Regional Coarse Grains Imports, Production, Consumption, and Stocks

Thousand Metric Tons

	2009/10	2010/11	2011/12	2012/13	Jun 2013/14	Jul 2013/14
TY Imports						
North America	15,199	14,267	16,673	15,920	13,670	13,870
Central America	2,537	2,900	2,768	2,800	3,000	3,000
Caribbean	2,139	2,195	2,159	2,330	2,480	2,480
South America	11,108	10,519	11,969	12,045	13,020	13,020
European Union	2,837	8,635	6,884	11,055	7,355	7,380
Former Soviet Union - 12	456	1,134	1,013	770	785	785
Middle East	21,263	18,690	23,337	21,480	21,330	21,430
North Africa	13,107	12,345	15,320	11,135	12,635	12,635
Sub-Saharan Africa	2,778	2,028	2,998	2,355	2,370	2,370
East Asia	36,249	33,888	38,062	35,630	40,855	40,855
Southeast Asia	6,725	7,558	7,317	7,470	7,945	7,945
Others	880	881	1,019	1,025	1,030	1,030
Total	115,278	115,040	129,519	124,015	126,475	126,800
Production						
North America	398,808	382,130	372,402	339,379	428,859	427,202
South America	101,826	106,037	117,972	130,901	125,143	125,143
European Union	157,547	142,829	149,986	145,274	151,949	154,220
Other Europe	9,387	9,800	9,383	6,265	9,971	9,971
Former Soviet Union - 12	67,674	47,582	78,669	69,021	82,336	82,596
Middle East	18,950	18,750	19,041	18,461	20,505	20,505
North Africa	14,858	12,452	11,220	10,479	11,854	11,854
Sub-Saharan Africa	92,424	100,727	99,503	101,665	101,744	101,744
East Asia	171,831	185,739	201,424	214,650	220,752	219,752
South Asia	40,511	49,884	48,901	45,746	47,326	47,326
Southeast Asia	25,451	26,374	28,379	28,607	30,590	30,590
Oceania	11,642	12,030	12,959	10,729	11,767	11,767
Others	4,668	4,621	4,795	4,864	4,863	4,863
Total	1,115,577	1,098,955	1,154,634	1,126,041	1,247,659	1,247,533
Domestic Consumption						
North America	358,898	358,934	348,363	337,885	368,693	367,402
South America	79,659	84,425	85,601	89,389	92,003	91,968
European Union	152,412	154,657	151,066	153,605	152,100	154,620
Other Europe	8,518	8,495	8,214	6,702	8,376	8,376
Former Soviet Union - 12	55,033	41,882	54,283	50,276	55,531	55,631
Middle East	38,699	38,308	40,085	41,304	41,674	41,974
North Africa	24,626	25,685	25,353	23,467	25,055	25,055
Sub-Saharan Africa	92,193	99,665	98,182	102,380	102,218	102,218
East Asia	208,034	221,795	229,527	248,521	266,806	266,806
South Asia	38,754	45,439	44,683	40,993	43,213	43,213
Southeast Asia	31,175	33,139	34,612	35,700	37,605	37,405
Oceania	7,761	7,495	6,543	5,982	6,317	6,317
Others	9,438	9,698	9,692	9,983	10,193	10,143
Total	1,105,200	1,129,617	1,136,204	1,146,187	1,209,784	1,211,128
Ending Stocks						
North America	55,673	37,933	33,080	25,992	59,290	59,280
South America	17,444	20,111	13,459	16,125	18,193	17,575
European Union	26,241	16,732	16,079	12,348	12,135	12,573
Other Europe	1,377	1,406	1,010	899	1,329	1,329
Former Soviet Union - 12	7,402	5,500	6,321	4,801	6,481	6,511
Middle East	9,271	7,508	9,416	8,522	8,493	8,393
North Africa	5,255	4,772	5,426	3,810	3,219	3,219
Sub-Saharan Africa	10,223	9,992	10,679	9,169	8,250	8,250
East Asia	55,775	53,394	63,247	64,896	59,592	58,592
South Asia	1,674	2,654	2,104	1,452	1,965	1,965
Southeast Asia	3,379	3,508	3,068	2,510	2,364	2,500
Oceania	2,807	1,584	1,100	897	1,179	1,097
Others	855	788	790	761	926	926
Total	197,376	165,882	165,779	152,182	183,416	182,210

NOTES: Regional definitions appear on last page of this circular. Imports are reported on a trade year basis. All other data are reported using local marketing years.

World Corn Trade
October/September Year, Thousand Metric Tons

	2009/10	2010/11	2011/12	2012/13	2013/14 Jun	2013/14 Jul
TY Exports						
Argentina	16,973	15,198	16,501	22,000	16,000	16,000
Brazil	8,623	11,583	12,674	27,000	18,000	18,000
Canada	186	1,658	494	1,400	1,000	1,000
European Union	1,569	1,096	3,287	1,500	2,500	2,700
India	1,917	3,376	4,674	4,800	3,500	3,500
Paraguay	1,359	1,201	2,188	2,400	2,300	2,300
Russia	427	37	2,027	2,000	2,500	2,500
Serbia	1,343	2,004	2,331	500	2,000	2,000
South Africa	1,586	2,839	1,831	1,900	1,900	1,900
Ukraine	5,072	5,008	15,157	13,500	16,500	16,500
Others	3,972	2,543	4,161	3,190	3,000	3,000
Subtotal	43,027	46,543	65,325	80,190	69,200	69,400
United States	49,721	45,244	38,430	17,500	33,000	33,000
World Total	92,748	91,787	103,755	97,690	102,200	102,400
TY Imports						
Algeria	2,569	2,683	3,203	2,800	3,000	3,000
Brazil	699	287	937	800	800	800
Chile	663	526	906	800	850	850
China	1,296	979	5,231	3,000	7,000	7,000
Colombia	3,651	3,511	3,209	3,200	3,600	3,600
Costa Rica	626	663	691	750	750	750
Cuba	736	838	746	850	900	900
Dominican Republic	1,071	1,001	1,054	1,100	1,200	1,200
Egypt	5,832	5,803	7,154	4,000	4,900	4,900
European Union	2,758	7,385	6,113	10,500	7,000	7,000
Guatemala	651	676	691	750	750	750
Indonesia	1,321	3,041	1,724	2,400	2,200	2,200
Iran	4,300	3,500	4,000	3,500	4,100	4,100
Israel	1,053	1,029	1,221	1,200	1,400	1,400
Japan	15,971	15,648	14,892	14,500	15,500	15,500
Korea, South	8,461	8,107	7,636	8,000	8,200	8,200
Malaysia	3,107	2,809	3,309	3,100	3,400	3,400
Mexico	8,298	8,252	11,122	6,500	6,500	6,500
Morocco	1,802	1,738	1,943	1,700	2,000	2,000
Peru	1,782	1,939	1,772	1,900	2,100	2,100
Saudi Arabia	1,872	1,933	1,816	2,100	2,300	2,300
Taiwan	4,521	4,134	4,341	4,300	4,300	4,300
Tunisia	866	677	853	750	850	850
Venezuela	2,198	1,251	2,596	2,500	2,600	2,600
Vietnam	1,600	1,000	1,600	1,400	1,600	1,600
Others	12,095	10,884	11,402	10,070	10,395	10,395
Subtotal	89,799	90,294	100,162	92,470	98,195	98,195
Unaccounted	2,712	809	2,828	1,220	3,355	3,455
United States	237	684	765	4,000	650	750
World Total	92,748	91,787	103,755	97,690	102,200	102,400

TY=Trade Year, see Endnotes.

World Corn Production, Consumption, and Stocks
Local Marketing Years, Thousand Metric Tons

	2009/10	2010/11	2011/12	2012/13	2013/14 Jun	2013/14 Jul
Production						
Argentina	25,000	25,200	21,000	26,500	27,000	27,000
Brazil	56,100	57,400	73,000	77,000	72,000	72,000
Canada	9,796	12,043	11,359	13,060	13,800	13,800
China	163,974	177,245	192,780	205,600	212,000	211,000
Egypt	6,280	6,500	5,500	5,800	5,600	5,600
European Union	59,147	58,265	68,089	58,539	63,875	65,625
India	16,720	21,730	21,760	21,500	21,500	21,500
Indonesia	6,900	6,800	8,850	8,000	9,200	9,200
Mexico	20,374	21,058	18,726	21,500	23,000	23,000
Nigeria	8,950	8,800	9,250	7,630	7,700	7,700
Philippines	6,231	7,271	7,130	7,267	7,400	7,400
Russia	3,963	3,075	6,962	8,213	9,500	9,500
Serbia	6,400	6,800	6,400	3,500	7,000	7,000
South Africa	13,420	10,924	12,759	12,200	13,000	13,000
Ukraine	10,486	11,919	22,838	20,922	26,000	26,000
Others	77,878	80,484	82,900	83,985	86,164	86,164
Subtotal	491,619	515,514	569,303	581,216	604,739	605,489
United States	332,549	316,165	313,949	273,832	355,743	354,346
World Total	824,168	831,679	883,252	855,048	960,482	959,835
Total Consumption						
Argentina	6,900	7,300	7,000	7,600	8,300	8,300
Brazil	47,000	49,500	50,500	53,000	54,000	54,000
Canada	11,868	11,761	11,636	12,100	12,800	12,800
China	165,000	180,000	188,000	207,000	224,000	224,000
Egypt	12,000	12,500	11,700	10,700	10,900	10,900
European Union	61,300	64,900	69,200	69,000	67,800	70,000
India	15,100	18,100	17,200	16,700	17,900	17,900
Indonesia	8,800	9,800	10,500	10,600	11,400	11,200
Japan	16,300	15,700	14,900	14,500	15,500	15,500
Korea, South	8,382	8,214	7,815	8,100	8,300	8,300
Mexico	30,200	29,500	29,000	27,700	29,000	29,000
Nigeria	8,800	8,800	9,250	7,800	7,700	7,700
Philippines	6,500	7,200	7,400	7,400	7,500	7,500
South Africa	10,300	10,650	10,700	10,800	11,000	11,000
Ukraine	5,700	6,500	7,800	7,700	8,600	8,600
Others	123,083	125,009	130,466	133,298	138,932	138,822
Subtotal	544,278	564,484	600,085	597,193	639,624	640,316
United States	281,590	285,014	279,023	266,711	293,383	292,114
World Total	825,868	849,498	879,108	863,904	933,007	932,430
Ending Stocks						
Brazil	9,989	10,276	9,210	12,010	13,310	12,810
Canada	1,731	1,263	1,365	1,425	1,925	1,925
China	51,302	49,415	59,335	60,885	55,835	54,835
European Union	5,568	5,222	6,937	5,476	5,034	5,401
Mexico	1,389	1,112	1,266	1,416	1,766	1,766
South Africa	5,169	3,418	3,676	3,201	3,226	3,226
Ukraine	672	1,121	1,051	823	1,773	1,773
Others	26,898	27,808	24,461	19,805	19,319	19,467
Subtotal	102,718	99,635	107,301	105,041	102,188	101,203
United States	43,380	28,644	25,122	18,526	49,515	49,769
World Total	146,098	128,279	132,423	123,567	151,703	150,972

Regional Corn Imports, Production, Consumption, and Stocks

Thousand Metric Tons

	2009/10	2010/11	2011/12	2012/13	Jun 2013/14	Jul 2013/14
TY Imports						
North America	10,496	9,920	12,634	11,000	7,650	7,750
Central America	2,537	2,889	2,765	2,800	3,000	3,000
South America	9,469	8,372	9,886	9,565	10,540	10,540
European Union	2,758	7,385	6,113	10,500	7,000	7,000
Former Soviet Union - 12	259	324	328	290	290	290
Middle East	11,187	9,942	10,686	10,325	10,875	10,875
North Africa	11,725	11,265	13,799	9,800	11,400	11,400
Sub-Saharan Africa	1,821	1,547	2,381	1,835	1,885	1,885
East Asia	30,378	29,024	32,282	29,930	35,130	35,130
Southeast Asia	6,709	7,541	7,304	7,450	7,925	7,925
Caribbean	2,139	2,195	2,159	2,330	2,480	2,480
Others	558	574	590	645	670	670
Total	90,036	90,978	100,927	96,470	98,845	98,945
Production						
North America	362,719	349,266	344,034	308,392	392,543	391,146
South America	92,518	93,105	103,988	114,736	110,265	110,265
European Union	59,147	58,265	68,089	58,539	63,875	65,625
Other Europe	7,615	8,071	7,673	4,580	8,255	8,255
Former Soviet Union - 12	17,727	18,434	34,121	32,395	39,760	39,760
Middle East	6,305	6,039	5,968	6,783	6,683	6,683
North Africa	6,486	6,780	5,701	6,001	5,801	5,801
Sub-Saharan Africa	53,975	54,929	58,773	55,721	57,098	57,098
East Asia	165,679	178,947	194,582	207,535	213,934	212,934
South Asia	22,020	26,956	27,198	26,938	26,938	26,938
Central America	3,542	3,549	3,698	3,740	3,743	3,743
Southeast Asia	25,212	26,135	28,138	28,370	30,350	30,350
Others	1,223	1,203	1,289	1,318	1,237	1,237
Total	824,168	831,679	883,252	855,048	960,482	959,835
Domestic Consumption						
North America	323,658	326,275	319,659	306,511	335,183	333,914
South America	70,639	73,923	75,196	78,170	80,755	80,695
European Union	61,300	64,900	69,200	69,000	67,800	70,000
Other Europe	6,487	6,499	6,244	4,735	6,385	6,385
Former Soviet Union - 12	12,965	13,185	16,320	17,635	19,685	19,685
Middle East	16,885	16,885	16,848	17,760	17,810	17,810
North Africa	17,650	18,525	18,000	17,100	17,600	17,600
Sub-Saharan Africa	52,175	54,317	56,680	56,343	57,167	57,167
East Asia	196,111	209,870	217,047	235,855	254,055	254,055
South Asia	20,475	23,381	22,770	22,070	22,970	22,970
Southeast Asia	30,943	32,893	34,357	35,450	37,350	37,150
Central America	6,250	6,375	6,425	6,500	6,700	6,650
Others	3,285	3,420	3,344	3,580	3,555	3,555
Total	818,823	850,448	862,090	870,709	927,015	927,636
Ending Stocks						
North America	46,500	31,019	27,753	21,367	53,206	53,460
South America	16,383	17,943	12,425	15,028	16,461	15,973
European Union	5,568	5,222	6,937	5,476	5,034	5,401
Other Europe	1,125	1,150	710	575	985	985
Former Soviet Union - 12	1,536	1,904	2,545	1,735	2,765	2,765
Middle East	4,409	3,509	3,448	2,731	2,439	2,439
North Africa	2,258	2,102	2,939	1,880	1,471	1,471
Sub-Saharan Africa	8,979	7,939	9,063	7,316	6,512	6,512
East Asia	54,090	52,055	61,806	63,366	58,325	57,325
South Asia	996	1,140	933	821	1,209	1,209
Southeast Asia	3,376	3,504	3,065	2,505	2,359	2,495
Central America	559	552	569	579	647	647
Others	319	240	230	188	290	290
Total	146,098	128,279	132,423	123,567	151,703	150,972

NOTES: Regional definitions appear on last page of this circular. Imports are reported on a trade year basis. All other data are reported using local marketing years.

World Barley Trade
October/September Year, Thousand Metric Tons

	2009/10	2010/11	2011/12	2012/13	2013/14 Jun	2013/14 Jul
TY Exports						
Argentina	549	1,531	3,631	4,000	2,300	2,300
Australia	3,846	4,088	5,819	3,800	4,100	4,100
Canada	1,203	1,052	1,437	1,500	1,500	1,600
Chile	0	1	2	5	5	5
China	13	9	4	10	5	5
Egypt	14	14	0	10	10	10
European Union	2,368	4,581	3,621	4,200	3,800	3,800
India	31	30	52	275	50	50
Kazakhstan	354	224	659	200	400	500
Moldova	45	10	5	10	10	10
Russia	2,086	969	3,668	2,300	3,800	3,800
Serbia	22	9	14	5	5	5
Turkey	801	1	103	50	50	50
Ukraine	5,752	2,446	2,166	2,200	2,000	2,000
Uruguay	0	0	0	100	25	25
Others	26	6	13	30	0	0
Subtotal	17,110	14,971	21,194	18,695	18,060	18,260
United States	152	181	179	200	200	200
World Total	17,262	15,152	21,373	18,895	18,260	18,460
TY Imports						
Algeria	6	262	479	300	200	200
Brazil	346	345	274	300	400	400
China	2,341	1,656	2,541	2,200	2,200	2,200
Colombia	237	251	301	250	250	250
Iran	800	500	1,700	1,000	1,000	1,000
Israel	491	287	276	200	225	225
Japan	1,411	1,359	1,257	1,300	1,300	1,300
Jordan	432	544	750	900	850	850
Kuwait	283	317	350	250	250	250
Libya	582	179	183	200	200	200
Morocco	248	222	536	250	250	250
Russia	13	411	372	250	250	250
Saudi Arabia	7,200	6,200	8,600	7,700	7,500	7,500
Tunisia	336	281	218	500	500	500
United Arab Emirates	299	334	525	400	300	400
Others	1,372	1,737	1,963	1,900	1,490	1,490
Subtotal	16,397	14,885	20,325	17,900	17,165	17,265
Unaccounted	563	119	579	495	645	645
United States	302	148	469	500	450	550
World Total	17,262	15,152	21,373	18,895	18,260	18,460

TY=Trade Year, see Endnotes.

World Barley Production, Consumption, and Stocks
Local Marketing Years, Thousand Metric Tons

	2009/10	2010/11	2011/12	2012/13	2013/14 Jun	2013/14 Jul
Production						
Algeria	2,400	1,500	1,350	1,500	1,750	1,750
Argentina	1,356	2,950	4,500	5,500	4,000	4,000
Australia	7,865	7,995	8,349	6,761	7,400	7,400
Belarus	2,123	1,966	2,013	2,100	1,700	1,700
Canada	9,528	7,627	7,892	8,010	8,550	9,000
China	2,318	1,972	2,300	2,350	2,300	2,300
Ethiopia	1,569	1,525	1,592	1,620	1,632	1,632
European Union	62,393	53,691	52,026	54,624	55,584	56,046
India	1,690	1,350	1,660	1,620	1,700	1,700
Iran	3,446	3,210	2,900	3,400	3,400	3,400
Kazakhstan	2,519	1,313	2,593	1,500	2,000	2,200
Morocco	3,800	2,570	2,340	1,200	2,600	2,600
Russia	17,881	8,350	16,938	13,952	17,500	17,500
Turkey	6,500	5,900	7,000	5,500	7,100	7,100
Ukraine	11,833	8,484	9,098	6,935	7,000	7,000
Others	8,682	8,279	8,475	8,304	8,811	8,871
Subtotal	145,903	118,682	131,026	124,876	133,027	134,199
United States	4,949	3,925	3,392	4,796	4,790	4,779
World Total	150,852	122,607	134,418	129,672	137,817	138,978
Total Consumption						
Algeria	1,350	1,600	1,800	2,000	2,150	2,150
Australia	4,500	4,200	3,300	3,100	3,300	3,300
Belarus	2,200	2,000	2,100	2,200	1,900	1,900
Canada	8,717	7,464	6,916	6,800	6,800	7,000
China	4,500	4,050	4,600	4,500	4,600	4,600
Ethiopia	1,550	1,525	1,535	1,432	1,650	1,650
European Union	56,770	56,610	51,230	51,820	51,650	51,870
India	1,500	1,350	1,550	1,525	1,650	1,650
Iran	3,700	3,700	3,900	4,500	4,200	4,200
Kazakhstan	2,000	1,475	1,825	1,375	1,600	1,650
Morocco	2,900	3,050	3,100	1,900	2,800	2,800
Russia	16,650	9,500	14,300	12,100	13,300	13,300
Saudi Arabia	7,425	6,325	7,225	7,925	7,725	7,925
Turkey	5,900	6,000	6,750	6,100	6,700	6,700
Ukraine	5,600	6,000	6,300	5,000	5,100	5,100
Others	14,805	14,716	15,326	15,245	15,412	15,562
Subtotal	140,373	131,278	131,536	127,957	131,315	132,126
United States	4,604	4,537	4,193	4,668	5,007	5,007
World Total	144,977	135,815	135,729	132,625	136,322	137,133
Ending Stocks						
Algeria	1,247	1,236	1,435	1,235	1,035	1,035
Canada	2,502	1,502	1,195	930	1,205	1,355
European Union	15,552	7,938	6,184	4,388	4,748	4,864
Iran	1,268	1,178	1,378	1,778	1,978	1,978
Russia	2,395	1,386	848	650	1,300	1,300
Saudi Arabia	2,078	1,253	2,728	2,603	2,278	2,178
Turkey	790	724	910	510	910	910
Others	8,998	6,975	6,842	6,031	6,293	6,252
Subtotal	34,830	22,192	21,520	18,125	19,747	19,872
United States	2,515	1,945	1,306	1,748	1,617	1,846
World Total	37,345	24,137	22,826	19,873	21,364	21,718

Regional Barley Imports, Production, Consumption, and Stocks

Thousand Metric Tons

	2009/10	2010/11	2011/12	2012/13	Jun 2013/14	Jul 2013/14
TY Imports						
North America	373	227	619	625	625	725
South America	772	905	851	960	960	960
European Union	66	288	340	100	100	100
Other Europe	134	189	209	230	205	205
Former Soviet Union - 12	195	654	672	480	495	495
Middle East	10,019	8,604	12,532	10,950	10,285	10,385
North Africa	1,215	960	1,458	1,300	1,200	1,200
Sub-Saharan Africa	59	76	80	70	65	65
East Asia	3,842	3,107	3,946	3,625	3,625	3,625
South Asia	10	8	68	55	50	50
Oceania	14	15	19	5	5	5
Total	16,699	15,033	20,794	18,400	17,615	17,815
Production						
North America	14,996	12,224	11,771	13,369	13,890	14,329
South America	2,443	3,869	5,535	6,604	5,140	5,140
European Union	62,393	53,691	52,026	54,624	55,584	56,046
Other Europe	1,163	1,112	1,163	1,181	1,212	1,212
Former Soviet Union - 12	35,988	21,682	32,245	25,977	29,720	29,980
Middle East	11,320	11,100	11,670	10,275	12,419	12,419
North Africa	7,340	4,589	4,448	3,408	4,983	4,983
Sub-Saharan Africa	1,933	1,865	2,049	2,058	2,047	2,047
East Asia	2,646	2,215	2,602	2,652	2,615	2,615
South Asia	2,330	1,957	2,192	2,327	2,407	2,407
Oceania	8,300	8,303	8,717	7,197	7,800	7,800
Total	150,852	122,607	134,418	129,672	137,817	138,978
Domestic Consumption						
North America	14,021	12,701	11,809	12,118	12,507	12,707
South America	2,933	2,937	3,072	3,490	3,270	3,270
European Union	56,770	56,610	51,230	51,820	51,650	51,870
Other Europe	1,282	1,309	1,336	1,370	1,399	1,399
Former Soviet Union - 12	28,088	20,677	26,323	22,285	23,510	23,610
Middle East	20,403	19,694	21,786	21,896	22,286	22,586
North Africa	5,847	5,925	6,199	5,262	6,350	6,350
Sub-Saharan Africa	1,963	1,961	1,998	1,937	2,160	2,160
East Asia	6,276	5,771	6,375	6,250	6,355	6,355
South Asia	2,163	1,967	2,122	2,237	2,357	2,357
Oceania	4,925	4,550	3,700	3,525	3,700	3,700
Total	144,671	134,102	135,950	132,190	135,544	136,364
Ending Stocks						
North America	5,214	3,647	2,621	2,811	2,955	3,334
South America	601	851	590	532	932	932
European Union	15,552	7,938	6,184	4,388	4,748	4,864
Other Europe	203	191	206	238	251	251
Former Soviet Union - 12	4,472	2,830	2,740	2,202	2,697	2,757
Middle East	4,813	3,923	5,878	5,707	5,975	5,875
North Africa	2,953	2,612	2,451	1,899	1,722	1,722
Sub-Saharan Africa	240	226	342	528	480	480
East Asia	1,139	681	850	867	747	747
South Asia	224	197	258	118	168	168
Oceania	1,934	1,041	706	583	689	588
Total	37,345	24,137	22,826	19,873	21,364	21,718

NOTES: Regional definitions appear on last page of this circular. Imports are reported on a trade year basis. All other data are reported using local marketing years.

World Sorghum Trade
October/September Year, Thousand Metric Tons

	2009/10	2010/11	2011/12	2012/13	2013/14 Jun	2013/14 Jul
TY Exports						
Argentina	1,507	1,893	2,163	3,600	3,000	3,000
Australia	350	575	1,185	1,000	900	900
China	41	68	36	50	50	50
Ethiopia	0	75	75	75	75	75
India	124	31	132	200	25	25
Nigeria	50	60	75	0	50	50
Ukraine	41	34	113	150	150	150
Others	178	80	128	145	130	130
Subtotal	2,291	2,816	3,907	5,220	4,380	4,380
United States	4,074	3,827	1,548	1,900	3,800	3,800
World Total	6,365	6,643	5,455	7,120	8,180	8,180
TY Imports						
Chile	568	729	544	600	600	600
China	83	4	84	200	200	200
Colombia	212	391	592	800	800	800
European Union	7	922	126	350	150	175
Japan	1,649	1,418	1,481	1,600	1,600	1,600
Mexico	2,527	2,381	1,369	2,200	3,500	3,500
Peru	31	57	59	60	60	60
Saudi Arabia	4	5	69	100	100	100
Sudan	400	200	125	100	100	100
Taiwan	71	97	84	100	100	100
Others	795	509	525	490	435	435
Subtotal	6,347	6,713	5,058	6,600	7,645	7,670
Unaccounted	18	-72	394	220	535	510
United States	0	2	3	300	0	0
World Total	6,365	6,643	5,455	7,120	8,180	8,180

TY=Trade Year, see Endnotes.

World Sorghum Production, Consumption, and Stocks
Local Marketing Years, Thousand Metric Tons

	2009/10	2010/11	2011/12	2012/13	2013/14 Jun	2013/14 Jul
Production						
Argentina	3,629	4,400	4,200	5,200	5,400	5,400
Australia	1,508	1,935	2,223	1,721	2,100	2,100
Brazil	1,624	2,314	2,222	2,116	2,100	2,100
Burkina	1,522	1,950	1,500	1,924	1,800	1,800
Chad	600	1,000	648	1,200	900	900
China	1,677	2,456	2,050	2,190	2,000	2,000
Egypt	900	900	900	900	900	900
Ethiopia	2,084	3,465	3,781	3,570	3,700	3,700
India	6,700	7,000	6,030	5,300	5,800	5,800
Mali	980	925	1,191	1,117	1,100	1,100
Mexico	6,250	7,385	6,425	6,900	6,800	6,800
Niger	739	1,300	700	1,000	1,000	1,000
Nigeria	6,600	6,750	6,900	5,943	6,500	6,500
Sudan	2,630	4,606	2,089	4,271	3,800	3,800
Tanzania	710	800	807	800	760	760
Others	6,207	6,520	6,925	6,944	7,235	7,205
Subtotal	44,360	53,706	48,591	51,096	51,895	51,865
United States	9,728	8,779	5,447	6,272	10,795	10,033
World Total	54,088	62,485	54,038	57,368	62,690	61,898
Total Consumption						
Argentina	1,900	1,900	1,900	2,050	2,300	2,300
Australia	1,205	1,405	1,105	905	1,105	1,105
Brazil	1,675	2,275	2,275	2,100	2,100	2,100
Burkina	1,686	1,800	1,500	1,900	1,800	1,800
Chad	625	950	700	1,150	950	950
China	1,900	2,200	2,200	2,300	2,300	2,300
Colombia	380	580	755	955	980	980
Ethiopia	2,400	3,200	3,700	3,700	3,700	3,700
India	6,600	6,800	6,100	5,100	5,700	5,700
Japan	1,650	1,460	1,475	1,600	1,600	1,600
Mali	980	925	1,191	1,117	1,100	1,100
Mexico	9,700	9,400	8,100	9,100	10,300	10,300
Niger	900	1,250	850	1,025	1,050	1,050
Nigeria	6,550	6,700	6,800	5,950	6,450	6,450
Sudan	3,400	4,500	2,650	4,200	3,900	3,900
Others	8,754	10,180	9,522	9,815	9,770	9,770
Subtotal	50,656	55,556	52,347	52,602	55,700	55,675
United States	5,859	5,278	3,954	4,877	6,096	5,842
World Total	56,515	60,834	56,301	57,479	61,796	61,517
Ending Stocks						
Argentina	152	950	167	217	417	317
Australia	681	361	214	130	154	175
China	275	467	365	405	255	255
India	154	327	123	123	198	198
Mexico	413	779	473	473	473	473
Nigeria	200	190	215	208	208	208
Sudan	309	610	154	320	315	315
Others	949	1,451	1,275	1,204	1,144	1,139
Subtotal	3,133	5,135	2,986	3,080	3,164	3,080
United States	1,048	697	583	378	1,445	759
World Total	4,181	5,832	3,569	3,458	4,609	3,839

Regional Sorghum Imports, Production, Consumption, and Stocks

Thousand Metric Tons

	2009/10	2010/11	2011/12	2012/13	Jun 2013/14	Jul 2013/14
TY Imports						
North America	2,527	2,383	1,372	2,500	3,500	3,500
South America	848	1,218	1,200	1,495	1,495	1,495
European Union	7	922	126	350	150	175
Other Europe	17	0	0	0	0	0
Middle East	48	121	101	175	150	150
North Africa	166	120	54	25	25	25
Sub-Saharan Africa	877	390	526	425	395	395
East Asia	1,806	1,523	1,655	1,905	1,905	1,905
Southeast Asia	16	17	13	20	20	20
Others	35	21	14	5	5	5
Total	6,347	6,715	5,061	6,900	7,645	7,670
Production						
North America	15,978	16,164	11,872	13,172	17,595	16,833
Central America	341	287	312	339	335	335
Caribbean	128	128	128	128	128	128
South America	5,923	7,351	7,124	8,008	8,242	8,242
European Union	621	629	671	485	607	577
Middle East	581	807	640	640	640	640
North Africa	911	906	915	915	915	915
Sub-Saharan Africa	19,459	24,542	21,678	24,045	23,858	23,858
East Asia	1,697	2,476	2,070	2,210	2,020	2,020
South Asia	6,845	7,145	6,175	5,445	5,945	5,945
Southeast Asia	54	54	54	52	55	55
Oceania	1,508	1,935	2,223	1,721	2,100	2,100
Others	42	61	176	208	250	250
Total	54,088	62,485	54,038	57,368	62,690	61,898
Domestic Consumption						
North America	15,559	14,678	12,054	13,977	16,396	16,142
Central America	325	300	320	325	335	335
Caribbean	128	128	128	128	128	128
South America	5,145	5,934	6,110	6,267	6,562	6,562
European Union	630	1,550	760	830	750	750
Middle East	669	916	677	850	800	800
North Africa	1,008	1,057	990	940	940	940
Sub-Saharan Africa	20,978	24,010	22,469	24,232	24,130	24,130
East Asia	3,643	3,779	3,786	4,020	4,030	4,030
South Asia	6,780	6,955	6,255	5,250	5,850	5,850
Southeast Asia	47	61	68	65	70	70
Oceania	1,205	1,405	1,105	905	1,105	1,105
Others	47	30	55	55	105	105
Total	56,164	60,803	54,777	57,844	61,201	60,947
Ending Stocks						
North America	1,461	1,476	1,056	851	1,918	1,232
Central America	43	32	25	34	29	29
South America	365	1,192	348	429	664	564
European Union	24	20	13	13	15	10
Middle East	22	35	44	34	24	24
North Africa	43	57	34	29	24	24
Sub-Saharan Africa	980	1,774	1,243	1,296	1,224	1,224
East Asia	397	549	452	497	342	342
South Asia	154	327	123	123	198	198
Oceania	681	361	214	130	154	175
Others	11	9	17	22	17	17
Total	4,181	5,832	3,569	3,458	4,609	3,839

NOTES: Regional definitions appear on last page of this circular. Imports are reported on a trade year basis. All other data are reported using local marketing years.

World Oats Trade
October/September Year, Thousand Metric Tons

	2009/10	2010/11	2011/12	2012/13	2013/14 Jun	2013/14 Jul
TY Exports						
Argentina	1	6	13	5	5	5
Australia	211	211	174	150	150	150
Brazil	4	9	3	5	5	5
Canada	1,539	1,497	1,764	1,600	1,700	1,700
Chile	37	129	106	100	100	100
European Union	215	113	176	150	150	150
Russia	4	1	18	10	10	10
Others	20	4	6	10	10	10
Subtotal	2,031	1,970	2,260	2,030	2,130	2,130
United States	38	37	27	25	45	45
World Total	2,069	2,007	2,287	2,055	2,175	2,175
TY Imports						
Albania	5	5	0	0	0	0
Algeria	1	0	9	10	10	10
Bosnia and Herzegovina	3	5	3	5	5	5
Canada	21	18	11	20	20	20
China	57	58	68	50	50	50
Colombia	2	2	2	5	5	5
Ecuador	11	11	22	15	15	15
European Union	2	4	3	5	5	5
Japan	56	64	54	60	60	60
Mexico	46	103	134	100	100	100
Norway	34	10	49	15	25	25
South Africa	21	15	11	25	25	25
Switzerland	49	49	56	50	50	50
Turkey	0	4	4	5	5	5
Uruguay	4	11	8	5	5	5
Others	3	8	9	0	0	0
Subtotal	315	367	443	370	380	380
Unaccounted	147	172	115	185	195	195
United States	1,607	1,468	1,729	1,500	1,600	1,600
World Total	2,069	2,007	2,287	2,055	2,175	2,175

TY=Trade Year, see Endnotes.

World Oats Production, Consumption, and Stocks
Local Marketing Years, Thousand Metric Tons

	2009/10	2010/11	2011/12	2012/13	2013/14 Jun	2013/14 Jul
Production						
Algeria	96	140	126	125	125	125
Argentina	182	660	345	400	400	400
Australia	1,162	1,128	1,274	1,048	1,200	1,200
Belarus	552	442	448	600	450	450
Brazil	253	379	354	361	380	380
Canada	2,912	2,451	3,158	2,680	3,100	3,100
Chile	381	564	505	680	595	595
China	580	525	600	600	580	580
European Union	8,641	7,500	7,908	7,909	8,016	8,098
Kazakhstan	204	134	258	200	200	200
Mexico	130	111	115	115	115	115
Norway	277	299	231	225	225	225
Russia	5,401	3,218	5,332	4,027	5,000	5,000
Turkey	218	204	210	210	210	210
Ukraine	731	458	506	630	450	450
Others	348	359	343	298	313	313
Subtotal	22,068	18,572	21,713	20,108	21,359	21,441
United States	1,351	1,178	779	929	1,060	1,081
World Total	23,419	19,750	22,492	21,037	22,419	22,522
Total Consumption						
Algeria	96	141	134	135	135	135
Argentina	200	650	350	400	400	400
Australia	975	900	1,100	900	900	900
Belarus	575	475	450	575	475	475
Brazil	250	370	350	350	370	370
Canada	1,767	1,530	1,356	1,550	1,250	1,250
Chile	350	475	375	575	500	525
China	625	625	625	625	625	625
European Union	8,157	7,793	7,672	7,755	7,900	8,000
Kazakhstan	210	130	225	225	175	175
Mexico	215	185	245	215	215	215
Norway	320	295	245	245	245	245
Russia	5,500	3,450	5,000	4,300	5,000	5,000
Turkey	210	210	210	210	210	210
Ukraine	725	475	500	600	475	475
Others	498	525	508	469	469	469
Subtotal	20,742	18,233	19,583	19,174	19,501	19,626
United States	3,011	2,789	2,549	2,781	2,537	2,536
World Total	23,753	21,022	22,132	21,955	22,038	22,162
Ending Stocks						
Australia	126	146	146	144	296	294
Canada	1,162	733	810	360	530	530
China	126	84	127	152	157	157
European Union	1,230	832	905	914	902	867
Norway	20	35	62	57	62	62
Russia	397	167	485	202	192	192
Ukraine	59	40	52	77	47	47
Others	232	227	221	255	264	234
Subtotal	3,352	2,264	2,808	2,161	2,450	2,383
United States	1,166	982	798	527	621	665
World Total	4,518	3,246	3,606	2,688	3,071	3,048

Regional Oats Imports, Production, Consumption, and Stocks

Thousand Metric Tons

	2009/10	2010/11	2011/12	2012/13	Jun 2013/14	Jul 2013/14
TY Imports						
North America	1,674	1,589	1,874	1,620	1,720	1,720
South America	19	24	32	25	25	25
European Union	2	4	3	5	5	5
Other Europe	92	71	110	70	80	80
Former Soviet Union - 12	0	6	7	0	0	0
Middle East	0	4	4	5	5	5
North Africa	1	0	9	10	10	10
Sub-Saharan Africa	21	15	11	25	25	25
East Asia	113	122	122	110	110	110
Oceania	0	0	0	0	0	0
Total	1,922	1,835	2,172	1,870	1,980	1,980
Production						
North America	4,393	3,740	4,052	3,724	4,275	4,296
South America	857	1,644	1,245	1,481	1,418	1,418
European Union	8,641	7,500	7,908	7,909	8,016	8,098
Other Europe	473	480	422	382	382	382
Former Soviet Union - 12	6,893	4,257	6,549	5,463	6,106	6,106
Middle East	218	204	210	210	210	210
North Africa	121	177	156	155	155	155
Sub-Saharan Africa	45	45	45	45	45	45
East Asia	582	527	602	602	582	582
Oceania	1,196	1,176	1,303	1,066	1,230	1,230
Total	23,419	19,750	22,492	21,037	22,419	22,522
Domestic Consumption						
North America	4,993	4,504	4,150	4,546	4,002	4,001
South America	857	1,563	1,143	1,390	1,338	1,363
European Union	8,157	7,793	7,672	7,755	7,900	8,000
Other Europe	577	537	496	460	455	455
Former Soviet Union - 12	7,015	4,535	6,180	5,706	6,131	6,131
Middle East	210	210	210	210	210	210
North Africa	121	178	164	165	165	165
Sub-Saharan Africa	65	65	65	70	70	70
East Asia	680	685	685	690	680	680
Oceania	1,009	948	1,129	918	930	930
Total	23,684	21,018	21,894	21,910	21,881	22,005
Ending Stocks						
North America	2,335	1,720	1,615	894	1,158	1,202
South America	95	125	96	136	136	106
European Union	1,230	832	905	914	902	867
Other Europe	49	65	94	86	93	93
Former Soviet Union - 12	517	235	592	329	284	284
Middle East	10	8	12	17	22	22
North Africa	1	1	2	2	2	2
Sub-Saharan Africa	24	19	10	10	10	10
East Asia	131	95	134	156	168	168
Oceania	126	146	146	144	296	294
Total	4,518	3,246	3,606	2,688	3,071	3,048

NOTES: Regional definitions appear on last page of this circular. Imports are reported on a trade year basis. All other data are reported using local marketing years.

World Rye Trade
October/September Year, Thousand Metric Tons

	2009/10	2010/11	2011/12	2012/13	2013/14 Jun	2013/14 Jul
TY Exports						
Belarus	25	150	25	100	100	100
Canada	142	221	159	175	150	150
European Union	134	71	59	100	100	100
Russia	9	22	284	125	100	100
Ukraine	93	2	9	45	25	25
Others	0	3	4	0	0	0
Subtotal	403	469	540	545	475	475
United States	4	3	8	5	5	5
World Total	407	472	548	550	480	480
TY Imports						
Albania	0	0	0	0	0	0
European Union	4	36	302	100	100	100
Israel	9	19	11	25	15	15
Japan	103	101	46	50	75	75
Korea, South	7	11	11	10	10	10
Norway	14	12	11	10	10	10
Switzerland	6	2	2	5	5	5
Others	2	150	8	0	0	0
Subtotal	145	331	391	200	215	215
Unaccounted	133	-7	-17	175	90	90
United States	129	148	174	175	175	175
World Total	407	472	548	550	480	480

TY=Trade Year, see Endnotes.

World Rye Production, Consumption, and Stocks
Local Marketing Years, Thousand Metric Tons

	2009/10	2010/11	2011/12	2012/13	2013/14 Jun	2013/14 Jul
Production						
Belarus	1,227	735	804	1,600	1,500	1,500
Canada	281	237	241	340	200	200
European Union	9,955	7,576	6,900	8,718	8,694	8,697
Kazakhstan	75	42	28	50	50	50
Russia	4,333	1,642	2,967	2,132	3,500	3,500
Turkey	343	366	350	350	350	350
Ukraine	954	464	579	676	650	650
Others	177	159	155	150	130	130
Subtotal	17,345	11,221	12,024	14,016	15,074	15,077
United States	178	189	161	176	181	223
World Total	17,523	11,410	12,185	14,192	15,255	15,300
Total Consumption						
Argentina	55	40	45	40	40	40
Belarus	1,300	650	700	1,400	1,400	1,400
Canada	131	136	102	130	75	75
European Union	9,555	8,204	7,404	8,800	8,600	8,600
Japan	90	105	55	45	75	75
Kazakhstan	75	40	30	50	50	50
Norway	40	45	27	26	26	26
Russia	4,325	1,850	2,850	2,000	3,200	3,200
Turkey	340	350	350	350	350	350
Ukraine	800	650	625	625	650	650
Others	117	114	117	144	104	104
Subtotal	16,898	12,218	12,279	13,751	14,657	14,657
United States	273	330	318	397	355	388
World Total	17,171	12,548	12,597	14,148	15,012	15,045
Ending Stocks						
Belarus	144	79	163	263	263	263
Canada	139	51	24	59	34	34
European Union	1,728	1,013	741	659	765	756
Japan	18	14	5	10	10	10
Russia	308	250	129	111	311	311
Turkey	17	33	34	33	33	33
Ukraine	411	189	132	138	143	113
Others	6	8	6	6	6	6
Subtotal	2,771	1,637	1,234	1,279	1,565	1,526
United States	24	20	11	10	19	18
World Total	2,795	1,657	1,245	1,289	1,584	1,544

Regional Rye Imports, Production, Consumption, and Stocks

Thousand Metric Tons

	2009/10	2010/11	2011/12	2012/13	Jun 2013/14	Jul 2013/14
TY Imports						
North America	129	148	174	175	175	175
South America	0	0	0	0	0	0
European Union	4	36	302	100	100	100
Other Europe	20	14	13	15	15	15
Former Soviet Union - 12	2	150	5	0	0	0
Middle East	9	19	14	25	15	15
Sub-Saharan Africa	0	0	0	0	0	0
East Asia	110	112	57	60	85	85
Oceania	0	0	0	0	0	0
Total	274	479	565	375	390	390
Production						
North America	459	426	402	516	381	423
South America	61	45	50	45	45	45
European Union	9,955	7,576	6,900	8,718	8,694	8,697
Other Europe	79	78	62	62	62	62
Former Soviet Union - 12	6,589	2,883	4,378	4,458	5,700	5,700
Middle East	343	366	350	350	350	350
Sub-Saharan Africa	3	3	3	3	3	3
East Asia	0	0	0	0	0	0
Oceania	34	33	40	40	20	20
Total	17,523	11,410	12,185	14,192	15,255	15,300
Domestic Consumption						
North America	404	466	420	527	430	463
South America	61	45	50	45	45	45
European Union	9,555	8,204	7,404	8,800	8,600	8,600
Other Europe	98	91	75	77	77	77
Former Soviet Union - 12	6,500	3,190	4,205	4,075	5,300	5,300
Middle East	349	369	361	385	365	365
Sub-Saharan Africa	3	3	2	3	3	3
East Asia	97	116	66	55	85	85
Oceania	34	30	40	40	20	20
Total	17,101	12,514	12,623	14,007	14,925	14,958
Ending Stocks						
North America	163	71	35	69	53	52
South America	0	0	0	0	0	0
European Union	1,728	1,013	741	659	765	756
Other Europe	0	0	0	0	0	0
Former Soviet Union - 12	869	526	430	518	723	693
Middle East	17	33	34	33	33	33
Sub-Saharan Africa	0	0	0	0	0	0
East Asia	18	14	5	10	10	10
Oceania	0	0	0	0	0	0
Total	2,795	1,657	1,245	1,289	1,584	1,544

NOTES: Regional definitions appear on last page of this circular. Imports are reported on a trade year basis. All other data are reported using local marketing years.



HISTORICAL DATA SERIES FOR SELECTED REGIONS AND COUNTRIES

CONTENTS

European Union: Grain Supply and Demand	36
China: Grain Supply and Demand	37
Other Europe: Grain Supply and Demand	38
Former Soviet Union: Grain Supply and Demand.....	39
Wheat Supply and Disappearance: Selected Exporters	43
Corn Supply and Disappearance: Selected Exporters.....	45
Barley Supply and Disappearance: Selected Exporters	47
Sorghum Supply and Disappearance: Selected Exporters.....	48
U.S. Grains: Supply and Distribution.....	49
Total Wheat and Coarse Grains: Supply and Demand	50
World Wheat and Coarse Grains: Supply and Demand	51
World Corn and Barley: Supply and Demand	52
World Rice: Supply and Demand	53

European Union: Grain Supply and Demand

Wheat and Coarse Grains Millions of Metric Tons/Hectares

	Area Harvested	Yield	Production	Imports	Exports	Feed Dom. Consumpti	Domestic Consumpti	Ending Stocks
Wheat								
2002/03	26.6	5.0	133.5	10.6	18.2	60.0	125.7	18.8
2003/04	24.5	4.5	111.4	7.4	9.9	52.5	115.8	12.0
2004/05	26.2	5.6	147.7	7.1	14.7	59.3	123.9	28.3
2005/06	26.0	5.1	132.9	6.8	15.7	63.0	128.2	24.0
2006/07	24.7	5.1	125.7	5.2	13.9	60.2	126.2	14.8
2007/08	24.9	4.9	120.8	6.8	12.4	52.4	117.2	12.8
2008/09	26.8	5.7	151.9	7.7	25.4	60.5	127.6	19.4
2009/10	26.0	5.4	139.7	5.4	22.3	57.5	125.6	16.6
2010/11	26.0	5.3	136.7	4.6	23.1	52.5	122.8	11.9
2011/12	25.8	5.3	138.1	7.4	16.7	57.0	126.9	13.8
2012/13	25.8	5.2	133.1	5.7	22.0	51.0	121.0	9.6
2013/14	26.0	5.3	138.6	5.5	20.0	52.5	122.0	11.7
Coarse Grains								
2002/03	33.3	4.5	151.1	4.2	7.6	111.8	147.5	23.1
2003/04	33.2	4.0	134.1	8.2	4.0	111.9	147.7	13.6
2004/05	33.9	5.0	169.1	3.0	4.8	118.9	155.2	25.6
2005/06	33.2	4.5	149.5	2.7	4.3	112.4	150.7	22.7
2006/07	32.4	4.3	140.0	8.1	4.5	112.9	150.6	15.6
2007/08	32.6	4.3	138.7	20.3	4.5	121.6	157.1	13.1
2008/09	34.0	4.8	164.9	3.1	5.7	116.1	154.2	21.3
2009/10	32.9	4.8	157.5	2.9	3.0	114.8	152.4	26.2
2010/11	30.2	4.7	142.8	8.5	6.2	116.9	154.7	16.7
2011/12	30.2	5.0	150.0	6.9	6.5	113.4	151.1	16.1
2012/13	31.3	4.6	145.3	11.1	6.5	115.0	153.6	12.3
2013/14	31.5	4.9	154.2	7.4	6.8	115.1	154.6	12.6
Wheat and Coarse Grains								
2002/03	59.9	4.8	284.6	14.7	25.8	171.9	273.2	41.9
2003/04	57.7	4.3	245.5	15.6	13.9	164.4	263.5	25.6
2004/05	60.1	5.3	316.8	10.0	19.5	178.2	279.1	53.9
2005/06	59.1	4.8	282.3	9.4	20.0	175.4	278.9	46.8
2006/07	57.0	4.7	265.7	13.2	18.5	173.1	276.8	30.4
2007/08	57.5	4.5	259.5	27.1	16.9	174.1	274.2	25.9
2008/09	60.9	5.2	316.8	10.8	31.1	176.6	281.8	40.7
2009/10	58.9	5.0	297.3	8.2	25.3	172.3	278.0	42.8
2010/11	56.2	5.0	279.5	13.1	29.3	169.4	277.5	28.7
2011/12	56.0	5.1	288.1	14.3	23.2	170.4	277.9	29.9
2012/13	57.1	4.9	278.4	16.8	28.5	166.0	274.6	22.0
2013/14	57.5	5.1	292.8	12.9	26.8	167.6	276.6	24.3

China: Grain Supply and Demand

Wheat and Coarse Grains Millions of Metric Tons/Hectares

	Area Harvested	Yield	Production	Imports	Exports	Feed Dom. Consumpti	Domestic Consumpti	Ending Stocks
Wheat								
2002/03	23.9	3.8	90.3	0.4	1.7	6.5	105.2	60.4
2003/04	22.0	3.9	86.5	3.7	2.8	6.0	104.5	43.3
2004/05	21.6	4.3	92.0	6.7	1.2	4.0	102.0	38.8
2005/06	22.8	4.3	97.4	1.1	1.4	3.5	101.5	34.5
2006/07	23.6	4.6	108.5	0.4	2.8	4.0	102.0	38.6
2007/08	23.7	4.6	109.3	0.0	2.8	8.0	106.0	39.1
2008/09	23.6	4.8	112.5	0.5	0.7	8.0	105.5	45.8
2009/10	24.3	4.7	115.1	1.4	0.9	10.0	107.0	54.4
2010/11	24.3	4.7	115.2	0.9	0.9	13.0	110.5	59.1
2011/12	24.3	4.8	117.4	2.9	1.0	24.0	122.5	55.9
2012/13	24.2	5.0	121.0	3.2	1.0	25.0	125.0	54.1
2013/14	24.3	5.0	121.0	8.5	1.0	25.0	125.5	57.1
Coarse Grains								
2002/03	27.8	4.7	130.6	1.8	15.3	98.4	136.3	66.5
2003/04	26.8	4.6	124.0	1.5	7.7	99.1	138.3	45.9
2004/05	28.0	4.9	138.3	2.1	7.6	100.3	141.1	37.6
2005/06	28.8	5.1	147.8	2.3	3.8	103.5	147.1	36.8
2006/07	30.9	5.1	159.1	1.2	5.5	104.9	153.6	38.0
2007/08	31.9	5.0	159.2	1.2	0.9	106.7	157.9	39.5
2008/09	32.2	5.4	172.4	1.7	0.2	109.1	161.2	52.2
2009/10	33.4	5.1	169.8	3.8	0.2	119.1	173.3	52.3
2010/11	34.6	5.3	183.8	2.7	0.2	128.8	188.4	50.1
2011/12	35.6	5.6	199.3	7.9	0.1	132.4	197.0	60.2
2012/13	37.1	5.7	212.4	5.5	0.1	145.4	216.1	61.9
2013/14	37.7	5.8	217.5	9.5	0.1	157.4	233.1	55.6
Wheat and Coarse Grains								
2002/03	51.7	4.3	220.9	2.2	17.1	104.9	241.5	126.8
2003/04	48.8	4.3	210.5	5.3	10.5	105.1	242.8	89.2
2004/05	49.6	4.6	230.2	8.8	8.8	104.3	243.1	76.4
2005/06	51.6	4.7	245.2	3.4	5.2	107.0	248.6	71.3
2006/07	54.5	4.9	267.6	1.5	8.2	108.9	255.6	76.6
2007/08	55.6	4.8	268.5	1.2	3.7	114.7	263.9	78.6
2008/09	55.8	5.1	284.9	2.1	0.9	117.1	266.7	98.0
2009/10	57.6	4.9	284.9	5.2	1.1	129.1	280.3	106.7
2010/11	58.9	5.1	299.0	3.6	1.1	141.8	298.9	109.2
2011/12	59.9	5.3	316.7	10.9	1.1	156.4	319.5	116.2
2012/13	61.3	5.4	333.4	8.7	1.1	170.4	341.1	116.0
2013/14	61.9	5.5	338.5	18.0	1.1	182.4	358.6	112.7

Other Europe: Grain Supply and Demand

Wheat and Coarse Grains Millions of Metric Tons/Hectares

	Area Harvested	Yield	Production	Imports	Exports	Feed Dom. Consumpti	Domestic Consumpti	Ending Stocks
Wheat								
2002/03	1.2	3.3	3.9	1.4	0.4	0.8	4.9	1.1
2003/04	1.0	2.8	2.9	1.4	0.0	0.5	4.6	0.8
2004/05	1.1	4.1	4.6	1.4	0.3	0.8	5.2	1.3
2005/06	1.0	3.8	3.7	1.4	0.2	0.8	5.1	1.2
2006/07	1.0	3.6	3.6	1.5	0.3	0.7	4.6	1.2
2007/08	1.0	3.7	3.6	1.9	0.5	0.8	4.8	1.5
2008/09	0.9	4.2	3.9	1.7	0.4	1.0	5.0	1.7
2009/10	1.0	3.7	3.7	1.7	0.5	0.9	4.9	1.7
2010/11	0.9	3.6	3.2	1.6	0.6	0.8	4.7	1.2
2011/12	0.9	4.0	3.6	1.9	0.5	0.9	4.9	1.3
2012/13	0.9	3.9	3.5	1.7	0.7	0.9	4.7	1.1
2013/14	1.0	4.0	4.0	1.8	0.8	1.0	5.0	1.1
Coarse Grains								
2002/03	2.2	4.1	9.1	0.6	0.4	7.5	8.9	1.4
2003/04	2.2	3.1	6.7	0.7	0.1	7.0	8.1	0.7
2004/05	2.1	4.8	10.4	0.5	0.6	8.3	9.5	1.4
2005/06	2.1	4.6	9.9	0.6	1.3	8.3	9.5	1.2
2006/07	2.1	4.5	9.5	0.8	0.9	8.3	9.4	1.3
2007/08	2.1	3.4	7.2	0.9	0.1	6.9	8.0	1.1
2008/09	2.1	4.5	9.6	0.6	1.5	7.4	8.6	1.2
2009/10	2.0	4.6	9.4	0.7	1.4	7.2	8.5	1.4
2010/11	2.1	4.8	9.8	0.8	2.0	7.1	8.5	1.4
2011/12	2.1	4.5	9.4	0.8	2.4	6.9	8.2	1.0
2012/13	2.1	3.0	6.3	0.8	0.5	5.5	6.7	0.9
2013/14	2.1	4.9	10.0	0.9	2.0	7.0	8.4	1.3
Wheat and Coarse Grains								
2002/03	3.4	3.9	13.0	1.9	0.8	8.4	13.8	2.6
2003/04	3.2	3.0	9.6	2.0	0.1	7.6	12.7	1.4
2004/05	3.3	4.6	15.0	1.9	0.9	9.2	14.7	2.7
2005/06	3.1	4.4	13.7	2.0	1.4	9.1	14.6	2.4
2006/07	3.1	4.2	13.0	2.3	1.2	8.9	14.0	2.5
2007/08	3.1	3.5	10.8	2.7	0.6	7.8	12.8	2.6
2008/09	3.1	4.4	13.5	2.3	1.9	8.4	13.6	2.8
2009/10	3.0	4.3	13.1	2.4	1.9	8.1	13.4	3.0
2010/11	2.9	4.4	13.0	2.4	2.6	7.9	13.2	2.6
2011/12	3.0	4.4	13.0	2.7	2.9	7.9	13.1	2.3
2012/13	3.0	3.3	9.8	2.6	1.2	6.4	11.4	2.0
2013/14	3.1	4.6	14.0	2.7	2.8	8.0	13.4	2.4

Former Soviet Union: Grain Supply and Demand

Wheat and Coarse Grains Millions of Metric Tons/Hectares

	Area Harvested	Yield	Production	Imports	Exports	Feed Dom. Consumpti	Domestic Consumpti	Ending Stocks
Wheat								
2007/08	46.3	2.0	92.4	6.0	21.7	24.2	75.7	14.1
2008/09	50.6	2.3	115.5	6.6	38.2	24.5	76.1	22.0
2009/10	52.6	2.2	114.0	5.4	37.3	26.1	78.2	26.0
2010/11	45.8	1.8	81.1	5.5	13.9	23.8	75.0	23.7
2011/12	49.8	2.3	115.0	8.0	39.8	27.9	79.8	27.1
2012/13	43.9	1.8	77.2	7.2	25.7	20.7	71.7	14.1
2013/14	47.6	2.1	102.3	6.7	32.7	23.9	74.9	15.5
Coarse Grains								
2007/08	27.5	2.0	54.3	1.0	5.3	35.1	50.6	4.8
2008/09	30.3	2.6	79.2	0.7	17.2	41.5	58.1	9.4
2009/10	27.2	2.5	67.7	0.4	15.0	39.1	55.0	7.4
2010/11	21.9	2.2	47.6	1.2	8.8	28.5	41.9	5.5
2011/12	27.1	2.9	78.7	1.0	24.6	38.6	54.3	6.3
2012/13	27.7	2.5	69.0	0.8	21.0	35.4	50.3	4.8
2013/14	29.6	2.8	82.6	0.8	26.0	38.6	55.6	6.5

Former Soviet Union: Grain Supply and Demand (Wheat)

Millions of Tons/Hectares

Country Mktg Year	Area Harvested	Yield	Production	MY Imports	MY Exports	Feed and Residual	Total Consumpti	Ending Stocks
Former Soviet Union - 12								
Kazakhstan								
2010/11	13.1	0.7	9.6	0.0	4.9	1.9	6.2	2.9
2011/12	13.7	1.7	22.7	0.0	11.8	2.6	7.4	6.4
2012/13	12.4	0.8	9.8	0.0	6.5	2.0	6.8	2.9
2013/14	12.5	1.2	14.5	0.0	7.0	2.4	7.2	3.2
Russia								
2010/11	21.8	1.9	41.5	0.1	4.0	16.0	38.6	13.7
2011/12	24.8	2.3	56.2	0.6	21.6	15.5	38.0	10.9
2012/13	21.3	1.8	37.7	1.4	11.2	11.9	33.6	5.3
2013/14	24.0	2.3	54.0	0.5	17.0	14.5	36.5	6.3
Ukraine								
2010/11	6.3	2.7	16.8	0.0	4.3	2.8	11.6	3.3
2011/12	6.7	3.4	22.3	0.1	5.4	6.1	15.0	5.4
2012/13	5.6	2.8	15.8	0.1	7.2	3.3	11.8	2.2
2013/14	6.5	3.0	19.5	0.1	8.0	3.5	11.5	2.3
Uzbekistan								
2010/11	1.4	4.6	6.5	1.6	0.5	1.5	7.7	0.8
2011/12	1.4	4.5	6.3	2.7	0.7	1.7	8.0	1.1
2012/13	1.4	4.8	6.7	1.7	0.5	1.6	8.0	1.1
2013/14	1.4	4.8	6.7	1.7	0.5	1.5	8.0	1.0
Other Former Soviet Union - 12								
2010/11	3.2	2.1	6.6	3.7	0.2	1.6	10.9	2.9
2011/12	3.2	2.3	7.4	4.7	0.2	2.0	11.4	3.4
2012/13	3.1	2.3	7.2	4.0	0.3	1.9	11.6	2.7
2013/14	3.2	2.4	7.6	4.4	0.2	2.0	11.8	2.6
Total Former Soviet Union - 12								
2010/11	45.8	1.8	81.1	5.5	13.9	23.8	75.0	23.7
2011/12	49.8	2.3	115.0	8.0	39.8	27.9	79.8	27.1
2012/13	43.9	1.8	77.2	7.2	25.7	20.7	71.7	14.1
2013/14	47.6	2.1	102.3	6.7	32.7	23.9	74.9	15.5

Former Soviet Union: Grain Supply and Demand (Barley)

Millions of Tons/Hectares

Country Mktg Year	Area Harvested	Yield	Production	MY Imports	MY Exports	Feed and Residual	Total Consumpti	Ending Stocks
Former Soviet Union - 12								
Kazakhstan								
2010/11	1.3	1.0	1.3	0.1	0.2	1.2	1.5	0.1
2011/12	1.5	1.7	2.6	0.0	0.7	1.5	1.8	0.2
2012/13	1.6	0.9	1.5	0.0	0.2	1.2	1.4	0.1
2013/14	1.8	1.2	2.2	0.0	0.5	1.4	1.7	0.2
Russia								
2010/11	5.0	1.7	8.4	0.4	0.3	5.5	9.5	1.4
2011/12	7.7	2.2	16.9	0.4	3.5	9.8	14.3	0.8
2012/13	7.6	1.8	14.0	0.3	2.3	7.7	12.1	0.7
2013/14	8.2	2.1	17.5	0.3	3.8	8.5	13.3	1.3
Ukraine								
2010/11	4.3	2.0	8.5	0.0	2.8	4.4	6.0	0.8
2011/12	3.7	2.5	9.1	0.0	2.5	4.7	6.3	1.2
2012/13	3.3	2.1	6.9	0.0	2.2	3.4	5.0	0.9
2013/14	3.3	2.1	7.0	0.0	2.0	3.4	5.1	0.9
Uzbekistan								
2010/11	0.1	3.2	0.2	0.0	0.0	0.2	0.3	0.0
2011/12	0.1	3.2	0.2	0.1	0.0	0.3	0.3	0.0
2012/13	0.1	3.2	0.2	0.1	0.0	0.2	0.3	0.0
2013/14	0.1	3.2	0.2	0.0	0.0	0.2	0.3	0.0
Other Former Soviet Union - 12								
2010/11	1.4	2.4	3.3	0.1	0.0	2.6	3.4	0.5
2011/12	1.4	2.5	3.4	0.2	0.0	2.7	3.6	0.5
2012/13	1.3	2.5	3.4	0.1	0.0	2.7	3.5	0.5
2013/14	1.2	2.5	3.0	0.2	0.0	2.5	3.3	0.4
Total Former Soviet Union - 12								
2010/11	12.1	1.8	21.7	0.7	3.3	13.9	20.7	2.8
2011/12	14.3	2.3	32.2	0.7	6.7	19.0	26.3	2.7
2012/13	13.9	1.9	26.0	0.5	4.7	15.2	22.3	2.2
2013/14	14.6	2.1	30.0	0.5	6.3	15.9	23.6	2.8

Former Soviet Union: Grain Supply and Demand (Corn)

Millions of Tons/Hectares

Country Mktg Year	Area Harvested	Yield	Production	MY Imports	MY Exports	Feed and Residual	Total Consumpti	Ending Stocks
Former Soviet Union - 12								
Kazakhstan								
2010/11	0.1	4.8	0.5	0.0	0.0	0.4	0.5	0.1
2011/12	0.1	5.0	0.5	0.0	0.0	0.4	0.5	0.0
2012/13	0.1	5.0	0.5	0.0	0.0	0.4	0.5	0.0
2013/14	0.1	5.0	0.5	0.0	0.0	0.4	0.5	0.0
Russia								
2010/11	1.0	3.0	3.1	0.1	0.0	2.8	3.2	0.1
2011/12	1.6	4.3	7.0	0.0	2.0	3.9	4.6	0.5
2012/13	1.9	4.2	8.2	0.1	2.0	5.5	6.3	0.4
2013/14	2.2	4.4	9.5	0.1	2.5	6.1	7.0	0.5
Ukraine								
2010/11	2.6	4.5	11.9	0.0	5.0	5.4	6.5	1.1
2011/12	3.5	6.4	22.8	0.0	15.2	6.5	7.8	1.1
2012/13	4.4	4.8	20.9	0.1	13.5	6.4	7.7	0.8
2013/14	4.7	5.5	26.0	0.1	16.5	7.0	8.6	1.8
Uzbekistan								
2010/11	0.0	4.6	0.2	0.0	0.0	0.2	0.2	0.0
2011/12	0.0	4.6	0.2	0.0	0.0	0.2	0.2	0.0
2012/13	0.0	3.4	0.1	0.0	0.0	0.1	0.1	0.0
2013/14	0.0	3.4	0.1	0.0	0.0	0.1	0.1	0.0
Other Former Soviet Union - 12								
2010/11	0.8	3.6	2.8	0.2	0.2	2.6	2.9	0.6
2011/12	0.9	4.0	3.7	0.2	0.3	2.9	3.3	1.0
2012/13	0.8	3.4	2.6	0.2	0.4	2.7	3.0	0.4
2013/14	0.9	3.9	3.6	0.2	0.3	3.1	3.5	0.5
Total Former Soviet Union - 12								
2010/11	4.6	4.0	18.4	0.3	5.2	11.3	13.2	1.9
2011/12	6.2	5.5	34.1	0.3	17.5	13.9	16.3	2.5
2012/13	7.2	4.5	32.4	0.3	15.9	15.1	17.6	1.7
2013/14	7.9	5.0	39.8	0.3	19.3	16.7	19.7	2.8

Wheat Supply and Disappearance: Selected Exporters
Million Metric Tons/Hectares

Country Mktg Year	Area Harvested	Yield	Production	MY Imports	MY Exports	Feed and Residual	Total Consumpti	Ending Stocks
Wheat Competitors								
Argentina								
2005/06	5.5	2.5	13.8	0.0	9.6	0.0	5.1	0.4
2006/07	6.2	2.6	16.3	0.0	10.7	0.1	5.4	0.6
2007/08	6.6	2.8	18.6	0.0	11.2	0.1	5.7	2.4
2008/09	5.3	2.1	11.0	0.0	6.8	0.0	5.3	1.3
2009/10	4.0	3.0	12.0	0.0	5.1	0.0	5.8	2.4
2010/11	4.8	3.6	17.2	0.0	9.5	0.1	6.0	4.2
2011/12	5.2	3.0	15.5	0.0	12.9	0.1	6.0	0.8
2012/13	3.5	2.9	10.0	0.0	4.0	0.1	6.0	0.8
2013/14	4.2	3.1	13.0	0.0	7.0	0.1	6.1	0.8
Australia								
2005/06	12.5	2.0	25.2	0.1	16.0	3.7	6.6	9.4
2006/07	11.8	0.9	10.8	0.1	8.7	4.5	7.4	4.2
2007/08	12.6	1.1	13.6	0.1	7.5	3.5	6.6	3.7
2008/09	13.5	1.6	21.4	0.1	14.7	4.2	7.4	3.1
2009/10	13.9	1.6	21.8	0.1	14.8	1.9	5.2	5.1
2010/11	13.5	2.0	27.4	0.1	18.6	2.5	5.8	8.2
2011/12	14.0	2.1	29.9	0.1	24.7	3.2	6.5	7.1
2012/13	13.2	1.7	22.1	0.1	19.0	3.5	6.8	3.4
2013/14	13.7	1.9	25.5	0.1	19.0	3.7	7.1	3.0
Canada								
2005/06	9.4	2.7	25.7	0.3	16.0	3.8	8.2	9.7
2006/07	9.7	2.6	25.3	0.3	19.4	4.5	9.0	6.9
2007/08	8.6	2.3	20.1	0.4	16.1	2.2	6.9	4.4
2008/09	10.0	2.9	28.6	0.4	18.9	3.1	7.8	6.6
2009/10	9.7	2.8	27.0	0.4	19.0	2.5	7.2	7.7
2010/11	8.3	2.8	23.3	0.4	16.6	2.7	7.6	7.4
2011/12	8.6	3.0	25.3	0.5	17.4	4.7	9.9	5.9
2012/13	9.5	2.9	27.2	0.5	18.8	4.7	9.9	4.9
2013/14	10.3	2.8	29.0	0.5	19.5	4.5	9.7	5.2
Total Wheat Competitors								
2005/06	27.3	2.4	64.7	0.4	41.7	7.5	19.9	19.4
2006/07	27.7	1.9	52.4	0.4	38.9	9.1	21.7	11.6
2007/08	27.8	1.9	52.3	0.5	34.8	5.8	19.1	10.5
2008/09	28.8	2.1	61.0	0.5	40.4	7.3	20.6	11.0

Wheat Supply and Disappearance: Selected Exporters (Continued)

Million Metric Tons/Hectares

Country Mktg Year	Area Harvested	Yield	Production	MY Imports	MY Exports	Feed and Residual	Total Consumpti	Ending Stocks
2009/10	27.5	2.2	60.8	0.5	38.9	4.4	18.2	15.2
2010/11	26.6	2.5	67.9	0.6	44.7	5.3	19.3	19.7
2011/12	27.7	2.6	70.7	0.6	54.9	8.0	22.3	13.8
2012/13	26.2	2.3	59.3	0.6	41.8	8.3	22.7	9.1
2013/14	28.2	2.4	67.5	0.6	45.5	8.3	22.8	9.0
India								
2005/06	26.5	2.6	68.6	0.0	0.8	2.2	70.0	2.0
2006/07	26.4	2.6	69.4	6.7	0.1	2.3	73.5	4.5
2007/08	28.0	2.7	75.8	2.0	0.0	2.5	76.4	5.8
2008/09	28.2	2.8	78.6	0.0	0.0	2.5	70.9	13.4
2009/10	27.8	2.9	80.7	0.2	0.1	2.8	78.2	16.1
2010/11	28.5	2.8	80.8	0.3	0.1	2.9	81.8	15.4
2011/12	29.1	3.0	86.9	0.0	0.9	3.1	81.4	20.0
2012/13	29.9	3.2	94.9	0.0	6.8	3.4	83.8	24.2
2013/14	29.4	3.1	92.0	0.0	7.0	3.5	89.0	20.2
Turkey								
2005/06	8.6	2.2	18.5	0.1	3.2	0.4	16.1	1.1
2006/07	8.6	2.0	17.5	1.7	2.4	0.8	16.7	1.3
2007/08	7.7	2.0	15.5	2.2	1.7	0.8	16.8	0.4
2008/09	7.7	2.2	16.8	3.5	2.2	0.7	16.9	1.5
2009/10	7.8	2.4	18.5	3.2	4.3	0.8	17.1	1.8
2010/11	8.0	2.1	17.0	3.7	3.0	0.8	17.3	2.2
2011/12	7.7	2.4	18.8	3.8	3.7	1.4	18.1	3.1
2012/13	7.8	2.0	15.5	3.7	3.3	0.7	17.5	1.5
2013/14	7.7	2.3	17.6	3.2	3.2	0.8	17.6	1.5

Corn Supply and Disappearance: Selected Exporters
Million Metric Tons/Hectares

Country Mktg Year	Area Harvested	Yield	Production	MY Imports	MY Exports	Feed and Residual	Total Consumpti	Ending Stocks
Argentina								
2005/06	2.4	6.5	15.8	0.0	9.5	4.4	6.2	1.3
2006/07	2.8	8.0	22.5	0.0	15.3	4.8	6.7	1.8
2007/08	3.4	6.5	22.0	0.0	14.8	4.9	6.8	2.2
2008/09	2.5	6.2	15.5	0.0	10.3	4.5	6.4	1.0
2009/10	3.0	8.3	25.0	0.0	16.5	5.0	6.9	2.6
2010/11	3.8	6.7	25.2	0.0	16.3	5.3	7.3	4.1
2011/12	3.6	5.8	21.0	0.0	17.1	4.8	7.0	1.0
2012/13	4.0	6.6	26.5	0.0	19.0	5.0	7.6	0.9
2013/14	3.5	7.7	27.0	0.0	18.5	5.3	8.3	1.1
Brazil								
2005/06	12.9	3.2	41.7	1.1	4.5	33.0	39.5	3.0
2006/07	14.0	3.6	51.0	1.4	10.8	34.5	41.0	3.6
2007/08	14.7	4.0	58.6	0.7	7.8	36.0	42.5	12.6
2008/09	14.1	3.6	51.0	1.1	7.1	38.5	45.5	12.1
2009/10	12.9	4.3	56.1	0.4	11.6	40.0	47.0	10.0
2010/11	13.8	4.2	57.4	0.8	8.4	42.5	49.5	10.3
2011/12	15.2	4.8	73.0	0.8	24.3	43.0	50.5	9.2
2012/13	15.8	4.9	77.0	0.8	22.0	45.0	53.0	12.0
2013/14	15.5	4.6	72.0	0.8	18.0	46.0	54.0	12.8
China								
2005/06	26.4	5.3	139.4	0.1	3.7	101.0	137.0	35.3
2006/07	28.5	5.3	151.6	0.0	5.3	104.0	145.0	36.6
2007/08	29.5	5.2	152.3	0.0	0.5	106.0	150.0	38.4
2008/09	29.9	5.6	165.9	0.0	0.2	108.0	153.0	51.2
2009/10	31.2	5.3	164.0	1.3	0.2	118.0	165.0	51.3
2010/11	32.5	5.5	177.2	1.0	0.1	128.0	180.0	49.4
2011/12	33.5	5.7	192.8	5.2	0.1	131.0	188.0	59.3
2012/13	35.0	5.9	205.6	3.0	0.1	144.0	207.0	60.9
2013/14	35.6	5.9	211.0	7.0	0.1	156.0	224.0	54.8
South Africa								
2005/06	2.0	3.4	6.9	0.9	0.5	4.0	8.2	2.3
2006/07	2.9	2.5	7.3	1.1	0.5	4.4	8.6	1.7
2007/08	3.3	4.0	13.2	0.0	2.2	4.3	9.6	3.1
2008/09	2.9	4.3	12.6	0.0	1.7	4.3	9.9	4.1
2009/10	3.3	4.1	13.4	0.0	2.1	4.6	10.3	5.2
2010/11	2.9	3.8	10.9	0.4	2.4	5.0	10.7	3.4

Corn Supply and Disappearance: Selected Exporters (Continued)

Million Metric Tons/Hectares

Country Mktg Year	Area Harvested	Yield	Production	MY Imports	MY Exports	Feed and Residual	Total Consumpti	Ending Stocks
2011/12	3.1	4.1	12.8	0.0	1.8	5.0	10.7	3.7
2012/13	3.3	3.8	12.2	0.0	1.9	5.0	10.8	3.2
2013/14	3.2	4.1	13.0	0.0	2.0	5.1	11.0	3.2
Total Corn Competitors								
2005/06	43.7	4.7	203.8	2.1	18.3	142.4	190.9	41.8
2006/07	48.2	4.8	232.4	2.6	31.9	147.7	201.3	43.6
2007/08	50.9	4.8	246.1	0.8	25.3	151.2	208.9	56.3
2008/09	49.4	5.0	245.0	1.2	19.3	155.3	214.8	68.4
2009/10	50.4	5.1	258.5	1.7	30.3	167.6	229.2	69.0
2010/11	52.9	5.1	270.8	2.2	27.3	180.8	247.5	67.2
2011/12	55.5	5.4	299.5	6.0	43.4	183.8	256.2	73.2
2012/13	58.0	5.5	321.3	3.8	43.0	199.0	278.4	77.0
2013/14	57.8	5.6	323.0	7.8	38.6	212.4	297.3	72.0

Barley Supply and Disappearance: Selected Exporters
Million Metric Tons/Hectares

Country Mktg Year	Area Harvested	Yield	Production	MY Imports	MY Exports	Feed and Residual	Total Consumpti	Ending Stocks
Australia								
2005/06	4.4	2.2	9.5	0.0	5.3	2.5	3.5	2.6
2006/07	4.2	1.0	4.3	0.0	1.9	2.9	4.0	1.0
2007/08	4.9	1.5	7.2	0.0	3.4	2.1	3.1	1.7
2008/09	5.0	1.6	8.0	0.0	3.2	2.9	4.0	2.4
2009/10	4.4	1.8	7.9	0.0	3.9	3.3	4.5	1.9
2010/11	3.7	2.2	8.0	0.0	4.7	3.0	4.2	1.0
2011/12	3.8	2.2	8.3	0.0	5.4	2.1	3.3	0.7
2012/13	3.7	1.8	6.8	0.0	3.8	1.9	3.1	0.5
2013/14	3.8	2.0	7.4	0.0	4.1	2.1	3.3	0.5
Canada								
2005/06	3.6	3.2	11.7	0.0	2.2	8.4	9.6	3.3
2006/07	3.2	3.0	9.6	0.0	1.2	8.8	10.2	1.5
2007/08	4.0	2.8	10.9	0.1	3.0	6.4	7.8	1.6
2008/09	3.5	3.4	11.8	0.0	1.5	7.6	8.9	3.0
2009/10	2.9	3.3	9.5	0.0	1.3	7.5	8.7	2.5
2010/11	2.4	3.2	7.6	0.0	1.2	6.3	7.5	1.5
2011/12	2.4	3.3	7.9	0.0	1.3	5.7	6.9	1.2
2012/13	2.8	2.9	8.0	0.0	1.5	5.6	6.8	0.9
2013/14	2.9	3.1	9.0	0.0	1.6	5.8	7.0	1.4
European Union								
2005/06	13.8	4.0	54.9	0.1	3.3	38.4	54.3	8.5
2006/07	13.9	4.1	56.4	0.2	3.4	38.9	55.9	5.8
2007/08	13.9	4.2	57.8	0.3	3.8	38.9	54.5	5.7
2008/09	14.6	4.5	65.8	0.3	3.6	41.7	57.3	11.0
2009/10	14.0	4.5	62.4	0.1	1.1	41.7	56.8	15.6
2010/11	12.5	4.3	53.7	0.2	4.9	41.3	56.6	7.9
2011/12	12.0	4.3	52.0	0.4	3.0	36.2	51.2	6.2
2012/13	12.5	4.4	54.6	0.1	4.7	36.7	51.8	4.4
2013/14	12.5	4.5	56.0	0.1	3.8	36.7	51.9	4.9

Sorghum Supply and Disappearance: Selected Exporters
Million Metric Tons/Hectares

Country Mktg Year	Area Harvested	Yield	Production	MY Imports	MY Exports	Feed and Residual	Total Consumpti	Ending Stocks
Argentina								
2005/06	0.5	4.7	2.3	0.0	0.2	2.1	2.3	0.2
2006/07	0.6	4.7	2.8	0.0	1.1	1.5	1.7	0.2
2007/08	0.6	4.7	2.9	0.0	1.2	1.0	1.2	0.7
2008/09	0.5	3.7	1.7	0.0	1.1	1.0	1.1	0.2
2009/10	0.8	4.8	3.6	0.0	1.8	1.7	1.9	0.2
2010/11	1.0	4.4	4.4	0.0	1.7	1.7	1.9	1.0
2011/12	1.0	4.2	4.2	0.0	3.1	1.7	1.9	0.2
2012/13	1.2	4.5	5.2	0.0	3.1	1.8	2.1	0.2
2013/14	1.2	4.5	5.4	0.0	3.0	2.0	2.3	0.3
Australia								
2005/06	0.8	2.5	1.9	0.0	0.1	1.9	1.9	0.0
2006/07	0.6	2.1	1.3	0.0	0.1	1.2	1.2	0.0
2007/08	0.9	4.0	3.8	0.0	0.8	2.2	2.2	0.8
2008/09	0.8	3.5	2.7	0.0	1.0	1.8	1.8	0.7
2009/10	0.5	3.0	1.5	0.0	0.3	1.2	1.2	0.7
2010/11	0.6	3.1	1.9	0.0	0.9	1.4	1.4	0.4
2011/12	0.7	3.4	2.2	0.0	1.3	1.1	1.1	0.2
2012/13	0.6	3.0	1.7	0.0	0.9	0.9	0.9	0.1
2013/14	0.7	3.2	2.1	0.0	1.0	1.1	1.1	0.2

U.S. Grains Supply and Distribution: Wheat, Corn, Sorghum, Barley, Oats, Rye, and Rice

Thousand Metric Tons/Hectares

	Area Harvested	Yield	Rough Production	Production	Imports	TY Imports	Exports	TY Exports	Feed Dom. Consumption	Domestic Consumption	Ending Stocks
Wheat											
2011/12	18,496	3	nr	54,413	3,050	3,000	28,516	28,071	4,507	32,202	20,211
2012/13	19,826	3	nr	61,755	3,340	3,500	27,472	27,400	10,568	38,284	19,550
2013/14	18,506	3	nr	57,524	3,538	3,500	29,257	29,500	7,620	35,679	15,676
Corn											
2011/12	33,989	9	nr	313,949	736	765	39,184	38,430	115,458	279,023	25,122
2012/13	35,360	8	nr	273,832	4,064	4,000	17,781	17,500	113,034	266,711	18,526
2013/14	36,072	10	nr	354,346	762	750	31,751	33,000	130,817	292,114	49,769
Sorghum											
2011/12	1,590	3	nr	5,447	3	3	1,610	1,548	1,795	3,954	583
2012/13	2,005	3	nr	6,272	305	300	1,905	1,900	2,337	4,877	378
2013/14	2,463	4	nr	10,033	0	0	3,810	3,800	2,794	5,842	759
Barley											
2011/12	906	4	nr	3,392	354	469	192	179	818	4,193	1,306
2012/13	1,313	4	nr	4,796	507	500	193	200	1,293	4,668	1,748
2013/14	1,244	4	nr	4,779	544	550	218	200	1,632	5,007	1,846
Oats											
2011/12	380	2	nr	779	1,621	1,729	35	27	1,445	2,549	798
2012/13	423	2	nr	929	1,600	1,500	19	25	1,678	2,781	527
2013/14	484	2	nr	1,081	1,637	1,600	44	45	1,419	2,536	665
Rye											
2011/12	98	2	nr	161	152	174	4	8	81	318	11
2012/13	100	2	nr	176	228	175	8	5	158	397	10
2013/14	130	2	nr	223	178	175	5	5	148	388	18
Rice, Milled											
2011/12	1,059	8	8,388	5,866	615	640	3,222	3,326	nr	3,470	1,303
2012/13	1,084	8	9,049	6,334	667	700	3,461	3,400	nr	3,809	1,034
2013/14	991	8	8,142	5,720	746	740	3,027	3,100	nr	3,563	910

Notes: Wheat Trade Year (TY) statistics are on July/June years. Barley, corn, sorghum, rye and oats Trade Year (TY) statistics are on Oct/Sept years. Rice Trade Year (TY) statistics are for the subsequent calendar year; 'Imports' and 'Exports' columns contain data on the local marketing year: wheat, barley, oats and rye are June/May; corn and sorghum are Sept/Aug; rice is Aug/July.

Total Wheat and Coarse Grains: Supply and Demand

Millions of Metric Tons/Hectares

	Area Harvested	Yield	Production	TY Exports	Feed Dom. Consumpti	Domestic Consumpti	Ending Stocks
Wheat and Coarse Grains							
1984/85	567.0	2.3	1,315.0	203.6	611.3	1,253.5	340.0
1985/86	570.9	2.3	1,328.5	165.2	614.5	1,247.9	420.6
1986/87	565.6	2.4	1,348.0	174.7	645.7	1,299.4	469.2
1987/88	544.8	2.4	1,285.9	202.2	656.5	1,329.8	423.1
1988/89	542.4	2.2	1,218.1	203.3	619.4	1,302.0	339.3
1989/90	548.9	2.4	1,327.4	208.9	644.4	1,346.2	320.5
1990/91	546.4	2.6	1,417.6	190.1	668.7	1,369.5	368.7
1991/92	544.1	2.5	1,355.7	207.5	651.4	1,364.9	359.5
1992/93	546.5	2.6	1,431.6	205.2	662.9	1,389.1	399.2
1993/94	536.7	2.5	1,356.1	188.2	655.7	1,389.3	366.1
1994/95	534.7	2.6	1,392.5	200.1	668.9	1,395.8	362.7
1995/96	527.7	2.5	1,338.5	187.5	640.1	1,381.8	319.4
1996/97	546.6	2.7	1,490.3	198.4	672.9	1,442.6	367.1
1997/98	535.9	2.8	1,491.6	190.3	683.3	1,444.3	414.4
1998/99	521.0	2.8	1,481.8	198.7	682.6	1,448.2	448.0
1999/00	506.9	2.9	1,465.3	214.0	688.3	1,468.2	444.5
2000/01	510.1	2.8	1,447.2	205.0	698.1	1,472.4	419.4
2001/02	513.7	2.9	1,480.5	208.4	711.2	1,496.2	403.8
2002/03	503.1	2.9	1,443.5	209.3	708.6	1,505.9	341.4
2003/04	511.6	2.9	1,471.0	205.8	714.6	1,533.9	278.5
2004/05	515.3	3.2	1,642.6	214.5	754.0	1,585.4	335.6
2005/06	517.6	3.1	1,599.9	222.5	754.2	1,615.9	319.6
2006/07	515.4	3.1	1,586.1	230.1	744.8	1,629.6	276.0
2007/08	533.0	3.2	1,693.2	245.1	759.1	1,675.9	293.4
2008/09	536.5	3.3	1,796.0	254.0	770.3	1,725.9	363.5
2009/10	532.0	3.4	1,802.3	254.2	777.9	1,766.8	399.1
2010/11	520.4	3.4	1,751.2	250.1	770.4	1,785.2	365.1
2011/12	534.2	3.5	1,851.8	287.2	802.3	1,851.7	365.3
2012/13	531.6	3.4	1,781.3	272.6	804.3	1,819.9	326.7
2013/14	541.6	3.6	1,945.3	279.9	852.1	1,917.4	354.6

Notes: Wheat and coarse grains trade data are on July/June years through 1975/76. From 1976/77 to the present, coarse grains data are on an Oct/Sept trade year.

World Wheat and Coarse Grains: Supply and Demand

Millions of Metric Tons/Hectares

	Area Harvested	Yield	Production	TY Exports	Feed Dom. Consumpti	Domestic Consumpti	Ending Stocks
Wheat							
1991/92	222.8	2.4	543.5	111.4	115.1	551.8	163.2
1992/93	222.1	2.5	562.6	113.2	111.6	547.7	177.9
1993/94	221.0	2.5	558.5	101.7	109.6	553.0	183.4
1994/95	213.3	2.5	523.0	101.5	101.4	542.1	164.2
1995/96	216.7	2.5	537.5	99.2	95.2	546.1	155.7
1996/97	227.1	2.6	581.3	104.0	99.6	573.4	163.7
1997/98	226.4	2.7	610.2	104.5	103.8	576.6	197.3
1998/99	219.2	2.7	590.4	102.0	106.8	578.2	209.5
1999/00	212.5	2.8	586.8	111.9	102.8	585.4	210.9
2000/01	215.6	2.7	583.2	102.2	109.0	586.8	207.3
2001/02	214.5	2.7	583.8	108.0	109.6	586.8	204.3
2002/03	213.5	2.7	569.6	106.6	113.7	604.4	169.6
2003/04	207.7	2.7	555.4	103.5	99.2	588.9	136.0
2004/05	215.9	2.9	626.7	113.2	108.7	606.2	156.5
2005/06	217.7	2.8	618.8	114.2	115.0	621.6	153.6
2006/07	211.6	2.8	596.3	115.6	110.2	615.6	134.3
2007/08	217.0	2.8	612.4	116.4	102.6	617.9	128.8
2008/09	224.1	3.1	683.7	143.6	121.3	643.8	168.7
2009/10	225.2	3.0	686.7	135.4	120.7	653.7	201.7
2010/11	217.1	3.0	652.3	134.0	115.8	654.8	199.2
2011/12	221.3	3.2	697.2	153.8	146.0	696.9	199.5
2012/13	215.8	3.0	655.3	146.3	137.1	680.3	174.5
2013/14	221.1	3.2	697.8	148.2	138.7	699.9	172.4
Coarse Grains							
1991/92	321.3	2.5	812.2	96.2	536.3	813.1	196.3
1992/93	324.4	2.7	868.9	91.9	551.3	841.4	221.3
1993/94	315.6	2.5	797.7	86.5	546.1	836.3	182.7
1994/95	321.3	2.7	869.5	98.6	567.6	853.7	198.5
1995/96	311.0	2.6	801.0	88.3	544.9	835.8	163.7
1996/97	319.5	2.8	908.9	94.4	573.2	869.2	203.5
1997/98	309.5	2.8	881.4	85.8	579.5	867.7	217.1
1998/99	301.8	3.0	891.4	96.7	575.8	870.0	238.5
1999/00	294.4	3.0	878.5	102.1	585.5	882.8	233.7
2000/01	294.6	2.9	864.0	102.8	589.1	885.5	212.2
2001/02	299.2	3.0	896.7	100.4	601.5	909.4	199.5
2002/03	289.7	3.0	873.9	102.7	594.9	901.5	171.9
2003/04	303.9	3.0	915.6	102.3	615.3	945.0	142.5
2004/05	299.4	3.4	1,015.9	101.2	645.3	979.2	179.2
2005/06	299.9	3.3	981.1	108.3	639.2	994.3	165.9
2006/07	303.8	3.3	989.8	114.5	634.7	1,014.0	141.8
2007/08	316.0	3.4	1,080.8	128.7	656.5	1,058.0	164.6
2008/09	312.4	3.6	1,112.4	110.4	649.0	1,082.1	194.8
2009/10	306.8	3.6	1,115.6	118.9	657.2	1,113.0	197.4
2010/11	303.3	3.6	1,099.0	116.1	654.6	1,130.4	165.9
2011/12	312.9	3.7	1,154.6	133.4	656.3	1,154.7	165.8
2012/13	315.8	3.6	1,126.0	126.3	667.2	1,139.6	152.2
2013/14	320.5	3.9	1,247.5	131.7	713.4	1,217.5	182.2

Notes: Wheat and coarse grains trade data are on July/June years through 1975/76. From 1976/77 to the present, coarse grains data are on an Oct/Sept trade year.

World Corn and Barley: Supply and Demand

Millions of Metric Tons/Hectares

	Area Harvested	Yield	Production	TY Exports	Feed Dom. Consumpti	Domestic Consumpti	Ending Stocks
Corn							
1991/92	132.5	3.7	493.0	63.0	334.4	493.3	141.0
1992/93	133.1	4.0	535.6	62.6	348.7	512.1	162.7
1993/94	130.7	3.6	475.8	57.4	342.0	509.0	129.4
1994/95	135.2	4.1	559.3	71.9	371.6	535.4	153.3
1995/96	135.0	3.8	516.4	64.8	365.3	536.4	133.3
1996/97	141.5	4.2	592.8	66.7	387.9	559.8	166.3
1997/98	136.3	4.2	574.4	63.1	400.6	573.5	167.2
1998/99	138.9	4.4	605.8	68.7	404.3	581.6	191.4
1999/00	139.0	4.4	608.4	72.1	422.5	605.4	194.4
2000/01	137.2	4.3	591.6	75.9	427.4	610.7	175.3
2001/02	137.6	4.4	601.2	72.7	436.4	625.0	151.4
2002/03	137.3	4.4	603.5	76.8	433.3	628.0	126.9
2003/04	142.0	4.4	627.1	79.0	445.9	649.5	104.5
2004/05	145.4	4.9	716.2	76.0	475.7	689.9	130.9
2005/06	145.8	4.8	700.6	82.5	478.1	707.0	124.5
2006/07	149.4	4.8	715.3	91.3	478.5	729.0	110.7
2007/08	160.6	4.9	794.6	98.2	498.3	773.5	131.8
2008/09	158.8	5.0	800.6	83.6	481.5	784.6	147.8
2009/10	158.7	5.2	824.2	92.7	490.2	825.9	146.1
2010/11	163.8	5.1	831.7	91.8	501.1	849.5	128.3
2011/12	169.6	5.2	883.3	103.8	505.4	879.1	132.4
2012/13	175.0	4.9	855.0	97.7	516.3	863.9	123.6
2013/14	176.5	5.4	959.8	102.4	557.0	932.4	151.0
Barley							
1991/92	75.9	2.2	169.9	19.4	120.3	166.5	34.9
1992/93	72.6	2.3	166.3	16.4	119.0	165.6	35.0
1993/94	73.2	2.3	169.0	18.8	123.8	169.1	34.9
1994/95	72.2	2.2	160.7	15.3	120.9	165.6	30.0
1995/96	66.4	2.1	141.2	13.4	107.8	150.7	20.5
1996/97	64.2	2.4	153.1	17.9	106.3	149.5	24.1
1997/98	63.8	2.4	153.9	12.8	104.1	145.8	32.2
1998/99	56.6	2.4	136.0	17.8	99.5	139.3	29.0
1999/00	52.1	2.4	127.4	17.8	94.0	132.5	23.9
2000/01	53.0	2.5	133.1	16.3	94.6	134.4	22.6
2001/02	55.7	2.6	143.4	17.2	95.5	136.9	29.1
2002/03	54.8	2.4	134.3	16.3	94.8	135.9	27.5
2003/04	58.3	2.4	142.1	14.8	102.6	146.3	23.4
2004/05	57.5	2.6	152.1	17.0	100.1	142.5	33.0
2005/06	55.4	2.5	136.1	17.4	97.4	141.0	28.1
2006/07	56.4	2.4	136.9	14.6	98.2	143.6	21.4
2007/08	55.9	2.4	132.9	18.5	91.0	133.8	20.5
2008/09	55.3	2.8	155.1	18.2	100.4	144.1	31.5
2009/10	54.2	2.8	150.9	17.3	101.3	145.0	37.3
2010/11	47.2	2.6	122.6	15.2	91.2	135.8	24.1
2011/12	49.7	2.7	134.4	21.4	92.4	135.7	22.8
2012/13	50.6	2.6	129.7	18.9	88.8	132.6	19.9
2013/14	51.1	2.7	139.0	18.5	91.8	137.1	21.7

Notes: Coarse grains trade data are on July/June years through 1975/76. From 1976/77 to the present, coarse grains data are on an Oct/Sept trade year.

World Rice: Supply and Demand

Millions of Metric Tons/Hectares

	Area Harvested	Yield	Rough Production	Production	TY Exports	Domestic Consumpti	Ending Stocks
Rice, Milled							
1984/85	144.1	3.2	464.9	316.8	11.0	298.4	87.7
1985/86	144.7	3.2	467.3	318.0	11.8	308.0	97.7
1986/87	144.8	3.2	464.6	316.1	12.9	310.4	103.3
1987/88	141.4	3.3	464.8	315.1	11.4	313.1	105.3
1988/89	146.6	3.3	490.8	332.1	14.0	325.7	111.7
1989/90	147.8	3.5	510.3	345.2	11.7	336.3	120.6
1990/91	147.0	3.5	519.4	351.4	12.3	345.3	126.7
1991/92	147.5	3.5	522.8	353.2	14.4	353.2	126.7
1992/93	146.5	3.6	524.2	354.0	14.9	357.5	123.2
1993/94	145.3	3.6	526.1	354.7	16.6	358.9	119.0
1994/95	147.3	3.7	539.9	364.1	20.8	365.5	117.6
1995/96	148.4	3.7	547.3	368.8	19.7	368.3	118.1
1996/97	150.1	3.8	565.3	381.4	18.9	379.2	120.3
1997/98	151.7	3.8	575.2	387.4	27.6	380.0	127.7
1998/99	153.1	3.8	587.0	394.9	24.8	388.6	134.0
1999/00	155.9	3.9	608.6	409.2	22.8	400.1	143.1
2000/01	152.4	3.9	594.1	399.3	24.4	395.6	146.7
2001/02	151.3	3.9	594.3	399.5	27.8	413.3	132.9
2002/03	146.9	3.8	563.1	378.2	27.5	408.1	103.0
2003/04	149.3	3.9	585.1	392.3	27.3	413.7	81.6
2004/05	151.8	3.9	596.6	400.9	29.0	408.5	74.0
2005/06	153.9	4.0	621.4	417.3	29.1	414.6	76.7
2006/07	154.5	4.0	624.7	419.9	31.9	421.2	75.5
2007/08	154.9	4.1	642.0	432.6	29.6	427.2	80.9
2008/09	158.2	4.2	667.7	448.7	29.4	437.2	92.4
2009/10	155.9	4.2	656.2	440.6	31.6	438.1	94.9
2010/11	157.8	4.2	670.4	449.3	36.2	445.5	98.7
2011/12	159.2	4.4	694.5	465.8	39.1	459.7	104.8
2012/13	157.8	4.4	700.5	469.8	37.6	469.3	105.4
2013/14	161.3	4.4	713.9	478.7	38.0	476.1	108.0

Notes: Stocks, exports and consumption are expressed on a milled basis in marketing years.

ENDNOTES TO GRAIN: WORLD MARKETS AND TRADE

REGIONAL TABLES

North America: Canada, Mexico, the United States.

Central America: Belize, Costa Rica, El Salvador, Guatemala, Honduras, Nicaragua, Panama.

Caribbean: Anguilla, Antigua and Barbuda, Aruba, Bahamas, Barbados, Bermuda, British Virgin Islands, Cayman Islands, Cuba, Dominica, Dominican Republic, French West Indies, Grenada, Guadeloupe, Haiti, Jamaica and Dep, Leeward-Windward Islands, Martinique, Montserrat, Netherlands Antilles, Puerto Rico, Kitts and Nevis, St. Lucia, St. Vincent and the Grenadines, Trinidad and Tobago, Turks and Caicos Islands, Virgin Islands of the U.S.

South America: Argentina, Bolivia, Brazil, Chile, Colombia, Ecuador, Falkland Islands (Islas Malvinas), French Guiana, Guyana, Paraguay, Peru, Suriname, Uruguay, Venezuela.

EU: Austria, Belgium/Luxembourg, Bulgaria, Croatia, Cyprus, Czech Republic, Denmark, Estonia, Finland, France, Germany, Greece, Hungary, Ireland, Italy, Latvia, Lithuania, Malta, Netherlands, Poland, Portugal, Romania, Slovakia, Slovenia, Spain, Sweden, United Kingdom.

Other Europe: Albania, Azores, Bosnia and Herzegovina, Former Yugoslavia, Gibraltar, Iceland, Macedonia, Montenegro, Norway, Serbia, Switzerland.

Former Soviet Union: Armenia, Azerbaijan, Belarus, Georgia, Kazakhstan, Kyrgyzstan, Moldova, Russia, Tajikistan, Turkmenistan, Ukraine, Uzbekistan.

Middle East: Bahrain, Iran, Iraq, Israel, Jordan, Kuwait, Lebanon, Oman, Qatar, Saudi Arabia, Syria, Turkey, United Arab Emirates, Yemen.

North Africa: Algeria, Egypt, Libya, Morocco, Tunisia.

Sub-Saharan Africa: all African countries except North Africa.

East Asia: China, Hong Kong, Japan, South Korea, North Korea, Macau, Mongolia, Taiwan.

South Asia: Afghanistan, Bangladesh, Bhutan, India, Nepal, Pakistan, Sri Lanka, Maldives.

Southeast Asia: Brunei, Burma, Cambodia, Indonesia, Laos, Malaysia, Philippines, Singapore, Thailand, Vietnam.

Oceania: Australia, Fiji, New Zealand, Papua New Guinea.

OTHER NOTES

Local Marketing Years (LMY): LMY refers to the 12-month period at the onset of the main harvest, when the crop is marketed (i.e., consumed, traded, or stored). The year first listed begins a country's LMY for that commodity (2011/12 starts in 2011); except for summer grains in certain Southern Hemisphere countries and for rice in selected countries, where the second year begins the LMY (2011/12 starts in 2012). Key exporter LMY's are:

Wheat	Corn	Barley	Sorghum
Argentina (Dec/Nov)	Argentina (Mar/Feb)	Australia (Nov/Oct)	Argentina (Mar/Feb)
Australia (Oct/Sep)	Brazil (Mar/Feb)	Canada (Aug/Jul)	Australia (Mar/Feb)
Canada (Aug/Jul)	China (Oct/Sep)	European Union (Jul/Jun)	United States (Sep/Aug)
China (Jul/Jun)	South Africa (May/Apr)	Russia (Jul/Jun)	
European Union (Jul/Jun)	United States (Sep/Aug)	Ukraine (Jul/Jun)	
India (Apr/Mar)		United States (Jun/May)	
Kazakhstan (Jul/Jun)			
Russia (Jul/Jun)			
Turkey (Jun/May)			
Ukraine (Jul/Jun)			
United States (Jun/May)			

For a complete list of local marketing years, please see the FAS website (<http://www.fas.usda.gov/psdonline/psdAvailability.aspx>).

Stocks: Unless otherwise stated, stock data are based on an aggregate of differing local marketing years and should not be construed as representing world stock levels at a fixed point in time.

Consumption: World totals for consumption reflect total utilization, including food, seed, industrial, feed, and waste; as well as differences in local marketing year imports and local marketing year exports. Consumption statistics for regions and individual countries, however, reflect food, seed, industrial, feed, and waste only.

Trade: All PSD tables are balanced on the different local marketing years. All trade tables contain Trade Year (TY) data which puts all countries on a uniform, 12-month period for analytical comparisons: wheat is July/June; coarse grains, corn, barley, sorghum, oats, and rye are Oct/Sept; and rice is calendar year.

EU Consolidation: The trade figures starting from 1999/00 represent the European Union (Croatia plus the former EU-27) and exclude all intra-trade. For the years 1960/61 through 1998/99, figures are the EU-15 and also exclude all intra-trade. EU-15 member states' data for grains are no longer maintained in the official USDA database. Data for the individual NMS-10, plus Bulgaria, Romania, and Croatia, exists only prior to 1999/00.

Statistics: (1) Wheat trade statistics include wheat, flour, and selected pasta products on a grain equivalent basis. (2) Rice trade statistics include rough, brown, milled, and broken on a milled equivalent basis. (3) Coarse grains statistics include corn, barley, sorghum, oats, rye, millet, and mixed grains but exclude trade in barley malt, millet, and mixed grains.

Unaccounted: This term includes grain in transit, reporting discrepancies in some countries, and trade to countries outside the USDA database.

The Field Crops and Livestock Branch, Industry and Sector Analysis Division, Foreign Agricultural Service, USDA, Washington DC 20250, prepared this circular. Information is gathered from official statistics of foreign governments and other foreign source materials, reports of U.S. agricultural attachés and Foreign Service officers, office research, and related information. Further information may be obtained by writing the Division or telephoning (202) 720-6590.

Note: The previous report in this series was the Grain: World Markets and Trade Foreign Agricultural Service Circular FG 06-13 June 2013. For further details on world grain production, please see World Agricultural Production Foreign Agricultural Service Circular WAP 07-13 July 2013.

This circular is available in its entirety on the World Wide Web via the Foreign Agricultural Service Home Page. The address is: <http://www.fas.usda.gov>